

Woody Reed, from the Kentucky Department of Transportation, discusses rules and regulations of school bus driving to 110 bus drivers from nine school systems throughout Central Kentucky. The bus driver's workshop...

## Agree or Not

by S.C. Van Curen

FRANKFORT—The allocation of \$2.4 million in surplus coal severance tax funds to the coal-producing counties last week made the county officials happy, but they are still worried about what may happen after June 30. The so-called "budget amendment" that provided for half the surplus above the budget estimate to be distributed to the counties on the basis of coal production expires next June 30. The end of the present biennial budget. It will be up to the 1976 General Assembly to pass new legislation if the coal-producing counties are to share in the severance tax. And the coal-producing county officials aren't going to be happy with the old bill of "half the surplus above the budget estimate."

The Revenue and Finance Departments, who prepare the state budget, now have an experience rating for the severance tax. The governor could put all of this in his next budget estimate, and there would be little or nothing left to distribute to the counties. Fiscal courts in several coal-producing counties have levied an occupational tax of 10 cents per ton on coal. The case is now before the Kentucky Court of Appeals to test the constitutionality of such an ordinance. Officials of these counties want the state to keep the present rate of the severance tax, but to deduct the 10 cents per ton bill from that rate supported to receive. Under this plan the tax rate would still be 20 cents per ton or four percent of the tippie price, whichever is greater.

Under this plan the tax would be equalized. If an additional 10 cents per ton is levied by the counties on top of the state tax, it might put coal producers in some counties at a disadvantage in the market place.

Coal operators for years have complained that any severance tax would put them at a disadvantage in the national market. However, the energy shortage in the last two years has almost nullified this argument. But there is a limit to taxes if the Kentucky coal industry is to remain in healthy position. The \$2.4 million allocation to the counties means that the state collected roughly \$98.8 million severance tax from coal during the past fiscal year that ended June 30. The budget estimate was \$44,000,000. You double \$2.4 million, since the state shares half the surplus with the counties, and then add the \$44 million to obtain the \$98.8 million total.

The Kentucky Chamber of Commerce Annual State Fair Luncheon will again be held in Rooms A, B, and C of the Madison Hotel at the Fair Grounds in Louisville.

Also at the luncheon the Kentucky Chamber will introduce the winner of the seventh annual STAR student program.

The mountain legislators coalition, led by Hoover Dawahare of Whitesburg and Glenn Freeman of Cumberland, led the revolt that forced Gov. Wendell Ford to share the surplus of the tax with the coal-producing counties for 1975. The original budget bill called for all of the coal tax to go into the state's general fund.

Just Ford offered the compromise that was essentially the same amendment requested by the coal county legislators to end the rebellion.

The 1975 session of the General Assembly will tell whether Dawahare and his mountain legislative group won a skirmish and not the war. Gov. Judd Carraway has not said what he will do about dividing the severance tax with the coal producing counties if he is elected to a full four-year term. The coal counties, particularly those in mountainous Eastern Kentucky, traditionally have had financial troubles since the taxable wealth is low in comparison to the rich farming areas of the state, and the industrial areas.

The surface of mountain land has small taxable value, and real property tax is the chief source of revenue for county governments.

The coal producing counties argue that the wealth, through coal production and the severance tax, is produced in their counties and that they are entitled to part of the wealth. It's a depletion industry and when the coal is gone, there will be little left to operate government.

Gov. Carroll recently permitted the counties to use their share of the severance tax money for capital improvements such as roads and bridges before he issues his executive order, tax usage was limited to industrial sites and recreation projects.

The two major candidates in the gubernatorial race have agreed to be joint speakers at the Kentucky Chamber of Commerce's 23rd Annual State Fair Luncheon Aug. 16.

Incumbent Democratic Governor Julian M. Carroll will share the speaker's podium with his Republican rival, Robert E. Gable, at the luncheon which is expected to attract a record crowd of participants from across the state.

The Kentucky Chamber of Commerce Annual State Fair Luncheon will again be held in Rooms A, B, and C of the Madison Hotel at the Fair Grounds in Louisville.

Also at the luncheon the Kentucky Chamber will introduce the winner of the seventh annual STAR student program.

The mountain legislators coalition, led by Hoover Dawahare of Whitesburg and Glenn Freeman of Cumberland, led the revolt that forced Gov. Wendell Ford to share the surplus of the tax with the coal-producing counties for 1975. The original budget bill called for all of the coal tax to go into the state's general fund.

## LOANS

...are more than money!

Federal Land Bank Loans are long-term and are available at a reasonable rate with repayment schedules tailored to your farm income flow, including prepayment privileges without penalty—all advantages to the member-borrower.

Ray Fritz, Manager  
199 W. 2nd St.  
Mayville, Ky. 41056 Phone 564-4009

## USED CAR BARGAINS

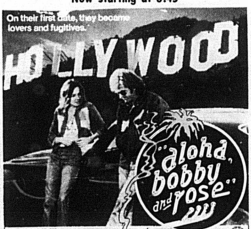
You'll Be Roofing for

- 1975 Ford LTD, 6-door, Air! Fully Equipped—Low Mileage.
- 1974 Ford LTD Squire Station Wagon, Fully Equipped, Air, Low Mileage.
- 1973 Chevrolet BelAir, 4-door, Air! Fully Equipped.
- 1972 Vega Station Wagon, 4-speed, Air!
- 1972 Mustang, Hardtop, 4-speed.
- 1970 Dodge Coronet Station Wagon, Air! Fully Equipped.
- 1969 Ford Galaxie 500, 4-door, Automatic, Air!
- 1967 American Rebel, 4-door, Air! Cheap.

**Harper's Garage**  
Phone 289-5376  
Carlisle 254 East Main St.

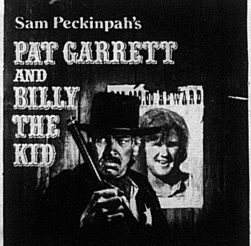
## Bourbon DRIVE-IN Theater

AUG. 14 THURS. - MON. AT 10:45



At 10:30 Peter Fonda - Dennis Hopper in "EASY RIDER"

BANKO TUES. ONE FEATURE ADM. 11<sup>00</sup>  
LAST GAME THIS SEASON AT 8:45



MGM Presents  
**PAT GARRETT AND BILLY THE KID**  
JAMES COBURN - KRIS KRISTOFFERSON - BOB DYLAN  
Also: Mike Stearns, Jason Robards, Music by Bob Dylan  
Directed by GILLOUPE WALSH. Producers: GORDON CARROLL  
Screenplay: SAM ROSEMAN. Music Score by MICHAEL CURTIZ  
R-RESTRICTED  
MGM

## Largest Nicholas group ever attends 4-H Camp last week

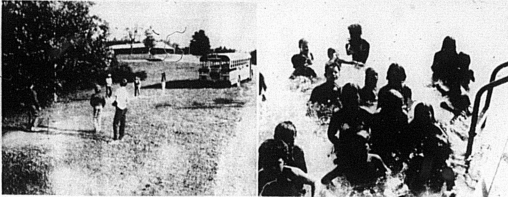


Nicholas county youngsters display soft drink tabs collected as a tribe project at camp. Mrs. Bobby Curtisinger, adult leader, and William Bean, junior counselor, display the collection with the boys.

Eighty-one 4-H'ers attended camp at North Central 4-H Camp at Lake Carmine, Aug. 4-8. Mrs. Bobby Curtisinger accompanied the group as an adult leader. Miss Sharon Alexander, Youth Agent, also attended. The youngsters participated in nature study, boating, bicycle safety, swimming, crafts, first-aid and recreation. The week was highlighted by a Bicycle Rodeo and a Talent Show.

The group as an adult leader, Miss Sharon Alexander, Youth Agent, also attended. The youngsters participated in nature study, boating, bicycle safety, swimming, crafts, first-aid and recreation. The week was highlighted by a Bicycle Rodeo and a Talent Show.

Prides were given for the neatest boy and girl cabins. Many campers received patches for achievement in various study areas. The following youngsters served as Junior Officers, to help keep the boys and girls involved in the activities at camp: William Bean, Mike Hillock, Douglas Toddler, Ray Conley, Donna Gail Hughes and Cindy Clark.



These boys are pitting themselves. The camp pavilion can be seen on the hill.

One of the favorite camp activities was swimming. These youngsters seem to enjoy this event.

**SAVE at these prices GET YOUR Regular Gas 55¢ gal. Premium Gas 58¢ gal.**

SOUTHERN STATES  
Carlisle Cooperative  
Carlisle Phone 289-7146

## Nursing home news

by Virginia Smith Donovan

They say we are now having "dog days." I've heard it said that every dog has his day, must have had mine when I was a pup.

There are two Mrs. John Caswell's here. One is Sue, the other one is Janina. Mr. Caswell had company for a little while today. His granddaughter and her two oldest children came by to say "hello" to grandpa. The two younger ones stayed home with their daddy.

Clifton Amman is a new orderly from Robertson county.

Frances Hughes is always warning about slipping from the water on the floor. All at once she fell in the floor, guess she's alright.

In hospitals and homes you hear much about the "pink ladies." We have "gray ladies," Wildman Gray and Bonnie Gray.

The folks at Mt. Zion Christian Church still come out and have services on Wednesday night. It's something to look forward to. As Mrs. Phyllis Doyle plays the piano, I often think of a little girl who wanted to school to me, came in at the last part of the year. Her name was Mary Frances Doyle. We called her "Butterfly." She was such pretty dresses. I can hear the children now saying, "Mrs. Donovan, Butterfly is out of her seat again!" That was when I taught at Gaywood.

Barbara came to see me one day. She said she had painted, painted flowers, same old Barbara. She meant much to the home, was never too busy to do us a favor.

There is a new resident here. His name is "Beet" Santos, hails from Paris, doesn't lack for help.

Russell Herrington said his niece, Shirley Hart, and her father, Ewell Hart, visited him recently. They are from Flatriver.

Miss Cordia Bell said her last letter from her niece, Marjorie Bryfield stated that she had now moved to her home down on Herrington Lake. Mrs. Sparks Wilson also visited Miss Cordia.

## When you think of pests,

think of me.

I can get the termites out of your house. And the ants, cockroaches, spiders or mice. And keep them out. I can get any pest out of your house. (Except maybe your in-laws.)

Call me Bob Davis, the Carlisle Termite man. Call me collect Lexington 252-8484.

**TERMINIX**  
All work done by  
Terminals of Lexington

**Check-out our COOKOUT at IGA Specials**

- Nescafe Instant Coffee 10-oz. jar **1.69** with coupon
- Clorox gallon jug **59¢**
- Wilson Canned Milk 13-oz. can **4 for 1**
- Chuck Roast 1 lb. **79¢**
- Tablet Fresh Early Breeze Red Apples 3-lb. bag **89¢**
- Kraft Singles 6-oz. pkg **47¢**
- Saltines 16-oz. box **49¢**
- Potted Meat 6 for **1**
- Vienna Sausage 5-oz. cans **4 for 1**
- Hot Dog Buns 8 pack **39¢**
- Grill Dogs 1-lb. pkg **99¢**
- Pork & Beans 16-oz. can **4 for 1**
- Ice Cream 1/2 gallon **89¢**
- Banquet Frozen Fried Chicken 32-oz. box **1.99**
- Dial Gold Soap 7-oz. bar **41¢**
- Baby Shampoo 12-oz. bottle **1.39**
- Plastic Strips 20 ct. **59¢**
- Conditioner 8-oz. bottle **99¢**
- Super II Blades 5 **89¢**
- First Aid Spray 3-oz. can **99¢**
- Cooking Oil 5-lb. can **3.99**
- Corn Meal 5-lb. bag **89¢**
- Ground Beef 3-lb. can **89¢**
- Pot Roast 1 1/2-lb. can **89¢**
- Chuck Steak 1 1/2-lb. can **99¢**
- Stew Beef 1 1/2-lb. can **1.29**
- Ground Chuck 1 1/2-lb. can **99¢**
- Sausage 1-lb. pkg **1.49**
- Pork Chops 1 1/2-lb. can **1.69**
- Sliced Beef Liver 1 1/2-lb. can **69¢**
- Canned Ham 5-lb. can **7.49**
- Variety Breads 16-oz. pkg **43¢**
- Maple Nut Rolls 16-oz. pkg **69¢**
- Banquet Dinners 12-oz. can **2.89**
- Orange Awake 12-oz. can **39¢**
- Thin Spaghetti 5-oz. pkg **5.31**
- Macaroni 5-oz. pkg **5.31**
- Frisies Cat Food 5-oz. can **5.31**
- BesPak Trash Bags 17<sup>00</sup>
- Ritz Crackers 12-oz. can **69¢**
- Large Cantaloupe **59¢**
- All Green Celery **25¢**
- Mushrooms **89¢**
- Seedless Grapes **59¢**
- Large Eggs **65¢**
- Old Style Biscuits **75¢**
- Corn Oil Quarters **65¢**
- Van Camp Potted Meat **49¢**
- Van Camp Vienna Sausage **4 for 1**
- Easy On Spray Starch **45¢**
- Nescafe Instant Coffee 10-oz. jar **1.69**

**For Your Roofing Needs**

- 5-V galvanized \$23.60 per square
- Temper-Rib Aluminum \$20.50 per square
- Self-Sealing Asphalt Shingles \$17.95 per square

Mr. Farmer Want to Save Money on Hail Insurance in Nicholas County my rate are \$500 for Hail & Wind \$570 for Hail & Fire pay when you sell your tobacco

**Joe Crouch**  
Nights 289-2567  
day 289-5908

SOUTHERN STATES  
Carlisle Cooperative  
Carlisle Phone 289-7146

**PAINT SALE!**

Dupont "as easy as 1-2-3"

**Latex House Paint \$6.49 Gal.**

**Alkyd Gloss Floor Enamel \$6.45 Gal.**

**Latex Floor Enamel Gal. \$6.79**  
Regular Price \$9.49 - Save \$2.70 per gal.

Buy Now, Paint later... and Save "Easy as 1-2-3"

**Ratliff Bros.**

With Top Value Stamps you can get more for your prescription dollar

at "The Drug Store" that gives Top Value Stamps

your BANYKAMERCA welcome

**Carlisle Drug Co.**  
THE PRESCRIPTION STORE  
CARLISLE, KY.

Gala Towels 49¢  
Grape Jelly 99¢  
Fruit Cocktail 39¢  
Macaroni Dinner 89¢  
Noodles Dinner 89¢