

U.S. Gov't Inspected Tender, Lean



Copyright 1974—The Kroger Co. Quantity rights reserved. Items & prices good in Paris Kroger store thru Nov. 18, 1974.

# Thrifty Beef Sale



U.S. Gov't Inspected Tender, Lean Thrifty  
**Semi-Boneless Chuck Roast**  
**89¢**

U.S. Gov't Inspected Tender, Lean Thrifty  
**Sirloin Steak** **1<sup>38</sup>**

U.S. Gov't Inspected Tender, Lean Thrifty  
**Porterhouse Steak** **\$1.58**  
U.S. Gov't Inspected Tender, Lean Thrifty  
**Shoulder Roast** **\$1.19**  
U.S. Gov't Inspected Tender, Lean Thrifty  
**Flat Brisket** **\$1.29**  
U.S. Gov't Inspected Tender, Lean Thrifty  
**Sirloin Tip Roast** **\$1.49**

U.S. Gov't Inspected Tender, Lean Thrifty  
**Boneless Beef Roast** **\$1.49**  
U.S. Gov't Inspected Tender, Lean Thrifty  
**E-Z Slice Pot Roast** **\$1.49**  
U.S. Gov't Inspected Tender, Lean Thrifty  
**Whole Rib Eye** **2<sup>29</sup>**

**Kroger**  
**Return Check Policy**  
We will refund the amount of any check returned to us for any reason. Some items may be subject to change without notice. Some items may be subject to change without notice. Some items may be subject to change without notice.

**BURGER-PRO**  
**69¢**

**Boneless Beef Cube Steaks**  
**1<sup>39</sup>**

**Boneless White Fish Turbot Fillets**  
**69¢**

**DISCOUNT FOOD STORES**

Whole Smoked Semi-Boneless Ham **99¢**  
Country Style Sliced Bacon **1<sup>09</sup>**  
Kroger Skinless Beef Wieners **69¢**  
one 12-oz. pkg. Deli Chef Potato Salad with the purchase of 1 5-oz. pkg. Deli Chef Pimento Cheese **FREE**

3-lb. or more Family Pak U.S. Inspected Fresh Fryer Thighs **59¢**  
Tennessee Pride Whole Hog Sausage **\$2.37**  
Sliced Bacon **\$1.29**  
Braunschweiger **59¢**  
Lunch Meat **89¢**  
Boneless Hams **\$1.49**  
Meat Entrees **\$1.29**  
Beef Patties **89¢**  
Whiting Fish **39¢**

2% Lowfat Milk **1<sup>39</sup>**  
Robin Hood Flour **568**  
White Bread **3<sup>1</sup>**

Ajax Laundry Detergent **88¢**  
Coca Cola **79¢**  
Wiener Buns **99¢**  
Cookies **79¢**  
Sauer Kraut **\$1**

Bean Coffee **2<sup>89</sup>**  
Applesauce **3<sup>1</sup>**  
Cottage Cheese **85¢**  
Green Beans **3<sup>88</sup>**  
Coffee Rich **27¢**  
Breakfast **2<sup>07</sup>**  
Kroger Saltnes **\$1**

Ice Cream **89¢**  
Cherries **2<sup>1</sup>**  
4 Little Pizza **59¢**  
Flaky Biscuits **4<sup>00</sup>**  
Fabric Softener **79¢**

Bananas **14¢**  
Cranberries **39¢**  
Oranges **579**  
Fruit Cake Mix **99¢**  
Pecan Halves **\$1.39**  
Walnut Meats **\$1.19**

Twin Rolls **2<sup>89</sup>**  
Farmstyle Bread **89¢**  
Peanut Butter **\$1.09**  
Cinnamon Rolls **\$1**  
Liquid Dressings **39¢**

Pot Pies **4<sup>1</sup>**  
Biscuits **6<sup>69</sup>**  
Toothpaste **59**

Mild Cheese **99¢**  
Hash Browns **59¢**  
Orange Juice **2<sup>29</sup>**  
Jango Pizza **79¢**  
French Fries **\$1.39**

Young Students Encyclopedia **29**  
Soy Sauce **6<sup>99</sup>**  
This Week's Feature! Bread & Butter **59**

Popsodent **59**  
Baby Food **6<sup>105</sup>**  
Lux Liquid **88**  
Woolite **1<sup>09</sup>**  
Biggs Cookies **77**  
Dove Soap **3<sup>1</sup>**  
Protein 21 **1<sup>00</sup>**

Wash \$1.00 **3<sup>49</sup>**  
Wash \$1.00 **2<sup>49</sup>**  
Wash \$1.00 **6<sup>99</sup>**

Wash \$1.00 **3<sup>49</sup>**  
Wash \$1.00 **2<sup>49</sup>**  
Wash \$1.00 **6<sup>99</sup>**

Wash \$1.00 **3<sup>49</sup>**  
Wash \$1.00 **2<sup>49</sup>**  
Wash \$1.00 **6<sup>99</sup>**

Wash \$1.00 **3<sup>49</sup>**  
Wash \$1.00 **2<sup>49</sup>**  
Wash \$1.00 **6<sup>99</sup>**

Wash \$1.00 **3<sup>49</sup>**  
Wash \$1.00 **2<sup>49</sup>**  
Wash \$1.00 **6<sup>99</sup>**

Wash \$1.00 **3<sup>49</sup>**  
Wash \$1.00 **2<sup>49</sup>**  
Wash \$1.00 **6<sup>99</sup>**

Wash \$1.00 **3<sup>49</sup>**  
Wash \$1.00 **2<sup>49</sup>**  
Wash \$1.00 **6<sup>99</sup>**

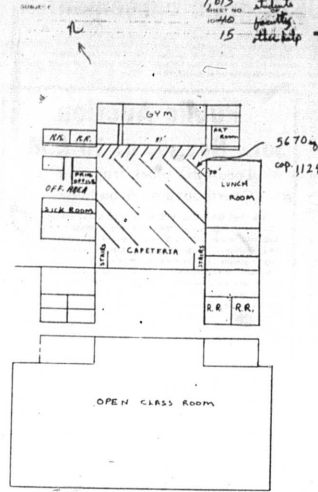
Wash \$1.00 **3<sup>49</sup>**  
Wash \$1.00 **2<sup>49</sup>**  
Wash \$1.00 **6<sup>99</sup>**

Wash \$1.00 **3<sup>49</sup>**  
Wash \$1.00 **2<sup>49</sup>**  
Wash \$1.00 **6<sup>99</sup>**

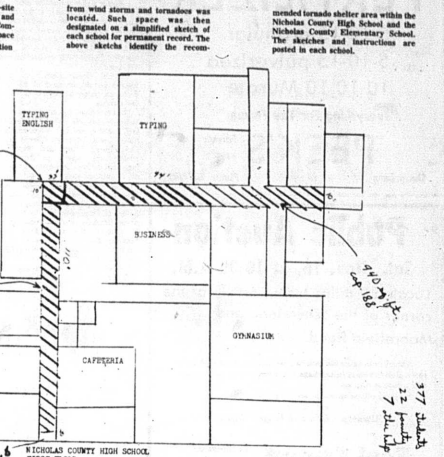
Wash \$1.00 **3<sup>49</sup>**  
Wash \$1.00 **2<sup>49</sup>**  
Wash \$1.00 **6<sup>99</sup>**

Wash \$1.00 **3<sup>49</sup>**  
Wash \$1.00 **2<sup>49</sup>**  
Wash \$1.00 **6<sup>99</sup>**

## At local schools Tornado shelter areas defined



During the summer of 1974 an on-site inspection was made of primary and secondary schools within the Commonwealth of Kentucky and space offering the best available protection



FOR TORNADO SHELTER, USE AS MUCH AREA IN THE BASEMENT AS POSSIBLE: HALLWAYS, AND ANY EXTERIOR ROOMS (ELECTRICAL LOCKER ROOMS), NOT INCLUDING THE LIBRARY. FOR ADDITIONAL SPACE, USE THE PAINT HALLWAYS ON THE FIRST FLOOR (PARKED AREA).

## FHA has big start

By Carla Hunt  
The Nicholas County FHA Chapter has gotten off to a big start. To get the year going, they held a project day to encourage new members to join FHA. Approximately 25 girls attended this activity which was held in the Home Economics department.

During the month of September the Chapter sponsored the Artistic Drive. We held a roadblock one Saturday, then one night members worked on the house-to-house drive. Several members volunteered to go to the businesses in the community. We collected a total of \$462.70.

## Kentucky Baptist Convention to be held

The 177th annual meeting of the Kentucky Baptist Convention will be held at the First Baptist Church, Paducah, Nov. 12, 13, 14. The convention convenes Tuesday, Nov. 12 at 10:30 a.m. with President Henry W. Schaefer presiding. Messengers will be attending from over 200 cooperating Baptist churches representing over two-thirds of a million Kentucky Baptists.

## Look what you can win in PENNY-PINCHER'S SWAP SHOP



Got a surplus of pennies you've accumulated? We need them today and you may win a valuable prize if you cash them in at your Kentucky Group Bank!

Here's how the Penny-Pincher's Swap Shop works:

Bring in your pennies, and exchange them for other coins or bills of equal value.

For every dollar's worth of pennies you cash in we give you a Penny-Pincher's Swap Card. You keep one half and bring the other half again to the Swap Shop Prize Booth.

On Monday, December 16th, we'll hold a drawing to see who wins the bike, the AM radio, the tape recorder and the \$25 savings account. We'll tell you how to get the prize to you.

**BE PENNY WISE - BRING IN THOSE PENNIES NOW!**

**First National Bank** FDIC  
KENTUCKY GROUP BANKS

**1972 UTILITY POLES \$47 each**

**1974 UTILITY POLES \$94 each**

**WHY WE CAN'T SAY "PRICES ARE TOO HIGH: WE WON'T BUY."**

When poles are installed and replaced by the thousands, the impact of a 100% price increase is almost unbelievable. So the increase in the cost of last year's \$500,000 substitution. It now costs \$1 million.

It takes a lot of poles and wire and substations to assure you the kind of electric service you expect from us.

We can't simply say, "Prices are too high; we won't build!" We must buy and we must build to meet your increasing electrical needs.

In the next few years, 1974-1978, we must spend more than \$500 million to build new facilities at today's and tomorrow's costs. In the past when we built new facilities their greater efficiency held down the cost of service. In the face of today's awesome price increases that is no longer true. Consequently, as we build and grow for tomorrow the cost of electricity must grow with us.

Electricity... use it wisely **KENTUCKY UTILITIES COMPANY**