

COME in and REGISTER FOR Valuable Prizes to be given away May 31st.

From now until May 31, 1974, General Electric is offering the appliances and televisions shown, plus some others, to its dealers at prices reduced from previous levels, and has also lowered its suggested retail prices.



General Electric's NATIONAL SALE DAYS!



GE 15.6 cu. ft. NO-FROST REFRIGERATOR-FREEZER with 4.30 cu. ft. FREEZER

- Larger freezer can mean fewer trips to the market.
- POWER SAVER SWITCH can help reduce power consumption and operating cost.
- 4 shelves.
- Storage in both doors.

\$319⁹⁵
Model T8F 165R

GE 18-lb. CAPACITY 2-SPEED FILTER-FLO^W WASHER with MINI-BASKET™

- Big capacity helps save energy—wash one large load instead of several smaller loads.
- 5 wash-rinse combinations (including cold) let you save hot water.
- Variable water level and Mini-Basket features let you save hot water.

\$239⁹⁵
Model W830P

GE CONVERTIBLE POTSDUMBER™ DISHWASHER

Built-in later

- No pre-rinsing needed, thus saving hot water, energy (just tip off large or hard scraps).
- 2 Cycles including Power Scoop™ cycle for pots, pans.
- 3 Level wash action.
- Wood worktop.

\$219⁹⁵
Model G5C 445

GE DRYER with AUTOMATIC SENSOR CONTROL

- Stops automatically when clothes are dry.
- Helps save energy by not running on needlessly.
- 3 Cycles.
- 3 Temperature selections including Permanent Press/Poly-Knit Extra Care.

\$169⁹⁵
Model DDE 7200P

GE RANGE with P-7™ SELF-CLEANING OVEN SYSTEM

- Oven cleans itself electrically, including interior oven door, racks, surface and reflector pans.
- Automatic oven timer, clock, & signal buzzer.
- Extra insulation in P-7 oven—uses less energy during baking than a conventional oven.

\$319⁹⁵
Model J 361R

GE HI-EFFICIENCY 5500 BTU-H ROOM AIR CONDITIONER

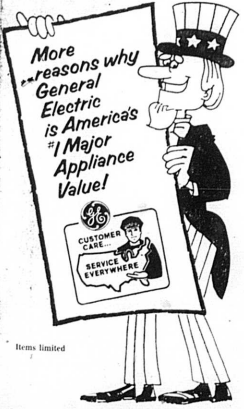
- 115 V., 5.5 Amp, 625 Watts.
- 88% Energy Efficiency—90%—saves cooling per watt than many models of comparable capacity.
- 3 Speed cooling or ventilation.
- Easy Mount Insulation.
- 10 Position thermostat—let you save energy.

\$189⁹⁵
Model AGAE 505LA

GE 25" Diagonal 100% SOLID STATE MODULAR COLOR TV

- Color up to 4.5 times power than 25" Tube type.
- One Touch Color™ System.
- Black Mirror Spectra-Brite™ 16" Picture Tube.
- 20 Position "Click In" UHF Tuning.
- GT Cable Ready™ antenna connector.

\$569⁹⁵
Model MB 9162PN

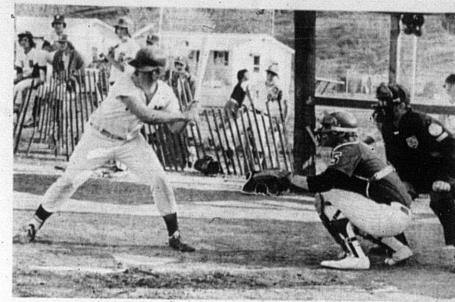


Garrett's Furniture Company

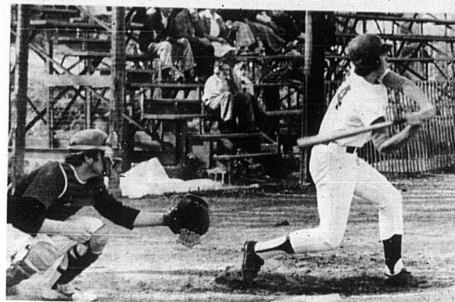
Phone 289-2308

"We Deliver"

Carlisle, Ky.



Waiting Mike Mattox stands waiting for a pitch in a game with St. Patrick last Thursday.



Sailing Doug Fryman sends one sailing over the fence for a three run homer in the first inning of last Thursday's game with St. Patrick.

WANTED: All persons named Harrod -- in Harrodsburg

A search is underway in Kentucky and throughout the country—a search being conducted by members of the Harrodsburg Historical Society for descendants of and persons named after the town's founder, Col. James Harrod.

On June 16, the people of Harrodsburg will be celebrating the 200th anniversary of the founding of the town by Harrod and his band of 22 adventurers. Harrod's exploits led to the establishment of Fort Harrod, the first permanent settlement west of the Alleghenies.

For this anniversary, Harrodsburg citizens have planned an activity-packed ten-day Bicentennial celebration, June 8-16, and two successive celebration weekends, June 22-23 and 28-30.

One of the unique events included in the celebration plans is the reunion of Harrod descendants and persons bearing the Harrod name from across the country, June 13-15, in Harrodsburg. The reunion, sponsored by the local historical society, is producing Harrods and letters from interested persons throughout the United States.

Kentucky Group Banks make

- Kitchen LOANS
- Family Room LOANS
- Patio LOANS
- Paneling LOANS
- Carpeting LOANS
- Air Conditioning LOANS
- Bathroom LOANS
- Swimming Pool LOANS
- Garage LOANS
- Siding LOANS
- Linoleum LOANS

The First National Bank of Carlisle and Moorefield Branch



Chapter attends meet

The Nicholas County Chapter of the Future Homemakers of America attended the 15th Region's spring meeting, Saturday, April 27, at Eastell county.

The theme of the meeting was "FHA's Do More in '74" and Nicholas County Chapter was in charge of interviewing officer candidates for 1974 and presented a melodrama skit. Judy Hunter was elected second vice-president and Susan Custer was elected treasurer of Region 15 for 1974.

Those who attended were Mrs. Martha Taylor and Mrs. Bonnie Metcalf, advisers; Mae Rita Thomas and Miss Peggy Lemon, student teachers; Lisa Reynolds, Diana Allison, Carol Hunt, Judy Hunter, Cora Hunt, Jane Hobbs, Susan Vandenberg, Susan Custer, Cheryl Lowe, Beverly Kimes, Peggy Taylor, Mona Garrett, Ramona Tisack, Tammy Hunter, and Paula Soaps.

Nursing Home news by Virginia Smith Donovan

Mrs. Ruby Lutzinger and children have been visiting her father, Russell Harrington. They are from Bracken county.

Janice Conley comes around every few nights, she and her big smile are always welcome.

Mrs. Iva Payne has a pot of beautiful white mums in her room. Said her daughter-in-law, Anna Marie McCord of Indiana sent them to her.

Mrs. Ed Weathers' brother, Bruce Campbell and wife of Palmouth came to visit her one day. Lucille said they were not getting about a dozen eggs a day. They have 12 but her chickens they get a double egg.

Rev. Melvin Sapp of Illinois visited his sister, Mrs. Thelma Morris. He's a lot of fun to have around. He's a good amount of prevented planting payment or low yield payment.

—Other crops going to the extent they cannot be harvested.

Non-conserving crops listed as important

Annual non-conserving crops are particularly important for 1974 since they may protect feed-grain and wheat allotments and are a consideration in determining eligibility for feed grain and wheat prevented planting payments.

Non-conserving crops are any annual crop intended for harvest and produced for market or feed except for the following:

- Annual grasses regardless of use are not classified as a non-conserving crop.
- Legumes are not, but peas or beans produced for seed, grain, or processing are a non-conserving crop.
- Feed grain and small grain destroyed by any means or used for other than grain by the date of certification are not a non-conserving crop.
- Corn or grain sorghum is a non-conserving crop when used for silage; harvested for any purpose after the date of certification.
- Barley or wheat is a non-conserving crop when harvested for any purpose after the date of certification. When pastured or harvested for other than grain by the date of certification it is considered to be a non-conserving crop for allotment protection when the operator requests credit for a non-conserving crop and excluded in determining eligibility for and

The right vitamin at the right price? Naturally, it's **Recall**.

It's time now to use the complete line of guaranteed Recall vitamins at your local Drug Store... vitamins, capsules and chewable tablets are not completely satisfied, return them promptly for a refund.

SPECIAL ATTENTION
Be sure and stop by to see our new selection and large display of
Amendador Cards

REMEMBER MOTHER'S DAY! Sunday, May 12

Complete Selection of Mother's Day Cards and Gifts.

Carlisle Drug Co.
THE DRUG STORE

NOW OPEN

Carlisle Automotive, Inc.

Your NAPA Jobber

Featuring Automotive parts for tractors and other farm equipment

Home owned and operated by James Howard

Elm and Market St. Carlisle, Ky. Phone 289-5182