



Fast ball

Joe Raddell delivers a pitch in the Babe Ruth All-Star Tournament Friday at Morehead—Smith photo



Steve Day scoops up a ground ball in Morehead—Smith photo Friday's Babe Ruth All-Star game at Morehead—Smith photo

### Nicholas falls to Russell Co.

By Jimmy Smith  
The Nicholas County Babe Ruth All-Stars lost to Russell Friday in the Flatwood District Tournament at Morehead, 11-9. The Nicholas county team was plagued with errors, and managed to produce only five hits throughout the entire game.

The second inning was the first scoring threat that Nicholas County imposed, but a Damon Booth single and a Steve Day walk availed nothing as the All-Stars couldn't convert these to scores.

Nicholas failed to score until the sixth inning of play when they were down, 9-0. Greg Letcher began the action with a double and then he stole third. Damon Booth's base hit advanced Letcher for the score. Steve Day smacked a double and moved Booth across to score.

The only other score came in the last inning when Tony Rutter's five base running positioned him on third base and then Greg Letcher brought him home with a base hit.

### Accepts assistant managers position

Betty Helphandine, formerly of Carlisle, now residing at 1734 Augusta Court, Lexington, has accepted the position as Assistant Manager at Globe Carpet, Inc., Lexington. She was formerly employed at Peter Brothers-Aluminum Center as secretary. She is the daughter of Ruby E. Smart of Carlisle.

### Attending library course at MSU

Morehead State University, in cooperation with the Kentucky Department of Library and Archives, is conducting a three-week course for public and bookmobile librarians.

Among the participants is Freda S. Sparks, bookmobile librarian from Nicholas County Public Library. Fifteen librarians are attending the third annual session conducted by MSU's Department of Library Science and Instructional Media. Classes meet from 9 a.m. to noon, Monday through Friday. The course ends July 26. Dr. Jack Ellis, MSU director of libraries, and Faye Belcher, associate director, are coordinators.

**TOBACCO HAIL INSURANCE**  
M.C. Blair Insurance Agency

Phone 289-2492

### Evergreen Hill Farm site of field day

The Evergreen Hill Farms, Madisonville, is the site of the upcoming Kentucky Junior Herford Association Field Day Saturday, July 27. The four-day program will consist of the agricultural judging contest for 441 and FFA women, individuals, juniors and adults with a nice array of trophies and awards for those who excel. Nationally known beef cattle specialists will highlight the afternoon program in addition to the selection of a Kentucky Herford Queen and the election of new KJHA officers.

### Carlisle Automotive Inc.

N. A. P. A.

Complete line of Automotive—Farm & Truck Parts

289-5182

If no answer Dial 289-5800

Owner James G. Howard

Open: Mon.-Sat. 7:00 a.m.-5:00 p.m.

Carlisle, Ky.

**6 BIG DAYS... in TOWN**

# TRUCKLOAD COAT SALE

Starts July 23  
Ends July 31st

Don't Wait! is absolutely the last day this unusually large collection of pre-season style COATS and PANT COATS will be shown

SHOP NOW WHILE THIS SELECTION OFFERS SIZES, FABRICS, STYLES TO PLEASE EVERYONE. FAVORITES FOR WINTER 1974-75.

**34.99 39.99 49.99**

OTHERS, INCLUDING MINK TRIMMED COATS, PRICES TO '89.99

We offer PANT COATS, and REGULAR LENGTH COATS. All come in a host of fabrics including HARRIS TWEEDS, FUNFURS, Polyesters, Meltons, Bronco Suedes, Seal, Pike, Shettlands, and others.

• Petite • Junior • Missy • Half Sizes

SELECT EARLY! a small deposit will hold on Convenient Lay-A-Way

**LERMANS**  
SATISFACTION GUARANTEED

### First of two-part dove season to open

The first of a two-part "split" dove hunting season in Kentucky will open Sept. 1 and continue through Oct. 31, Fish and Wildlife Commissioner Arnold Mitchell said Monday.

### HAIL Insurance on Tobacco

Harold Letton 289-5346

### Insulation: the key to the economy of Electric Heat

Let the facts speak for themselves:

- Home built: 1968
- Living area: 1460 square feet
- Heat: electric ceiling cable
- Computed heating cost: \$183 annual
- Maintenance cost: 5 years, \$15

Homes with cost figures like these are normal examples of electric heating costs. We have thousands more. The key to that economy is proper insulation. This home had ceiling, R-32; walls, R-16; floor, R-13. That's where we come in. If you or your contractor gets us we can help you plan the most economical installation.

**KENTUCKY UTILITIES COMPANY**

**Watterson College first school notified of accreditation**

Watterson College was notified recently by the American Medical Association that their educational program for Medical Assistants has been accredited by the Council on Medical Education of the American Medical Association in collaboration with the American Association of Medical Assistants.

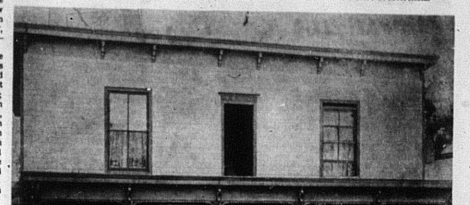
Denmark forms stepping-stones between mainland Europe and the rest of Scandinavia. When Ice Age glaciers receded, plants, animals, and man populated north along its islands, National Geographic says.

It's wise to use electricity...use it wisely!

GENERAL REVENUE SHARING		ACTUAL USE REPORT	
CATEGORIES	ACTUAL EXPENDITURES	OPERATING MAINTENANCE	THE GOVERNMENT OF
1 PUBLIC SAFETY	\$ 1,640	\$ 9,875	THE GOVERNMENT OF <b>CARLISLE CITY</b> Has received General Revenue Sharing payments totaling \$22,159 during the period from July 1, 1973, through June 30, 1974. Account No. 10 2 091 001 <b>CARLISLE CITY</b> MAYOR CARLISLE KENTUCKY 40311
2 ENVIRONMENTAL PROTECTION	\$	\$ 500	
3 PUBLIC UTILITIES	\$	\$	
4 HEALTH	\$	\$ 415	
5 RECREATION	\$	\$	
6 LIBRARIES	\$ 1,500	\$	
7 SOCIAL SERVICES	\$	\$	
8 TRANSPORTATION	\$	\$	
9 MULTIFAMILY HOUSING AND COMMUNITY DEVELOPMENT	\$	\$	
10 EDUCATION	\$	\$	
11 HOUSING DEVELOPMENT	\$	\$	
12 COMMUNITY DEVELOPMENT	\$	\$	
13 DEVELOPMENT	\$	\$	
14 TOTAL	\$ 4,637	\$	
15 TOTALS	\$ 13,667	\$ 10,810	VOUCHER FUNDED REPORT (1) Balance as of June 30, 1973 ..... \$ 13,259 (2) General Revenue Sharing Funds Received from July 1, 1973 through June 30, 1974 ..... \$ 22,159 (3) Balance Forward ..... \$ 3,314 (4) Total Funds Available ..... \$ 36,314 (5) Total Amount Expended ..... \$ 24,477 (6) Balance as of June 30, 1974 ..... \$ 11,837

### Ches Cole's drygoods store in Moorefield 1898

Ches Cole Craycraft Cole was a native of Shannon in Mason County, Ky. He was born there in 1881. He became owner of this store in 1897. This building stood between where the First National Bank Branch and the Moorefield Christian Church now stands. This old building was erected in 1884 and was destroyed by fire in 1937, shortly to meet prevailing time.



along with the Post Office building which joined it. In 1900 Mr. Cole moved to Carlisle. He erected a four-story brick building on the old S. C. Cloud Hotel site at the corner of East Main and Maple Streets (now Broadway) at a cost of \$15,000. He operated C. C. Cole and Company Men's Clothing Store until he died in 1928. His record is retained at Frank Weaver's Store at Moorefield.

### Hospital notes

July 3, 1974 to July 9, 1974. Visiting hours are 2 to 4 p.m. and 7 to 9:30 p.m. ADMITTED: Harry Johnson, Jake Earlywine Sr., Herman Conyers, Martha Ray Laville, Vernon Willoughby, Doris Lee Curtis, Clay Dayton, Billie Ockerman, Elsie Earlywine, Velma Harney, Emma Sloan, Danny Dixon, Ira D. Mitchell, Carlisle, Charles Foor, Lexington; Clifton Luman Jr., Cora Crump, Mayfield; Mildred Chandler, Lena Dixon, Kate Shepherd, Florida Moore, Mc. Olivet, Linda Judge, Sharpsburg; Mary Lige Egan, Evelyn Diana Barrett, Elizaville; Peggy White, M. Stierling; William Lee Earlywine, Paris; Jesse Smith, Morefield; Cecil Laville Jr., Germantown.

DISMISSED—Paul Sapp, Walter Soaps, Mahal Morris, Nancy Willoughby, Carolyn Tischer, Elizabeth Toddler, Mary Hamilton, Ewell Wilson, Alma Goff, Becky Hollar, Herbert Booth, Danny Dixon, Jake Earlywine Sr., Herman Conyers, Robert Wilson, Elsie Earlywine, Carlisle; Cheslie Vice, Clifton Luman Jr., Mayfield; Paul Jolly, Paris; Raymond Wright, Mt. Olivet; Wanda Shaggs, Linda Judge, Sharpsburg; Cecil Laville Jr., Germantown; George Curtis, Mary Riggs, Bowling; Diana Barrett, Elizaville; Jesse Smith, Morefield; Charles Foor, Lexington; Peggy White and baby boy, M. Stierling.

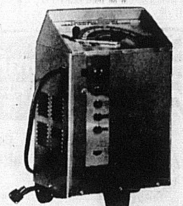
Days gone by! L. to R. "Cap" Stone the barber, Ches Cole's partner in the store, Photo and text Roy L. Shannon Collection

sitting on the stiles and Robbie Kirkland, Cole's partner in the store, Photo and text Roy L. Shannon Collection

## You're invited to a FREE WELDING CLINIC!

Here's a rare opportunity... a chance for farmers and others to learn how to save valuable time and money by doing their own welding.

With improved new Twentieth Century equipment, it's easy. We'll demonstrate it. Then we'll let you try your hand. You'll see how easily you can do a multitude of repair jobs with a versatile new Twentieth Century heavy-duty welder. Remember, it's the handy, low-cost welder with these 8 exclusive features...



- Three welders in one.
- A new 400 AMP cutting ground for faster and cleaner cutting, piercing and gouging.
- Overhead and vertical welding easy as flat welding. Saves time.
- Spot welding without attachments, with settings built in, for faster, stronger welds.
- Spot welding without attachments, with settings built in, for faster, stronger welds.
- Soldering, also without attachments, with settings built in, for faster soldering without surface preparation.
- Heavier construction — more copper and sturdier electrical steel protect against voltage loss, let you weld better, strike and hold an arc easier.
- You get a "continuous welding" service guarantee — five years on parts, labor and repairs; twenty years on labor and repairs.
- Battery charging with an inexpensive attachment for fast and slow charging of 6, 8, 12 and 24 volt batteries.

WE'LL TAKE YOUR PRESENT WELDER IN TRADE!

## Friday, July 19th

Refreshments will be served 8 a.m. to 10 p.m. Southern States

**Carlisle Cooperative**  
Phone 289-7166 Carlisle, Ky.

Your Southern States Cooperative Agency