

Town & Country Review

READER SERVICE SECTION COMPILATED BY COMMUNITY NEWSPAPER ASSOCIATES

Keller's Farm Store

Bob Keller - Owner Bobby Keller - Manager

This progressive firm is located at the new location at Legion Road in Paris, phone 987-4064.

citizens in the community that the management of this firm and in making this Business Review of the area it is natural to complement them and to direct your attention to them as the most reliable establishments which added to the development and progress of this part of the area.

Pepsi Cola Distributor

Roger Keller - Distributor

Pepsi Cola is bottled and distributed in this area by a distributor at 147 Woodmont Drive in Paris, phone 987-4312.

community minded bottlers throughout America such as this well-known bottler are well represented in this area by Roger Keller and Nicholas Fletcher.

Bussell's TV and Appliances, Inc.

Charles Bussell - President

This firm offers the greatest value in television and stereo sales and service and is located at 1360 South Main Street in Paris, phone 987-4076.

may need replacement or adjustment. They are familiar with almost every type and brand of television set in the home.

Paul Miller Ford

"New and Used Cars and Trucks"

In this day and age when every car maker has such a wide selection of models to choose from, it is really difficult for you to decide where to go for new cars.

the quality service he can offer you after the sale. In this Ford dealer you will find a car that is really a car to be proud of.

FARM AND HOME CLOTHING

TOBACCO MARKET OPENING

anxiously awaiting the opening of the market this week. The weather has not been too favorable and much of the crop has been damaged.

has been stripped. The support price for four cents per pound higher than last year. Most growers expect the average price to be more than this amount.

CATTLE NEED VITAMIN A

All cattle need to receive Vitamin A during the winter feeding period, from Thanksgiving until the first day of pasture in the Spring.

It cattle are receiving additional feed, a vitamin premix can be mixed with the feed and added to daily rations.

REMOVE FALLEN LEAVES

Homeowners are advised to remove fallen leaves from their lawns.

LIBERTY LOAN CORPORATION OF CARLSLE

221 COLLEGE STREET - PHONE 289-2261

Carlsle, Kentucky 40311

Open Friday 10 A.M. to 7 P.M.



Fister's Gardens

Sylvester Fister - Owner

Fister's Gardens are located off Highway 48 on Owen Road in Paris, phone 987-1323 offers a complete selection of all types of plants, shrubs, flowers, and tree stock that you can choose from.

It is a progressive firm in the area of landscaping help to beautify a home, but it increases its value as well. When you select shrubbery or trees for your yard, it is as permanent as the home itself.

When you are in the market for crab limestone be sure to go to this firm.

Crushed limestone is the business of the Bourbon Limestone Company located on French Mill Road, just West of Paris, phone 987-4125.

This experienced sand and gravel company is known in this section for a reputation of honesty and reliability.

When you are in the market for the highest grade of lumber and building materials that is available in this area, you should go to this firm.

Customers at all times whether the request be in person or over the telephone. Their reputation as honest and straight forward business people extends far and wide.

Paris Monument Works, Inc.

This firm is located at 1491 South Main Street in Paris, phone 987-5266.

customers at all times whether the request be in person or over the telephone.

Special service and comprehensive information will be given to prospective customers.

Bourbon Laundry & Dry Cleaners

The Bourbon Laundry & Dry Cleaners, phone 987-4445, at 147 West 7th Street in Paris, is famous for the quality of their work.

People are often judged by their appearance. Our clothes mean a great deal in making that first impression.

leaves from around the house and from the lawn. Leaves will smother the grass if they are too deep and remain on the grass for very long.

Reduce the amount of energy you use each time you use each item.

Reduce the time you use each item.

Reduce the physical condition of your home.

Reduce the amount of energy you use each time you use each item.

Reduce the time you use each item.

Reduce the physical condition of your home.

Reduce the amount of energy you use each time you use each item.

Reduce the time you use each item.

Reduce the physical condition of your home.

Reduce the amount of energy you use each time you use each item.

Reduce the time you use each item.

Reduce the physical condition of your home.

Reduce the amount of energy you use each time you use each item.

Sutherland Realty Company

Ed Sutherland Broker-Auctioneer

A modern efficient service, as necessary to every community, is handled in a friendly, efficient manner by Sutherland Realty Company at 300 Pleasant in Paris, phone 987-3100.

When you are in the market for crab limestone be sure to go to this firm.

Crushed limestone is the business of the Bourbon Limestone Company located on French Mill Road, just West of Paris, phone 987-4125.

This experienced sand and gravel company is known in this section for a reputation of honesty and reliability.

When you are in the market for the highest grade of lumber and building materials that is available in this area, you should go to this firm.

Customers at all times whether the request be in person or over the telephone.

Special service and comprehensive information will be given to prospective customers.

Bourbon Laundry & Dry Cleaners

The Bourbon Laundry & Dry Cleaners, phone 987-4445, at 147 West 7th Street in Paris, is famous for the quality of their work.

People are often judged by their appearance. Our clothes mean a great deal in making that first impression.

leaves from around the house and from the lawn. Leaves will smother the grass if they are too deep and remain on the grass for very long.

Reduce the amount of energy you use each time you use each item.

Reduce the time you use each item.

Reduce the physical condition of your home.

Reduce the amount of energy you use each time you use each item.

Reduce the time you use each item.

Reduce the physical condition of your home.

Reduce the amount of energy you use each time you use each item.

Reduce the time you use each item.

Reduce the physical condition of your home.

Reduce the amount of energy you use each time you use each item.

Reduce the time you use each item.

Reduce the physical condition of your home.

Reduce the amount of energy you use each time you use each item.

Reduce the time you use each item.

Reduce the physical condition of your home.

Reduce the amount of energy you use each time you use each item.

Reduce the time you use each item.

Sutherland Realty Company

Ed Sutherland Broker-Auctioneer

A modern efficient service, as necessary to every community, is handled in a friendly, efficient manner by Sutherland Realty Company at 300 Pleasant in Paris, phone 987-3100.

When you are in the market for crab limestone be sure to go to this firm.

Crushed limestone is the business of the Bourbon Limestone Company located on French Mill Road, just West of Paris, phone 987-4125.

This experienced sand and gravel company is known in this section for a reputation of honesty and reliability.

When you are in the market for the highest grade of lumber and building materials that is available in this area, you should go to this firm.

Customers at all times whether the request be in person or over the telephone.

Special service and comprehensive information will be given to prospective customers.

Bourbon Laundry & Dry Cleaners

The Bourbon Laundry & Dry Cleaners, phone 987-4445, at 147 West 7th Street in Paris, is famous for the quality of their work.

People are often judged by their appearance. Our clothes mean a great deal in making that first impression.

leaves from around the house and from the lawn. Leaves will smother the grass if they are too deep and remain on the grass for very long.

Reduce the amount of energy you use each time you use each item.

Reduce the time you use each item.

Reduce the physical condition of your home.

Reduce the amount of energy you use each time you use each item.

Reduce the time you use each item.

Reduce the physical condition of your home.

Reduce the amount of energy you use each time you use each item.

Reduce the time you use each item.

Reduce the physical condition of your home.

Reduce the amount of energy you use each time you use each item.

Reduce the time you use each item.

Reduce the physical condition of your home.

Reduce the amount of energy you use each time you use each item.

Reduce the time you use each item.

Reduce the physical condition of your home.

Reduce the amount of energy you use each time you use each item.

Reduce the time you use each item.

Reduce the physical condition of your home.

1040 U.S. Individual Income Taxpayers Ask IRS

This column of questions and answers on federal tax matters is provided by the local office of the U.S. Internal Revenue Service and is published as a public service to taxpayers.

Q. I'm a teacher. I'm required to get on a master's degree in education to hold on my job. Are my education expenses, including tuition, tax deductible?

A. Yes, if you meet the minimum educational requirements for your profession in your employment, and if your education is necessary to produce taxable income.

Q. Can an individual taxpayer ever deduct legal expenses?

A. Yes, legal expenses that are a direct result of producing taxable income are normally deductible.

Q. This fall, my son went away to school. Because he no longer lives with me, will I lose him as a dependent?

A. No, in general, a dependent relative does not have to live with you to be a member of your household for you to claim him as a dependent.

Q. Are "points" paid on a home mortgage deductible as interest expense?

A. Yes, the term "points" is sometimes used to describe the charges a borrower pays to a lender as an origination fee, maximum loan charges, or other charges.

Q. I have a large amount of medical expenses last month. Will that qualify me for a refund?

A. Yes, provided the increase in estimated itemized deductions enables you to claim additional withholding allowances.

Q. My son is paying his own college tuition this year. Will this have any effect on whether or not I can claim him as a dependent?

A. Yes, payments for educational expenses are counted in determining total support. If you and your son furnish his total support for the year and your son spends more on his support items, such as food, shelter, clothing, education, etc., you may still claim him as a dependent.

Q. I have a large amount of medical expenses last month. Will that qualify me for a refund?

A. Yes, provided the increase in estimated itemized deductions enables you to claim additional withholding allowances.

Q. My son is paying his own college tuition this year. Will this have any effect on whether or not I can claim him as a dependent?

A. Yes, payments for educational expenses are counted in determining total support. If you and your son furnish his total support for the year and your son spends more on his support items, such as food, shelter, clothing, education, etc., you may still claim him as a dependent.

Q. I have a large amount of medical expenses last month. Will that qualify me for a refund?

A. Yes, provided the increase in estimated itemized deductions enables you to claim additional withholding allowances.

Q. My son is paying his own college tuition this year. Will this have any effect on whether or not I can claim him as a dependent?

A. Yes, payments for educational expenses are counted in determining total support. If you and your son furnish his total support for the year and your son spends more on his support items, such as food, shelter, clothing, education, etc., you may still claim him as a dependent.

Q. I have a large amount of medical expenses last month. Will that qualify me for a refund?

A. Yes, provided the increase in estimated itemized deductions enables you to claim additional withholding allowances.

Q. My son is paying his own college tuition this year. Will this have any effect on whether or not I can claim him as a dependent?

A. Yes, payments for educational expenses are counted in determining total support. If you and your son furnish his total support for the year and your son spends more on his support items, such as food, shelter, clothing, education, etc., you may still claim him as a dependent.

Q. I have a large amount of medical expenses last month. Will that qualify me for a refund?

A. Yes, provided the increase in estimated itemized deductions enables you to claim additional withholding allowances.

Q. My son is paying his own college tuition this year. Will this have any effect on whether or not I can claim him as a dependent?

A. Yes, payments for educational expenses are counted in determining total support. If you and your son furnish his total support for the year and your son spends more on his support items, such as food, shelter, clothing, education, etc., you may still claim him as a dependent.

1040 U.S. Individual Income Taxpayers Ask IRS

This column of questions and answers on federal tax matters is provided by the local office of the U.S. Internal Revenue Service and is published as a public service to taxpayers.

Q. I'm a teacher. I'm required to get on a master's degree in education to hold on my job. Are my education expenses, including tuition, tax deductible?

A. Yes, if you meet the minimum educational requirements for your profession in your employment, and if your education is necessary to produce taxable income.

Q. Can an individual taxpayer ever deduct legal expenses?

A. Yes, legal expenses that are a direct result of producing taxable income are normally deductible.

Q. This fall, my son went away to school. Because he no longer lives with me, will I lose him as a dependent?

A. No, in general, a dependent relative does not have to live with you to be a member of your household for you to claim him as a dependent.

Q. Are "points" paid on a home mortgage deductible as interest expense?

A. Yes, the term "points" is sometimes used to describe the charges a borrower pays to a lender as an origination fee, maximum loan charges, or other charges.

Q. I have a large amount of medical expenses last month. Will that qualify me for a refund?

A. Yes, provided the increase in estimated itemized deductions enables you to claim additional withholding allowances.

Q. My son is paying his own college tuition this year. Will this have any effect on whether or not I can claim him as a dependent?

A. Yes, payments for educational expenses are counted in determining total support. If you and your son furnish his total support for the year and your son spends more on his support items, such as food, shelter, clothing, education, etc., you may still claim him as a dependent.

Q. I have a large amount of medical expenses last month. Will that qualify me for a refund?

A. Yes, provided the increase in estimated itemized deductions enables you to claim additional withholding allowances.

Q. My son is paying his own college tuition this year. Will this have any effect on whether or not I can claim him as a dependent?

A. Yes, payments for educational expenses are counted in determining total support. If you and your son furnish his total support for the year and your son spends more on his support items, such as food, shelter, clothing, education, etc., you may still claim him as a dependent.

Q. I have a large amount of medical expenses last month. Will that qualify me for a refund?

A. Yes, provided the increase in estimated itemized deductions enables you to claim additional withholding allowances.

Q. My son is paying his own college tuition this year. Will this have any effect on whether or not I can claim him as a dependent?

A. Yes, payments for educational expenses are counted in determining total support. If you and your son furnish his total support for the year and your son spends more on his support items, such as food, shelter, clothing, education, etc., you may still claim him as a dependent.

Q. I have a large amount of medical expenses last month. Will that qualify me for a refund?

A. Yes, provided the increase in estimated itemized deductions enables you to claim additional withholding allowances.

Q. My son is paying his own college tuition this year. Will this have any effect on whether or not I can claim him as a dependent?

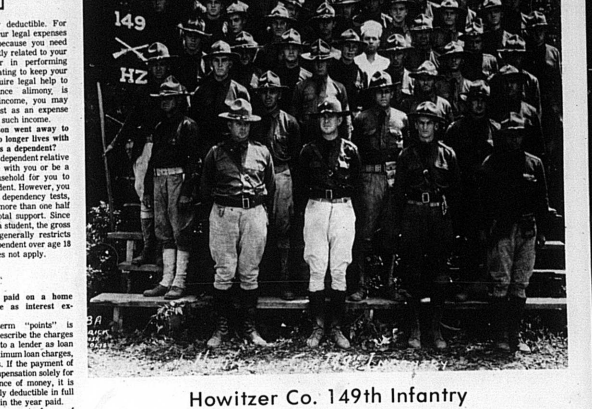
A. Yes, payments for educational expenses are counted in determining total support. If you and your son furnish his total support for the year and your son spends more on his support items, such as food, shelter, clothing, education, etc., you may still claim him as a dependent.

Q. I have a large amount of medical expenses last month. Will that qualify me for a refund?

A. Yes, provided the increase in estimated itemized deductions enables you to claim additional withholding allowances.

Q. My son is paying his own college tuition this year. Will this have any effect on whether or not I can claim him as a dependent?

A. Yes, payments for educational expenses are counted in determining total support. If you and your son furnish his total support for the year and your son spends more on his support items, such as food, shelter, clothing, education, etc., you may still claim him as a dependent.



Howitzer Co. 149th Infantry

NOTICE TO PUBLIC

SCHOOLS ALL COUNTY SCHOOL RATE LAID

COOKING FOR ARTISTS

RESIDENTIAL

COMMERCIAL LIGHTING AND POWER SERVICE

REID & VICE, INC.

REID & VICE, INC.

REID & VICE, INC.

REID & VICE, INC.

REID & VICE, INC.

REID & VICE, INC.

REID & VICE, INC.

REID & VICE, INC.

REID & VICE, INC.

REID & VICE, INC.

REID & VICE, INC.

REID & VICE, INC.

REID & VICE, INC.

REID & VICE, INC.

REID & VICE, INC.

REID & VICE, INC.