

# More Food Savings Specials for

## U.S. Choice Round Steak

Mrs. Filberts 1 lb. stk. Margarine 4/51

NORTHERN Towels 2 roll 3/51 pkc

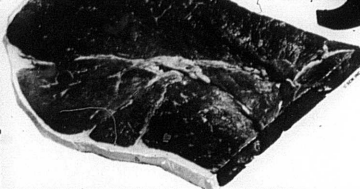
160 ct. NORTHERN Napkins 3/69¢

10 oz. Cheerios Cereal 29¢

8 oz. Total Cereal 29¢

Betty Crocker Cake Mixes 3/89¢

Betty Crocker Blueberry Muffin Mix 39¢



U.S. Choice Boneless Rump or Sirloin Tip ROAST lb. \$1.19

## U.S. Choice Freezer Beef Sale

Fore Quarters lb. 59¢ Hind Quarters lb. 79¢  
Sides lb. 69¢ Whole Rounds lb. 79¢ Trim Loins lb. 99¢  
Prices include cutting and wrapping, ready for freezer.

### Grade A Fresh Dressed Whole Fryers

lb. 27¢  
Cut-Up lb. 33¢



Big Wally Wall Cleaner 24 oz. 1 1/2  
Stokely Gatorade lemon, lime ct. 3/1  
Stokely Ping Pong 46 ct. 3/1  
Stokely Corn 303 4/1  
School Day Cut Green Beans 303 4/1  
Stokely Mixed Vegetables 303 4/1  
Ajax Cleaner 40 oz. 79¢  
Lipton Tea Bags 100 ct. 52¢  
Bes Pak Waste Basket Bags 49¢  
Mrs. Owens Preserves assorted flavors 10 oz. 39¢  
Dan-Dee Preserves assorted 18 oz. 39¢  
Pepsi or Diet Pepsi 8 pack 16 oz. with bottles 79¢

Red Delicious 3 lb. bag 49¢  
Apples 49¢  
Bananas 10¢ lb.  
Barlett Pears 6/49¢  
Louisiana Yams 2 lbs. 25¢

### COMPLETE LINE OF HALLOWEEN CANDY

Dish All giant size (14 pack) 49¢  
Rinsol Detergent King Size 99¢  
Bath size Safeguard 2/39¢  
Maxwell House COFFEE 59¢ lb.  
Instant Coffee \$1.09 (12 oz. bonus)  
The Spirit of Quality FOODTOWN  
Lux Liquid Giant Size 39¢  
Curly Top Toddler 24's Diapers \$1.39  
king size Downy Fab Softener 99¢  
Com. size Zest Bar Soap 2/29¢

21 oz. Comet Cleanser 19¢

1 lb. Zesta Crackers 29¢

22 oz. Spray Starch Easy On 39¢

Bes-Pak Tall Kitchen Can Bins 15 ct. 39¢

22 1/2 oz. Pillsbury Family BROWNIE MIX 2/99¢

Pillsbury Box Frosting Mix 3/51

15 oz. Top Job Top Job Cleaner 29¢

## AGREE or NOT I Say What I Think

by S. C. VanCuren

FRANKFORT—Coal production is going to have to increase in Kentucky if revenue from the severance tax produces the \$40 million estimated for fiscal year 1972-73.

For the first three months of this fiscal year, July through September, total collections on the four per cent severance tax brought the state a total of \$5,703,922.45. The Eastern Kentucky Coalfield is producing the West Kentucky field by nearly two to one according to figures supplied the Department of Revenue by the State Department of Mines and Minerals.

For the first three months, July, August, September, this fiscal year production was 18,465,000 tons. Charlie Williamson, in charge of the severance tax collection in the sales tax division of the Department of Revenue, said he is somewhat optimistic that production will increase and the budget figure will be met.

The tax bill calls for a minimum tax of 30 cents per ton on all coal mined or four per cent of its sales value, whichever is the lesser. Williamson said the revenue Department estimates that production this year to attain the \$40 million in tax.

Kentucky didn't produce that much coal last year. The production was 17,107,352 according to figures furnished by the Department of Mines and Minerals. It was down from the 1970 production of 17,500,300 tons. Williamson's banner production year. These figures are for the calendar year and not the fiscal year.

Williamson said one of the optimistic features that makes him believe the budget figure will be attained this year is "about one third of the coal taxed is paid on the basis of value rather than the minimum of 30 cents a ton". This means that about a third of the coal is bringing \$8 a ton or more. This metallurgical coal is produced chiefly by Eastern Kentucky where the ash and sulphur content is low.

Western Kentucky produces a steam coal or coal with a high sulphur content. Williamson also commented that coal production picks up in the winter months and explained the demand from the export market in recent months because of a loss in demand from the export market and because industries stockpiled during the shortage across several months ago.

Williamson said collection proceeds have not been increased since the tax became effective the first of last May. The severance tax was part of the governor's plan to reduce the state's income tax rate from repeal of the five per cent sales tax on take-home groceries. The grocery tax brought in about \$65 million a year. There were several other increases in tax when computing the state income tax, students at state-supported colleges and universities.

Coal producers, especially in Eastern Kentucky, have blamed the severance tax for reduction in demand for coal. They claim it puts them at an unfair advantage over other states in coal markets.

## COMMISSIONER BUTLER LOOKS AT Agriculture



Wendell P. Butler Commissioner of Agriculture

Frankfort Spotlight progressive industry

Kentucky's pork producers are completing their first "Porkfest," a special promotional program.

"October Porkfest" has been a national campaign, sponsored by the National Pork Council and respective state associations.

Comable time and money went into the program, and it's real unfortunate that Kentucky and several other states were facing a cholera problem during the time it was to be kicked off.

Of course hog cholera does not present a health hazard to humans, but many producers perhaps found it difficult to think about promotion when their herds were being threatened.

However, as an industry representative adds, some positive publicity was needed to offset the cholera problem. Producers were experiencing...

Under an agreement just reached between EKU, State Police and the Kentucky Department of Education, 41 troopers will be on campus weekly beginning Oct. 23 to attend a special five-day training program at Eastern's School of Law Enforcement.

In all, about 412 troopers are expected to complete the program.

Gov. Wendell Ford, who recently disclosed the program, said it was organized "to give the trooper in the patrol car the benefit of the latest information available in several important areas of law enforcement."

Farmer and tradesmen in rural England still find horse-drawn carts are economical, which is good news for Cypriotes who gather each June at the Appleby Fair. They have been trading horses at the fair since it began in 1750, the National Geographic says.

Feeder pig production is big business in Kentucky, with farm area producing over 350,000 pigs each year. Because of this, Kentucky is a major supplier of pigs to feeders in grain states.

Feeder pigs make up an important part of our meat supply, and pork producers would like to see the pig to become even more popular with consumers. As the Kentucky Pork Producers say, "they want the consumer to know that their pork has less fat and fewer calories than ever before."

Coleman L. McGuire, Louisville, was re-elected president of the Kentucky Eastern Seal Society for Crispbread Children and Adults at the society's 49th annual meeting in Lexington on Oct. 19.

Volunteers from all over Kentucky attended the one-day meeting at Cardinal Hill Hospital, an Eastern Seal facility serving the physically handicapped since 1956.

The Kentucky Army National Guard was cited by the society in recognition of outstanding participation and support of Eastern Seal programs, by the members of the National Guard and Lt. Colonel Raymond G. Alfaro, public affairs officer of the National Guard in Kentucky.

## State Troopers on EKU campus

Public Assistance received in Nicholas

During July, 412 Nicholas county residents received public assistance money payments totaling \$19,269, the Department of Economic Security, Frankfort, announced today.

This figure compares to \$18,944 paid to 410 persons during June of this year. In July 1971, 426 people in Nicholas county received public assistance money payments totaling \$19,571.

Of the total, 186 persons, including children, received assistance in the Aid to Families with Dependent Children (AFDC) category and 2201 persons received money payments under Aid to the Aged, Blind and Disabled (AABD). Statewide in July, 24,095 Kentuckians received public assistance money payments totaling \$10,106,276.

## Give Your Vote To Ronald McDonald For Nicholas County School Board District 1

Barterville and Headquarters He is the Father of a second grader

Owns and operated McDonald's 24 hr. Refrigeration, Heating and Air Conditioning Service.

## MSU to conduct ten institutes

Morehead State University has been selected as the Kentucky Instructional Development Agency in the federally-funded National Special Media Institutes Program.

MSU will conduct 40-hour instructional Development Institutes in 10 Eastern Kentucky school districts during the 1972-73 school year.

The institutes are designed to assist school board members, instructional supervisors and administrators in solving learning and instructional problems.

Dr. Russell Bowen, Dr. John Payne, Dr. Robert Newham and William Rosenberg of MSU's School of Education attended a week-long training program last week in Washington, D.C.

They will attend the second phase of the training program Nov. 13-15 in Washington. After completing the training, they will be qualified to conduct Instructional Development Institutes throughout Kentucky.

Dr. Bowen is directing the project.

On ancient maps Syria encompassed all of the fertile land, between the Mediterranean Sea and the Arabian desert from the Gulf of Alexandria to Siam. It was the "bread basket" of the Roman Empire.

### we make electrical repairs

Service your TV or Radios Contract Wiring—Call for a FREE Estimate!

## DUNCAN'S ELECTRICAL SHOP

Easter Seal elects Coleman L. McGuire

## NOW! NEW DECORATOR STYLES and COLORS.

### NEW! 12" x 12" DESIGNER SQUARES.

Just strip off the paper backing... peel down the tile

## FLINTKOTE peel-stick tile

GUARANTEED TO STICK with moisture activated manufacturer's instructions contained in every package

Reid & Vice, Inc.

We now carry a line of Hand Painted China in many designs by Mrs. Hazel D. Ammerman.

Mrs. Ammerman paints the Kentucky Cardinal for State Parks.

Ash Trays Spoon Tray Salt & Pepper Switch Plates Sugar & Creamer Cup & Saucer Jewelry

We also have a limited edition of Frost prints of the Jacktown Bridge and the Log Cabin.

## HOPKINS DRUG STORE

Call 289-5122

## THE BEST SHOWIN TOWN

THE DODGE BOYS PROUDLY PRESENT

Dodge AUTHORIZED DEALERS



1973 DODGE CLUB CAB.

SEE PICKUP HISTORY BEING MADE

FASTER THAN A SPEEDING BULLET

SEE THE GREAT HIDEOUT

NEW ELECTRONIC IGNITION!

EXTRA CARGO SPACE INSIDE THE CAB.

SEE THE GRIPPING POWER OF FRONT DISC BRAKES.

Now playing at the Dodge Boys!

You get 34 cubic feet of extra cargo space behind the seat inside the new Dodge Club Cab. And it has all the standard features of the regular Dodge pickups.

Depend on the Dodge Boys for dependable service—they care about you.

## Buntin's Garage

Elm & Market Sts. Carlisle, Kentucky

THE DODGE BOYS