

Nixon beats McGovern here, nationally



Local precinct count to be published next week
Huddleston over Nunn 8-5; Perkins wins 7th district

OFFICES



Democratic Party



Republican Party



American Party



Socialist Workers Party



Communist Party



People's Party

Unofficial vote tally in Nicholas County

1	2	3
804	1139	1028
1,076	741	595
18	20	30
19	19	30
1E	2E	3E
166	43	95

School Ballot Division Number 1

166	43	95
-----	----	----



"See, not in worry-he apparently got his..."

Obituaries

MRS. HENRY MYNAR
Mrs. Margaret Mynar, 59, died Saturday, Nov. 4, 1972, at the Nicholas County Hospital.
She was a native of Mercer county, member of the Carlisle Baptist Church. She is survived by her husband, Henry Mynar; one step-son, Roger Mynar, Lexington; one step-daughter, Mrs. Jean Sayer, Louisville; one sister, Mrs. Hester Holshaw, Cleveland, Ohio; six step-grandchildren.

Funeral services were conducted Monday from the Mathers Shearer Chapel, by Rev. Robert Mynar and Rev. Dallas Suge. Burial in the Harrodsburg Cemetery. Pallbearers: John Ring, James Mynar, Eugene Wagner, Carl Gay, Clyde Smith, Hubert Hamilton.

JOHN W. MCCARTY
John W. McCarty, 80, died Tuesday, Oct. 31, 1972, at the Miller Nursing Home in Lexington, after an illness of two years. He was a native of Nicholas county, a member of the Cassidy United Methodist Church and a retired farmer.

He is survived by one daughter, Mrs. Christine Fair of Elizabethtown; one son, James McCarty, Lexington; one sister, Mrs. John Hall, Nicholas county; 14 grandchildren.

Services were held Thursday at the Mathers Shearer Chapel, conducted by Rev. Scott Briggs and Rev. George Mitchell. Burial in the Carlisle Cemetery. Pallbearers: Eddie R. Shanks, Robert Harper, Henry Barrett, Conway Telford, Floyd Clark and Eugene Letcher.

Woman's Club gives halloween party

Members of the Carlisle Junior Woman's Club entertained members of the Nicholas County Elementary School's Special Education classes with a Halloween party on Tuesday, Oct. 31. Games were played, refreshments served, and bags of Trick or Treat candy were issued to 20 children and their guests.

State's largest lake to open in '74

SALT LICK, Ky.—There's little to see now, only tons of mud and miles of bulldozer tracks, but in 1974 the waters of Kentucky's fifth largest lake will begin rising here behind Cave Run Dam.

And residents of the Bath, Rowan, Menifee, Morgan and Elliott county areas hope their local economy will begin rising right along with the waters of Cave Run Reservoir.

The Corps of Engineers, describing the project for newsmen during a recent tour, say the dam will be finished late next year. They hope to begin impounding the reservoir in January of 1974 so that the lake will be at least partially ready for fishermen and swimmers in the summer.

It's been a long time coming. Congress originally authorized the Licking River project almost 40 years ago, but construction did not begin until 1965. Bad weather, labor problems and federal food shortages have forced the projected completion date to be moved back several times.

Spindletop Research, in a study of the project, estimates the lake could bring one million people per year into the area. The U.S. Forest Service, which will administer the lake area, estimates the facility could bring annually \$5 million into the five counties the lake will touch.

That could be a big shot in the arm for an area of the state that long has been generally undeveloped.

In future visitors to the area, recreational facilities are being planned that will include a lodge, swimming pool, campgrounds, picnic areas, a 2000-foot beach, hiking trails, boat ramps and a marina.

When filled, Cave Run will cover some 870 acres, making it Kentucky's fifth largest lake, with an estimated shore line of about 200 miles. The final cost of the project will be about \$45 million.

Just below the dam, the state Department of Fish and Wildlife is putting the finishing touches on its \$2 million Minor Clark Fish Hatchery, a 300-acre facility which could become quite a tourist attraction itself.

Built entirely with revenue from license fees and taxes on fishing equipment, the hatchery primarily will be used to produce four species of game fish: largemouth bass, striped bass, walleye and muskie.

Another project, now in planning stages, is a planned upstream in Morgan county.

According to the department's fisheries division, the hatchery will produce about one million largemouth bass per year when fully operational. About 100,000 each of the other three species also will be produced each year.

One of the largest and most modern warm water hatcheries in the nation, the facility includes more than 100 acres of brood ponds and holding basins for forage fish.

NEAL'S KEY

SQUARE DEAL GROCERY FOOD STORES

U.S. Choice **Round Steak** lb. 99¢

U.S. Choice **Swiss Steak** lb. 99¢

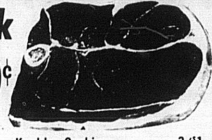
Ground Beef 2 lbs. \$1.99

U. S. Choice **Sirloin Steaks** lb. \$1.99

U. S. Choice **T-Bone Steaks** lb. \$1.99

Sirloin Tip or Rump Roasts lb. 99¢

Stew Beef Boneless lb. 99¢



Keekler Cookies 3/1

Old Fashioned Oatmeal 13 oz., Fig Bars 14 oz., Old Fashioned Sugar 13 oz.

Delsey 2 roll pkg.

Toilet Tissue 2/45¢

Stokely Frozen 10 oz.

Chopped Broccoli 2/35¢

Stokely Frozen 10 oz.

Green Peas 2/35¢

Paramount 16 oz. Candied/Dill Sticks 59¢

Orange Juice Donald Duck 46 oz. 43¢

Grapefruit Juice Donald Duck 46 oz. 43¢

Hungry Jack 10 ct.

Butter Tustin Biscuits 2/47¢

Bayer Aspirin 100 tablets 93¢

Phillips 12 oz. 89¢

Milk of Magnesia 32 oz. \$1.99

Potatoes 89¢

Idaho 10 lb. bag

New Green Cabbage lb. 10¢

Golden Ripe Bananas lb. 10¢

