

# Will Nixon ask Peking about heroin?

In his dealings with Red China it is to be expected that much of the "dialogue" between President Nixon and dictator Chou En-lai will be little more than polite talk. But there is one question Mr. Nixon should pay attention to. Communist in plain and simple language. When he goes to Peking to stop heroin production and sales throughout the world, especially to the soldiers in Asia. When are you going to stop smuggling heroin into the United States?

Almost every month for the last year has been a new report about China's role as the world's largest heroin refiner, maker, shipper and smuggler of deadly heroin-morphine drugs. A recent detailed report by the Institute of International Studies featured an article entitled "Chinese Communist Production and Sale of Heroin in Asia. Heroin is produced on the locations of opium farms, refineries and shipping points throughout Asia, and the purity of the different types of heroin produced.

In the November "Issues and Studies," Dr. Gertraud Posony dated the Huang report. Posony went even further and stated that Red China is the world's largest producer of opium product.

The various refining processes require a high degree of skill, production and equipment, plus

close supervision of the opium fields, with modern farming techniques. By a systematic analysis of existing data, the writer concludes that there has to be one major industrial base for the production of the very pure heroin which has a price of \$100,000 throughout Asia in the last few years. The heroin that is adding our men in Vietnam is sold very cheaply on the streets, yet it is 96-100% pure, a purity that is impossible to achieve in the isolated hills of Burma, Thailand or Laos. The American public is being deliberately misled on the heroin problem because we have been blaming the wrong people, Turkey has cut her production heavily, and the amounts grown by the tribal groups in Asia are small. High American officials will even mention Red China as the source of the world's illicit narcotics, for "offending the Communists."

Our men are being deliberately turned into addicts in Asia, and our youth-in-America are being destroyed through addiction. President Nixon must be firm in demanding of the Chinese Communists: "When are you going to stop your production of heroin? Where is your plan to stop our drug production? Where does it start? In Red China?"

# MERCURY VAPOURS

by Warren R. Fisher

Some of my brethren profess they have their editorial page made up well in advance of the beginning of the week.

I, for one, find it difficult even to get to the job done by the morning of the week I expect to publish. It is not that I am an exacting editor, but seemingly there is always something that I think I should do. procrastination suggests itself. I will call on Saturday that I should be out on Monday and possibly Tuesday if I am not to get the job done immediately.

Now if the procrastination naturally inflicted all kit building, I know that the financial loss that would occur, kit manufacturing companies would be no more, electronic parts manufacturers would lose a large part of their printing capabilities wouldn't have fancy process color catalogs, lithographs, the mail man wouldn't have to waste his way through auto and snow to deliver such. Think of the soldering irons that wouldn't draw electricity, current, then the power control panel would be used as much coal as this... this line of reasoning is endless.

Funny though, this is one way to make up an editorial page.

Why do I need a battery charger? Well, I need a battery charger to keep a battery charged. I use one on my fishing boat to run an electric motor that pushes or pulls, as the case may be, I don't care for fishing in the rain or in the sun. I don't care to fly, and spring will soon be upon me.

Additionally, I have several cables invested, drawing no interest. And I won't have the time of putting it together.

Now if the procrastination naturally inflicted all kit building, I know that the financial loss that would occur, kit manufacturing companies would be no more, electronic parts manufacturers would lose a large part of their printing capabilities wouldn't have fancy process color catalogs, lithographs, the mail man wouldn't have to waste his way through auto and snow to deliver such. Think of the soldering irons that wouldn't draw electricity, current, then the power control panel would be used as much coal as this... this line of reasoning is endless.

Funny though, this is one way to make up an editorial page.

# GRASS ROOTS

I have often wondered what a better world it would be if the folks who seem to be in charge of our country, or rather, of our country's affairs, were to be constructed by the people who are the backbone of our country. I don't mean the politicians who are the backbone of our country, I mean the people who are the backbone of our country.

I have often wondered what a better world it would be if the folks who seem to be in charge of our country, or rather, of our country's affairs, were to be constructed by the people who are the backbone of our country. I don't mean the politicians who are the backbone of our country, I mean the people who are the backbone of our country.

# THE DIEB TYPER

by Warren R. Fisher

The things that happened to Adam and Eve could be blamed on a deprived childhood. I know, I had one myself. There were two things I was deprived of and that's why I'm the way I am.

First was to have a play area and know how to throw my voice. My boys had a play area when I was a sprout, but this was called a Jews harp, although the Jewish people were too smart to believe the explanation. It was an electronic circuit which prevents overcharging of a storage battery. It was a battery in that it won't charge at a rate too fast between the times, or two other features. The technical explanation of why it doesn't do any of the wrong things is a little mope, deep, so I'll just quit that.

Now, I know the question arises, "Well, this company is 'dangerous'; they continue to mail me catalogs of their wares-it won't be long before I had three kids, all different gauges, sitting on the top of my head, and I would move me to put them together. At the moment, I would much rather be working on a very charger kit, that has, if I am to believe the explanation, an electronic circuit which prevents overcharging of a storage battery. It was a battery in that it won't charge at a rate too fast between the times, or two other features. The technical explanation of why it doesn't do any of the wrong things is a little mope, deep, so I'll just quit that.

# Happiness was learning to play a mouth organ or throwing your voice

by Warren R. Fisher

Roman soldier, who was to nail Jesus to the cross. The gypsy was able to steal just one of the extra long line for Jesus' head or heart. The soldier suspected the gypsy and beat him unmercifully to make him tell where the voice would not tell.

I was told the gypsy from the cross that the earth and steel.

This story is a suspect as tying your shoes in a watermelon patch.

The worst thing about no-fault insurance is it has too many faults. And it must be driving insurance companies up the wall. No-fault insurance, in some states it has to be automobile owners, against all the principles of insurance.

Insurance companies have spent fortunes on dressing up fine print and hiring sticky investigators and slick lawyers to find out whose fault it is when something happens to your car. It's like getting a doctor and you turn into a broken, lonely recluse because it's nobody's fault.

It's like getting a doctor and you turn into a broken, lonely recluse because it's nobody's fault.

# The Carlisle Mercury

Established 1857  
Published on Thursdays, 222 Locust Street, Carlisle, Nicholas County, Kentucky

Warren R. Fisher, Editor & Publisher  
Katherine C. Fisher, Associate Editor  
M. J. Hays, Editor

Subscription Rates: In Kentucky, one year \$4.00, outside \$4.20. Out-of-State, one year \$5.00.

MEMBER: THE NATIONAL PRESS ASSOCIATION

THE NATIONAL NEWSPAPER PUBLISHERS ASSOCIATION

# DEPOSIT BANK OF CARLISLE, KY.

Our Second Century of Dependable and Dignified Service

ESTABLISHED 1856

Phone: 228-2205

MEMBER FEDERAL RESERVE SYSTEM

MEMBER FEDERAL DEPOSIT INSURANCE CORPORATION

# 20 and 40 years ago

Thursday, February 7, 1952

C. C. Myers, Frank Hughes, Bert Duncan and Alvin Roe, six of Carlisle's 40-year-old residents were cut up in the 1972 election. They were cut up in the 1972 election. They were cut up in the 1972 election.

Thursday, February 4, 1932  
Fire originating in a three-story dwelling house which had been converted into a feed room destroyed the building and threatened the lives of the occupants. The fire was caused by a cigarette left unattended by Mr. S. T. Barlow at Headquarters.

Thursday, February 4, 1932  
Fire originating in a three-story dwelling house which had been converted into a feed room destroyed the building and threatened the lives of the occupants. The fire was caused by a cigarette left unattended by Mr. S. T. Barlow at Headquarters.

Thursday, February 4, 1932  
Fire originating in a three-story dwelling house which had been converted into a feed room destroyed the building and threatened the lives of the occupants. The fire was caused by a cigarette left unattended by Mr. S. T. Barlow at Headquarters.

Thursday, February 4, 1932  
Fire originating in a three-story dwelling house which had been converted into a feed room destroyed the building and threatened the lives of the occupants. The fire was caused by a cigarette left unattended by Mr. S. T. Barlow at Headquarters.

Thursday, February 4, 1932  
Fire originating in a three-story dwelling house which had been converted into a feed room destroyed the building and threatened the lives of the occupants. The fire was caused by a cigarette left unattended by Mr. S. T. Barlow at Headquarters.

Thursday, February 4, 1932  
Fire originating in a three-story dwelling house which had been converted into a feed room destroyed the building and threatened the lives of the occupants. The fire was caused by a cigarette left unattended by Mr. S. T. Barlow at Headquarters.

Thursday, February 4, 1932  
Fire originating in a three-story dwelling house which had been converted into a feed room destroyed the building and threatened the lives of the occupants. The fire was caused by a cigarette left unattended by Mr. S. T. Barlow at Headquarters.

Thursday, February 4, 1932  
Fire originating in a three-story dwelling house which had been converted into a feed room destroyed the building and threatened the lives of the occupants. The fire was caused by a cigarette left unattended by Mr. S. T. Barlow at Headquarters.

Thursday, February 4, 1932  
Fire originating in a three-story dwelling house which had been converted into a feed room destroyed the building and threatened the lives of the occupants. The fire was caused by a cigarette left unattended by Mr. S. T. Barlow at Headquarters.

Thursday, February 4, 1932  
Fire originating in a three-story dwelling house which had been converted into a feed room destroyed the building and threatened the lives of the occupants. The fire was caused by a cigarette left unattended by Mr. S. T. Barlow at Headquarters.

Thursday, February 4, 1932  
Fire originating in a three-story dwelling house which had been converted into a feed room destroyed the building and threatened the lives of the occupants. The fire was caused by a cigarette left unattended by Mr. S. T. Barlow at Headquarters.

# FARM AND HOME

County Extension Agents

Katli J. Huffington

Nora Swango, Mrs. Margie Wilson

A dairy cow produces about half of her total milk production in a 30-day lactation period in the first 120 days. To hold up under the stress of calving and heavy production, the cow must be in good body condition when she calves.

A dairy cow produces about half of her total milk production in a 30-day lactation period in the first 120 days. To hold up under the stress of calving and heavy production, the cow must be in good body condition when she calves.

A dairy cow produces about half of her total milk production in a 30-day lactation period in the first 120 days. To hold up under the stress of calving and heavy production, the cow must be in good body condition when she calves.

A dairy cow produces about half of her total milk production in a 30-day lactation period in the first 120 days. To hold up under the stress of calving and heavy production, the cow must be in good body condition when she calves.

A dairy cow produces about half of her total milk production in a 30-day lactation period in the first 120 days. To hold up under the stress of calving and heavy production, the cow must be in good body condition when she calves.

A dairy cow produces about half of her total milk production in a 30-day lactation period in the first 120 days. To hold up under the stress of calving and heavy production, the cow must be in good body condition when she calves.

A dairy cow produces about half of her total milk production in a 30-day lactation period in the first 120 days. To hold up under the stress of calving and heavy production, the cow must be in good body condition when she calves.

A dairy cow produces about half of her total milk production in a 30-day lactation period in the first 120 days. To hold up under the stress of calving and heavy production, the cow must be in good body condition when she calves.

A dairy cow produces about half of her total milk production in a 30-day lactation period in the first 120 days. To hold up under the stress of calving and heavy production, the cow must be in good body condition when she calves.

A dairy cow produces about half of her total milk production in a 30-day lactation period in the first 120 days. To hold up under the stress of calving and heavy production, the cow must be in good body condition when she calves.

A dairy cow produces about half of her total milk production in a 30-day lactation period in the first 120 days. To hold up under the stress of calving and heavy production, the cow must be in good body condition when she calves.

# Art exhibit at MSU

An exhibit of "Fifty Prints by William H. Campbell"

will be on display through Feb. 27.

An exhibit of "Fifty Prints by William H. Campbell" will be on display through Feb. 27. The exhibit will be on display through Feb. 27.

An exhibit of "Fifty Prints by William H. Campbell" will be on display through Feb. 27. The exhibit will be on display through Feb. 27.

An exhibit of "Fifty Prints by William H. Campbell" will be on display through Feb. 27. The exhibit will be on display through Feb. 27.

An exhibit of "Fifty Prints by William H. Campbell" will be on display through Feb. 27. The exhibit will be on display through Feb. 27.

An exhibit of "Fifty Prints by William H. Campbell" will be on display through Feb. 27. The exhibit will be on display through Feb. 27.

An exhibit of "Fifty Prints by William H. Campbell" will be on display through Feb. 27. The exhibit will be on display through Feb. 27.

An exhibit of "Fifty Prints by William H. Campbell" will be on display through Feb. 27. The exhibit will be on display through Feb. 27.

An exhibit of "Fifty Prints by William H. Campbell" will be on display through Feb. 27. The exhibit will be on display through Feb. 27.

An exhibit of "Fifty Prints by William H. Campbell" will be on display through Feb. 27. The exhibit will be on display through Feb. 27.

An exhibit of "Fifty Prints by William H. Campbell" will be on display through Feb. 27. The exhibit will be on display through Feb. 27.

An exhibit of "Fifty Prints by William H. Campbell" will be on display through Feb. 27. The exhibit will be on display through Feb. 27.

An exhibit of "Fifty Prints by William H. Campbell" will be on display through Feb. 27. The exhibit will be on display through Feb. 27.

# Banking service is always in harmony with times and conditions

helps our customers to stay tuned in on personal progress.

Part of our job is giving you the benefits of our professional contacts with the financial cadence from day to day.

DEPOSIT BANK OF CARLISLE, KY. ESTABLISHED 1856

Phone: 228-2205

MEMBER FEDERAL RESERVE SYSTEM

MEMBER FEDERAL DEPOSIT INSURANCE CORPORATION

# IRS urges wage earners to adjust Form W-4

The IRS is mailing to all employees a new Withholding Exemption Certificate (Form W-4) according to the recent changes in the tax law.

The changes in withholding are: (1) Claim the new "dependent" exemption, which allows you to deduct the cost of a dependent's education from your income.

(2) Claim the new "dependent" exemption, which allows you to deduct the cost of a dependent's education from your income.

(3) Claim the new "dependent" exemption, which allows you to deduct the cost of a dependent's education from your income.

(4) Claim the new "dependent" exemption, which allows you to deduct the cost of a dependent's education from your income.

(5) Claim the new "dependent" exemption, which allows you to deduct the cost of a dependent's education from your income.

(6) Claim the new "dependent" exemption, which allows you to deduct the cost of a dependent's education from your income.

(7) Claim the new "dependent" exemption, which allows you to deduct the cost of a dependent's education from your income.

(8) Claim the new "dependent" exemption, which allows you to deduct the cost of a dependent's education from your income.

(9) Claim the new "dependent" exemption, which allows you to deduct the cost of a dependent's education from your income.

(10) Claim the new "dependent" exemption, which allows you to deduct the cost of a dependent's education from your income.

(11) Claim the new "dependent" exemption, which allows you to deduct the cost of a dependent's education from your income.

(12) Claim the new "dependent" exemption, which allows you to deduct the cost of a dependent's education from your income.

(13) Claim the new "dependent" exemption, which allows you to deduct the cost of a dependent's education from your income.

# Clay No. 1 Tobacco Warehouse

845 Anglin Avenue, Lexington, Kentucky

1ST SALE AFTER HOLIDAYS BEGAN JANUARY 4th, 1972.

Call Now - Collect 252-7755

Warehouse located directly behind Clay Wachs stockyards

Owners: Fred B. Wachs, Jr. 266-6654; Alvin Cummins 278-5900

Managers: James B. Kerns 252-7755; Bert Gikison 266-7108

Managers: James B. Kerns 252-7755; Bert Gikison 266-7108

Managers: James B. Kerns 252-7755; Bert Gikison 266-7108

Managers: James B. Kerns 252-7755; Bert Gikison 266-7108

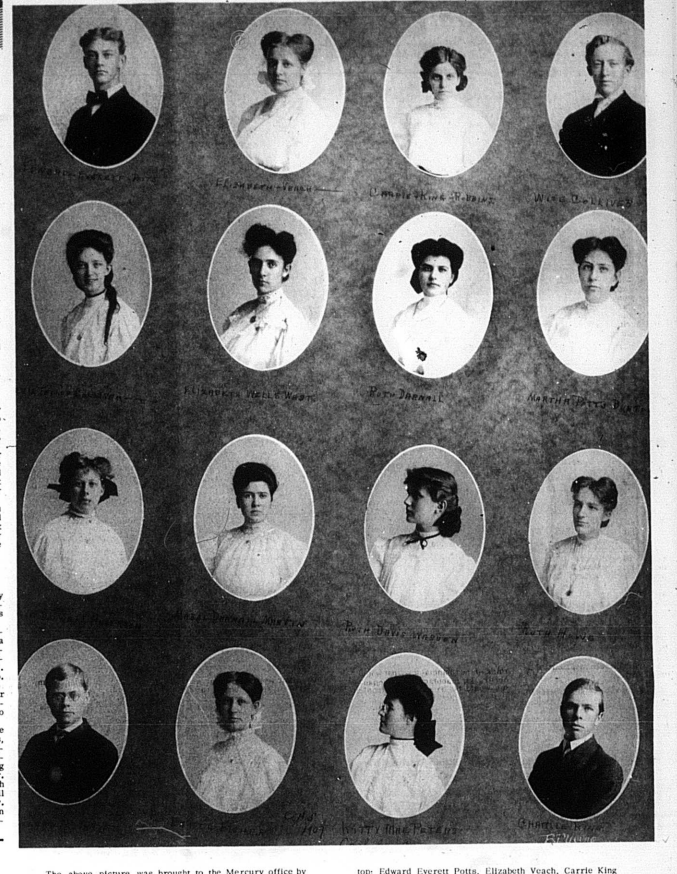
Managers: James B. Kerns 252-7755; Bert Gikison 266-7108

Managers: James B. Kerns 252-7755; Bert Gikison 266-7108

Managers: James B. Kerns 252-7755; Bert Gikison 266-7108

Managers: James B. Kerns 252-7755; Bert Gikison 266-7108

Managers: James B. Kerns 252-7755; Bert Gikison 266-7108



The above picture was brought to the Mercury office by William H. Campbell, meat cutter at Coatsworth's K&M, Carlisle, who works in Lexington. The exhibit will be on display through Feb. 27.

top: Edward Everett Potts, Elizabeth Veach, Carrie Kirk Robbins, Waco Gilliver, Lizzy Taylor Gilliver, Elizabeth Wells Waco, Ruth Darrall, Martha Potts Burton, Maggie Donnell Anderson, Mabel Darrall Martin, Ruth Davis Wasson, Ruth Howe, Howard McIntire, Ethel Fisher, Kitty Mae Peters, Charlie Kirk, all of the Carlisle High School class of 1907. Photos by R.J. Young.