

Parks, Mental Health progress feature 6-city bus-stop tour

By Judi Ledford
State News Bureau

FRANKFORT, Ky.—Gov. Louis B. Nunn Friday (10-23) made a series of announcements and dedications during a day-long bus-stop tour through six central and south-central Kentucky cities.

On his first stop, at Harrodsburg, he announced plans for expansion of Old Fort Harrod State Park to provide more scenic surroundings and more adequate parking for the facility.

The park is a major tourist attraction in the summer when it presents an annual drama, "The Legend of Daniel Boone." He also announced the role the park will play in the commemorative bicentennial celebration in 1974.

At Harrodsburg and Harrodsburg he announced plans for development of a new state park at Herrington Lake. The park will be located at the rear of the Kentucky State Hospital trust and will cover portions of Boyle and Mercer counties.

The governor said the development will be known as Bicentennial State Park. He announced plans for an extensive camping facility to provide overnight accommodations for tourists visiting such Central Kentucky attractions as Old Fort Harrod, Constitution Square in Danville and My Old Kentucky Home in Bardonia.

While in Danville, Governor Nunn dedicated a primary education facility at Kentucky School for the Deaf. The building contains dormitory space, classrooms, house parent quarters and a dining area.

He also announced a \$181,000 project already is underway to convert the now unsafe boiler heating the facility into safe condition.

In addition, he announced a \$1.55 million physical training facility, including a gymnasium, swimming pool and physical education equipment, will be constructed on the campus. It will be similar to one at Kentucky School for the Blind at Louisville, he said.

The governor then journeyed to Somerset where he opened the 2.6 mile Somerset By-pass extending from Ky. 80 on the east to US 27 on the west. The four-lane highway will connect with the Cumberland Parkway, now under construction, which will extend from Somerset to Bowling Green.

At the dedication of the state's Comprehensive Training Center, the governor termed the event "the dawning of a new era in the treatment of mentally retarded Kentuckians." The \$13.5 million facility two miles south of Somerset will house 44 mentally retarded children. They will be trained in academic, social and survival skills so they may return to their home communities and be self-sustaining and productive citizens.

The center will largely replace Frankfort State Hospital and School as a treatment facility. The Frankfort center will remain open as a reception and diagnostic center.

At noon, the governor was host at a luncheon honoring the registered voters of Pulaski County's Davis precinct, who gave him a 120-0 edge in the 1967 gubernatorial election.

At Stinking Valley Church he announced that the state Parks Department will assume responsibility for maintaining Zollioffer Park Confederate Cemetery near Nancy.

At Jamestown, Governor Nunn discussed a \$11 million construction program underway at Lake Cumberland State Park. The program includes a multi-purpose meeting and recreation building, 10 low-rent vacation cottages,

game courts, a creative playground, miniature golf courses and picnic facilities.

He then journeyed to Columbia where he participated in groundbreaking ceremonies for a new State Police barracks near the Cumberland Parkway interchange.

The new post, slated to be completed late next year, will cost \$136,000.

On his Brownsville stop, the governor announced old state Parks Department is negotiating a lease with the Louisville District of the U. S. Army Corps of Engineers for a new state park site on Mink Lake.

The planned park will feature camping facilities, a picnic area and a beach and bathroom.

Obituaries

NOEL GAUNCE
Noel Gaunce, 73, 631 Wichita Drive, Lexington, died Tuesday, Oct. 19, 1971 at Central Baptist Hospital.

Retired cashier of Jimmy Butts Car Wash, he was born in Nicholas County, the son of the late Stonewall and Maggie Bell Gaunce. He served in the army during World War I, was a member of the Carlisle Methodist Church, a 50-year member of the Grand Lodge No. 50 F&AM at Headquarters, a 50-year member of the American Legion Man of War quarters, and a 50-year member of the American Legion, Man of War Post.

He is survived by his wife Mrs. Allie Smith Gaunce; one son Carl Gaunce, Winchester; one daughter Mrs. Madge G. Morris, Lexington; five grandchildren, Bradley Morris, Lexington; Jerry Gaunce, Carlisle S. Gaunce Jr., Millard D. Gaunce, Mrs. Carlean Galloway all of Winchester.

Services were held Thursday at Kerr Brothers, Lexington, Rev. Ralph County officiated. Burial in the Carlisle Cemetery.

REYNOLDS MC DONALD
Reynolds C. McDonald, 47, Carlisle, died Tuesday, Oct. 19, 1971 at the Nicholas County Hospital after an illness of several weeks.

He is survived by his wife, Mrs. Phyllis McNeil McDonald; his mother, Mrs. Elizabeth McDonald, Headquarters, one daughter, Mrs. Carol Whitner, Ohio, one son, Kenneth McDonald, at home; one sister, Mrs. Hampton Faulconer, Ft. Pierce, Fla.; three brothers, Fred and Strander McDonald, Nicholas County and William McDonald, Cincinnati; and three grandsons.

Services were held Thursday at the Mathers-Shearer Chapel, conducted by Rev. H. Dallas Suggs. Burial in the Carlisle Cemetery.

MRS. HAROLD SEALS
Mrs. Mary Hester Mitchell Seals, 44, wife of Harold Seals, died Wednesday, Oct. 20, 1971, at her home after a long illness.

She was a native of Nicholas County and a member of the Christian Church.

Besides her husband, she is survived by her mother, Mrs. Christine Mitchell, Carlisle; one sister, Mrs. Roy Puckett, Paris; three nieces, Mrs. Cella Sexton, Mayfield, Mrs. Don Smart and Mrs. Patsy Gilvin, Carlisle; and two nephews, Alvin and Danny Fackett, both of Paris.

Services were held Friday at the Mathers-Shearer Chapel, conducted by Rev. Harold Rice, Burial in the Carlisle Cemetery. Pallbearers: William E. Medley Jr., Glenn Sexton, Earl Medley Jr., Wayne Wilcox, Frankie Hughes and Robert Moore.

MRS. GEORGE MCKENZIE
Mrs. Mildred Eliza McKenzie, 66, a retired registered nurse who resided at the Christian

Church Home in Louisville, died Saturday, Oct. 23, 1971 at the Louisville Methodist Hospital.

A native of Carlisle, she was the widow of George McKenzie and was the daughter of the late Clay and Minnie Campbell Henry. She had been a registered nurse for 43 years having been a graduate of the old St. Joseph Hospital School of Nursing.

Survivors include four sisters, Mrs. W. Brooks Morgan, Louisville; Mrs. Cecil Sanders and Mrs. Ella Dixon, Lexington, and Mrs. James Gillispie, Paris; three stepdaughters, Miss Orpha McKenzie and Miss Evelyn McKenzie, both of Carlisle; and Mrs. Mary Husk, Honolulu, Hawaii, and stepson, James McKenzie, California.

Funeral services were conducted at the Hilton-Larson Funeral Home on Tuesday, with Dr. Elmer Bartfield, pastor of the First Presbyterian Church, Paris officiating. Burial in the Carlisle Cemetery.

Casket bearers: W. B. Blount, Clay Morgan, Thomas Dixon, Russell Sharp Jr., Eddie Wells, Criffin Anderson, Donald Dixon and Lynam Hunt III.

MRS. BOBBIE BURNS
Mrs. Inez House Burns, 90, 605 January Court, Paris, died at the Bourbon County Hospital Saturday, Oct. 23, 1971.

A native of Nicholas County, she was the widow of Robbie Burns, a member of the First Baptist Church.

Survivors include five daughters, Mrs. Lily Boswell, Mrs. Beesse Downing, Mrs. Mary J. Burns and Mrs. Wesley Humphries, all of Paris; Mrs. Wilson Stephens, Lexington; seven grandchildren, and 10 great-grandchildren.

Funeral services were conducted at the Davis Funeral Chapel, Paris, Monday by the Rev. Robert Wallace. Burial in the Paris Cemetery.

Casket bearers were Harry Boling, Clifton Humphries, Graham Ewalt, William Ramsey, George Hunt and Miller Kiser.

About

Continued from page one

In whole or in part, are the social security beneficiaries. As of January, they numbered 1,010.

Second in line, in point of numbers, are public employees. Approximately 270 men and women in the area are on Federal, state or local payrolls according to the latest figures.

They also represent a sizeable portion of the people deriving income from government sources. The report shows that 5.5 million of them, nationally, are getting compensation or pension checks from the Federal government.

Of those in Nicholas County, an estimated 140 living veterans, or survivors of former veterans, are receiving such checks.

In addition, income is going to local residents through various other public agencies, including people on the retirement rolls of Federal, state and local governments, those who are now in military service and those who are getting unemployment insurance or other benefits.

Even though, as the Tax Foundation points out, some persons may be getting income under this program, the validity of the figures would not be affected materially, it states.

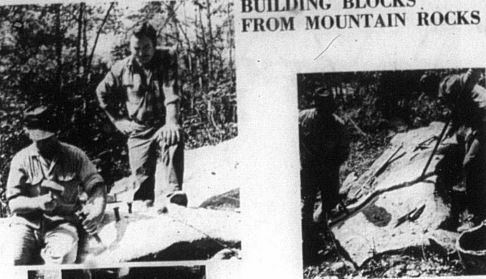
Midget grid team has 3-1 record

The Jayce sponsored Nicholas County Blue Aces midget football team has two games scheduled this week. They will meet the Valley Park Packers tonight, Oct. 28, at 7:00 on the Nicholas County High School field.

Sunday, Oct. 31, at 2:30 p.m. the Blue Aces will take on the Idle Hour Warriors in Lexington on the Idle Hour field (off Richmond Road, turn left at Frisch's). The local team is currently enjoying one of its most successful seasons ever, being 3-1 at this time.

Drinking cups and eating utensils made of ivory from the tusks of Arctic narwhals were used at the French court until 1789. The tusks, believed to be unicorn horns, were thought to protect the user from poison.

BUILDING BLOCKS FROM MOUNTAIN ROCKS



Stonemasonry, a pioneer skill almost lost and seldom practiced today, is being preserved through a job program at Kingdom Come State Park. The park is employing local stonemasons to build walks, overlooks and retaining walls in the park. At left above, Hance Harcomb watches as Robert Hensley drives rock points to split a slab of mountain sandstone. At right they pry apart the freshly split sections. The blocks then are carefully "faced" by Alfred Shepherd, left, before being laid. The work is slow, hard and tedious but the results are ruggedly beautiful like the retaining wall below.

Compare

NEALE'S KY

SQUARE DEAL GROCERY FOOD STORES

U. S. Choice

Chuck Roast

lb. 59¢

Chuck Steaks	lb. 69¢
Shoulder Roast	lb. 73¢
Ground Beef	2 lbs. \$1.39
Webbers Sausage	2 lb. bag \$1.39 lb. bag 75¢

Pristeen Mist	4 oz.	\$1.29	Arid Extra dry Deodorant	6 oz.	99¢
Nabisco Chips Ahoy	14 1/2 oz.	49¢	Northern Towels	each	29¢
Chocolate Chips			Northern Napkins	160 ct.	2/49¢
Pillsbury Cinnamon Rolls		37¢	Bush Cut	2 1/2 size	
Pillsbury Extra light Biscuits	6/59¢		Green Beans	2/49¢	
Pillsbury Buttermilk Biscuits	6/59¢		Joan of Arc	2/35¢	
Clorox Bleach	1/2 gallon	39¢	Kidney Beans		
Joan of Arc Corn	303 size	2/49¢			
golden whole kernel, golden cream					
Joan of Arc Peas medium	303	2/45¢			
Schick Injector Razor Blades	7	\$1.09			
Hi-C Fruit Drinks	46 oz.	3/51			
Gravy Train Dog Food	25 lb.	\$3.39			
Listerine	14 oz.	99¢			
Zesta Crackers	lb.	39¢			
Comet Cleanser	21 oz.	27¢			
Downy	17 oz.	39¢			
Biz pre-soak	reg. size	39¢			

Fresh Kale

10 oz. 29¢
cello pkg.

Carrots 2 lb. pkg. 25¢
Winesap Apples new crop 4 lb. bag 49¢
Kraut Cabbage lb. 5¢

LET US FILL YOUR NEXT PRESCRIPTION

YOUR DRUG STORE

REXALL DRUG STORE

Welcome

REXALL BBUS

master charge

INTERSTATE CARD

Carlisle Drug Co.

THE REXALL STORE

CARLISLE, KY. Prescription Dept Ph: 289-2528

28 OCT 28