

## Gov. Nunn's Order For Guards Termed 'Mission Of Protection'

FRANKFORT, Ky.—Gov. Louie B. Nunn described his order sending Kentucky State Police and National Guardsmen to the University of Kentucky campus in Lexington to put down student disorders as a "mission of protection."

The disorders started May 5 with demonstrations against U.S. involvement in Cambodia, and the fatal shooting of students at Ohio's Kent State University. They culminated in the burning of the old ROTC building.

The governor on May 6 imposed a 7 p.m. to 6:30 a.m. UK campus curfew.

His order said in part: "The Kentucky State Police and an ade-

quate number of National Guardsmen with mounted bayonets and live ammunition are being moved onto the campus to protect the students and university property.

"These officers are under orders to use such force as is necessary to perform their mission of protection, including but not limited to deterring and deterring to do them does so at his own peril. Please comply for your own safety and the safety of all others."

The key to his action, the governor said, lay in the phrase "mission of protection." It was for the protection of all, he said, for students, for their families who sacrificed to send them to college, and for innocent bystanders.

## SPACE and AERONAUTICS

**SKYLAB**

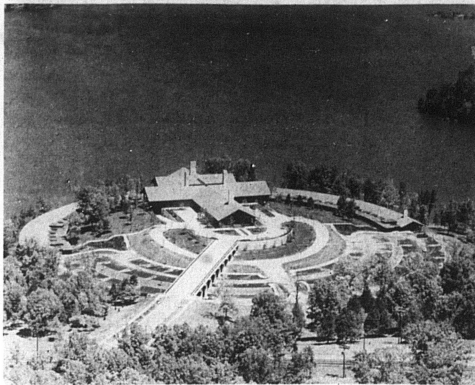
WASHINGTON—For the last few years, NASA has talked about a program called Apollo applications. That name had clear meaning within the aerospace industry, but didn't make much sense to John Q. Public.

But that terminology is out of the window. What was called Apollo applications is now "Skylab" and this clearly means what the name implies — a laboratory in the sky.

The U.S. is planning a 16,000-cubic-foot man-made laboratory orbiting the Earth. Its job is to gather useful data in such Earth-bound fields as oceanography, water management, agriculture, forestry, geography and ecology, and to learn if man can make long duration space flights. Whatever else the composition of the crew, there will be a physician and an astronomer aboard each flight.

One of the most interesting aspects of Skylab is that it will be housed in a modified third stage of the giant Saturn V launch vehicle, the rocket used by the U.S. to send men to the Moon. But in this case, instead of the third stage ariving the final thrust for a flight to the Moon it will go into orbit

## Barkley Lodge Concept Created By Edward Stone



## Food Aid

More needy families in Kentucky are benefiting from U.S. Department of Agriculture food assistance programs, with latest reports showing that 261,461 persons are getting help in March.

The significant increase in participation, officials of USDA's Food and Nutrition Service report, has been due largely to the inauguration of changes in the food stamp program. The changes included reduced purchase requirements and increased bonus allotments for many eligible families.

During March, a total of 193,215 persons in 63 Kentucky counties received nearly \$4.8 million worth of USDA food stamp coupons.

The FNS Southeast regional office also reports that another 68,246 persons in 56 counties received around 2.2 million pounds of USDA donated foods through the family food distribution program during March.

The foods had a retail value of over \$887,000 and included dairy products, canned and dried fruits and vegetables, canned meat or poultry, grain and cereal products, as well as other items such as peanut butter and scrambled egg mix.

There were 831 persons in Nicholas County receiving donated foods for March.

visitor until his superbly balanced functional design made him realize that this is modern beauty in its most pleasing expression.

Money and talent have been

poored lavishly into Barkley Lodge. The entire park cost around \$13 million and of this, some \$1-1/2 million have gone into the lodge. —That works out


to around \$45,000 per guest unit. The whole thing is an architectural jewel that cannot easily be described. It has to be seen to be appreciated.

# NEAL'S SKY

SQUARE DEAL GROCERY FOOD STORES

## Chuck Roast

U. S. Choice lb. 49¢



- Chuck Steaks lb. 63¢
- Shoulder Roast lb. 59¢
- Ground Beef lb. 69¢
- Fields Bacon lb. 69¢

## Edwards Wieners 12 oz. pkg. 49¢

- KITCHEN FRESH Potatoe Chips 39¢ twin pak
- PILLSBURY buttermilk Biscuits 6/59¢
- Dessert Topping
- Cool Whip Large 53¢
- CAMPBELLS Tomato Soup 10¢
- KLEENEX Double Dip Facial Tissues 33¢ 280 ct.
- MIOLO 5 lb. Margarine \$1
- KLEENEX Jumbo
- Pork & Beans 4/59¢
- DUNCAN HINES Cake Mixes 3/\$1 all flavors
- Nabisco Cookies 39¢
- Vanilla Wafers 12 oz.
- Fig Newtons 16 oz.
- Waffle Creams 10 oz.
- KY. FOOD STORES Hamburger Buns 29¢
- JIF 12 oz. Peanut Butter 39¢
- VAN CAMPS #2 White Hominy 4/59¢
- LIPTON 3 oz. Jar Instant Tea 99¢
- IDAHO 10 lb. bag Potatoes 89¢
- cello pkg. Carrots 2/19¢
- Oxydol giant 59¢



STOKLEY Golden Cream, WK Corn #303 2/35¢

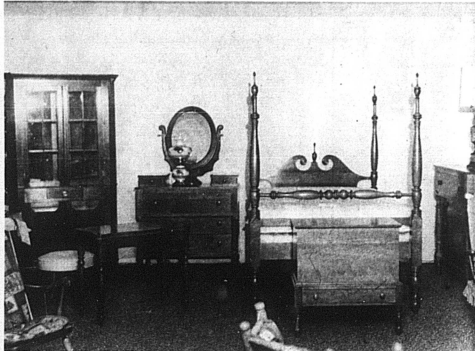
- BAMA Strawberry Preserves 18 oz. 49¢
- DEBBIE 32 oz. Liquid Detergent 39¢
- NU-MAID 1b. Margarine 43¢
- Bufferin 100's \$1.19
- STOKLEY 14 oz. Catsup 2/35¢
- 9 oz. Awake 35¢
- STOKLEY #303 Apple Sauce 5/89¢
- SHASTA 12 Oz. 6 pak Root Beer 49¢
- MORTON Cream Pies 3/\$1
- Choc., Lemon, Banana

## Towels 33¢



Yellow Corn 6 ears for 49¢

## See The Reproductions in Solid Cherry



Buy a Starter Piece and Build a Household with Pride and Joy.

"Buying Solid Cherry is like buying a



See the Complete Selection At

# GARRETT'S FURNITURE

ALWAYS FIRST QUALITY