

Obituaries

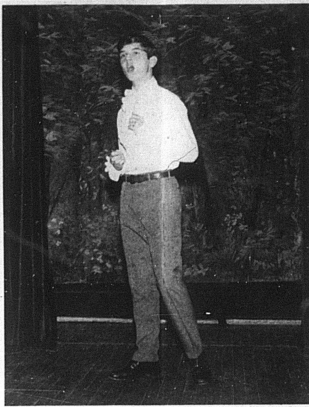
JOHN W. BOWEN
John W. Bowen, 83, 128 East 10th Street, Paris, died at the Bourbon County Hospital, April 10, 1970.

A native of Nicholas County, he was a son of the late D.F. and Ellen Alexander Bowen and a retired carpenter.
Survivors are his wife, Mrs. Ada Roberts Bowen; one daughter, Mrs. John Hines; two sons, Raymond Bowen and Gene C. Bowen, all of Paris and three grandchildren.
Funeral services were conducted Monday at the Davis Funeral Chapel by Dr. C. Neff White. Burial will be in the Paris Cemetery.
He was a member of the Stoney Creek Christian Church.
Survivors are his wife, Mrs.

Casket bearers were Calvin Tip-ton, Oney Soard, Milford Soard, Boyd Montgomery, Benny Montgomery and J.B. Moore.

NATHAN C. SHAW
Nathan C. Shaw, 74, 720 Vine Street, Paris, died Thursday, April 9, 1970.

He was a native of Barterville, a son of the late Joseph and Torrie Ann Shaw, and a veteran of World War I. He was a member of the American Legion, educated in the Nicholas County Schools and a member of the Methodist Church.
Mrs. Shaw was employed at the Blue Grass Ordnance Depot on the Railroad on the post. He had been in declining health for the past ten years.
Survivors are his wife, Mrs.



"TO BE, OR NOT TO BE"--Hamlet's Soliloquy was given by Hugh Wilson at the Nicholas County 4-H Talent Show. Hugh's dramatic reading was chosen one of three winning acts from the solo and small group talent divisions. Hugh is the son of Mr. and Mrs. William Wilson. He is a member of the Go-Getters 4-H Club under the leadership of Mrs. Margaret Simon. --Photo by Billy Gudgill

Emma W. Shaw, one son, Nathan C. Shaw Jr., Rockville, Md.; two half sisters, Miss Hazel Ramey, Nicholas County and Mrs. Myrtle Murrell, Nicholas County; one grandson and one granddaughter.
Services were conducted Saturday morning at the Henson-Turner Funeral Home by Dr. Nevil C. White. Burial in the Carlisle Cemetery.
Casket bearers were Wesley Humphreys, Charles Irvine, Herbert Campbell, Tom Tobin, Eugene Boyle and Billy Isham.

NAMED CHAIRMAN--Mrs. Jimmy Conrad has been named chairman of Credentials for the Kentucky Education Association of Classroom Teachers, Louisville. At present she is serving on the state Elections Committee and District Chairman of Central Elections Committee and District Chairman of Central Kentucky's Department of Classroom Teachers. Previous positions have been vice-chairman and chairman-elect of Central Kentucky-DCT, served on the state Credentials, represented Kentucky in Southeast Regional Conference in Louisville and Charleston, S.C., and a delegate to the National Education Association in Dallas, Texas. Mrs. Conrad has held various offices on the local level. She is a graduate of Nicholas County High, Morehead State University, Brown's Preparatory School, and Winchester Beauty College. She is employed by the Nicholas County Board of Education and teaches science in one of the elementary schools.

Airman Cain's Unit Cited For Service

NORTH CHARLESTON, S.C.--Airman Kathleen Cain, daughter of Mr. and Mrs. Richard Cain, Route 3, Carlisle, is a member of a unit that has earned the U.S. Air Force Outstanding Unit Award. The 457th Military Airlift Wing at Charleston AFB, S.C., was cited for meritorious service from July 1968 to July 1969 for its support of military operations. This marks the fourth time in five years the wing has been honored as an outstanding unit.
Airman Cain, a transportation specialist in the 457th, will wear the distinctive service ribbon to mark her affiliation with the unit. The organization is a part of the Military Airlift Command which provides global airlift for

FEATURING . . .

Russell Stover CANDIES

ASSORTED CHOCOLATES

Delicious Russell Stover Candies are famous everywhere for their superb quality and freshness.

Hopkins Drug Co.

Your Prescription Our Specialty

LOOSEN UP your timing...

When you use AAtrex 60W herbicide you're free to work your weed killer into your total corn program to suit yourself.
It's your choice--apply it before planting, during planting, or after planting.
AAtrex is not only the most effective weed killer in corn, it's also the one that allows you the most freedom in timing the application. Call us today for all the details of applying AAtrex.



SOUTHERN STATES
Carlisle Cooperative
Phone: 289-2161

4-PLY NYLON CORD WHITEWALL GENERAL JET ONLY

* Famous dual tread design for traction
* Deep Duragum tread rubber for long mileage

\$14.69

plus \$1.78 Fed. Tax
6.50x13 Larger sizes cost extra.

WHEEL ALIGNMENT ADDS SAFE MILES

Specialists correct caster, camber, toe-in, toe-out to your car manufacturer's specifications, and safety-check and adjust your steering.

\$7.50

STEER WITH SAFETY!
Charlie Mann Auto Repair
Carlisle, Kentucky

NEAL'S KEY

SQUARE DEAL GROCERY FOOD STORES

U. S. CHOICE

Chuck Roast 59¢

Shoulder Roasts lb. 69¢
Ground Beef 2 lbs. \$1.29
Fields Bacon lb. 69¢
Spare Ribs lb. 69¢
Chuck Steaks lb. 69¢

PILLSBURY Cinnamon Rolls 29¢
BALLARD Biscuits 6/5¢
Buttermilk, sweet milk
NABISCO 15 oz. bags
Cookies 2/89¢
choc. fudge, ass. fudge, vanilla
DEL MONTE #24
Fruit Cocktail 35¢
Catsup 29¢
DEL MONTE 46 oz. Tomato Juice 29¢
KLEENEX BOUTIQUE Facial Tissues 4/51
3¢ off 125 ct.
Crisco Oil 48 oz. 99¢
Ivory Soap 5¢ personal

FRUIT DRINKS
HI-C 25¢
46 oz. orange, grape, vanilla

DEBBIE LIQUID qt. 29¢
MIRACLE WHIP qt. 48¢
SALAD DRESSING NORTHERN 4 roll 3/51
Tissue reg. size (Reg. 49¢) 39¢
MR. G cr. cut 2 lbs. French Fries 29¢
Cookies 3/51
VAN CAMP #2 Pork & Beans 5/89¢
Argo Peas #303 4/49¢
STOKELY #303 Cherries 4/51
Ajax Detergent 49¢ giant

FRUIT DRINKS
Bread 2/43¢
20 oz. loaf

FRUIT DRINKS
Cabbage 1 lb. 8¢
NEW GREEN
RED OR GOLDEN 3 lb. bag Apples 39¢
RUSSETT 20 lb. bag Potatoes 79¢

KY. FOOD STORES

Ice Cream 59¢
1 gallon