

Nicholas Man Charged With Murder in Bath



KENTUCKY HIGH SCHOOL PRESS ASSOCIATION with Gov. Louie Nunn are from left: Brad Wright, vice president, Henry Clay High School, Lexington; Rebecca Jones, president, Bourbon County High, and Ann Barber, secretary, Nicholas County High School, Carlisle. The officers of KHPSPA were to Frankfort, April 15.

Armed Forces Open House May 17 & 18

WRIGHT-PATTERSON AIR FORCE BASE, Ohio—Not all of the activity will be in the air during the Armed Forces Weekend Open House at Wright-Patterson Air Force Base May 17 and 18. A wide variety of most exhibits will also help to tell visitors the story of the "Armed Forces for All."

Computers have come to play an important role in the Department of Defense. Visitors will see some of the modern capabilities of the mechanical brains in an exhibit prepared by the Advanced Logistics Systems Center. This unit is charged with developing a 21st Century logistics support system. The use of computers in military supply, maintenance and administration will be illustrated in non-technical terms.

Visitors will also be able to see and visit with some of the men from MARS, MILB, an acronym for Military Atlantic Radio System, is a world-wide communications network which relays messages between servicemen and their families as well as providing additional communications capabilities for the armed forces.

Persons visiting the MARS booth will be able to send messages to servicemen anywhere within the continental United States free of charge.

The Civil Air Patrol (CAP), the official Air Force auxiliary will have two main exhibits. The first will depict the mission of the CAP and its history. In addition, youngsters may have their picture taken while sitting in the cockpit of a 1/2 size F-103 jet airplane. The recruiting services of all the armed forces will have exhibits available to explain the activities of each armed force.

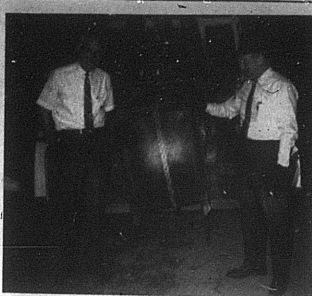
Aeronautical Systems Division (ASD) will exhibit a theme exhibit designed to show the mission of ASD, Four Air Force weapons systems, the C-5A, SR-71, A-7 and F-111, will be

Jury Members Chosen Monday

Denlah Hughes, Circuit Clerk, announced Tuesday the May term of Court Jury lists which were selected Monday.

The grand jury members are: Roger Hamilton, Norman, Joe S. St. Clair, Carolyn Blair, Bill Cash, Roscoe Bule, Francis Earllyne, Lucille Wood, Marion Davis, Della Mae Gray, Marie Dossent, Doris Miller, Eric Hines.

Members of the Petit Jury are: Jimmy Chase, Joan Conroy, Elmer Blanche, Spencer Gausse, Sam Day, Thelma Caswell, S. Watson Smith, Agnes Connelly, Russell Bowles, Millie Soper, James Moon, Rayhonda Small, C. C. Crockett, Dorothy Neal, Allen Buley, Louise Zachary, Gladys Dunson, Eddie Roy Price, H. C. Caswell, Hance Elliott, Mrs. G. G. Bowen, Joe Stevenson, Bernice Whaley, Mrs. Alexander Ramsey, Beroville Allison, Harold McFarlan, Mrs. Ray White, Lloyd E. Evans, Faye Sutton, Sara Womack, Avery Mitchell, Orville O. Gausse.



A heavy safe stolen from Rex & Paul's Service Station of Main Street was recovered on Tuesday, according to Sheriff Emory Clark, who is pictured on the right with Merdon Evans, deputy. The safe which had been blown open and badly damaged was found in a field on the farm of Allie Tapp with its contents, check books, accounts, and other records scattered nearby. The burglars who hauled the safe, but who got no money for their trouble. Fingerprints were found on weapons systems.

Visitors should enter the base through Gates 12 A and 15 A, which are located adjacent to Ohio State Route 644. The exhibits will be open from 10 a.m. until 7 p.m. each day.

Historians often credit a Stone Age dig with the accidental discovery of copper ore as he built his cage in the southern part of the Sinai peninsula. The prehistoric copper and turquoise mines were worked by pharaohs of the Great Pyramid.

Uranium was discovered in 1789 by a German chemist, Martin Klaproth, but remained an obscure element for more than a century.

My Neighbors



"Talk to me, Mom, talk to me, I'm chickening out again."

THE CAPTIVE is capable of getting the message by Armed Forces Weekend exhibits at Wright-Patterson AFB will be the 1-100 Superstar. The 800 mile per hour plane, but one of its static air craft displays on May 17 and 18, is a state-of-the-art, conventional or nuclear engine, plus rockets to a ceiling of 100,000 feet.

Alaska's New Prospectors Drilling For Liquid Gold

Prospectors competing in Alaska's latest hunt for riches wear hard hats and fur-collared rigs. In a series of tests above the Arctic Circle, the north side of the 49th state indicate that huge reserves lie beneath the Arctic's preliminary reports suggest wells may produce one to two million barrels a day by the mid-1970's. The find, 245 miles southeast of Point Barrow, has been described as "one of the largest petroleum accumulations known in the world today."

Discovery of vast Alaskan deposits has long been suspected. The National Geographic Society says, "Travelers reported to Europe 80 years ago. In 1923, President Warren G. Harding set aside 27 million acres near Point Barrow for petroleum exploration."

Geologists found oil in the region near a Naval Petroleum Reserve 4 in 1945. The search started with a large enough to offset the high expense imposed by weather and terrain. Winter winds up to 75 miles an hour lash the broad and rolling expanse of

treeless tundra. Summer temperatures annually increase only about 27 inches of snow, but gales whip it into 20-foot drifts, burying buildings.

Permafrost, a layer of permanently frozen ground, penetrates to fantastic depths.

The summer weather, averaging about 30 degrees F. in July, shows the top feet of tundra into a liquid, wet marsh. Swarms of mosquitoes hum in the 24-hour daylight north of the Arctic Circle.

To harness the oil from the harsh environment, three major petroleum firms will build an 800-mile, 48-inch-diameter pipeline from Prudhoe Bay to the Gulf of Alaska. The \$600-million line scheduled for completion in 1972, will serve West Coast markets.

Huge tankers may carry the Alaska petroleum through the fabled Northwest Passage to eastern consumers. The companies have outfitted a large vessel with an icebreaker bow and other special equipment to try the treacherous route in June or July 1969.

Ice is disastrous.

It promises to be a severe test for the tanker. Summer ice packs near Point Barrow can grade against reinforced hulls, snap propellers, and flood engine rooms.

The Northwest Passage challenged generations of seafarers before Norway's Roald Amundsen mastered the average current and ice jams in 1906 by attempting the 70-foot schooner GCSA from east to west.

American ship odds succeed until 1907. Led by the Canadian icebreaker Labrador, three United States Coast Guard cutters fought from west to east, passing through narrow Bering Strait narrows, Beringia Peninsula, North America's northernmost mainland.

Governor Interested In Choral Group In Frankfort

FRANKFORT GOV. LOUIE H. NUNN, of young people, has shown concern in the efforts of a Frankfort choral group. The group, "Sing Out, Frankfort," a 40-voice group of high school students, is the offspring of a national organization, "Up With People."

As the Governor's guests, representatives of "Sing Out, Frankfort" discuss four possibilities and means of financing the group.

Concerned with carrying "Sing Out's" message across Kentucky, the group Kentucky and such activities as fund-raising, mental health hospitals, and prisons.

The "Up With People" movement, which dramatizes the potential of the world, has brought large groups of high school and college students to Kentucky and the rest of the United States into its ranks.

NEAL'S KY

SQUARE DEAL GROCERY FOOD STORES

Fischers Skinned Hams	
SHANK HALF lb. 49¢	BUTT HALF lb. 55¢
WHOLE lb. 53¢	
Goldcrest Turkeys 7 to 10 lb. average	lb. 39¢
Fields Bologna	lb. 49¢
Pork & Beans 2/39¢	Bread 19¢
Van Camp's Pork & Beans	Margarine 15¢
Ice Cream 59¢	Pot Pies 3/59¢
Charcoal Briquets 10 lb. bag 67¢	Soft-Meats 2 roll pkg. Toilet Tissue 4 pks. \$1.00
Indian River White Seedless Grapefruit 25¢	Nabisco Nilla 12 oz. Vanilla Wafers box 39¢
Pillsbury Cake Mixes 2/69¢	Parmount Sweet Pickles 16 oz. 39¢
Pillsbury Flour 5 lb. bag 59¢	
Sunshine State Frozen Orange Juice 6 pak. \$1.29	

LYRIC Theatre

CARLISLE, KY.

Fri. & Sat., May 9-10

Marlon Brando Richard Boone

The Night of the Following Day

DEAN MARTIN
ELKE SOMMER
NANCY Kwan