

City, County, Legislative, Judicial Elections This Year

This is Kentucky's year for city and county as well as legislative and judicial elections.

The Republican and Democratic primary elections will be on May 27 and the general election on July 4.

The late day for an unopposed Republican to register to vote in one of the primaries depending on whether he is a Republican or Democrat is Saturday, March 23.

While there is no statewide contest for mayor election, the legislative races are of interest to the state-at-large because they determine the makeup of the State's lawmaking body, the Kentucky Legislature for 1970-71.

All of Kentucky's 100 seats in the State House of Representatives are to be filled for two-year terms. Half of the 38 seats in the State Senate those of the even-numbered districts also are to be filled. State Senators are elected for four-year terms. Half of the Senators are holders.

Also to be filled are Circuit Judgeships and the State as well as the seats of Commonwealth Attorneys and District Attorneys.

County judges may file for both Republican and Democrat in the judicial districts for six years, but only one party affiliation is permitted.

County sheriffs, magistrates and coroners may file for both Republican and Democrat in their offices after their terms expire.

The proposed amendments to the State Constitution will be on ballot throughout Kentucky. They will authorize the General Assembly to propose to voters the amendment.

The State Constitution will be on ballot throughout Kentucky. They will authorize the General Assembly to propose to voters the amendment.

The State Constitution will be on ballot throughout Kentucky. They will authorize the General Assembly to propose to voters the amendment.

The State Constitution will be on ballot throughout Kentucky. They will authorize the General Assembly to propose to voters the amendment.

The State Constitution will be on ballot throughout Kentucky. They will authorize the General Assembly to propose to voters the amendment.

The State Constitution will be on ballot throughout Kentucky. They will authorize the General Assembly to propose to voters the amendment.

The State Constitution will be on ballot throughout Kentucky. They will authorize the General Assembly to propose to voters the amendment.

The State Constitution will be on ballot throughout Kentucky. They will authorize the General Assembly to propose to voters the amendment.

tion, the Legislature will not convene until the first Tuesday after the first Monday in March.

Any Kentuckian meeting residence requirements who will be 18 by election day in November may register now to vote in his party's primary. Persons registered other than Republican or Democrat may not vote in either primary. The voter must be a U. S. citizen who by election day will have lived in the state one year, the county six months, and the precinct 60 days.

Registration books are closed 50 days before and five days following a primary or general election. Once a voter is registered, he does not have to re-register unless he moves to another precinct, changes his name by marriage or other legal process, or is removed from the registration books.

Registration throughout Kentucky is in the office of one's county clerk, except in Jefferson County where it is at Commerce Center, Walnut and Amory Place. Some counties occasionally employ additional temporary facilities. Ample public notice is given in each county.

While throughout the state will be open from 7 a. m. to 6 p. m. each time for both the May 27 primary and the July 4 general election. The actual primary opening and closing hours will be set by the Family and Central District Daylight Time depending on the zone the change from standard to daylight time becomes effective the last Sunday in April.

The bride chose for her wedding a white tulle gown with a high collar and long sleeves. The groom wore a white tuxedo with a white bow tie.

The bride chose for her wedding a white tulle gown with a high collar and long sleeves. The groom wore a white tuxedo with a white bow tie.

The bride chose for her wedding a white tulle gown with a high collar and long sleeves. The groom wore a white tuxedo with a white bow tie.

The bride chose for her wedding a white tulle gown with a high collar and long sleeves. The groom wore a white tuxedo with a white bow tie.

The bride chose for her wedding a white tulle gown with a high collar and long sleeves. The groom wore a white tuxedo with a white bow tie.

The bride chose for her wedding a white tulle gown with a high collar and long sleeves. The groom wore a white tuxedo with a white bow tie.

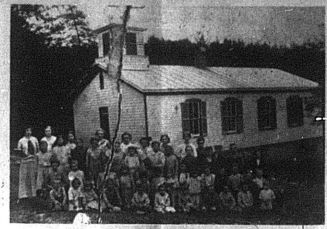
The bride chose for her wedding a white tulle gown with a high collar and long sleeves. The groom wore a white tuxedo with a white bow tie.

The bride chose for her wedding a white tulle gown with a high collar and long sleeves. The groom wore a white tuxedo with a white bow tie.

The bride chose for her wedding a white tulle gown with a high collar and long sleeves. The groom wore a white tuxedo with a white bow tie.

The bride chose for her wedding a white tulle gown with a high collar and long sleeves. The groom wore a white tuxedo with a white bow tie.

The bride chose for her wedding a white tulle gown with a high collar and long sleeves. The groom wore a white tuxedo with a white bow tie.



Mrs. Nina Pryor brought this picture of the one room school at Lower Blue Lick. At one time there were 60 students enrolled. This picture is of the 1913 school year. First row, Roger Sampson, Mildred Shapp, Mary H. Crawford, D. C. Yates, Elizabeth Yates, Viva Lee Ferguson, Lloyd Selby, Willie Workman, Joe Shapp, Lacey Parrish. Second row, Elizabeth Shea, Josephine Yates, Blanche Workman, Hazel Bradley, Howard Maffett, Pearl Ferguson, Gladys Kenner, Lina Ferguson, Adin Campbell, Clifford Parrish, Claude Abner. Third row, Alma Barnett, Emma Lee Swartz, Ina Bell Workman, Irene H. Kenner, Lillie Mae Sney, Bettie Parrish, Kate Shea, Selma Sampson, Robert Crawford. Fourth row, Pearl McCoom (teacher), Ethel Yates, Margaret Kenner, Gloria Bradley, Nina Doran, Opal Abner, Yvonne Tolson, Emma Ferguson, Boyd Argo, Harry Campbell, John Ferguson, Willie Maffett.

was decorated with miniature white roses and white ribbon around each layer, and topped with a bride and groom, white daisies and white wedding bells.

After a wedding trip the couple will reside in Bourbon County.

Home Economics

In having the first three areas of Home Economics there are seven areas studied. These areas are: Food, Child Care, Health, Foods, Clothing, Management and Family Relations.

In the Food and Nutrition area, students study the planning of meals, food selection, food preparation, food service and food management.

In the Child Care area, students study the care of children from birth to adolescence, including health, nutrition, and safety.

In the Health area, students study the human body, health habits, and the prevention of disease.

In the Foods area, students study the selection, preparation, and service of meals for different occasions.

In the Management area, students study the planning and management of a household budget and the use of resources.

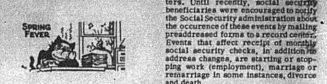
In the Family Relations area, students study the roles of family members and the importance of communication.

The main purpose of the total home-making program is to train young girls to be better homemakers in the future.

By Mrs. Deane Jackson, Washington, D. C.

Make Social Security Reports Direct

Residence of the Carlisle area who are receiving monthly social security checks are reminded by Hugh A. McNary, social security manager in Lexington to report directly to the District Office any change of address or other event affecting continued receipt of their checks.



Appropriate report forms are available at the Lexington Office which is located at 1500 Lexington Road, Room 330, Nabaux Building.

The young soldier is also served by numerous relatives in Nicholas County.

NEAR'S KEY

SQUARE DEAL GROCERY FOOD STORES

Smoked Picnics

Edwards Sausage 2 LB. BAG \$1.25

Stew Beef BONELESS lb. 79¢

Ground Chuck lb. 79¢

Green Beans STOKELY CUT GREEN BEANS 2/29¢

Shredded Kraut 8 oz. 2/25¢

Regular Spinach 8 oz. 2/29¢

Sliced Beets 8 oz. 2/25¢

Potatoes U.S. NO. 1 MAINE 300 size 20 LB. BAG 89¢

Winesap Apples 49¢ 3 lb. bag

Carrots cello pkg. lb. 9¢

All Kinds of Garden Seed. Seed Potatoes - Kennebec Cobblers, Red Pontiac

7 KENTUCKY STATE RESORT PARKS

OPEN YEAR-ROUND Planned recreation programs and special evening entertainment

- CUMBERLAND FALLS KENTUCKY DAM VILLAGES
GENERAL BUTLER LAKE CUMBERLAND
FRANK WILEY NATURAL BRIDGE
CARTER CAVES

SPECIAL PACKAGE RATES 3 days and 2 nights in a luxurious lodge room with full double beds, including parking and all meals from Sunday evening dinner through Tuesday lunch. Extra week \$44.00 Per Person (double occupancy) (includes tax)

Call Central Reservations, Franklin • 303-333-3336

We have it

ATTREX BOW

ATTREX™ brand of atrazine herbicide. It's the same stuff. For season-long control of most annual broadleaf and grassy weeds. ATTREX. We have what you need.

209 Sutton St. Mayville, Ky. 40351

Carlisle Cooperative Your Southern States Cooperative Agency

WORTH TALKING ABOUT

While there is a vital need for creating a wholesome social and economic atmosphere in which all citizens will have an equal opportunity to better themselves, the giving of loans and the care of children are studied.

While in the Health area, students study the human body, health habits, and the prevention of disease.

While in the Foods area, students study the selection, preparation, and service of meals for different occasions.

While in the Management area, students study the planning and management of a household budget and the use of resources.

While in the Family Relations area, students study the roles of family members and the importance of communication.

While in the Child Care area, students study the care of children from birth to adolescence, including health, nutrition, and safety.

While in the Health area, students study the human body, health habits, and the prevention of disease.

While in the Foods area, students study the selection, preparation, and service of meals for different occasions.

While in the Management area, students study the planning and management of a household budget and the use of resources.

While in the Family Relations area, students study the roles of family members and the importance of communication.

While in the Child Care area, students study the care of children from birth to adolescence, including health, nutrition, and safety.

NOTICE

BACK COPIES OF The Carlisle Mercury

OVER THREE MONTHS OLD (if I have them)

50¢ EACH PLUS SALES TAX

Spec 4 Caswell Continued from page 1

months and had been awarded two bronze star medals.

Survivors in addition to his wife and parents include a brother, Kevin Bruce Caswell, at home, his paternal grandmother, Mrs. E. J. Caswell, Sr. of Paris, and his maternal grandparents, Mr. and Mrs. Orville Campbell, also of Paris.

The young soldier is also served by numerous relatives in Nicholas County.

The young soldier is also served by numerous relatives in Nicholas County.

The young soldier is also served by numerous relatives in Nicholas County.

The young soldier is also served by numerous relatives in Nicholas County.

The young soldier is also served by numerous relatives in Nicholas County.

The young soldier is also served by numerous relatives in Nicholas County.

The young soldier is also served by numerous relatives in Nicholas County.

The young soldier is also served by numerous relatives in Nicholas County.

The young soldier is also served by numerous relatives in Nicholas County.

The young soldier is also served by numerous relatives in Nicholas County.

The young soldier is also served by numerous relatives in Nicholas County.

The young soldier is also served by numerous relatives in Nicholas County.