

PRINT OF BACK PAGE IMPROVING THROUGH

SMUDGED PRINT

## ANYWAY YOU CUT IT...



You'll have a bigger slice of extra cash ... with a Savings Account

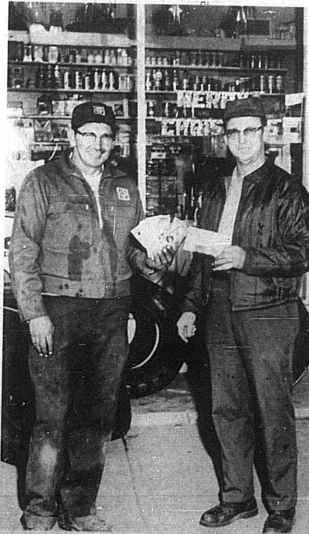
Be sure you get your cut of the money you earn... save for yourself and for your future. Open a Savings Account here. Then, save steadily... put aside a little something every payday. Interest, compounded regularly, helps your money grow faster.

**Nicholas County Building & Savings Association**

**Mr. Allie Vice, Carlisle Route 2**

**WINS \$100 IN**

**Shell Oil States of Union Game at Rex & Paul's Service Station**



Paul Smoot

Mr. Vice

*Service Is Our Business*

## Santa Claus To Be At Jaycee Clubhouse

Santa Claus will be at the Jaycee Clubhouse on Saturdays, Dec. 13 and Dec. 20, from 4 to 6 p.m.

## Seek Applicants For State Troopers

State Public Safety Commissioner William C. Newman today announced an all-out campaign to recruit qualified applicants for two State Police Trooper ranks. The Department has 27 increased police services. Success of the recruiting drive would bring the force to its full strength of 600 officers.

The recruiting effort is aimed at young men in the 21-30 age group who meet the educational, physical and mental requirements for the position of Trooper. Commissioner Newman, himself a Trooper for many years, stated "Police work is an honorable career for the qualified young man. It offers challenge, satisfaction, merit chance of promotion and opportunity to be a vital part of our complex and ever changing society."

State Police Director Colonel C.H. Crum said that Troopers are the most tangible benefits of becoming a Trooper. He said that Troopers can earn from \$50.00 monthly to a maximum of \$74.00 monthly for one year with overtime. There are also fringe benefits which include a group-term life insurance program, good vacation and sick leave provisions, all uniform and equipment furnished and a good retirement program.

Commissioner Newman said that applications and further information may be obtained at any State Police installation throughout the State or by writing to Kentucky State Police Headquarters in Frankfort.

Q-I've been offered a job overseas. If I take it, will I still have to pay U. S. income tax?

A-If your job is with the U. S. Government, you will be subject to U. S. income taxes. However, income from a job with a foreign company or another branch of a U. S. company may be fully or partially exempt from U. S. income taxes.

The IRS has published a booklet covering these situations which is called Tax Guide for U. S. Citizens Abroad. For a free copy, send a post card to your District Director and ask for Publication 54.

Q-I sold some standing timber on my farm to a lumber company. Is this reportable as a capital gain or loss?

A-Such a sale is usually reported as a capital gain or loss. For details on when sale of timber is treated as a capital gain, send a post card to your District Office requesting the Publication 544, Sales and Exchanges of Assets.

The Department of Agriculture also has a publication on this subject, It is Handbook No. 274, "The Timber Owner and his Federal Income Tax," and is available from the Superintendent of Documents, U. S. Government Printing Office, Washington, D. C., 20402.

## Bigger Checks

Continued from page 1  
January 1, 1957, of service-connected causes.  
The new legislation does not affect payments to survivors receiving compensation under laws that preceded the DIC program.  
New DIC rates provide \$107 monthly for the widow of the lower ranking enlisted man compared to a minimum of \$124 at present. Similar increases are provided for eligible widows of other enlisted men. The increase will be effective Dec. 1, the increase will show up first in checks received in and its application is automatic.  
Widows with minor children will get an extra \$20 per month per child dependent, they get one extra now. Forms for making application for child widows automatically. Johnson said, DIC payments have been tied to military pay through a complex formula, carried the complex formula and provided a table of payments based on DIC recipients who are patients in or blind to the point that they need regular aid and attendance of another person, may receive an extra \$50 per month under the law.  
New and dependent of veterans residing in Kentucky may obtain information concerning VA benefits by writing, visiting or telephoning the Louisville, Ky. 40202 Federal Place, VA Regional Office, telephone number is 502-582-5811.



TOO MUCH OF THE DAY—Alex McIntyre Jr., commissioner of the Kentucky Department of Motor Transportation, says too much of each day is spent at his desk, "pushing paperwork." McIntyre, from Hazard, would prefer spending his time out and about. He seems to have the knack of paperwork though, as the efficiency of his department attests.



SILENT FOR THE MOMENT MAJORITY Fifteen-month-old Lore Trindall, daughter of Mr. and Mrs. Larry R. Trindall, of Shelbyville, didn't actually have her big part in the Veterans Day celebration at the Capitol in Frankfort, but then again she's a very small girl—and what photographer can resist snapping a picture of a pretty little girl.

Q-When my father died I inherited his car. He had, if I sell it, will I have to pay income tax on what it brings?

A-Probably not. There would be no Federal income tax to pay on the sales value of the car unless it has increased in value during the time you owned it. There would be a gain to report if you received more for the car when you

sell it than its fair market value at the time of your father's death.

Q-Why is it so important to use the form with the label on it?

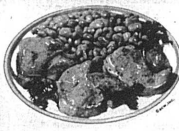
A-Using the form with the pre-addressed label will help avoid errors in processing your return. The label lists your name, address and Social Security number just as it appears on our files. Experience shows that when taxpayers write their own return they make frequent errors. To get to list their Social Security number, enter it accurately. Also, handwritten numbers are hard to read and mistakes occur when a taxpayer writes a "7" that looks like a "9" or vice versa.

"Compare"

# NEAL'S KY

SQUARE DEAL GROCERY FOOD STORES

## PORK CHOPS



Rib Cuts  
lb. **89¢**  
End Cuts lb. 69¢  
Loin Cuts lb. 69¢

*Fine Selection*  
**Christmas Candies.**  
*Nuts, Fruits*

- KEEBLER TOWN HOUSE 12 oz. Crackers 39¢
- PARAMOUNT SWEET 16 oz. Pickles 43¢
- PHILADELPHIA CREAM 4 oz. Cream Cheese 35¢
- DEL MONTE 4 1/2 qt. 4 qt. 2/23¢
- DEL MONTE #303 Cut Green Beans 2/55¢
- DEL MONTE #303 Stewed Tomatoes 2/55¢
- REP GOLD 46 oz. Tomato Juice 29¢

DOMINO 5 lbs. Sugar 39¢  
(with \$5 order)

**Cheer or Gain**  
DETERGENT 57 oz. 46¢ each 29¢

**Velveeta Cheese 99¢**  
2 lb. 46¢



# Lettuce

Large Jumbo heads each **25¢**

Sweet Potatoes 2 - 29¢  
Winesap Apples 4 - 39¢

- Pork Loin Roast 69¢
- KY. FOOD STORES Wieners 59¢
- Beef Liver 59¢
- Spare Ribs 69¢
- SHUCKERS SEEDLESS 20 oz. Blackberry Preserves 49¢
- SHUCKERS 20 oz. Blackberry Jam 49¢
- CHEF BOY-AR-DEE 17 oz. Sausage Pizza 69¢
- CHEF BOY-AR-DEE 15 1/2 oz. Cheese Pizza 59¢
- Pampers Daytime 36 1/2 Top Job Cleaner 40 oz. 46¢ 12 oz. 46¢
- CAMPBELLS Tomato Soup 2/25¢