

Letters to the Editor

Editor: The Mercury. My enclosed check is to ask that you...

Mrs. Charles R. North 3446 Birch Avenue Cincinnati, Ohio 45208 As chairman of the 1969 Easter Seal Campaign...

Editor: The Mercury. I am writing to express my appreciation to the Mercury for the article about my retirement...

Editor: The Mercury. I am writing to express my appreciation to the Mercury for the article about my retirement...

Editor: The Mercury. I am writing to express my appreciation to the Mercury for the article about my retirement...

Editor: The Mercury. I am writing to express my appreciation to the Mercury for the article about my retirement...

Editor: The Mercury. I am writing to express my appreciation to the Mercury for the article about my retirement...

Editor: The Mercury. I am writing to express my appreciation to the Mercury for the article about my retirement...

Editor: The Mercury. I am writing to express my appreciation to the Mercury for the article about my retirement...

'GET THEE BEHIND US!

Editor: The Mercury. My enclosed check is to ask that you...

Mrs. Charles R. North 3446 Birch Avenue Cincinnati, Ohio 45208 As chairman of the 1969 Easter Seal Campaign...

Editor: The Mercury. I am writing to express my appreciation to the Mercury for the article about my retirement...

Editor: The Mercury. I am writing to express my appreciation to the Mercury for the article about my retirement...

Editor: The Mercury. I am writing to express my appreciation to the Mercury for the article about my retirement...

Editor: The Mercury. I am writing to express my appreciation to the Mercury for the article about my retirement...

Editor: The Mercury. I am writing to express my appreciation to the Mercury for the article about my retirement...

Editor: The Mercury. I am writing to express my appreciation to the Mercury for the article about my retirement...

Editor: The Mercury. I am writing to express my appreciation to the Mercury for the article about my retirement...

Twenty & Forty Years Ago

Thursday, April 11, 1949. Miss Elizabeth Lelissa, a former...

A silver tiara and a silver sash were worn by Miss Lelissa...

BORN—To Mr. and Mrs. Joe Beatty Jr. a son, Stephen William on April 11...

DIED—Jack C. (Uncle Jack) Cox, 68, of...

Miss Irene Collins, 19, and her sister, Miss...

It is noted that this man who has probably undergone more wring-doubling...

It is a recent interview, the quiet man said that before he leaves the Senate...

Hold on to your hearts hold, and put a lock on your refrigerators, because there is a "civil rights" movement...

Even though the grape boycotters claim allegiance to a high social purpose, they are in fact supporting an effort to impose compulsory unionism...

MERCURY VALIERS

Thursday, April 17, 1969. The Carlisle Mercury is published...

FOR SHERIFF Nicholas County Emory Clark, Merion Evans, Deputy

FOR MAGISTRATE Second District Paul Truett

FOR MAGISTRATE Fourth District Luther M. Thompson

FOR COUNTY JUDGE Nicholas County Judge Floyd (Timmy) Clark

FOR SHERIFF Nicholas County W. R. (Bill) Doolin, Ernest Sneed, Deputy

FOR MAGISTRATE Second District Ovi R. Day

FOR COUNTY JUDGE Nicholas County "Judge" Spencer Taylor

FOR COUNTY CLERK Nicholas County Eugene Kelly

FOR COUNTY CLERK Nicholas County Albert Booth

SALTWELL

By Mrs. Fred Holler. Mrs. Huel Holler and sons spent the past Sunday with Mr. and Mrs. Lowell Allison...

The Saltwell M.Y.F. enjoyed a social at the church on Friday night.

Mr. and Mrs. Fred Sewell and son of Cincinnati spent Saturday night with Mr. and Mrs. Fred Sewell...

Mr. and Mrs. Bobby Kenney of Lexington spent Saturday night and Sunday with Mrs. Gladys Kenney.

Mr. and Mrs. Fred Hester and son of Cincinnati spent Saturday night with Mr. and Mrs. Fred Hester...

Mr. and Mrs. Bobby Kenney of Lexington is visiting her brother, W. C. Mattson of Alabama...

Miss Teresa Wooley spent several days last week with Mrs. Rhylis Claypool and family of Shawhan...

Mr. and Mrs. Fred Sewell and son of Cincinnati spent Saturday night with Mr. and Mrs. Fred Sewell...

Mr. and Mrs. Bobby Kenney of Lexington is visiting her brother, W. C. Mattson of Alabama...

Miss Teresa Wooley spent several days last week with Mrs. Rhylis Claypool and family of Shawhan...

Political Announcements

FOR SHERIFF Nicholas County Emory Clark, Merion Evans, Deputy

FOR MAGISTRATE Second District Paul Truett

FOR MAGISTRATE Fourth District Luther M. Thompson

FOR COUNTY JUDGE Nicholas County Judge Floyd (Timmy) Clark

FOR SHERIFF Nicholas County W. R. (Bill) Doolin, Ernest Sneed, Deputy

FOR MAGISTRATE Second District Ovi R. Day

FOR COUNTY JUDGE Nicholas County "Judge" Spencer Taylor

FOR COUNTY CLERK Nicholas County Eugene Kelly

FOR COUNTY CLERK Nicholas County Albert Booth

IN SERVICE

U. S. ARMY: WETMAN (LAIN)G Army Private First Class Donald L. Wetman...

U. S. ARMY: WETMAN (LAIN)G Army Private First Class Donald L. Wetman...

U. S. ARMY: WETMAN (LAIN)G Army Private First Class Donald L. Wetman...

U. S. ARMY: WETMAN (LAIN)G Army Private First Class Donald L. Wetman...

U. S. ARMY: WETMAN (LAIN)G Army Private First Class Donald L. Wetman...

U. S. ARMY: WETMAN (LAIN)G Army Private First Class Donald L. Wetman...

U. S. ARMY: WETMAN (LAIN)G Army Private First Class Donald L. Wetman...

U. S. ARMY: WETMAN (LAIN)G Army Private First Class Donald L. Wetman...

U. S. ARMY: WETMAN (LAIN)G Army Private First Class Donald L. Wetman...

U. S. ARMY: WETMAN (LAIN)G Army Private First Class Donald L. Wetman...

Announcing the first car of the '70s at 1960 prices.

FORD MAVERICK \$1995\*

Most new cars look like the other cars. But when the world gets it, it's something really different...

- What kind of gas mileage can I get? A Maverick averages 25 to 30 mpg in city driving...



The place you've got to go to see what's going on—your Ford Dealer

That time, May 1, 1969, is not far away—Inflation which seems to abound in this country, forces us to make an adjustment in subscription rates...

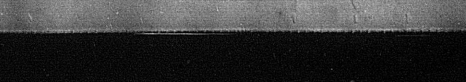
RATES EFFECTIVE MAY 1, 1969

One Year In Kentucky.....\$4.00 plus tax \$4.20 One Year Out-Of-State.....\$5.00

If you wish in the days ahead to subscribe, renew or extend your subscription time at present rates, please do so

One Year In Kentucky.....\$3.50 plus tax \$3.68 One Year Out-Of-State.....\$4.00

READY, FROM THE WORD 'GO!' To bring you news of local interest.



The Carlisle Mercury

ESTABLISHED 1847 PUBLISHED EVERY THURSDAY AT 232 LOCUST STREET SECOND CLASS POSTAGE PAID AT CARLISLE, KY. 40311

WARREN B. FISHER Editor-Publisher (Mrs.) Katherine T. Fisher Associate Editor Mrs. Joseph H. Conley News Editor Mrs. Roy Dotson Advertising Subscriptions Mrs. Charles Peters Secretary

SUBSCRIPTION RATES PER YEAR In Kentucky, one year.....\$3.50 Out-Of-State, one year.....\$4.00

SPECIAL INTERESTS

Public Officials. A list of public officials in the area.

Public Officials. A list of public officials in the area.

Public Officials. A list of public officials in the area.

Public Officials. A list of public officials in the area.

Public Officials. A list of public officials in the area.

Public Officials. A list of public officials in the area.

Public Officials. A list of public officials in the area.

Public Officials. A list of public officials in the area.

Public Officials. A list of public officials in the area.

GRASS ROOTS

Hold on to your hearts hold, and put a lock on your refrigerators, because there is a "civil rights" movement...

Even though the grape boycotters claim allegiance to a high social purpose, they are in fact supporting an effort to impose compulsory unionism...

Even though the grape boycotters claim allegiance to a high social purpose, they are in fact supporting an effort to impose compulsory unionism...

Even though the grape boycotters claim allegiance to a high social purpose, they are in fact supporting an effort to impose compulsory unionism...

GRASS ROOTS

Hold on to your hearts hold, and put a lock on your refrigerators, because there is a "civil rights" movement...

Even though the grape boycotters claim allegiance to a high social purpose, they are in fact supporting an effort to impose compulsory unionism...

Even though the grape boycotters claim allegiance to a high social purpose, they are in fact supporting an effort to impose compulsory unionism...

Even though the grape boycotters claim allegiance to a high social purpose, they are in fact supporting an effort to impose compulsory unionism...

GRASS ROOTS

Hold on to your hearts hold, and put a lock on your refrigerators, because there is a "civil rights" movement...

Even though the grape boycotters claim allegiance to a high social purpose, they are in fact supporting an effort to impose compulsory unionism...

Even though the grape boycotters claim allegiance to a high social purpose, they are in fact supporting an effort to impose compulsory unionism...

Even though the grape boycotters claim allegiance to a high social purpose, they are in fact supporting an effort to impose compulsory unionism...

GRASS ROOTS

Hold on to your hearts hold, and put a lock on your refrigerators, because there is a "civil rights" movement...

Even though the grape boycotters claim allegiance to a high social purpose, they are in fact supporting an effort to impose compulsory unionism...

Even though the grape boycotters claim allegiance to a high social purpose, they are in fact supporting an effort to impose compulsory unionism...

Even though the grape boycotters claim allegiance to a high social purpose, they are in fact supporting an effort to impose compulsory unionism...

GRASS ROOTS

Hold on to your hearts hold, and put a lock on your refrigerators, because there is a "civil rights" movement...

Even though the grape boycotters claim allegiance to a high social purpose, they are in fact supporting an effort to impose compulsory unionism...

Even though the grape boycotters claim allegiance to a high social purpose, they are in fact supporting an effort to impose compulsory unionism...

Even though the grape boycotters claim allegiance to a high social purpose, they are in fact supporting an effort to impose compulsory unionism...