

# Blue Grass Industries Easter Egg Hunt



LOOK AT THE CROWD AND THE HEAVY COATS TOO.



PLENTY OF EASTER BUNNIES HERE.



THEY'RE OFF, AND HUNTING!



MORE CROWD AND WINTER WRAPPINGS.



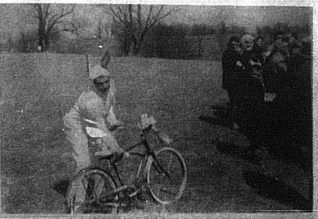
SHE'S A LUCKY WINNER.



HERE'S TWO PRIZES FOR SOME LUCKY WINNERS.



BET HE'S GOT A PLASTIC EGG.



I DIDN'T KNOW EASTER BUNNIES RODE BIKES.



HUNTERS TO THE RIGHT AND HUNTERS TO THE LEFT.



IS THAT A WINNING EGG IN HIS RIGHT HAND.



JUST MORE PEOPLE AND BICYCLES.

With adults shivering and shakng Sunday afternoon, at 2 o'clock -- the kids had great fun -- they didn't seem to mind the cold as they waited for the starting whistle to hunt for those plastic Easter eggs and prizes.

## Journalism Schools, A Seller's Market

"Journalism schools, after experiencing less rapid growth than the college population as a whole, now appear to be growing more rapidly. We may come to the gig sometime, but it now is a seller's market."

Competent copy editors are in great demand. It is the kind of job that only a few years ago a journalism graduate might expect to attain in his first 10 years. Now they can be placed directly into these jobs, and there are not enough competent ones to do it."

The idea that beginning copy editors earn substantially more than the average starting college graduate...

"The promising and decent journalism graduate is on a reasonable par with other professions. But there is too high an attrition rate. Such people develop skills which are useful elsewhere in public relations, public information and speech writing."

He does not believe, however, that salary levels at the top are what they should be. If the graduate is mobile, opportunities are great. In fact, they have never been better.

Prof. Westley adds that nowadays managing editors of even the largest newspapers interview potential writers throughout the country, instead of sending personnel memos to the job.

He believes journalism has a tradition. It believes journalism has a tradition. It believes journalism has a tradition.

## Tentative Schedule For Babe Ruth League

May 6-Braves vs. Dodgers, Giants vs. Senators, May 9-Vets vs. Braves, Dodgers vs. Giants, May 10-Senators vs. Vets, May 13-Braves vs. Giants, Vets vs. Dodgers, May 16-Dodgers vs. Senators, Vets vs. Braves, May 17-Senators vs. Braves, May 20-Senators vs. Giants, Braves vs. Vets, May 23-Giants vs. Dodgers, Vets vs. Senators, May 24-Dodgers vs. Braves, May 27-Giants vs. Vets, Senators vs. Dodgers.

May 30-Braves vs. Senators, Dodgers vs. Vets, May 31-Giants vs. Braves, June 3-Senators vs. Vets, Braves vs. Dodgers, June 6-Giants vs. Senators, Vets vs. Braves, June 7-Dodgers vs. Giants, June 10-Senators vs. Braves, Vets vs. Dodgers, June 13-Vets vs. Dodgers, Braves vs. Giants, June 14-Dodgers vs. Braves, June 17-Dodgers vs. Braves, Senators vs. Giants.

June 20-Braves vs. Vets, Giants vs. Dodgers, June 21-Vets vs. Senators, June 24-Giants vs. Braves, Dodgers vs. Vets, June 27-Senators vs. Dodgers, Giants vs. Vets, June 28-Braves vs. Senators, July 2-Giants vs. Senators, Vets vs. Braves, July 4-Dodgers vs. Giants, Senators vs. Vets, July 11-Braves vs. Dodgers, First team equals home team.

## I-75 And Kentucky River

Photo by: Jerry Schureman, East Ky. R.E.C.C.

## Keep Accurate Farm Records For 1969 Agriculture Census

Good farm records, which always were important to successful farm management, will have an added importance in 1969, says S. O. Allen, agricultural economist with the University of Kentucky Cooperative Extension Service, Lexington.

Accurate records of farm operations, kept by the farmers themselves, will be necessary if the 1969 Census of Agriculture is to obtain clear pictures of national farming trends.

The 1969 census, in contrast to the previous farm censuses conducted every five years, will be taken by mail. Allen notes, "Questionnaires will be mailed in January 1970 and must be filled out and mailed back; response is required by law. You can fill out the questionnaire you receive much quicker and more accurately if you keep careful records in 1969."

"Of course, good farm records for this year will be valuable to you for other reasons, too," Allen emphasizes. "Records are not only important for tax purposes, but they also help you make farm management plans for the future. They help determine how successful the year's operations have been and serve as a diagnostic tool to locate any ill of your farm business."

He points out that the Kentucky Farm Record Book, available through your county Extension Service, will be useful in keeping 1969 records.

The 1969 Census of Agriculture will be the basis for most of the information about farming in the United States and in every county for the next five years. However, an accurate agricultural census must start with the millions of acres of accurate farm records.

Statistics will be published by state and counties and grouped according to characteristics of farms and income ranges, types of farms, cattle and calves by size of herd, hogs and pigs per farm, sheep, lambs, and turkeys by size of flocks, and chickens over three months old by size of flocks.

Information will be collected on the total number of farms, acres in farms, average value of land and buildings per farm, cropland harvested, land irrigated, acreage devoted to major crops, and the number of major kinds of live stock on farms, Allen says.

## A Thank You To Industry...

for making Carlisle an even better place to live.

Blue Grass Industries, Inc.

Carlisle appreciates its industrial neighbors. You brought more business to our community, increased jobs for all our citizens, and... you shared in our community needs and obligations as the great and desirable citizens that you are.

"Industry Appreciation Week," March 31-April 5th, 1969



Carlisle-Nicholas County Chamber Of Commerce

*Easter's here*

Candy Filled Toys  
Easter-Baskets  
Egg Decorating Kit  
Chocolate Covered Eggs  
Candy Hallmark Cards  
Gift Items

Hopkins Drug Co.  
Your Prescription Our Specialty