

Microfilm center t'n.
Margaret O. King Library
University of Kentucky
Lexington, Ky. 40506

The Carlisle Mercury

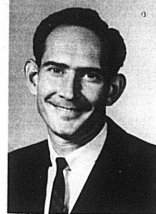
VOLUME 101 NUMBER 26

ESTABLISHED 1867

CARLISLE, KENTUCKY 40311 THURSDAY, JUNE 27, 1968

8 PAGES

PRICE TEN CENTS



McQuery Transfers

Thomas McQuery, Area Extension Agent 4-H Youth, headquartered in Nicholas County for the past two years, will be headquartered in Clark County effective July 1. Mr. McQuery will be doing area work in Nicholas in some phases of the 4-H Youth Program.

Vets, Giants Head All-Star Lineup

It's All-Star football time again. Babe Ruth League managers gathered Friday, June 21, last week for a group of boys to represent Nicholas County in the All-Star football tournament at Ashland, July 15-19.

Two Local Teachers At Morehead Workshop

Herbert Owen and Margaret Simons, Nicholas County are among 50 Kentucky elementary and secondary teachers supervisory and principals participating in a five-week educational institute at Morehead State University.

New Youth Agent

Mrs. Carolyn O'Neil, the former Carolyn Chadwell from Mt. Sterling, will be the acting area 4-H Youth Agent for Nicholas County.

J'cees Announce Program; Ten Areas of Endeavor Is Goal

The Carlisle Jaycees held their annual family fish fry last Wednesday evening at the Fish and Game Club at which time their planned program for the coming year was announced.

Control of Wood Ticks With 4 Insecticides

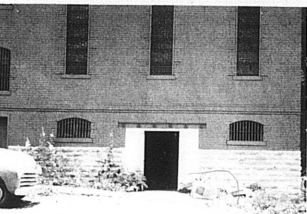
Control wood ticks in infested areas by using DDT, toxaphene, chlordane, or dieldrin. DDT is the insecticide most widely used for this purpose.

Insecticide gives good initial control, but it usually remains effective for a shorter time than DDT, toxaphene, chlordane, or dieldrin. The selected insecticide can be applied as a spray or as a dust. Sprays are sometimes more difficult to apply than dusts, especially if the area to be treated is large and the growth of brush is heavy.

Acres Measurement Now in Progress

The Nicholas County ASC Committee announces that the tobacco crop is now being measured by a group of volunteers who have been given training for this work.

When the farmer is contacted by one of the men to measure the tobacco on his farm, every effort should be made to measure the crop on a timely basis. A limited number of reports are working and the cooperation of the farmer is needed to make this a successful season.



Commodities On The Move

COMMODITIES FOOD STORAGE and distribution under the sponsorship of O.E.O. has a new home due to the requirements of the new City Zoning Ordinance.



Hunt Chosen Player of Week

Dennis Hunt, 15 year old son of Mr. and Mrs. Clay Hunt, has been chosen the Babe Ruth Player of the Week for June 18-21.

John Marr, Saddle Horse Judge Dies

John Marr, 90, a saddle horse judge and a former member of the Kentucky State Fair Board, died Friday, June 21, in the Edgemont Manor Nursing Home at Cynthiana after a long illness.

Whose Ahead?

With 14 games played, here is the way the Babe Ruth standings look at press time.

Recreation Park Open

The Nicholas County Recreational Park is now open from 10 a.m. to 5 p.m., Monday thru Friday, Larry Allison is the park director.



Continued on page eight

SEND IN YOUR RENEWALS