



QUEEN OF TOBACCO FESTIVAL—Patricia Ellen Craig, of Nicholas County was crowned Queen of the Blue Ribbon Tobacco Festival, Cynthia Oct. 25, by Miss Patsy Taylor, Ky. Barley Belle Contestant. From left are Miss Brenda Layman, National Queen of TobaccoLand, Miss Palmer, Miss Craig and Miss Brenda Jean Lambert, runner-up. —Photo by Watson, Cynthia.

WILLIAM D. VAUGHN, 53, died at 2 p.m. Sunday, Nov. 12, at his home on Dorsey Avenue after a one-year illness. He was a member of the Carmel Christian Church and Fisher Lutheran Church. Survivors include his wife, Mrs. Irene Woodard Vaughn, his mother, Mrs. Nancy Vaughn, Nicholas County; his son, William, Roger, Robin, Larry and Dallas Vaughn, all of Carlisle; and Roy Vaughn, Clark County. Services were conducted at 2 p.m. Wednesday at the Mathers-Shearer Chapel by the Rev. Clarence Frazier, burial in the Carlisle Cemetery.



Part of the Jaycee Little League football team shown at the banquet held Sunday, Nov. 5 at the Blue Grass dining room. Each player was awarded a trophy for participating on the team.

O. T. BAILEY, 75, of Moorefield, died at 9:30 p.m. Wednesday, Nov. 8, in St. Joseph Hospital, Lexington, after a one-week illness. He was a retired highway worker and a member of the Moorefield Christian Church. Survivors are his wife, Mrs. Evelyn Bailey; a daughter, Mrs. Hugh Pevehouse, Washington, D. C.; and two sons, Walter Bailey, Virginia, and James Bailey, Ohio. Services were conducted at the Mathers-Shearer Chapel by the Rev. Larry Mittle, burial in the Carlisle Cemetery. Inurners were Clifton and Edna Moore, Roy Holland, Joe Blount, Frank Stone and Hanson Judge.

at Fleming County Hospital, Flemingsburg, after a long illness. He was a patient of being a native of Fleming County and a member of St. Charles Catholic Church, Flemingsburg. Survivors include his wife, Mrs. Mary Adams Conroy, and several nieces and nephews. Services were conducted at 2 p.m. Tuesday at St. Charles Catholic Church by the Rev. Robert Wendlin, burial in Elizaville Cemetery.

P. M. Program "Called to order" with Betty Garber as leader. Scripture: Isaiah Psalm 17, by leader. Lords Prayer in unison. Lesson: Luke 11:1-4. Hymns: "Find A Way," "The following evening at Grace Alliance, Joe Bule and Wynona Smith, Reading "The Art of Thanksgiving, Virginia Fryman, John Surely Goodness and Mercy," Carolyn Snapp, Reading "Give Thanks Today," Betty Livingston. Thank you called to order. Business session. Reading of minutes by secretary. Roy called 10 members present. Aka was via tele reported 41. charity 6. Flower fund collected \$144. One bouquet sent to hospital. Closing as usual with forming our chain. Hymn: Bless Be The Tie That Binds. Prayer and Benediction. Virginia Fryman. Souvenir gifts were given out. Adjourned to meet at the church in December with Betty Livingston, leader. Virginia Fryman and Barbara Snapp will be our business. Following the program we will have our Christmas program and party. Exchanging gifts and traveling one over for the coming year.

DEATHS
CHARLIE EWELL, 93 died at Nicholas County Hospital at 6:45 p.m. Saturday, Nov. 11 after a four-week illness. He was a native of Nicholas County and a member of Moorefield Christian Church. He was the oldest member of the Alabama Fox Hunters Association and a member of the Kentucky Fox Hunters Association. Survivors include five daughters, Mrs. Sadie Scott and Mrs. Wallace Ledford, Carlisle; Mrs. Burris Gillispie, Bourbon County; Mrs. Caudie Beckwith, Covington; and Mrs. Ada Hofford, Pennsylvania; a son, Lloyd Ewell, Covington; a sister, Mrs. F. N. Hoosier, Lynchburg, Ohio; six grandchildren, 11 great-grandchildren and five great-great-grandchildren. Services were conducted at 2 p.m. Tuesday at Mathers-Shearer Chapel by the Rev. Harold Bile, burial in the Carlisle Cemetery. Inurners were Floyd Clark, Bradley Hamm, Herbert McClanahan, Walter Wood, Eddie Roy Price and W. D. Ruddle.

MRS. JOHN FREDERICKS, Mrs. Alma Forstne Fredericks, 65, died at 8 a.m. Friday, Nov. 10, at her Nicholas County home. She was a native of Montgomery County. She is survived by her husband John Fredericks. Services were conducted at 10 a.m. Monday at Mathers-Shearer Chapel by the Rev. Norman Dunlap, burial in Carlisle Cemetery. Inurners were Beverly Johnson, Terry Johnson, Charles Isaac, John Vest, Carl Guy and Reynolds Wagner.

PATRICK HENRY CONLEY, 82, of Elizaville, died at 2 p.m. Sunday, Nov. 12 at Fleming County Hospital, Flemingsburg, after a long illness. He was a patient of being a native of Fleming County and a member of St. Charles Catholic Church, Flemingsburg. Survivors include his wife, Mrs. Mary Adams Conroy, and several nieces and nephews. Services were conducted at 2 p.m. Tuesday at St. Charles Catholic Church by the Rev. Robert Wendlin, burial in Elizaville Cemetery.

Beginning November 19 In Carlisle



You Can Dial Your Own Long Distance Calls...

Thinking now about all those out-of-town friends you'd like to talk to. November 19 will soon be here! Remember, effective November 19, THE PREFIX FOR CARLISLE LONG DISTANCE NUMBERS WILL BE 289 AND IT WILL BE NECESSARY TO DIAL 7 NUMBERS ON ALL LOCAL CALLS. KITHIN CARLISLE.

Southern Bell

YOU'LL LIKE DIALING YOUR OWN LONG DISTANCE CALLS!

Why Not Buy THE BEST!



WASHER WA 1250D



DRYER DE 1220D

NEW GENERAL ELECTRIC HEAVY DUTY WASHERS OFFER YOU THE WIDEST CHOICE OF FEATURES IN EVERY PRICE RANGE!

- *Safety Lid Switch *High Starting Torque V.H.P. G-E Motor
- *Porcelain Enamel Top, Tub & Basket
- *Up to 16-pound clothes capacity *HYDRO-POWER washing system *Programmed washing *3 wash level selection *Edge-lighted control panel *Pre-wash cycle *Soak cycle *Extra Rinse cycle *Cold water wash and Rinse *Non-clogging Pump

WASHER PRICES START AT \$149.95

DRYER PRICES START AT \$109

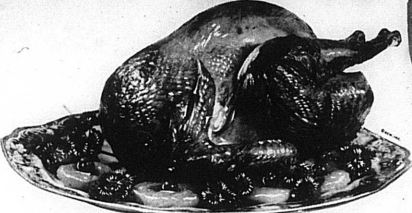
Garrett's Furniture

PRE-KINGSGIVING Food Sale

TOM TURKEYS

18 to 22 lb. average

29¢ lb.



Prices Effective Thru Wed. Nov. 22

Open Until 7:30 Friday Nights	Open Until 8:30 Saturday Nights
-------------------------------	---------------------------------

Phone 289-5433*

*Effective Nov. 19, 1967

HONEY SUCKLE 10 to 16 lb. average
Turkeys lb. 49¢
FIELD
Bacon lb. 59¢
EDWARDS 2 lb. bag
Sausage \$1.19

Fresh Oysters, Fresh Hens, Frozen Ducks

KRAFT 6 oz. Prepared Mustard 10¢
KRAFTS 7 oz. Marshmallow Creme 27¢
Kraft off label Mazola Margarine 1b. 39¢

Hams lb. 79¢ fully cooked
FIELD SEMI-BONELESS
NEWLYMED Ice Cream Cake Roll ea. 59¢
KRAFT Peanut Brittle Candy 39¢

Medium Eggs 3/\$1.00

Kraft Mayonnaise 32 oz. 57¢
K.Y. Food Stores Ice Cream 1/2 gal. 59¢

Stokely's Frozen Mince or Pumpkin Pies ea. 29¢

KLEENEX 50 ct. Dinner Napkins 25¢
Kleenex Towels 39¢ pkx doll
Thrill Liquid giant 49¢
Fishers Mixed Nuts 79¢ 13 oz.

Stokely Beans 4/99¢
Hi-C Fruit Drink 3/89¢
Cheer Detergent 59¢
Reynolds Wrap 2/89¢
Fruit Cocktail 4/99¢
Frozen Limas 4/\$1

ROYAL PRINCE Yams 3-squart 3-\$1
7c off label 42 oz. Spry Shortening 69¢

Stokely's Frozen Mince or Pumpkin Pies ea. 29¢

Jumbo Celery stalk each 19¢
Yellow Onions 3 lb. bag 29¢
Yellow Corn 3 ears 19¢
Cranberries lb. 29¢

DOMINO Sugar 10 lbs. 89¢
LIMIT ONE WITH \$3.00 ORDER

Maxwell House Coffee 59¢
BORDENS Mince Meat 9 oz. 29¢
Pie Crust Shells 2 shells 39¢
Brown & Serve Rolls 29¢

OCEANSPRAY Cranberry Jelly 19¢

Cheese Sticks 10 oz. mild 55¢ mellow 47¢ sharp 69¢ ex. sharp 75¢
KRAFTS JET PUF Marshmallows 10 ct. 19¢

ORANGES 5 lb. bag 49¢

C & G KY FOOD STORES