

**Income Tax Questions**

This column of questions and answers on Federal tax matters is provided by the local office of the U. S. Internal Revenue Service and is published as a public service to taxpayers. The column answers questions most frequently asked by taxpayers.

**Q** - When do you have to file the long Form 1040 instead of the short Form 1040A?  
**A** - The general rules are that the short Form 1040A cannot be used if: (1) deductions are itemized; (2) income was \$10,000 or more; (3) more than \$200 of income was not subject to withholding; (4) special tax status or tax credits are claimed; (5) a fiscal year or accrual accounting method is used; (6) it gives more details on how it can be used and how it should be prepared. Free copies are available at IRS offices as well as many banks and post offices.

**Q** - What can be deducted by salesman for the cost of operating a car?  
**A** - You may be entitled to deduct 10¢ a mile for the first 15,000 miles of business use and 7¢ a mile thereafter if you qualify, or you may deduct the actual cost of operation including depreciation. Of course you car must be an ordinary and necessary business expense. These rules are explained in more detail in the 1967 Form 1040 instruction booklet for the mailing address you should use this year.

**Q** - When does the law on direct filing with service centers go into effect?  
**A** - The law requiring returns to be mailed direct to service centers will be implemented in stages. This year no individual income tax return will be required to be sent direct to the service center although in many districts returns calling a refund can be mailed direct to the service center to speed up processing. Check page 10 of the Form 1040 instruction booklet for the mailing address you should use this year.

**Deaths**  
Nicholas County (East Union Section), the daughter of Laura Ann Wasson Dalzell and a member of the Congregational Church.  
Survivors are a son, Harold L. Dalzell and a granddaughter, of Akron, Ohio.  
Services were held at the Daniels Funeral Home, Friday, Feb. 17 at 1 p.m. by the Rev. George E. Erow, D.D., Burial in Lakeswood Park Cemetery, Rocky River, Ohio.

**KENTUCKY Industry Appreciation Week**  
FEBRUARY 20-25

Read The Mercury  
Station Check # 2889

Harper's Garage  
Check # 4238

**Rural Electric People Keep Their Eyes On The Future**

Keeping step with progress is a habit with rural electric people.

Through the vision and persistence of rural people themselves, with the continuing help of Rural Electrification Administration loans, rural America is now 98 per cent electrified—compared with 10 per cent a few years ago.

Today, rural electricians across the land are serving remote missile bases and radar stations, building atomic power generating plants, and combining their resources and needs to construct the huge fossil-fueled generating plants necessary to meet the ever-increasing demands for electric energy in their service areas.

Yes, rural electric people today have their eyes on the future. As a matter of fact, they haven't lost sight of it for the past three decades.

Harrison Rural Electric Cooperative

**Voters' Registration Deadline is March 25**

March 25 is the last day to register to vote in this year's Kentucky primary election of Democratic and Republican nominees for governor and other state offices. Primary elections in May 23 and polls throughout the state will be open from 6 a.m. to 6 p.m. local standard time. To vote for Democratic candidates, one must be registered as a Democrat. To vote for Republican candidates, one must be registered as a Republican. Independents may not vote in either primary. Persons already registered to vote do not have to re-register unless they have changed their name by marriage, moved from one precinct to another since they last voted or moved from one county to another.

Those eligible to register and vote in the primary must be 18 years old by the time of the Nov. 5 general election, and must have lived in the state one year, the county six months, and the precinct 60 days. If a registered voter is going to be away from his county on primary day he may vote by absentee ballot. To obtain an absentee ballot, one must make notated application to his county clerk not later than May 4. The voter's ballot, also notated, must be returned to the same county clerk so that he will receive it before the polls close at 6 p.m. on primary day.

**NCR Basketball Standings**  
Nicholas County (East Union Section), the daughter of Laura Ann Wasson Dalzell and a member of the Congregational Church.  
Survivors are a son, Harold L. Dalzell and a granddaughter, of Akron, Ohio.  
Services were held at the Daniels Funeral Home, Friday, Feb. 17 at 1 p.m. by the Rev. George E. Erow, D.D., Burial in Lakeswood Park Cemetery, Rocky River, Ohio.

**KENTUCKY Industry Appreciation Week**  
FEBRUARY 20-25

Harper's Garage  
Check # 4238

Station Check # 2889

**Slack Coal CASH and CARRY \$1.00 per ton**

**KENTUCKY Industry Appreciation Week**  
FEBRUARY 20-25

Gene's TV  
Check #2480

**Something New For Carlisle**  
Luther Hollar's  
"Do it yourself" CAR WASH.  
Located on Dorsey Ave.  
WATCH FOR OPENING DATE.

**KENTUCKY Industry Appreciation Week**  
FEBRUARY 20-25

Dorsey Bros. & Fisher

**HEAVEN'S SKY**  
Compute FOOD STORES  
SQUARE DEAL GROCERY

**KY. FOOD STORE**

BACON lb. 59¢  
ROUND STEAK lb. 77¢  
SIRLOIN STEAK lb. 89¢  
T-BONE STEAK lb. 99¢

Sirloin Tip or Rump Roast - 89¢  
Ground Beef - 49¢

Pictsweet Frozen Stew Vegetables 32 oz. 49¢  
Nabisco Pinwheel Cookies 12 1/4 oz. 2 for 89¢  
Nabisco Ideal Peanut Bars 10 3/4 oz. 2 for 89¢

Tomatoes Fla. Vine Ripe LB. 19¢  
Coffee Mate 6 oz. 49¢  
11 oz. 79¢

Pole Beans 19¢  
Extra Fancy Washington WINESAP APPLES 3 in. 59¢

**CHEER** Detergent 15¢ off label giant 59¢  
Ky. Food Stores Instant Coffee 14 oz. \$1.39

Gala Towels twin pak 39¢  
Ivory Liquid giant 59¢  
Wax Paper 100 25¢  
Woolite 8 oz. 69¢  
Aerowax 46 oz. \$1.09

**KENTUCKY Industry Appreciation Week**  
FEBRUARY 20-25

Square Deal Grocery  
Check # 2300

Martha Jane Livesay xx  
Margaret I. King Library  
University of Kentucky  
Lexington, Ky. 40506

**KENTUCKY Industry Appreciation Week**  
FEBRUARY 20-25

**TOBACCO GROWERS TO BEGIN VOTE BY MAIL MONDAY**

Burley tobacco growers in Nicholas County, and elsewhere throughout the eight-state burley belt, will begin voting by mail next Monday, Feb. 27, in the acreage-poupage referendum, a vote considered by burley industry, state and national leaders as one of the most serious ever faced by the growers.

In the last time until 1969 that growers can vote to accept acreage-poupage program provisions, which were offered again this year in an effort to put the tobacco program for burley under reasonable, workable controls to avoid costly surpluses, rapidly rising yields, criticism in Congress, severe allotment cuts, and general dissatisfaction that the program is out-of-hand.

Ballots will be sent to all eligible persons by the county ASC officers. They will be voted and returned by mail to the county ASC office during the five days, Feb. 27-March 3. Envelopes returning ballots must be postmarked before midnight March 3.

This year's referendum was proclaimed by U. S. Secretary of Agriculture C. V. Rouse Johnson after a study of the current situation in burley and its problems. The decision was made because "acreage" controls alone are not working to provide production controls considered necessary if price supports are to be kept. There is fear that out-of-hand yields, without reasonable controls, could cost the grower the entire program, ending price supports.

The acreage-poupage, if adopted, will be in effect for the crop years 1968, and 1969. If the growers vote against the proposed program, another referendum would be necessary in 1968 to vote on the program, as it operates now. At that time, industry leaders say, it is entirely possible that growers will face a substantial allotment cut — if production is as heavy as it was in 1966. There would be considerable unhappiness among growers who would take the cut. It takes a 33 1/3 per cent vote against the program to end it. Under the law, acreage-poupage cannot be offered again until 1969.

The complications of a situation like that, coupled with criticism from outside the burley area, that the growers want supports but not reasonable controls, combine to make the vote in the referendum next week critical, according to burley industry leaders.

The Committee is headed in Kentucky, by a 10-member steering committee, John M. Berry, president of the Burley Tobacco Growers Cooperative Association; Jack Welch, chairman of the tobacco committee, Kentucky Farm Bureau Federation, and S. J. Stokes Jr., chairman of the Burley Farmer-Advisory Council.

Those three organizations, representing growers, and 17 other major groups concerned with burley marketing and its economic impact, are included in the Burley Referendum Committee, which is working together with local committees, including Nicholas County, in support of the acreage-poupage as the best way available under the law to protect the program and price supports.

Growers in Nicholas County and elsewhere in the burley belt have already received their allotment notices for 1967. They include the allotment in line with demand one year.

Under acreage-poupage, growers have a production, an "insurance" feature, against loss caused by weather or other crop failures. Where there are losses, quotas for the following year will be increased because it is a new, and different law, the acreage-poupage legislation adopted by Congress in 1965 provides a more orderly way of working off surpluses by allowing its gradual reduction without severe cutbacks. The formula in the present law has a strict formula in which supplies must be brought in line with demand one year.

Under acreage-poupage, growers have a production, an "insurance" feature, against loss caused by weather or other crop failures. Where there are losses, quotas for the following year will be increased because it is a new, and different law, the acreage-poupage legislation adopted by Congress in 1965 provides a more orderly way of working off surpluses by allowing its gradual reduction without severe cutbacks. The formula in the present law has a strict formula in which supplies must be brought in line with demand one year.

**KENTUCKY Industry Appreciation Week**  
FEBRUARY 20-25

**SECTION TWO**  
**The Carlisle Mercury**

CARLISLE, KENTUCKY 40311 FEBRUARY 23, 1967

**TOBACCO GROWERS TO BEGIN VOTE BY MAIL MONDAY**

Burley tobacco growers in Nicholas County, and elsewhere throughout the eight-state burley belt, will begin voting by mail next Monday, Feb. 27, in the acreage-poupage referendum, a vote considered by burley industry, state and national leaders as one of the most serious ever faced by the growers.

In the last time until 1969 that growers can vote to accept acreage-poupage program provisions, which were offered again this year in an effort to put the tobacco program for burley under reasonable, workable controls to avoid costly surpluses, rapidly rising yields, criticism in Congress, severe allotment cuts, and general dissatisfaction that the program is out-of-hand.

Ballots will be sent to all eligible persons by the county ASC officers. They will be voted and returned by mail to the county ASC office during the five days, Feb. 27-March 3. Envelopes returning ballots must be postmarked before midnight March 3.

This year's referendum was proclaimed by U. S. Secretary of Agriculture C. V. Rouse Johnson after a study of the current situation in burley and its problems. The decision was made because "acreage" controls alone are not working to provide production controls considered necessary if price supports are to be kept. There is fear that out-of-hand yields, without reasonable controls, could cost the grower the entire program, ending price supports.

The acreage-poupage, if adopted, will be in effect for the crop years 1968, and 1969. If the growers vote against the proposed program, another referendum would be necessary in 1968 to vote on the program, as it operates now. At that time, industry leaders say, it is entirely possible that growers will face a substantial allotment cut — if production is as heavy as it was in 1966. There would be considerable unhappiness among growers who would take the cut. It takes a 33 1/3 per cent vote against the program to end it. Under the law, acreage-poupage cannot be offered again until 1969.

The complications of a situation like that, coupled with criticism from outside the burley area, that the growers want supports but not reasonable controls, combine to make the vote in the referendum next week critical, according to burley industry leaders.

The Committee is headed in Kentucky, by a 10-member steering committee, John M. Berry, president of the Burley Tobacco Growers Cooperative Association; Jack Welch, chairman of the tobacco committee, Kentucky Farm Bureau Federation, and S. J. Stokes Jr., chairman of the Burley Farmer-Advisory Council.

Those three organizations, representing growers, and 17 other major groups concerned with burley marketing and its economic impact, are included in the Burley Referendum Committee, which is working together with local committees, including Nicholas County, in support of the acreage-poupage as the best way available under the law to protect the program and price supports.

Growers in Nicholas County and elsewhere in the burley belt have already received their allotment notices for 1967. They include the allotment in line with demand one year.

Under acreage-poupage, growers have a production, an "insurance" feature, against loss caused by weather or other crop failures. Where there are losses, quotas for the following year will be increased because it is a new, and different law, the acreage-poupage legislation adopted by Congress in 1965 provides a more orderly way of working off surpluses by allowing its gradual reduction without severe cutbacks. The formula in the present law has a strict formula in which supplies must be brought in line with demand one year.

Under acreage-poupage, growers have a production, an "insurance" feature, against loss caused by weather or other crop failures. Where there are losses, quotas for the following year will be increased because it is a new, and different law, the acreage-poupage legislation adopted by Congress in 1965 provides a more orderly way of working off surpluses by allowing its gradual reduction without severe cutbacks. The formula in the present law has a strict formula in which supplies must be brought in line with demand one year.

**KENTUCKY Industry Appreciation Week**  
FEBRUARY 20-25

**When you plant the BEST... You harvest the MOST...**

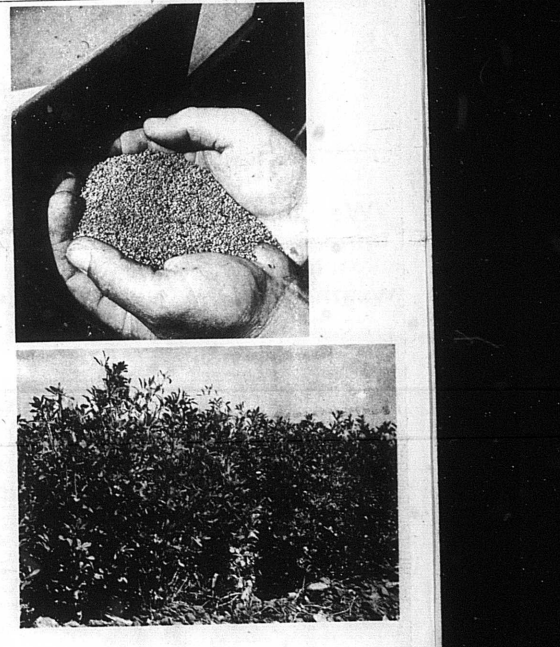
**Southern States Quality SEEDS**

● This year, when you're making your seed buying decisions, you'll find it pays to keep this in mind: *You harvest the most when you plant the best.* It's pretty hard to argue with that, isn't it? Yet some farmers still try to pinch a few pennies per acre with cheap or questionable seeds. They save a little at planting time but they lose a whole lot at harvest time. There's no getting around the fact that in order to end up with crops that really pay, you've got to start out with seeds that really grow. Southern States Quality Seeds. See your Southern States Cooperative Agency now.

**Southern States Cooperative**

the United States, notably California, where considerable tobacco research has been done in recent years.

**DUNCAN'S ELECTRICAL SHOP**  
Service your TV or Radio. Contract Wiring—Call for a FREE Estimate.



But they lose a whole lot at harvest time. There's no getting around the fact that in order to end up with crops that really pay, you've got to start out with seeds that really grow. Southern States Quality Seeds. See your Southern States Cooperative Agency now.