

Agree or Not

Continued from Page 2
with Jolly in the primary. He did it this way, "Jolly may not want to team with me," he said. But political observers here know that many of the same people in the party support the two men, and the logical deduction is that Waterfield and Jolly will wind up running together. If it would seem to be to their mutual interest. Both know they will find no success within administration circles.

There is some talk within the inner circle of administration supporters that they should concentrate their support on one candidate for lieutenant governor to solidify their efforts behind Ward for the top spot.

As observers here view the gubernatorial race now, it lies between Ward, Chandler and Waterfield with Ward having the advantage since the other two must draw from the "outs" or the opposition faction of the Democratic Party.

Too, whatever votes the other six candidates draw would tend to split the opposition and would be favorable to Ward.

The administration hasn't made a decision in the field for lieutenant governor and has no tempo to do so at the moment because the leaders don't want to alienate anyone. Ward certainly cannot take a hand in it.

Emissaries may be approaching Matthews and Ford within the next few days with some sort of compromise plan to work out this situation by one of them withdrawing, but, at the moment, each seems to feel that he can win. If both stay in the race, the situation is presented that each will be fighting for himself and getting votes where he can and without Ward being their primary concern. In a close race, there could be danger in this.

But, there is the experience of the last primary when Breathitt won. John Breckinridge, who is now running for attorney general, had been a strong supporter of then Gov. Bert T. Combs, but the administration did not team Breckinridge with Breathitt. Waterfield was running for lieutenant governor with Chandler. Breathitt was slated election day by administration forces with Breckinridge in areas where he was strong, but when they got to Waterfield's home country of Western Kentucky, the administration slated Breathitt with Waterfield. But, in that race, it must be remembered there were only two strong candidates for lieutenant governor. Now, there are four. If Lowman is out in the coil with Ward and Waterfield, he could team with Chandler, Trapp or Buckman.

Thus, the administration would find itself with two candidates fighting for votes any place they could get them. This is the dilemma.

Fish Fry at Rectory
There will be a fish fry on Friday, April 7 at 6 p.m. at 617 East Main Street in the Rectory.

LAST DAY - SATURDAY -
REXALL
Carlsle Drug

Anything Available For Needy
Anyone needing clothing may get items by consigning to the door at 617 East Main Street.

Bourbon
DRIVE-IN
At 7:30 Sp. & Mon.

An Epic Western Color Starring Steve McQueen and Brian Keith

"NEVADA SMITH"
At 10 P.M.
In Color

"THE PSYCHOPATH"

SALE

Carlsle Drug

SEEDS & FARM SUPPLIES

Puritan Field Seed

Tobacco Seed

Plant Bed Supplies

Top Dressing for Tobacco Beds

Garden Seed

Laun Mowers • Rotary Tillers

Nicholas Feeder Supply

PHONE 1008

April Food Specials

SAVE ON EVERY SERVING!

Chuck Roast **Shoulder Roast**
lb. 49¢

Spare Ribs lb. 59¢

Kahn Wieners lb. 69¢

GROUND BEEF

39¢ lb.

49¢ lb.

59¢ lb.

3 for \$1

59¢

59¢

89¢

89¢

99¢

89¢

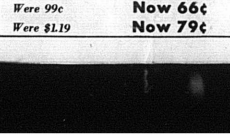
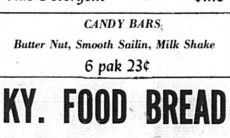
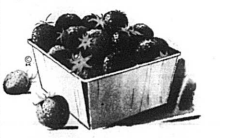
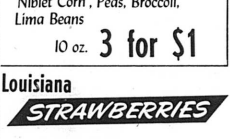
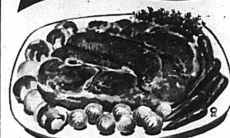
89¢

9¢

40¢

66¢

79¢



SUNSHINE STATE FROZEN

ORANGE JUICE

6 oz. 6 for 79¢

6 for 79¢

6 for 79¢

6 for 79¢

6 for 79¢

6 for 79¢

6 for 79¢

6 for 79¢

6 for 79¢

6 for 79¢

6 for 79¢

6 for 79¢

6 for 79¢

6 for 79¢

6 for 79¢

6 for 79¢

6 for 79¢

6 for 79¢

6 for 79¢

6 for 79¢

6 for 79¢

6 for 79¢

6 for 79¢

6 for 79¢

6 for 79¢

6 for 79¢

6 for 79¢

6 for 79¢

6 for 79¢

6 for 79¢

6 for 79¢

6 for 79¢

6 for 79¢

SUNSHINE STATE FROZEN

ORANGE JUICE

6 oz. 6 for 79¢

6 for 79¢

6 for 79¢

6 for 79¢

6 for 79¢

6 for 79¢

6 for 79¢

6 for 79¢

6 for 79¢

6 for 79¢

6 for 79¢

6 for 79¢

6 for 79¢

6 for 79¢

6 for 79¢

6 for 79¢

6 for 79¢

6 for 79¢

6 for 79¢

6 for 79¢

6 for 79¢

6 for 79¢

6 for 79¢

6 for 79¢

6 for 79¢

6 for 79¢

6 for 79¢

6 for 79¢

6 for 79¢

6 for 79¢

6 for 79¢

6 for 79¢

6 for 79¢

KY. FOOD STORE

Ice Cream 1/2 Gal.

59¢

59¢

59¢

59¢

59¢

59¢

59¢

59¢

59¢

59¢

59¢

59¢

59¢

59¢

59¢

59¢

59¢

59¢

59¢

59¢

59¢

59¢

59¢

59¢

59¢

59¢

59¢

59¢

59¢

KY. FOOD STORE

Ice Cream 1/2 Gal.

59¢

59¢

59¢

59¢

59¢

59¢

59¢

59¢

59¢

59¢

59¢

59¢

59¢

59¢

59¢

59¢

59¢

59¢

59¢

59¢

59¢

59¢

59¢

59¢

59¢

59¢

59¢

59¢

59¢

Green Giant Frozen

Niblet Corn, Peas, Broccoli,

Lima Beans

10 oz. 3 for \$1

3 for \$1

3 for \$1

3 for \$1

3 for \$1

3 for \$1

3 for \$1

3 for \$1

3 for \$1

3 for \$1

3 for \$1

3 for \$1

3 for \$1

3 for \$1

3 for \$1

3 for \$1

3 for \$1

3 for \$1

3 for \$1

3 for \$1

3 for \$1

3 for \$1

3 for \$1

3 for \$1

3 for \$1

Biltmore Luncheon Loaf Made with Chicken

Maxwell House Instant Coffee

Stokely Peaches Halves, sliced 2 1/2 size

4 for \$1

4 for \$1

4 for \$1

4 for \$1

4 for \$1

4 for \$1

4 for \$1

4 for \$1

4 for \$1

4 for \$1

4 for \$1

4 for \$1

4 for \$1

4 for \$1

4 for \$1

4 for \$1

4 for \$1

4 for \$1

4 for \$1

4 for \$1

4 for \$1

4 for \$1

4 for \$1

4 for \$1

4 for \$1

Louisiana

STRAWBERRIES

3 Pints for \$1.00

\$1.00

\$1.00

\$1.00

\$1.00

\$1.00

\$1.00

\$1.00

\$1.00

\$1.00

\$1.00

\$1.00

\$1.00

\$1.00

\$1.00

\$1.00

\$1.00

\$1.00

\$1.00

\$1.00

\$1.00

\$1.00

\$1.00

Biltmore Luncheon Loaf Made with Chicken

Maxwell House Instant Coffee