

The Carlisle Mercury

ESTABLISHED 1847

Published Every Thursday At Carlisle, Kentucky

Entered as second class matter on the post office at Carlisle, Kentucky, on March 3, 1927.

WARREN R. FISHER

Editor-Proprietor

Subscription Rates Per Year

In-County, one year . . . \$3.00 plus 9¢ tax \$3.09
Out-Of-State, one year . . . \$4.00

Not By Bread Alone

Some years ago, in a book J. C. Penney, head of the great merchandising system that bears his name, wrote: "We are today the world's greatest nation. We're the mightiest. We're the wealthiest. Yet we are not the first in history to attain that top spot among the nations of the world. One nation after another has made the long struggle upward, and for a period of time, some longer than others, on the pinnacle of national greatness and power, and disappeared down the other side.

"Because we hold today the position England held fifty years ago, the position so many other nations held before her, it behooves us that we ask our selves where we'll be fifty years from now. . . That answer will be found to be spiritual as well as industrial, moral as well as economic. For neither men nor nations can live by bread alone.

"Some of those nations we have with us yet. Others are not more than muffled rumbles on the desert of time. . . It's important that in the United States keep this in mind. This power which we possess today is not necessarily permanent. This wealth is not necessarily enduring. It can disappear within the lifetime of some of those who read these

FIRST OF A SERIES

Our County Hospital

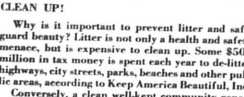
(This is the first of a series of articles which includes the purchasing of X-ray equipment, and the employment of additional technical and professional personnel. . . .) On July 2, 1950, at Carlisle, Nicholas County, Kentucky, there was dedicated a humanitarian institution, dedicated to the care and comfort of the sick of Nicholas County and to any others in need of hospital care. On September 1, 1950, the doors were opened to patients, and since that time, there have been a healing dream of our citizens who realized there was a hospital large enough to adequately take care of our sick at a local level. We have a proud hospital, which has rendered much sorely needed service, and which is in a position to give much more excellent service. However, the quality of that service depends squarely on the people of Nicholas County for your financial support—both now and in the future.

present time is the financing of these articles, which includes the purchasing of X-ray equipment, and the employment of additional technical and professional personnel. . . .) Much has been written over the years and the request for better care for the hospital. Now the hospital is entering a critical period. The hospital wants to serve all the citizens of Nicholas County. Many times now turn away the citizens who are over the age of 65, merely because they qualify for Medicare? Must these people, who are over 65, merely for medical treatment because of the need for necessary repairs and equipment? . . .

Twenty & Forty-Five Years Ago

Thursday, May 23, 1946 hotel in Lexington, Monday. . . . The As You Like It Club will meet with Mrs. Ivesaline Fry, Thursday, June 2, at her home on Sycamore. . . . Married: Miss Clarine Bunsell and Kervet Thornsburg, Saturday afternoon at the home of the officiating minister, Rev. Frank Simpson, Miss Bessie De Roanest and Raymond Thompson on May 18 by Rev. Theophilus W. Farmer in Mt. Sterling. . . .

Thursday, May 26, 1921 Rev. A. V. Bolton and family leave for home on a Palmolive week-end tour to be pastor of Baptist Church. . . . Rev. W. P. Crouch will preach farewell sermon Sunday, May 28, at 10:30 a. m. . . .



CLEAN UP!
Why is it important to prevent litter and safeguard beauty? Litter is not only a health and safety menace, but is expensive to clean up. Some \$500 million in tax money is spent each year to de-litter highways, city streets, parks, beaches and other public areas, according to Keep America Beautiful, Inc. . . .

Remember, only people are litterbugs. And people's habits can be changed.
market retailing at 35¢ per quart. . . . Mrs. Henry Metcalfe boys from R. O. Duncan his residence on North Allen Jones, 67, at home in Moorefield, Tuesday.

Readers Comments

Dear Mr. Fisher: Enclosed is my money for another year subscription to the Carlisle Mercury. . . .

Yours truly, Mrs. Oscar Hughes 411 Schubert Ave. Mayville, Illinois

Farm Home

Earl L. Nafziger, County Agent, Nicholas County, Associate County Agent, Margaret H. Wilson, Home Agent

Put Winter Clothes Away Clean
Getting spring and summer clothes out of storage is one of the nice things about warmer weather. . . .

CAN YOU SPARE SECONDS?
There's a lot to be done in 30 seconds. . . .

MERCURY VAPOURS

Conservation District. Among other things, they are good for screens and barriers, erosion control and in some instances the berries are eaten or used for jelly. . . .

New Look In 4-H Camping

Lexington—There's a new look in Kentucky 4-H camping this year, according to John H. Heller, Lexington 4-H camp program specialist. . . .

Used Farm Machinery

Farmall M Tractor
Farmall M Tractor
Farmall MD Tractor
Folland 68 Saler
International 40 Baler
Post Hole Digger For Super A
Several Good Holland Tobacco Setters

Buntin's SPECIAL HAWK



6 PATTERNS 6 COLORS
9 x 12 foot size only
\$599 & \$795
For "All-You-Can-Eat" in the SULKY ROOM at the LEXINGTON TROTTS

Local Business

"Repeat Exposure Value" Proven Very Effective
Multiple exposure does not take place in other forms of local advertising. . . .

Repeat Exposure Value

Repeat exposure value is a term used to indicate the impact gained by an advertisement when seen more than once. . . .

Personal Contact and Attention

At most camps, age-oriented programs will be held in the mornings. . . .

Personal Contact and Attention

Among the different types of security benefits are junior camps, with younger members from several counties attending senior camps. . . .

Medicare

Even without considering the Medicare program, the 1965 Amendments make sweeping changes in the way the old-age, disability, and survivors insurance programs are administered. . . .

Compost Will Help Your Home Garden

Low organic content of the soil and a poor crop rotation plan cause many of the problems in home vegetable gardens. . . .

Compost Will Help Your Home Garden

The average home gardener throws away enough organic matter each year to build and maintain an excellent home garden soil. . . .

THE CARLISLE (KY.) MERCURY

placed in a compost pile in the corner of the garden and provides a continuing supply of organic matter. . . .

THE CARLISLE (KY.) MERCURY

Often a gardener moves vegetables to a new location because he has not been satisfied with results where it was before. . . .

NOW OPEN FOR BUSINESS at our new location. Banking Hours

Drive-In 7:30 A.M. to 6 P.M.
Main Bank 8:30 A.M. to 3 P.M.

Main bank and Drive-In close at NOON on Wednesday.
Moorefield banking hours as at present.

First National Bank

Grand Opening Saturday, May 28th, 1:30 to 5 p.m.

Grand Opening

First National Bank of Carlisle

Drawing every 1/2 hour

- Refreshments
- Free Balloons for the kiddies

GRAND OPENING PRIZES WILL INCLUDE

23" COLOR TELEVISION
12 GAUGE BROWNING AUTOMATIC SHOTGUN
40 BASEBALLS AUTOGRAPHED BY THE GINCHINATI REDS
\$0.50 SAVINGS ACCOUNTS

Attend the Formal Opening and register for these valuable prizes. You do not have to be present to win.

A Special Invitation to One and All



Neal's Square Deal