

Two Kinds Of Health Insurance

The 1965 Social Security Amendments established two kinds of health insurance for people 65 or older. This health insurance is popularly known as "Medicare."

The "Hospital Insurance" part of the program covers nearly every American 65 or over (except for certain Federal employees and certain aliens.)

1. Except for the first \$40, it pays for covered hospital services up to 90 days in a participating hospital during a spell of illness. It also pays for all but \$10 daily for covered services up to 60 days in a participating hospital during a spell of illness. It also pays for all but \$10 daily for covered services up to 30 days of care.

Donate \$200.20



Personnel of Blue Grass Industries presented their voluntary Red Cross donations totaling \$200.20 to the chairman, Mrs. Edgar Scott, and Treasurer, Sterling Blake, on Friday, March 18, in the company dining room. Pictured below are the unit workers: left to right: Nancy Fryman, Mary Ruth Gray, Mildred Greene, Carolyn Smith, Doris Leggett, Laura Mitchell, Mona Brady, Mrs. Edgar Scott, County Chairwoman, Second row: Wanda Shroat, Elizabeth Elyvins, Margaret Cameron, Carolyn Kenney, Leona Trussell, Sandra Berry, Ann Blake, Mary Carter, Sterling Blake, Treasurer. Third row: Linda Bost, Leona Morton, Dean Watkins, Shirley Lyons, Elma Curtis, Birdie Lawson, Bobbie Reid. Absent when picture was taken: James Mann, James Wellis, Shirley Gray.

ered services for an additional 30 days of care.
2. It will pay 80% of the cost for diagnostic services received as an outpatient of participating hospitals during a 20-day period, except for the first \$20 each period.

3. It will pay Post-hospital Extended Care in a facility which qualifies (after hospitalization of at least 3 days) for 20 days during a spell of illness. An additional 80 days is provided with patient paying \$5 daily.

4. It pays certain Post-hospital Home Health Care Services furnished under an approved plan. This includes up to 100 visits during year following hospitalization of 30 or more days. Services of visiting nurses, physical therapists, and other health workers (excluding doctors) are covered. Effective date of above is 7/1/66, except for posthospital extended care benefits which start 1/1/67.

The Supplemental Medical Insurance Program provides for paying doctor bills and certain other medical bills. Persons wishing this coverage must enroll and pay a monthly premium (\$3 monthly). It pays 80% of reasonable charges for covered services except for first \$50 in calendar year.
1. It covers a physical examination and certain other medical services.

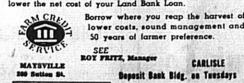
Speeches Postponed

Due to so much sickness among all the students, the 4-H Speech event has been postponed until Saturday, April 2. It is hoped that by then, the flu bug will have faded into the past and that our 4-Hers will again be feeling good.

YOU Harvest The Savings With a LAND BANK LOAN

Finance all your farm real estate credit needs with a Land Bank Loan. You'll save these ways:
• Your interest rate is low—only 5% per cent annually. And Land Bank Loans can be arranged for as long as 40 years.
• The Land Bank charges no application, appraisal, closing or loan service fees.
• You pay no penalty for repaying all or any part of your loan ahead of schedule.
• Land Bank Associations are owned by the farmers they serve. Dividend payments by your local Association can lower the cost of your Land Bank Loan.

Borrow where you reap the harvest of lower costs, sound management and 50 years of former preference.
SEC. BOT FRYE, Manager
CARLISLE
Deposit Bank Bldg. on Tuesdays



Select Spring and Easter Fashion Now Deposit Holds on Convenient Lay-Away Plan



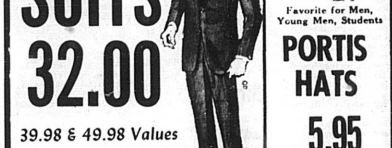
Men's Long Sleeve White Dress Shirts

2 FOR \$5 \$2.69 EACH



These are terrific dress shirts our regular \$2.98 quality! Every shirt carefully tailored for perfect fit. SANFORIZED OXFORD CLOTH SHIRTS have button-down collar. SANFORIZED BROADCLOTH SHIRTS have regular collar. They're machine washable!

All Wool SUITS 32.00



39.98 & 49.98 Values

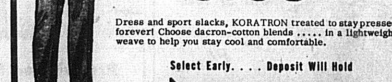
All wool worsteds and hopsacking suits, with fine detail tailoring. Solid colors and patterns sure to please every man. (No charge for necessary alterations.)

Men's All Wool Sport Coats and Blazers 19.98



Easy-to-wear sport coats and blazers in lightweight fabrics you'll find comfortable. Solid colors, all-over patterns and plaids all man pleasers.

Dress and Sport Slacks 5.98



Dress and sport slacks, KORATRON treated to stay pressed all day long! Choose dacron-cotton blends in a lightweight weave to help you stay cool and comfortable.

Select Early . . . Deposit Will Hold
LERMANS
SATISFACTION GUARANTEED



Favorite for Men, Young Men, Students
PORTIS HATS 5.95

Nationally advertised PORTIS hats are hand-crimped styled to please men in every age group. Favorite shapes, brims, colors.

Just 6 years ago We **Busted!** Loose in our New Buildings

NOW We are Moving Ahead

with a Huge



We're Growing

and We are Busting Out

at the Seams with Brand New Merchandise

We Need S - P - A - C - E and are Sacrificing Price

in order to Make More Space Below are just a few of the

TREMENDOUS VALUES being offered at **GARRETT'S**

Free Souvenirs to the Ladies
7 Piece EARLY AMERICAN Living Room Group
Free Berkline Tilt Back Chair To Be Given Away
2 Pc Early American Suite \$198⁸⁸
3 Maple Finished Tables
2 Early American Lamps
Drawing April 23rd

9 x 12 Linoleum RUGS Many Patterns \$377	3 Tier Utility CART Electric Outlet \$277	Occasional Chairs Print Covers \$1888	3 Piece Bedroom Suite Big 54" Double Dresser 34" Chest Bookcase Bed \$129.95 <small>119.95 Value</small>
12x12 To 12x18 Mill End RUGS Completely Bound Ready for use. \$7888	24" All Metal Kitchen Stool White \$100 Turquoise In Carton	7 Piece Dinette Set Prices Start at \$6995 Free Wall Clock With Each Dinette	20" Window Fans Eskimo 2 Speed \$1888 General Electric 3 Speed \$2488 G. E. 3 Speed Deluxe \$2888
27x54 RUG SAMPLES Nylons Acrylics Wool \$12.95 Value \$500	3 Piece Bedroom Suite Big Double Dresser (Shadow Box Mirror) Roomy Chest Bookcase Bed 149.95 Value \$9900	Buy that Air Conditioner Now From 3000 B.T.U. To 23000 B.T.U. Prices Start At \$9995	Good Used Appliances 6 Good Used Refrigerators \$4995 up 7 Used Electric Ranges \$4995 up 3 Used Gas Ranges \$2495 up

GARRETT'S FURNITURE

NOTICE

Anyone wishing to pay their delinquent taxes may do so NOW before the list is advertised.

J. Maurice Cameron
Sheriff, Nicholas County

Telephone Talk
by Your Telephone Manager
CHARLES A. HARRIS



RECENTLY IN THIS COLUMN WE TALKED ABOUT WESTERN ELECTRIC AND THE TREMENDOUS AMOUNT OF PURCHASING IT DOES TO SUPPLY BELL TELEPHONE EQUIPMENT. This time, let's talk about Western Electric manufacturing.

First of all, Western is the largest manufacturer of telephone equipment in the world! These facts may give you an idea of the vast scope of its service.

- In 1964 Western Electric produced enough telephones to provide a set for every man, woman, and child in New York City.
- It made enough central office switching equipment to serve all Bell telephones now operating in Boston, Chicago, Denver, New Orleans and San Francisco combined.
- It manufactured enough wire to circle the earth at the equator nearly 2400 times.
- Western Electric investment in plant facilities before depreciation passed the 1.3 billion dollar mark in 1964, up \$2 million from 1963.

Perhaps you wonder how Western knows the right amount of equipment and material the telephone companies are going to need. Well, on commonly used items like wire, poles, telephone sets, etc., the companies plan their probable requirements as much as two years ahead.

On big items like complete dial offices and long distance equipment which have to be engineered and manufactured to fit specific places and situations, Western is also notified well in advance.

In other words, Western Electric manufactures only equipment that has been specifically placed on order. It does not supply a company with any items not requested. This kind of careful planning results in lower cost of equipment bought by the Bell System. And of course, to you this means low-cost, high-quality telephone service and equipment!