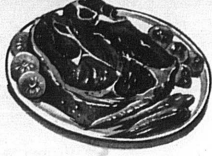


Food Finds for THRIFTY SHOPPERS

CHUCK ROAST



lb. **49**

Chuck Steaks lb. 69¢

- Lady Scott Bath Room Tissue 2 roll packs 29¢
- Cut-Rite Plastic Wrap 100 ft. roll 29¢
- Brachs Chocolate Covered Peanuts lb. 49¢
- Lipton Instant Tea 6 oz. 89¢
- Lipton Tea Bags 48 ct. 65¢
- Lipton Tea Bags 16 ct. 23¢
- Lipton Tea 1/4 lb. 41¢
- Dixie Queen Grade A Milk 1/2 gal. 45¢
- Fab Detergent 10¢ off label giant 59¢
- Strietmann Zesta Crackers lb. 31¢

BANANAS



10¢ lb.

Pillsbury

- Cake Mixes all flavors 3/89¢
- Frostings all flavors 3/89¢

Shoulder Roast lb. 59¢

Ground Chuck lb. 69¢

Bacon lb. 79¢

Fischer's Mellwood Bacon lb. 79¢



plain & self rising 10 lbs. \$1.09

Fla. Celery



stalk 19¢

Yams 3 lbs. 25¢

Ky. Food Store Ice Cream 1/2 gal. 59¢

In Service

MATHES ABOARD USS HORNET
Aviation Electronics Technician Third Class Charles B. Mathes, USN, son of Mrs. Laura C. Mathes of Route 2, Carlisle, is off the coast of Vietnam in the South China Sea with Helicopter Anti-Submarine Squadron Two (HS-2), deployed aboard the anti-submarine warfare support aircraft carrier USS Hornet. He is supporting the Seventh Fleet units operating off the Vietnamese coast. Seventh Fleet units are conducting air strikes against communist targets and providing naval gunfire support for friendly forces in Vietnam in support of President Johnson's policies in Southeast Asia.

HAMILTON PROMOTED
Weatherfield, England—Don W. Hamilton, son of Hamilton W. Hamilton of Hartsville, has been promoted to staff sergeant in the U. S. Air Force.

Sergeant Hamilton is a munitions specialist at Wetherfield RAF Station, England. He is a member of the U. S. Air Forces in Europe. Hamilton's overseas air arm assignment in England. The sergeant is a graduate of Nicholas County High School at Carlisle. He is married to the former Grace L. Foulds from England.

IN KOREAN EXERCISE
Army PFC Rondall L. Storey, son of Mr. and Mrs. Stanley R. Storey, Route 2, Carlisle, took part in Flying Tackle II, a one-week field training exercise conducted by I Corps in Korea that ended Feb. 12.

Storey participated in weapons firing and tactical maneuvers designed to maintain the combat proficiency of his unit. He is a guard in Battery C of the 12th Artillery's 6th Battalion. Storey entered the Army in November 1964 and was last stationed at Fort Knox, before arriving in Korea in June 1965. The 22-year-old soldier was graduated in 1961 from Nicholas County High School in Carlisle. Before entering the Army, Storey was employed by Universal Wire and Spring, Georgetown.

man George, Sunday.
Mr. and Mrs. Paul Ed her parents, Mr. and Mrs. Tom George, Sunday.

Mr. and Mrs. Clara Fryman were guests of their parents, Mr. and Mrs. Harrison Fryman on Sunday.

Mr. and Mrs. Frank Flora spent Sunday with his son, Mr. and Mrs. W. J. Flora and children, Submarine Squadron Two (HS-2), deployed aboard the anti-submarine warfare support aircraft carrier USS Hornet.

Miss Flora spent Sunday while with her parents.

Mrs. Jessie White and daughter and her mother, spent Sunday with Mr. White at Jackstown.

Mrs. Leona Walton visited Mable Shroat Sunday.

Mr. and Mrs. Edgar Niblett and daughter spent the weekend with her parents, Mr. and Mrs. Milton Flora of Opa Crawford and son spent Sunday afternoon with Miss Rose Flora and granddaughter.

Miss Rose Flora spent Saturday night with Jo Ann McKeen.

Homemakers
Headquarters by Mrs. Reynolds Allison. Homemakers enjoyed the hospitality of Mrs. Eugene Neal at her home on Chestnut Street, Feb. 1. The club presented Mrs. Neal an arrangement of carnations. Mrs. Caldwell, president, read a poem "Why I Go To Church."

Ten members and Mrs. Margie Wilson, home agent, answered roll call by naming a president.

The club was glad to have Mrs. Grimes Caywood as an all day visitor with Mrs. Manuel Crawford and Mrs. Ernestine Eads as dinner guests.

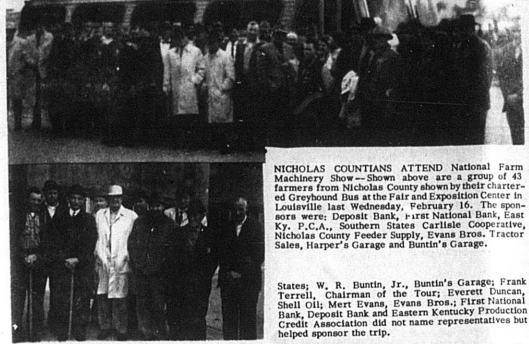
Mrs. George Dale gave the lesson on bridesmaids and illustrated with pictures. She showed us how to cut, fold, and sew and braid the strips. Mrs. Dale has a good size rug already in the room which will be 9' x 12' when completed. Mrs. Wilson and Mrs. Neal were in the process of braiding their rugs.

Ky.-Tenn. Meat Recipe books were given to each member to sell. Everyone enjoyed the cute Valentine games led by Mrs. Veach Delaney with an exchange of Valentine.

Adjourned to meet March 1 at the Assembly Room in the Post Office Building.

HELP!

WANTED -- good used tractors to supply our many customers asking for late model tractors. If you have a good International, Ford, or Massey Ferguson we'll give top dollar for it on any new 140, 404, 424, or 504 International.



REPRESENTATIVES OF local concerns sponsored a trip to Louisville last Wednesday to attend the National Farm Machinery Show. Lunch was provided by local oil dealers. Representatives shown in the picture are from left: J. W. Icton, Ashland Oil; Keith Hardwick, Gulf Oil; Luther Clay, Harper's Garage; Kenneth Stephenson, Nicholas Co. Feeders Supply; Russell Alexander, Standard Oil Co.; James Lowe, Southern States; W. R. Buntin, Jr., Buntin's Garage; Frank Tarell, Chairman of the Tour; Everett Duncan, Shell Oil; Mert Evans, Evans Bros.; First National Bank, Deposit Bank and Eastern Kentucky Production Credit Association did not name representatives but helped sponsor the trip.

Buntin's

ASK FOR A DEMONSTRATION TODAY!

When You Plant The Best

Get Southern States Quality Seeds Now

Seeds that Really Grow

Storm Windows Made to Order Aluminum Storm Windows Prices Start At \$11.98

INSTALLATION EXTRA

Dorsey Bros. & Fisher

Carlisle Co-operative Carlisle Phone 87

Your Southern States Cooperative Agency

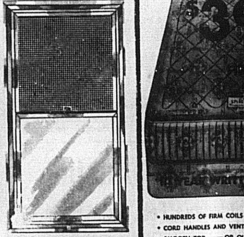
Which Tax Form is Best?

- Q - How can I tell whether I'm qualified to use the simple card Form 1040A?
- A - The instruction booklet covers this.
- Generally speaking, Form 1040A cannot be used if:
 - deductions are itemized
 - income is \$10,000 or over
 - more than \$200 of income is not subject to withholding tax
 - special tax status or tax credits are claimed
 - you are delinquent in filing your return
- Q - I was off the job for two months last year with a kidney infection. Is the \$80 a week (received in sick pay deduction)?
- A - If the \$80 a week you received was 75 percent or less of your normal salary and you were hospitalized at least one day, you may deduct \$75 a week for the first 30 days of your absence and \$80 a week thereafter. For weeks not hospitalized, nothing can be deducted until after a 7 day waiting period, beginning with the first day of work you miss. Then you may deduct \$75 a week for the next 28 days, and the full \$80 thereafter.
- Q - However, if the \$80 a week you receive was more than 75 percent of your normal salary then the waiting period is 30 days from the first day of absence from work, and nothing will be deducted until that period is up. This will be true whether or not you are hospitalized.
- Q - The maximum amount deductible after the first 30 days is \$100 per week.
- Q - I have a refund coming. Can't split it up and take part in cash and part in savings bonds?
- A - No. You must elect to have your refund either in cash or bonds. However, where bonds are elected, any excess amount above the cost of the maximum number of bonds will remain in cash. You may elect to have part of the overpayment applied to next year's estimated tax, and the rest taken either in cash or bonds.

WISH I'D SAID THAT

"Whomals neglect boats the worst kind of attention." Mari: Phelps, Harrisburg (Overseas) Bulletin.

"Doing business on the cuff is a good way to lose your shirt." Omer Bridgman, The Baylis (IL) Guide.



Storm Windows Made to Order Aluminum Storm Windows Prices Start At \$11.98

INSTALLATION EXTRA

Dorsey Bros. & Fisher

Q - How much can I receive in dividends before they become taxable?
A - Individuals may now receive up to \$100 in dividends of four married couples where both have dividends, each may receive up to \$100 in qualified dividends tax-free.

Q - How does the \$100 Door on casualty and theft losses work?
I had several small losses that cost me nearly \$400 in total last year. Can I combine them and just subtract the \$100 from the total loss to me?

A - No. Casualty and theft losses or property used for personal purposes must exceed \$100 for each casualty or theft, and only the unreimbursed excess over \$100 per loss may be deducted on federal tax returns.

The exception to this is when a husband and wife both experience losses in the same casualty or theft. If they both lose property in the same casualty or theft all unreimbursed losses over \$100 are deductible on a joint return if property is jointly owned.

Remember a theft loss should ordinarily be reported to the police. You must be able to prove that you actually suffered a loss, and to establish the value of the articles involved.

A - Do you need to have records of your medical bills, consultations and other items when you take the minimum standard deduction?

A - No you don't. The minimum standard deduction, like the 10% standard deduction, makes it unnecessary for taxpayers to itemize or substantiate deductions.

Q - Where should I mail my return?

A - Instructions for mailing returns are given in the 1040 instruction booklet. You will find the proper address listed there.

BY ROSEMARY
Like a new dress or a comfortable pair of slippers, furniture is bought with feeling and should be designed that way, according to a group of artists who are having some of their unusual household creations exhibited in a New York museum. The result is fantasy furniture that turns out looking like a hand or rabbit or figure of a man or anything else that will give it a personal identity. Furniture, they say, must be freed from the current limits of utilitarianism, precisely because it is an extension of human feeling (invested in with hopes, fears and love).

NOTICE!!! CHANGE IN STORE HOURS

Due to illness I find it necessary to make a change in my store hours. I wish to thank all my friends for being so kind and thoughtful of me while I was a patient at the Nicholas Co. Hospital. Your flowers, cards, and gifts were appreciated. I also wish to thank you for past patronage at the store and solicit your continued support.

J. E. Bradshaw

NEW STORE HOURS EFFECTIVE March 1

Daily: 8 a.m. to 8 p.m.
Saturday: 8 a.m. to 9 p.m.
Sunday: 8 a.m. to 6 p.m.

Carlisle Drug Co.

GARRETT'S FURNITURE

NATIONALLY ADVERTISED **SPRING AIR** DOES IT AGAIN! TERRIFIC SAVINGS

NOT '59' ONLY ONCE A YEAR NOT '69' ONLY

SALE

PLEASE READ

WE OFFER THESE TWO MATRESSES LAST YEAR AT SPECIAL SALE PRICES AND THE HUNDREDS OF PEOPLE WHO BOUGHT THIS YEAR SO HEAVILY PRAISED THAT WE HAVE BRID SPRING AIR TO MAKE THESE SAME TWO MATRESSES AT SALE PRICES AGAIN.

WE BELIEVE THIS IS THE LOWEST VALUE WE HAVE EVER OFFERED OUR CUSTOMERS

- HUNDREDS OF FIRM COILS - HEAVY SEAL PAD AND WHITE COTTON FIBER
- CORD HANDLES AND VENTILATORS - HEAVY DECORATOR PRINT COVER
- SMOOTH TOP - OR QUILTED FOR WEAVER SURFACE
- AVAILABLE IN QUEEN AND KING SIZES
- FAMOUS KARR INSPIRING UNIT WITH HEALTH CENTER FEATURES
- HEAVY SEAL PAD AND TWO LAYERS OF FIBRE COTTON FIBER
- CORD HANDLES AND VENTILATORS - HEAVY DECORATOR DANMARK COVER
- SMOOTH TOP OR QUILTED - AVAILABLE IN QUEEN AND KING SIZES

BY THE MAKERS OF BACK SUPPORTER - WORLD'S MOST MARVELOUS MATTRESS

THE WORLD'S MOST MARVELOUS MATTRESS SPRING AIR LUXURY CUSHION

STILL ONLY \$79.50 SALE PRICE ONLY \$59.95

Garrett's

- Dinty Moore Beef Stew 24 oz. 49¢
- Campbells Vegetable Soup 3/39¢
- Tomato Soup 4/49¢ Chicken Noodle Soup 4/49¢
- Stokely Tomato Catsup 14 oz. 2/39¢
- Stokelys Corn golden center, golden whole kernel 303 2/39¢
- Strietmanns Town House Crackers lb. 39¢
- Miolo Margarine Lb. 5/51
- Chipnics 3 6/10 oz. 39¢
- Bush's Showboat Pork & Beans 40 oz. 29¢
- Kraft Mustard 6 oz. 10¢
- Lard 50 lbs. \$8.19
- Pillsbury Brownie Mix family size 47¢

Carnation Milk tall cans 3 for 43¢

Birds Eye **Frozen Corn & Frozen Peas** 10 oz. 2 for 39¢

Stokely VAN CAMP'S Fruit Cocktail 303 5 for 89¢

C & G KY FOOD STORES

WE CARRY EVERYTHING TO KEEP YOUR HOME UP TO DATE.

Our complete stock of quality lumber makes it possible for us to meet all your building needs.

Ratliff Bros. Co.

PHONE 10 CARLISLE, KY.