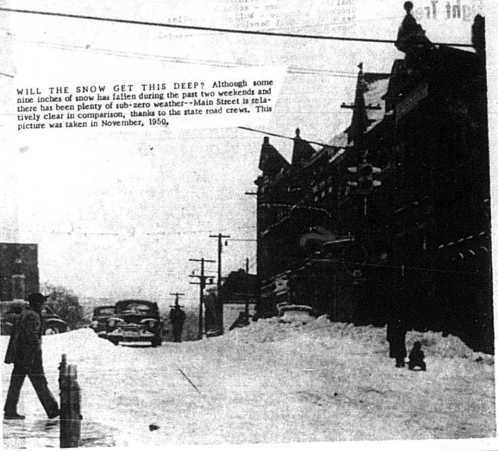


CITY OF CARLISLE PUBLIC UTILITY PROJECT  
OPERATION AND MAINTENANCE FUND OF 1965  
FINANCIAL STATEMENT FROM PAGE NINE

SEPTEMBER:

Sewer Testing & Equipment Company - supplies	85.53
Ky. Utilities Company - lights	151.35
John R. Chandler - moving	20.00
Bullfinch Bros. Company - supplies	104.60
Woody's Auto Repair Shop - repairs	144.00
Jack Randall - work	1.40
Loosan Clay Products Company - supplies	132.64
Plumbing - work	11.99
Dee Jay Auto Parts - supplies	16.50
Dee Jay Auto Parts - supplies	19.50
Howland Sheet Metal Co. - supplies	20.00
Western Auto Store - supplies	20.00
L. & N. Railroad Company - office supplies	59.77
Transvaal Printing Company - supplies	1,550.00
Water Works & Industrial Supply Co. - supplies	305.75
Flumbers Supply Company - supplies	43.40
F. B. & S. Chemical Company - supplies	19.11
Muller Company - supplies	64.39
Dorsey Bros. & Fisher - supplies	4.72
Ky. Machinery - supplies	134.40
Mid-States Meter & Supply Company - supplies	13.85
Charlie Mann's Auto Repair - repairs	202.51
Hookins Machine Shop - repairs	205.49
Badger Meter Mfg. Co. - supplies	37.50
M. C. Blair Insurance Agency - encroachment bond	851.11
Mrs. Ruth Lambert - in Kennedy Heights	1.50
Ky. Gas Transmission Corporation - gas bought	1,072.22
Berry Burnam, Co. - lease - recording fee	251.38
Ky. Gas Transmission Corporation - gas bought	
Ky. State Treasurer - Sales Tax	



WILL THE SNOW GET THIS DEEP? Although some one inches of snow has fallen during the past two weekends and there has been plenty of sub-zero weather, this lively clear in comparison, thanks to the state road crew. This picture was taken in November, 1966.

OCTOBER:

Ky. State Treasurer - 3rd quarter withholding	54.15
Internal Revenue Service - 3rd quarter withholding	642.40
Social Security Fund - 3rd quarter social security	119.93
Ky. State Treasurer - Sales Tax	275.77
Woody's Auto Repair Shop	95.49
Mid-States Meter & Supply Co. - supplies	15.73
F. B. & S. Chemical Company - supplies	11.11
Dorsey Bros. & Fisher - supplies	13.85
Labette Solar Service Station - bus charges	156.00
Comet Mfg. Corp. - supplies	1.25
Ky. Utilities Company - lights	3.64
Leon Auto Repair - repairs	20.00
Harper's Garage - supplies	122.76
Jack Randolph - work	1.00
Plumbing-Heaton R. C. - power	2,379.27
Mrs. Martha Broderick - gas right-of-way contract	33.00
Ky. Gas Transmission Corporation - gas bought	
Ky. State Treasurer - CB radio	

NOVEMBER:

USA Express - Freight	5.11
J. W. Randolph - labor and equipment	226.00
Ky. Utilities Company - lights	158.91
Dorsey Bros. & Fisher - supplies	79.15
Field & Vice Builders Supply - supplies	12.13
Fred Jones - balloting	1.17
Labette Chemical Products Co. - supplies	1.17
Charlie Mann's Auto Repair - repairs	1.17
Duncan Electric Shop - repairs	1.17
Power Line Construction Company - supplies	1.17
Comet Manufacturing Corporation	251.11
Highway Drainage Pipe, Inc. - supplies	1,312.11
Woody's Auto Repair Shop - repairs	127.31
Raych E. Carter - supplies	84.91
Dee Jay Auto Parts - repairs	15.12
Scanlon-Turner Enterprises - freight charges	4.30
F. B. & S. Chemical Co. - supplies	168.57
Transvaal Printing Company - office supplies	30.00
Badger Meter Mfg. Co. - supplies	10.00
Orie Holden - supplies	10.00
Mid-States Meter & Supply Co. - supplies	201.48
Flumbers Supply Company - supplies	260.51
Ky. State Treasurer - 3% Sales Tax	15.00
Mary Bell Sawyer - pledge refund	

DECEMBER:

Pansy Tomlinson - pledge refund	20.00
Brooks Hanson - mileage to Lexington	34.00
Olliver Vice - mileage to Lexington	34.00
Clarence Baughn - mileage to Lexington	139.96
Ky. Utilities Company - lights	280.55
J. W. Randolph - balloting	76.59
Dorsey Bros. & Fisher - supplies	13.85
F. B. & S. Chemical Company - supplies	320.11
Mid-States Meter & Supply Co. - supplies	222.88
Jay R. Harris, Inc. - supplies	40.00
Highway Drainage Pipe, Inc. - supplies	40.00
Hookins Machine Shop - repairs	40.00
Caroline Porcary - printing and advertising	26.36
Sewer Testing & Equipment Company - supplies	159.13
Blending-Heaton R. C. - power	105.00
Hill Burleson - labor	756.48
American Meter Co. - supplies	31.55
Brewers Concrete Products Co. - supplies	15.00
Sargent-Sowell, Inc. - supplies	4.68
Exhale-Downe Firmness - freight charges	15.00
Comet Manufacturing Corp. - supplies	27.07
Harper's Garage - supplies	14.00
Ky. Gas Transmission Corporation - gas bought	9,451.00
Ky. State Treasurer - 3% Sales Tax	392.11
Way F. Springer, Jr. - reimbursement for medicine	40.00
Postmaster - postal cards	400.00

CITY OF CARLISLE BONDS OF 1964 REDEMPTION FUND

JANUARY:	
Firm National Bank - Bonds and Interest	4,120.00
Firm National Bank - Bonds and Interest	2,860.00
Firm National Bank - Bonds and Interest	1,630.00
Firm National Bank - Bonds and Interest	1,630.00
Firm National Bank - Bonds and Interest	1,630.00
MARCH:	
Firm National Bank - Bonds and Interest	1,630.00
Utility Project Reserve Fund - transfer	3,172.50

CITY OF CARLISLE PUBLIC UTILITY PROJECT  
RESERVE FUND OF 1965

JANUARY:	
City of Carlisle Public Utility Project Bond & Interest	2,499.00
Redemption Fund of 1963 - monthly transfer	400.00
Utility Project Reserve Fund - monthly transfer	1,000.00
City of Carlisle Public Utility Project Operation and Maintenance Fund of 1965 - monthly transfer	11,445.76

FEBRUARY:

City of Carlisle Public Utility Project Bond & Interest	2,499.00
Redemption Fund of 1963 - monthly transfer	550.20
Utility Project Reserve Fund - monthly transfer	400.00
City of Carlisle Public Utility Project Operation and Maintenance Fund of 1965 - monthly transfer	16,857.05

APRIL:

City of Carlisle Public Utility Project Bond and Interest	2,499.00
Redemption Fund of 1963 - monthly transfer	550.20
Utility Project Reserve Fund - monthly transfer	400.00
City of Carlisle Public Utility Project Operation and Maintenance Fund of 1965 - monthly transfer	17,387.38

MAY:

City of Carlisle Public Utility Project Bond and Interest	2,499.00
Redemption Fund of 1963 - monthly transfer	550.20
Utility Project Reserve Fund - monthly transfer	400.00
City of Carlisle Public Utility Project Operation and Maintenance Fund of 1965 - monthly transfer	19,042.78

JUNE:

City of Carlisle Public Utility Project Bond and Interest	2,499.00
Redemption Fund of 1963 - monthly transfer	550.20
Utility Project Reserve Fund - monthly transfer	400.00
City of Carlisle Public Utility Project Operation and Maintenance Fund of 1965 - monthly transfer	15,553.52

JULY:

City of Carlisle Public Utility Project Bond and Interest	2,499.00
Redemption Fund of 1963 - monthly transfer	550.20
Utility Project Reserve Fund - monthly transfer	400.00
City of Carlisle Public Utility Project Operation and Maintenance Fund of 1965 - monthly transfer	10,430.08

AUGUST:

City of Carlisle Public Utility Project Bond and Interest	2,499.00
Redemption Fund of 1963 - monthly transfer	550.20
Utility Project Reserve Fund - monthly transfer	400.00
City of Carlisle Public Utility Project Operation and Maintenance Fund of 1965 - monthly transfer	7,439.64

SEPTEMBER:

City of Carlisle Public Utility Project Bond and Interest	2,499.00
Redemption Fund of 1963 - monthly transfer	550.20
Utility Project Reserve Fund - monthly transfer	400.00
City of Carlisle Public Utility Project Operation and Maintenance Fund of 1965 - monthly transfer	6,601.78

OCTOBER:

City of Carlisle Public Utility Project Bond and Interest	2,499.00
Redemption Fund of 1963 - monthly transfer	550.20
Utility Project Reserve Fund - monthly transfer	400.00
City of Carlisle Public Utility Project Operation and Maintenance Fund of 1965 - monthly transfer	6,344.03

NOVEMBER:

City of Carlisle Public Utility Project Bond and Interest	2,499.00
Redemption Fund of 1963 - monthly transfer	550.20
Utility Project Reserve Fund - monthly transfer	400.00
City of Carlisle Public Utility Project Operation and Maintenance Fund of 1965 - monthly transfer	5,851.26

DECEMBER:

City of Carlisle Public Utility Project Bond and Interest	2,499.00
Redemption Fund of 1963 - monthly transfer	550.20
Utility Project Reserve Fund - monthly transfer	400.00
City of Carlisle Public Utility Project Operation and Maintenance Fund of 1965 - monthly transfer	9,120.93

CITY OF CARLISLE PUBLIC UTILITY PROJECT  
BOND AND INTEREST REDEMPTION FUND OF 1963

JANUARY:	
Firm National Bank - Interest	10,227.25
Firm National Bank - Interest	111.00
Firm National Bank - Interest	10,532.25
Firm National Bank - Interest	34.00
Firm National Bank - Interest	57.00

JANUARY:

City of Carlisle Public Utility Project Bond & Interest	2,499.00
Redemption Fund of 1963 - monthly transfer	550.20
Utility Project Reserve Fund - monthly transfer	400.00
City of Carlisle Public Utility Project Operation and Maintenance Fund of 1965 - monthly transfer	17,086.32

FEBRUARY:

City of Carlisle Public Utility Project Bond & Interest	2,499.00
Redemption Fund of 1963 - monthly transfer	550.20
Utility Project Reserve Fund - monthly transfer	400.00
City of Carlisle Public Utility Project Operation and Maintenance Fund of 1965 - monthly transfer	17,086.32

MARCH:

City of Carlisle Public Utility Project Bond & Interest	2,499.00
Redemption Fund of 1963 - monthly transfer	550.20
Utility Project Reserve Fund - monthly transfer	400.00
City of Carlisle Public Utility Project Operation and Maintenance Fund of 1965 - monthly transfer	17,086.32

APRIL:

City of Carlisle Public Utility Project Bond & Interest	2,499.00
Redemption Fund of 1963 - monthly transfer	550.20
Utility Project Reserve Fund - monthly transfer	400.00
City of Carlisle Public Utility Project Operation and Maintenance Fund of 1965 - monthly transfer	17,086.32

MAY:

City of Carlisle Public Utility Project Bond & Interest	2,499.00
Redemption Fund of 1963 - monthly transfer	550.20
Utility Project Reserve Fund - monthly transfer	400.00
City of Carlisle Public Utility Project Operation and Maintenance Fund of 1965 - monthly transfer	17,086.32

LOWER PRICES! HIGHER QUALITY! BETTER SERVICE!  
BETTER FOOD BUYS EVERY DAY!

Ground Beef lb. 49¢  
Ground Chuck lb. 69¢  
Shoulder Roast lb. 55¢  
Stew Beef lb. 79¢  
Sausage 2 lb. Bag \$1.39

Chuck Steaks lb. 69¢  
Bacon lb. 79¢  
Fruit Cocktail 303 4/\$1  
Hominy #2 2/25¢  
Shredded Kraut 303 2/29¢  
Honey Pod Peas 303 5/\$1  
Tomato Catsup 14 oz. 5/\$1  
Ping 46 oz. 4/\$1  
Pong 46 oz. 3/\$1  
Beans cut green or shellies 303 5/\$1  
Apple Sauce 303 6/\$1

WISH-BONE ITALIAN DRESSING .37¢  
FRENCH DRESSING .33¢  
Stokely's FINEST

Potatoes Wis. Russett 20 lbs. 65¢  
Yams 3 lbs. 25¢  
Oranges 5 lbs. 45¢  
Sta-Puf Rinse 100% label 1/2 gal. 79¢

Northern Towels twin pak reg. w/ac 2/69¢  
jumbo roll 2/49¢  
Facial Tissue 100 2 ply 2/25¢  
Napkins 80 ct. box 2/25¢  
Van Camp Pork & Beans 300 4 - 59¢  
Van Camp Beanee Weenees 21¢

Pillsbury Cake Mixes 3/89¢  
Frostings 3/89¢  
School Days Peas 303 6 - 51¢  
Stokely's COUNTRY CORN GENTLEMAN CORN 303 size 4 for 89¢

Stokely's TOMATO JUICE 46 oz. 29¢  
C & G KEY FOOD STORES

Stokely Beans cut green or shellies 2 1/2 can 4 for \$1

Myers Eastern's Registration Began Feb. 2

by Rena Crawford and Rosalee Kinner agents  
Mrs. Rena Crawford and Rosalee Kinner agents...  
Mrs. Florie George has been very sick but is better at this writing...  
Order of registration will be at intervals of one-half hour or one hour, from Wednesday morning through Friday afternoon...  
Classes begin on Monday, Feb. 7.

424 INTERNATIONAL  
with swept-back styling, low profile and shortest turning radius

- Hi "2-Way Sensing" Draft Control Hitch
- Deluxe Adjustable Big Comfort Seat; Lights
- Traction Boosting Differential Lock
- 8 Forward, 2 Reverse Speeds
- Extra Short Turning Radius; 8'6"
- 36 H.P.
- 3 point Hitch
- Live PTO

Buntin's FORAGE EXTENDER  
FREE OFFER For Farmers RUNNING LOW ON FORAGE

Running low on hay, silage, pasture? Buy 20 bags of Southern States FORAGE EXTENDER Feed... get one bag free! Now's the time to stock up on this 12% protein feed that stretches and replaces scarce forage and economically supplies the nutrients cattle and sheep need to make milk, meat or wool profitably. Offer is good through February 28th only.

SOUTHERN STATES  
Carlisle Cooperative  
Phone 87 Carlisle  
Your Southern States Cooperative Agency