

Will The Rabbits

Continued from page 1  
a unique and previously unexperienced procedure.  
Happy blackberrying, folks.

Christmas Mailing

Continued from page 1  
wrappers. A slip enclosed who names and addresses of sender and addressee recommended. One clear address is sufficient, not all sides. The right with strong color. If these rules are observed almost any article may arrive in perfect condition.  
Rural patrons are required to stamp all outgoing mail left in the box for pickup by the carrier during the month of December. Patron service by city delivery carriers is required to deliver mailings either at the post office or by collection boxes and not leave them for carriers to pick up during this period.

Advance Feed, Grain Payments

Advance payments to farmers participating in the feed grain program will be continued in 1967, USDA announced.  
In past, advances were made only from diversion payments.  
Since diversion payments are being authorized only on small farms in 1967, 50 percent of price-support payment may be advanced to small farms. On small farms, 50 percent of both diversion and price-support payments may be advanced.  
To obtain advance payment, farmer applies for it at time he signs up to participate in program. Dates for signing in 1967 have not been set but will be announced well before planting time. Advance payments are an important source of capital for farming operation.  
Price-support payments for corn computed rate of 30 cents a bushel times farm's projected yield in 50 percent of farm's base acreage for corn. For grain sorghum, calculation is same except rate is 53 cents per hundredweight. Projected yields will average a little higher nationally in 1967 than in 1966. Diversion payments for small farms—farms with

True Value Of Property A Problem

Frankfort—Arriving at the true value of property sold after January, 1968, will be a tax assessment problem for Kentucky unless needed legislative enactments by the General Assembly.  
This was pointed out in a report released this week by the Legislative Research Commission.  
The report points out two facts make imperative the gathering of adequate information on real property values: 1) The 1965 court of appeals ruling on assessing property at the full cash value. 2) The expiration, on January 1, 1968, of the federal stamp tax which furnished a basis for estimating the sales price of real property.  
The report, Real Property Sales Information, was directed by the 1966 General Assembly after it passed the General Assembly bill on the general subject introduced last in the session.

James T. Fleming, Director of IRC, said he felt the General Assembly would act to fill this void in tax information.  
Fleming said, "An report concluded that some state action is necessary to obtain the information that no longer will be available with the expiration of the federal tax stamp.  
He said, "Such Kentucky legislative action should be taken in the 1968 Session, or in a special session prior to January 1, 1968.  
Fleming said, "Kentucky is caught in a bind on this federal repeal of the stamp tax, just as we are on daylight savings time."  
Kentucky is one of only three states which do not meet in regular session in 1967.  
The report recommends that an affidavit be filed with the sales price of real property be filed with the county tax commissioner before the county clerk.  
Price-support payments for corn computed rate of 30 cents a bushel times farm's projected yield in 50 percent of farm's base acreage for corn. For grain sorghum, calculation is same except rate is 53 cents per hundredweight. Projected yields will average a little higher nationally in 1967 than in 1966. Diversion payments for small farms—farms with

Have You Signed Up For Medicare

By Hugh A. McNary, District Manager  
With the advent of Medicare, it is more important than ever that a proper approach to the proper age to sign up for his health insurance protection and for any monthly benefits he may be coming. Mr. Hugh McNary, District Manager of Social Security in Lexington, Ky., explained today, that even if a person plans to work beyond age 65, he should make application to obtain his eligibility under Medicare sometime in the three months before the month he is 65. A delay can mean a loss of protection soon, bringing with them some proof of age, preferably a birth certificate or an early baptismal record. Other documents may be acceptable if these are not available. Generally speaking, the older the document, the better. For those who are at work, or for some other reason cannot come into their district offices, it is possible to start the application by getting in touch with the district office by telephone or letter. For further information write to Social Security District Office, 930 Win-



which is the other part of the Medicare program, is effective as soon as a person reaches 65. There is no specific enrollment period for this part. For anyone receiving Social Security benefits prior to age 65, hospital insurance protection will be automatic the month age 65 is reached. These people will also be notified automatically about signing up for the medical insurance. If they want that protection to supplement their hospital insurance.  
Mr. McNary suggested that people now within 3 months of their 65th birthday plan to visit the Social Security office soon, bringing with them some proof of age, preferably a birth certificate or an early baptismal record. Other documents may be acceptable if these are not available. Generally speaking, the older the document, the better. For those who are at work, or for some other reason cannot come into their district offices, it is possible to start the application by getting in touch with the district office by telephone or letter. For further information write to Social Security District Office, 930 Win-

ball Game in the Gym of Nicholas County High School on Thursday night, December 8, at 7:30 p.m. Donkey basketball is one of the funniest sports that can be imagined. There will be a game between riders mounted on donkeys, plus some trick donkey acts and a mechanical donkey race between mechanical don-

keys of steel and rubber construction.  
Plan to attend today. The FFA boys are selling advance tickets.  
See you at the Donkey Ball game tonight.

LOOK in The Mercury classified for that bargain you want

Library Notice

Since the library is in the process of moving to their new building, the Nicholas County Library Board urges all patrons to visit the present library and check out books needed over the holidays and for any monthly benefits he may be coming. Mr. Hugh McNary, District Manager of Social Security in Lexington, Ky., explained today, that even if a person plans to work beyond age 65, he should make application to obtain his eligibility under Medicare sometime in the three months before the month he is 65. A delay can mean a loss of protection soon, bringing with them some proof of age, preferably a birth certificate or an early baptismal record. Other documents may be acceptable if these are not available. Generally speaking, the older the document, the better. For those who are at work, or for some other reason cannot come into their district offices, it is possible to start the application by getting in touch with the district office by telephone or letter. For further information write to Social Security District Office, 930 Win-

IT'S NEVER TOO LATE TO GIVE FLOWERS FOR CHRISTMAS!  
Red - Pink - White - All Prices  
Price Range \$2.50 to \$15  
We have our best crop ever! PAUL MIKKELSON, MIKKELPINK, ECU WHITE.  
Select A Potted Plant For Christmas From Our Large Selection. For Yourself Or For Giving. Small's Greenhouse

MAKE IT A JEWEL YULE!  
Anson Tie Ties, Neck & Ear Ring Sets, Vintage Watches, Pin & Ear Ring Sets, Diamond Rings, Balona Watches, 1847 Rogers Bros. 3 piece Relish Sets \$3.95, Anson Identification Bracelets Boys & Girls, 14 kt. Gold Pierced Ears, Teicot O Flex Spindel Bands Men, women 1847 Rogers Bros. 2 piece Entertainment Sets \$4.95 silver plate  
Sims Jewelry

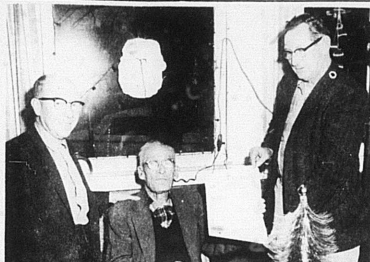
YOU ARE INVITED  
Bring Your Tobacco To The Paris Tobacco Market  
Sell On A Market Operated By Farmers For Farmers  
Two Companies To Serve You.  
Leaders Of The Past And For The Future  
THE FARMERS THE PARIS  
EAST MAIN STREET PHONE 987-7100 SOUTH MAIN STREET PHONE 967-3388  
A Division of Central District  
Call Collect (or Just Haul) Each Company Selling Every Day.  
Stay Tuned To Radio WPDE 1440 8:30---10:05 --- 12:25 ---4:30  
CONSISTENTLY A LEADING MARKET.

for GIRLS and BOYS!  
MORRISON'S

Microfilm Center tbn. Margaret I. King Library  
University of Kentucky  
Lexington, Ky. 40506

The Carlisle Mercury

VOLUME 99 NUMBER 50 ESTABLISHED 1867 CARLISLE, KENTUCKY 40311 DECEMBER 15, 1966 10 PAGES PRICE 10c



Fun For Old and Young, See Winnie-the-Pooh

Most Important Man in Kentucky Today—Dec. 8  
Charles Ewell, of Broadway, who was 93 years old on Dec. 5, presented the Kentucky Colonel Commission from Governor Edward T. Breathitt, and to which he stated "I am the most important man in Kentucky today." Several of Mr. Ewell's friends enjoyed the cream and cake with him at his birthday restaurant as he unwrapped additional gifts that had been given him, but probably the best time was had by Mr. Ewell himself, who, even though he may be approaching the century mark, still retains a very keen sense of wit and humor with which he entertained his friends very highly at his birthday party.

Bachelors Aplenty In Nicholas County  
(Special to The Mercury)  
NEW YORK, Dec. 7.—Memo to single women everywhere —Nicholas County is loaded with unmarried men.  
The surplus is such that there are 144 single men in the local area for every 100 single women.  
By way of comparison, the ratio in other parts of the United States is 124, and in the State of Kentucky, 134.  
These are the figures, based upon national statistics gathered by the Department of Commerce from all sections of the country. Considerable variations exist, as between one area and another.  
In Nicholas County, it is found, approximately 24 percent of the male population over age 14 is unmarried. Compared with 16.6 percent of the females over 14, this refers only to those who have never been married. It does not include those who have been widowed or divorced.  
Elsewhere in the United States, 25.1 percent of the men and 19.1 percent of the women in that category are single.  
In general, despite the large number of unmarried men, spinsterhood among American women is gradual-

ly vanishing, according to the Population Reference Bureau.  
Back in 1940, as many as 15 percent of the women who were in their 30's had not married. Today, less than 7 percent in that age group are unwed.  
New problems are arising, however, for marriage-minded girls. This was pointed out by Paul C. Click and Robert Parke, Jr., of the Census Bureau in a paper presented recently before the American Sociological Association convention.  
It has to do with the oncoming variations among men and women who were born during the baby boom following World War II.  
In Nicholas County, some 288 of these girls will be in the 17 to 21 age group next year; the figures show, and will be looking for husbands.  
But, because the birth rate during the war was low, the number of eligible men slightly older than themselves will not be sufficient.  
As for the local male crop in the 17 to 21 bracket, who will total 342 next year, they will not be ready for marriage then. It will be two years or more before they are and then they will be seeking girls who are younger than themselves.

Named Co-Ed Correspondent  
Miss Carolyn Trapp has been named Co-Ed Correspondent for the 1966-67 school year, according to an announcement by Miss Margaret Hauser, editor of Co-Ed Magazine. Miss Trapp, daughter of Mr. and Mrs. Harry Trapp is in the 12th grade at Nicholas County High School. Her appointment was made by Mrs. William Threlkeld and Mrs. Ralph Taylor, Home Economics teachers at Nicholas County High School.  
Selected for her qualities of leadership and her enthusiasm for home economics, Miss Trapp will serve as Junior Advisor to the editors of Co-Ed, magazine for teenage girls. She will keep them informed of activities at Nicholas County High School. More than 4,000 Co-Ed Correspondents throughout the United States and Canada report regularly.

Named Co-Ed Correspondent  
Miss Carolyn Trapp has been named Co-Ed Correspondent for the 1966-67 school year, according to an announcement by Miss Margaret Hauser, editor of Co-Ed Magazine. Miss Trapp, daughter of Mr. and Mrs. Harry Trapp is in the 12th grade at Nicholas County High School. Her appointment was made by Mrs. William Threlkeld and Mrs. Ralph Taylor, Home Economics teachers at Nicholas County High School.  
Selected for her qualities of leadership and her enthusiasm for home economics, Miss Trapp will serve as Junior Advisor to the editors of Co-Ed, magazine for teenage girls. She will keep them informed of activities at Nicholas County High School. More than 4,000 Co-Ed Correspondents throughout the United States and Canada report regularly.

\$100 Reward Is Offered

The theft of tobacco in the Stoney Creek section of Nicholas County has prompted Deputy Sheriff Emery Clark to offer a \$100 reward for information leading to the arrest and conviction of the person or persons responsible.  
Tobacco was taken from John L. Soper, Jr. and Dick Kenney, tenant, 40 sticks of heavy; from Livingston property of Mrs. Earl Hannon, 25 sticks all kinds striped; Phil Hiltz, 30 sticks ready for delivery.

Injured In Fall

From Building  
Today Shaw suffered a fractured hip and was admitted to the Good Samaritan Hospital, Lexington, after treatment at the Nicholas County Hospital here last week.  
He was injured while falling from a building under construction in Dorseyville.

Health Department Closed For Christmas

The Health Department office will be closed for Christmas vacation from Friday, Dec. 23 through Monday, Dec. 26. Office will open Tuesday, Dec. 27 at 8 a.m.

A Reminder  
Members of the Hilar and Rabbit Club are requested to pay their dues by Friday, Dec. 16, if they wish to attend the Peter Pan-er dance on Dec. 30.

JC Net League Coaches, Teams, Players Are Revealed

Hooby Anderson announced the Carlisle Net League coaches and players listing for the 1966-67 season.  
MARRIAGE COACHES: R. Taylor and J. Soper, Hospital, Jackie Kenny, Sully Deane, Sam Stimpert, Eddie Gratzel, J. L. Soper, H. L. Norval, Harry Hughes, Joe Baker, and David W. Hardin.  
RAIDERS COACHES: R. Anderson and H. Darbo, Players: Tommy Darrell, William N. Young, Bill Darrell Snapp, Earl D. Finch, Mike Finch, Doug Darbo, Proctor Hails, Sam Wilson, Jerry Seay, Everett Alan Dale, David Snapp, and Kenneth Hoot.  
CASERS COACHES: Chas. Carter and D. Zachary, Players: Charles Jolly, Bobby Kelly, Larry Cartwright, Doug Fryman, Eddie Hington, Charles Cudde, Raymond Campbell, Bruce Carter, Wallace Edwards, and Bob Harper III.  
TIGERS COACHES: R. Williams, Harry Players: Billy Allison, Pat Conley, Victor Hrum, Joe H. Wilson, Larry Minton, John W. Hunt, Wayne Hays, Ricky Hicks, Glen Morrison and Jeff Ross.  
DEMONS COACH: John Vickers; Players: Danny Berry, Gregory O'Bannon, Bruce Falter, Dick Bess, Danny Bealter, Phillip Bowers, Bruce Morrison, Ricky Broderick, Paul Vickers, and Joey Randall Beyer.

DEEDS RECORDED

Mrs. Mae Berry, 3 acres more or less on Highway 32 to William C. Sims and wife.  
Mrs. Earl Hannon, the property at the intersection of Highway 32 and the new Streets to Earl Hannon, Earl Hannon and wife Hannon and lot on Broadway to Permelia Cameron.

FIRE ALARM

The Levithan house at Milltown was destroyed by fire Monday, December 5. The fire broke out at 7:40 p.m.

Fun For Old and Young, See Winnie-the-Pooh



Fun For Old and Young, See Winnie-the-Pooh

Nicholas County High School Speech Department will present for the public a play for Christmas. It is a very delightful story which many people have read and found fascinating. The play involves some very unusual animals in a very funny forest.  
It is Winnie-the-Pooh by A.A. Milne and has proven to be extremely hilarious to old and young alike. It will be presented at the Carlisle City School Saturday night, Dec. 17, at 8:00 p.m.

Abode and Belove—Scenes from High School Play



Abode and Belove—Scenes from High School Play

Childrens Coloring Contest Closes Friday At 5:30 P. M.

The Coloring Contest sponsored by the Carlisle merchants ends this Friday, Dec. 16, at 5:30 p.m.  
Entries will be accepted up to that time. Judging of the various entries will be completed in next week's Mercury. Winners' names will be posted at each store next week.  
Winners should identify themselves with each merchant and select their merchandise prize.

To Publish Babson's Forecast

The Carlisle Mercury will publish Babson's business and financial forecast for 1967 on Dec. 21 and Feb. 25.  
Your attention is called to this feature because it will be a year of many changes.  
This Babson forecast will contain predictions covering such important subjects as Budget, Prices or Inflation, Liquidation, Coming Tax Squeezes, Strikes, Inflation, Consumer, Looking in the War on Poverty, Price and Wage Controls, Various Securities in Stocks, Various Living Costs, Inflation, Labor at the Crossroads, Shutdowns, Inflation, Unemployment, and the Spotlight.