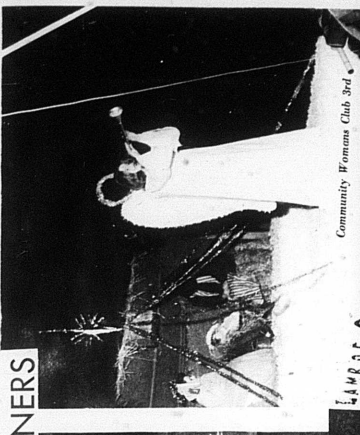


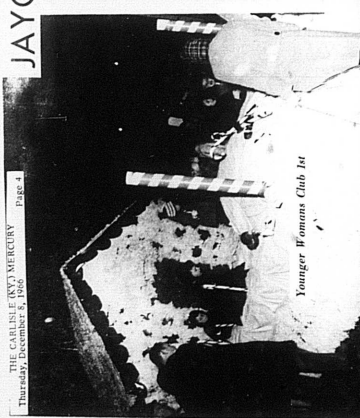
JAYCEE CHRISTMAS PARADE WINNERS



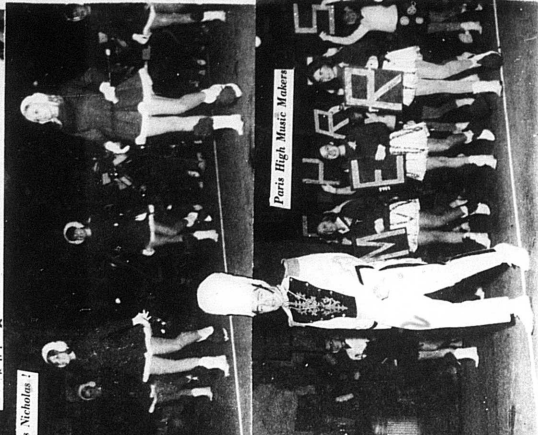
Community Women's Club 3rd



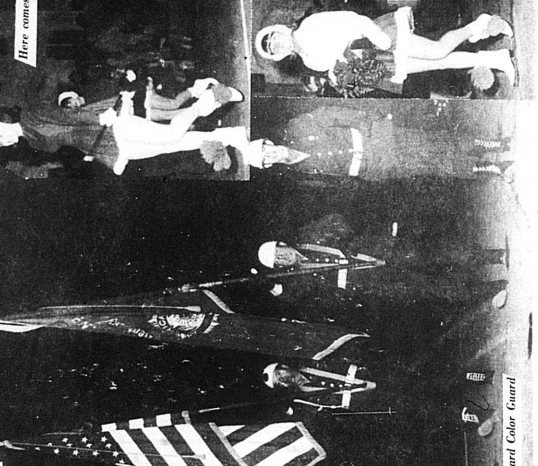
Here comes Nicholas!



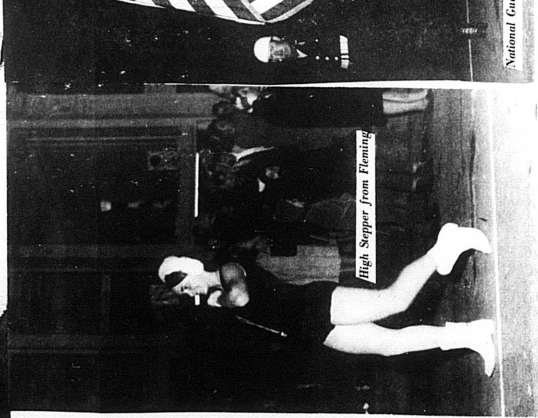
Younger Women's Club 1st



Paris High-Music Makers



National Guard Color Guard



High Stepper from Fleming

Deaths

Henry Franklin Graves, 82, a retired farmer, died at 2:20 p.m. Thursday, Dec. 1, at the Harrison Nursing Home, Lexington. Survivors are his wife, Mrs. Mollie Ann Lewis Graves, a daughter, Mrs. Edward T. Allison, Lexington; a brother, Claude Thomas, Cave City, Mo.; Jr., Leslie Carl Hughes and Raymond McCConnell.

He was a native of Nicholas County, a member of the First Baptist Church and Bourbon Lodge No. 23, I.O.O.F.

Services were conducted at 10:30 a.m. Saturday at the Hinton - Turner Funeral Home by the Rev. D. D. Shelton, burial in the Carlisle Cemetery. Officers were Mural Thomas, Cave City, Mo.; Jr., Leslie Carl Hughes and Raymond McCConnell.

**AUCTION SALES**  
**CATTLE SHEEP & HOGS**  
TUESDAY, 1 P. M.  
PRIVATE SALES DAILY  
In The Center Of The Packing Industry  
Local Representatives Phone 377  
Levell Hollar  
**Blue Grass Stockyards Co.**  
Lisle Road Phone 253,7180  
Lexington 40555 Kentucky

**USED CARS** **BIG SAVINGS**

1963 Rambler American, 4 door Sedan, 3rd, Transmission, Radio & Heater. Low Mileage.

1964 Ford 4-door Sedan, 6 cylinder, automatic transmission and heater. Good Mechanical Condition. Priced To Sell!

1965 Thunderbird, 2 door hardtop. Fully equipped-air conditioning. Sharp!

1965 Falcon-4 door Station Wagon, 6 cylinder, Automatic transmission, Radio and Heater.

1965 Mustang -V-8 engine, Radio and heater. Automatic Transmission, Excellent Condition.

1961 Chevrolet 4 door Sedan, 6 cylind. engine. Standard Transmission, Radio and heater.

1961 Ford 1 console 1 pickup Truck

1963 Chevrolet 1 1/2 Ton Truck w/Flat & Rocks. Low Mileage

1961 Ford 6 cyl. 1/2 Ton Pick Up Truck  
New Low Price on Goodyear Snow Tires

**Harper's Garage**

**We will be Open**  
**from 6 P.M. to 9 P.M.**  
**Friday night**

Register for \$19.95 value  
**Electric Hair Dryer**  
Door Prize  
Must be present to win

**10% DISCOUNT**  
FRIDAY NIGHT ONLY  
**BAKER'S**

Graves, Nicholas County, and a grandson, Edward Graves Allison, Lexington.

**Participation Grown In '67 Grain Program**

The Department of Agriculture will seek a wide participation in the 1967 feed grain program to balance supply and demand and safeguard farm income.

Freeman M. Hockensmith, Chairman, Agricultural Stabilization and Conservation State Committee, said today that widespread farmers participation will be urged for the program again next year because "fence-to-fence" planting, which could mean production of more corn and grain sorghum than is needed and could be profitably sold. With a couple of years of normal weather, feed grain producers would be back where they were in 1964 before the diversion programs were undertaken to stabilize supplies and prices.

The 1967 feed grain program, the reform, looks toward limited acreage diversion and increased expansion of production geared to needs in other words, an increase of output from about 12 to 15 million more acres without the risk of a drop in income.

Diversion payments under the 1967 program will be available to growers on "small farms" (those with feed grain bases of 25 acres or less). Farmers will be able to qualify for price-support payments and loans on their 1967 corn and grain sorghum crops by signing up to take part in the 1967 feed grain program and then diverting 20 percent of the

farm's feed grain base and meeting other general program provisions. Growers on small farms will be eligible also for diversion payments equivalent to 40 percent of the total county support loan plus price-support payment for the first 20 percent of the base acreage diverted and 50 percent of the support on any additional acres diverted, up to the total base.

For corn, the 1967 price-support loan rate has been increased from \$1 to \$1.05 per bushel, national average, and the payment rate stays at 30 cents a bushel on the projected yield of the acreage planted up to 50 percent of the base acreage. For grain sorghum, the loan is increased from \$1.52 to \$1.61 per hundredweight national average, and the payment stays at 55 cents. Loans again will be available on all corn and grain sorghum produced on

participating farms. Sign up under the 1967 feed grain program will take place early next year.

**Will You Help Us By Renewing Early?**

**For Sale**

Grocery Store-Stock of groceries and equipment, including in of concrete block. Nice-Stat-Clean. A good established business - The doctor has told the owner to quit. Located at East Union.

A rather new five room house - large size lot. Hardwood floors, two blocks from Main St. G. I. Loan that can be transferred to purchaser.

We have a good listing of farms and houses. We can help finance anything we sell.

40 acre farm - Tobacco base • 3 acre, good four room house, four barns in good condition. Priced to sell for \$6,750. Immediate possession.

**Fightmaster Real Estate Agency**



**ACTION PEOPLE**  
shop the  
**YELLOW PAGES**

Action People know how to save time, steps. In seconds they can find any product, any service they want. And tell the most convenient place to get it. Action People shop the Yellow Pages.

**REXALL TOILETRIES FOR MEN**

**OLD SPICE LIME** **OLD SPICE**

**For Your Favorite Man**

**Carlisle Drug Co.**