

**HOMEMAKERS**  
By Mrs. Kaah Grimes  
Mrs. Sherman Hill at  
a very interesting  
lesson on planning the  
decorating of your home  
and enjoying it, to Parks  
Homemakers Club at the  
home of Mrs. Emory  
Clark on Thursday, Oct.  
7. She stressed impor-  
tant things to consider  
when re-decorating. They  
are size of rooms, heights  
of ceilings, number of  
openings and condition of  
plaster. Then, too, differ-  
ent phases of family life  
are to be considered and  
their effect on house. Such  
as—family with small  
children, one with teen-  
agers, retired family, or  
person who lives alone.  
Roll call was answered  
by each member present-  
ing a dried flower for an  
arrangement. An inspir-  
ing devotionals was given  
by Mrs. Hill using as  
her topic "God Knows  
No Partiality"—Scripture  
was Romans 2. Mrs.  
Warner Lowe gave a re-  
port on Council meeting  
she had attended in ab-  
sence of president, Mrs.  
Rabel Williams.  
During the business  
meeting, the president  
asked club members to  
investigate a needy family  
as our project for Christ-  
mas. During recreation  
hour Secret Friends were  
revealed and new names  
were drawn.  
The Club was pleased

LET A WANT AD  
WORK FOR YOU!

Service your TV or Radio.  
Cable TV—Call  
for a FREE Estimate  
**DUNCAN'S**  
ELECTRICAL SHOP

GET THE BEST FOR LESS!  
**LUMBER**  
and BUILDING SUPPLIES

WE CARRY EVERYTHING TO  
KEEP YOUR HOME  
UP TO DATE.

Our complete stock of quality  
lumber makes it possible for us  
to meet all your building needs.

**Ratliff Bros. Co.**

PHONE 10 CARLISLE, KY.

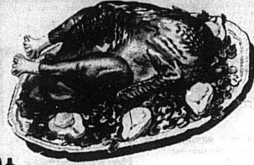
**Mr. Farmer**  
Now Available  
To Serve  
YOU.

Lime and fertilizer spreading  
service. We have equipment and  
material. See Jewell Vice or

Lester Green  
**Reid Vice & Green**  
PHONE 805

**CASH SAVINGS on QUALITY FOODS**

**BAKING HENS** Fresh **lb. 29c**  
**Lamb Fries** **lb. 99c**  
**Smoked Picnics** Whole **lb. 39c** Sliced **lb. 43c**  
**Bacon** **lb. 69c** Thick Slice **2 lbs. \$1.37**



**Hormel Vienna Sausage** 4 oz. 2 - 45c  
**Hormel Spam** 12 oz. 49c  
**Hormel Puffed Meat** 3 oz. 49c  
**Betty Crocker Ginger Bread Mix** 4 1/2 off label 27c  
**Betty Crocker Date Bar Mix** 3 1/2 off label 36c  
**Hi C Orange & Grape Drink** 1 1/2 3 - 89c  
**Nabisco Chocolate Chip Cookies** 1 1/2 45c

**Planters Peanut Butter** 18 oz. jar 59c  
**Chase & Sanborn Coffee** - 69c  
**Chase & Sanborn Coffee** Instant 10 oz. jar \$1.19  
**Northern Toilet Tissue** 4 roll pak 35c  
**Northern Towels** white and assorted jumbo 4 - 51c  
**Nabisco Premium Crackers** - 31c

**Golden Ripe Bananas** **lb. 10c**  
**Turnips** **lb. 10c**  
**Jonathan Apples** 4 lb. bag 39c  
**Wilson's Milk** 14 1/2 oz. tall 3 - 43c  
**Twin Pet Dog Food** 6 - 39c  
**Mammy's Biscuits** 6 - 39c  
**Zesta Crackers** - 31c  
**Dinty Moore Beef Stew** 24 oz. 49c  
**Gorton's Frozen Cooked Fish Sticks** Breaded - 69c  
**Gorton's Frozen Ocean Perch** - 51c

VALUABLE COUPON  
WITH PURCHASE OF  
2 BOTTLES OF  
14 OZ. SIZE  
**HEINZ KETCHUP**  
AT Crockett & Gasco  
OFFER EXPIRES: Oct. 14, 1965  
GOOD DINING WITH THIS COUPON

7c off

**2 for 39c**  
**Roman Cleanser Bleach** 1/2 gal. 25c  
**Niagra Instant Starch** 12 oz. 25c  
**Oxydol** giant 81c  
**Camay Bath Soap** 2 for 33c  
**Downy Fabric Softener** reg. 49c  
**Joy Liquid** giant 63c  
**Mr. Clean** giant 69c



**4 for 69c**

**C & G**  
**KEY**  
FOOD STORES

**FARM BUREAU in Action**  
Continued from Page 3  
resulted in lower prices a year ago. The corn farmer got lower prices for his 1964 production than he normally would have received in a drought year.  
Who paid for Secretary of Labor Wirtz's adamant refusal to permit entry of needed seasonal foreign labor in the fruit and vegetable fields? The ordinary farmer paid a good share of the price

in restricted production or crop spoilage, but the consumer also paid in the form of higher prices. Administration leaders who pushed the wheat certificate plan through despite the expressed wishes of producers are not concerned about who is paying the bill for this package of blunders. They told the consumer he wouldn't have to pay for it, but he did through higher bread prices. And what producers have not been happy about what they got out of it.  
Actually, government planners have a fine time gambling with your money. If they lose, you pay, and they have been losing quite frequently of late.

In harmful quantities as a residue on the crop in the spring. The U. S. Food and Drug Administration and the U. S. Department of Agriculture have banned this insecticide for any use on alfalfa because of the residue problem.  
Hepachlor residue will appear in the milk of dairy animals, and in the meat of beef animals for any other livestock fed alfalfa feeds treated with Hepachlor.  
Dr. Miller pointed out that farmers who misuse Hepachlor in such manner are liable for corrective action.  
The alfalfa weevil should be controlled in the spring, primarily on the first cutting, with one of these materials: Guthion, Parathion, Methoxychlor, Dieldrin, Alfox, combination of Methoxychlor and Dieldrin or Malathion. These are the only insecticides presently registered (clear- ed for use) on alfalfa for the 1966 growing season" Dr. Miller says.

RENEW YOUR SUBSCRIPTION TODAY!

**10c SAVE 10c - SAVE 10c 10c**  
**SAVE 10c**  
THIS COUPON WORTH 10c ON A PURCHASE OF A SIX-BOTTLE CARTON OF 12 OZ. MOUNTAIN DEW.  
Present this coupon plus usual bottle deposit or bottle exchange to your dealer who displays Mountain Dew. Offer expires Nov. 30, 1965.  
Mr. Dealer: Our customers will redeem this coupon for 10c. Offer limited to territories served by the Pepsi-Cola Bottling Company of Ripley, Ohio, Inc. (Cash value 1/20 of 1c.)  
**10c SAVE 10c - SAVE 10c 10c**

**NEW POLLENEX**  
**Deep Heat Massager**  
Penetrating infra-red heat and massage for quick, temporary relief of minor pains often associated with:  
**Neuralgia, Sinusitis, Headache**  
We Have Hearing Aid Batteries Now!  
MAKE US YOUR BATTERY HEADQUARTERS  
**Hopkins Drug Co.**  
Phone 18 Carlisle

**Get More**  
More Grazing → More Green Manure  
with Southern States Rye Seed  
That's because Southern States Rye Seed is true to variety. You avoid unwanted varieties in your fields like Common Rye, an inferior variety that cuts yields because it grows slower and shorter. You get only top varieties that produce maximum feeding and green manure. High germination, high purity, top guarantee too.  
SOUTHERN STATES  
**Carlisle Cooperative**  
PHONE 87 CARLISLE, KY.  
Your Southern States Cooperative Agency

**NOW ALL YOU CITY COZINS KIN ENJOY MOUNTAIN DEW!**

Yep... now all you city fallers 'n gals kin stomp right on down to yore fav'rit store for a bottle of dee-lish-ush MOUNTAIN DEW anytime you takes a fancy to!

**Mountain Dew**  
Bottled under the authority of The Tip Corp. of America  
**AT YORE FAV'KIT STORE!**