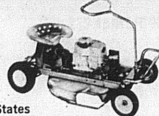


Eigh Grade Chapel Program
by DANA COATNEY
On May 5 the Carlisle Elementary School was entertained by the eighth grade, which is made up of 125 students. The theme of the play was "Memories". Section I had the mon-

Your Best Buy is a Southern States Mower

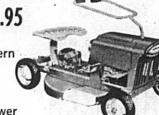
Only **112.50**



For Southern States
3 1/2 HP 25" Riding Mower

Save money, save work. 3 1/2 HP Clinton engine. Easy recoil starter. Chrome handle and bumper. 14 gauge deep steel deck. Even-spreading side discharge. Heavy-duty transmission with forward, neutral and reverse. No. 50-30.

Only **169.95**



For Southern States
Deluxe
4 HP
Riding Mower

4 HP Briggs & Stratton engine. Easy recoil starter. Heavier 13-gauge deep steel deck. Contoured for clean, non-clogging discharge. Safety clutch—automatically stops propulsion when foot pedal is released. No. 135-340-015.

Shown here, just two of many high-performing Southern States Mowers. See them all!

Carlisle Cooperative
CARLISLE, KY. PHONE 87
Your Southern States Cooperative Agency

GO FOR THE LONG HAUL... TAKE IT OUT ON DODGE!



FOR 5 YEARS OR 50,000 MILES

Pack it up. Stack it full. Give it the gun. Get under way. For the short haul or long — a Dodge-built truck can take it right and day. The toughest worker on wheels. And backed up to prove it: with a 5-year or 50,000-mile warranty* on the engine and drive train. Isn't that what makes a good investment a better investment? Tough Dodge trucks deliver the goods and keep coming back for more. Price's higher? Not a bit. The Dodge Truck Boys make 'em as easy to buy as they are to drive.

SEEKS HOW THIS WARRANTY COVERAGE PROTECTS YOU: Chrysler Corporation backs up its Dodge trucks with a 5-year or 50,000-mile warranty on the engine and drive train. This warranty covers the engine and drive train for 5 years or 50,000 miles, whichever comes first. It covers the engine, drive train, and all related parts, such as belts, hoses, pumps, and gears. It also covers the transmission, rear axle, and drive shaft. This warranty is the most comprehensive in the industry. It covers the engine and drive train for 5 years or 50,000 miles, whichever comes first. It covers the engine, drive train, and all related parts, such as belts, hoses, pumps, and gears. It also covers the transmission, rear axle, and drive shaft. This warranty is the most comprehensive in the industry.

Buntin's Garage,
Elm & Market
Carlisle, Kentucky



the September, November and April. Section II had June, March and May. Section III had December, January and February. Section IV had July, August and October.

The introductions to the play were given by Gary Crawford, after that the entire eighth grade sang "Memories". In January, speaker was Diana Bromagen and the song, "Auld Lang Syne," was "Auld Lang Syne." February - Lottie McNabb introduced the month in picture frames were Arlene Hutchinson and Kenneth Cobb. Duet was sang by Joyce McDonald and Charles Watkins. The song was "Let Me Call You Sweetheart".

March: Announcer, Joe Burden. Song, "Wearing Of The Green", and the Leprechaun was Herbert Booth.

April: Announcer, Nola Bromagen. Song, "Easter Parade", and a few of the girls had a hat display. May: Announcer, Gary Frederick. Mother was Pam Bussell and the soloist, John Kerns, sang "Mother". June: Announcer, Rose

Howard. The scene was a wedding. The bride was Mary Galbraith and the groom, "I Love You Truly". July: Announcer, Jim Platt. The flag holder and soldiers were Sammy Lemmon, Bobby Faye and Donnie Livingood. Song was, "It's A Grand Old Flag". August: Announcer Nevada Ives. Song, "In The Good Old Summertime". The ball players were Terry Russell and Willie Hogg. Louis Williams and Philip McDonald were playing tennis.

September: Announcer, Tommy Workman, song, "School Days". October: Announcer, Larry Bowles. Songs were "Shine On Harvest Moon" and "Hallelujah". The witch was Linda Harris.

November: Announcer, Key Marshall. The family was Tommy Ockerman, Dana Cooney, Johnny Evans and Donna Waugh. "Bless This House" was sang by Sharon Scott, Carolyn Jolly, Jackie Spencer, Vicky Mynear and Nola Bromagen.

December: The speaker was Vicki King. Song, "Silent Night" and winter scene featured Mar-

sha Soper. Nels Young announced the last song, which was "Now Is The Hour". The entire eighth grade sang this song, which concluded our program.

COUPLE INURED
A car driven by Robert Clay Ryan, Route 2, being struck the car being driven by James Mitchell, Route 2, living at 3:30 p.m. Monday on Ky. 32 two miles east of Carlisle.

The Ryan car went out of control on a slick road and struck the Mitchell car, Sheriff William Dolins said.

Mr. and Mrs. Willie Colmire, passengers in the Mitchell car, were taken to the Nicholas County Hospital with cuts around the face, given first aid and released.

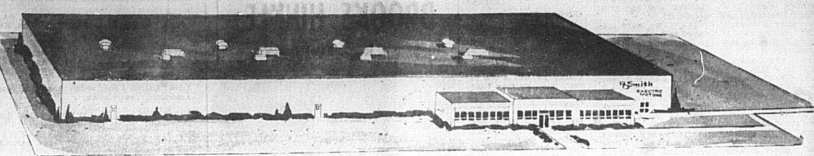
Democratic	OFFICES	Democratic	OFFICES
13 13 A Tucker Carlisle, Ky.	Justice of the Peace DISTRICT II (Vote for One)	13 13 A Frank Shapiro Carlisle, Ky.	State Senator 33rd District (Vote for One)
13 13 A Engle Carlisle, Ky.	Justice of the Peace DISTRICT III (Vote for One)	13 13 A Wilson Primer Carlisle, Ky.	State Senator 34th District (Vote for One)
13 13 A Arlson Carlisle, Ky.	Justice of the Peace DISTRICT IV (Vote for One)	13 13 A Brooks Hinkle Carlisle, Ky.	State Representative 7th District (Vote for One)
13 13 A Doyle Carlisle, Ky.	Justice of the Peace DISTRICT V (Vote for One)	13 13 A Henry Pentit Carlisle, Ky.	County Judge (Vote for One)
13 13 A Evans Carlisle, Ky.	Justice of the Peace DISTRICT VI (Vote for One)	13 13 A Hoyt Clark Carlisle, Ky.	Sheriff (Vote for One)
13 13 A Miller Carlisle, Ky.	Justice of the Peace DISTRICT VII (Vote for One)	13 13 A Yater Scheidt Carlisle, Ky.	Justice of the Peace DISTRICT I (Vote for One)
13 13 A Watkins Carlisle, Ky.	Justice of the Peace DISTRICT VIII (Vote for One)	13 13 A Elli Bible Carlisle, Ky.	Justice of the Peace DISTRICT II (Vote for One)
13 13 A Sapp Carlisle, Ky.	Carlisle City Police Judge (Vote for One)	13 13 A Mairies Compton Barnesville, Ky.	Justice of the Peace DISTRICT III (Vote for One)
13 13 A James Carlisle, Ky.		13 13 A Amund Cory Carlisle, Ky.	Justice of the Peace DISTRICT IV (Vote for One)
13 13 A Wright Carlisle, Ky.		13 13 A Jones Carlisle, Ky.	Justice of the Peace DISTRICT V (Vote for One)
13 13 A Alexander Carlisle, Ky.			Justice of the Peace DISTRICT VI (Vote for One)

SAMPLE BALLOT
 Primary Election May 25, 1965 — COUNTY OF NICHOLAS, KENTUCKY

STATE OF KENTUCKY
COUNTY OF NICHOLAS SCT

J. Berry Burnaw, Clerk of the County Court for the County and State aforesaid, certify that the foregoing is a true, complete and correct copy of the Official Ballot to be voted at the Primary Election to be held in Nicholas County, Kentucky on Tuesday, May 25th, 1965, and the names of the Candidates above listed will be arranged in the same order on the voting machines for said County.

J. Berry Burnaw
J. Berry Burnaw



WE'RE BEGINNING.....

... what will be an exciting new era for us—and we hope for the people of this area. Our new plant—THE WORLD'S FINEST, MOST MODERN FACILITY FOR MAKING ELECTRIC MOTORS—is now in operation. Most of our manufacturing equipment is in position and we've begun producing hermetic motors. (That's the kind of motor that hermetically sealed inside an air conditioning or refrigeration compressor).

HELLO.....

... to all of you whom we have not as yet had the opportunity to meet. We are looking forward to a long, pleasant relationship with you. To those of you who are already working for us or will be in the future, may we say that we believe you will enjoy working with us and are confident that you will find your job financially and personally rewarding.

THANK YOU.....

... to all of you who have made us feel at home so quickly—the service organizations, community groups, civic officials and the many, many individuals who have assisted us. Through you we have come to know the meaning of genuine southern hospitality and friendliness.

A CORDIAL INVITATION...

WE WOULD LIKE TO INVITE YOU TO VISIT WITH US ON MONDAY, MAY 24th, FROM 2 TO 7 P. M. This "Open House" will give you and your children an opportunity to tour our plant and see "firsthand" how an electric motor is made. We hope to see you Monday!



L. B. SMITH
President
A. O. Smith Corp.



JOHN H. RICHARDSON
Vice President—General Manager
Electric Motor Division



STANLEY A. SMITH
Director of Operations
Electric Motor Division



MAX R. JAMES
Plant Manager
Mt. Sterling Plant

As Smith The Motor People With NEW IDEAS!