

Thoroughbreds, Tradition, Tobacco

THE BLUEGRASS COUNTRY

THE KENTUCKY BLUEGRASS REGION, world-famous headquarters for champion horses! Here you are welcome to explore acres of blue-hued pastures, follow the miles of spanking white fences and view fastidiously-kept horse barns. Besides 250 horse farms, historic homes and sites abound. You'll want to visit Keeneland race track and the Saddlehorse Museum. Constitution Square,

where Kentucky declared its statehood, is at Danville; Fort Harrod, the white man's first permanent settlement west of the Alleghenies, is at Harrodsburg. Among many other major attractions are Lincoln Homestead State Park, near Springfield, and beautiful, meandering Herrington Lake for fishing and water sports of all kinds.



Horse Farms Are Interesting Attractions

KENTUCKY'S most famous horse farms are concentrated in the Bluegrass region within a 35-mile radius of Lexington. Maps showing exact location of farms and other points of horse interest are available through automobile clubs, the Lexington Chamber of Commerce and some service stations. Many farms are open to visitors until 4 p.m. most days.

Lincoln Homestead Has Much History, Recreation For You

NEAR SPRINGFIELD in Lincoln Homestead State Park is a replica of the cabin where Abraham Lincoln's grandfather lived and the log house where Thomas Lincoln, Abe's father, came to court Nancy Hanks. The buildings are open to the public. Golf, picnicking, and playground recreation are available at this interesting park.



Restoration Started At Shakertown

SHAKERTOWN, at Pleasant Hill, city of a famous extinct religious sect, is being restored near Harrodsburg at a cost of more than \$2 million. It will be both a tourist complex and an educational center. Shakertown was founded in 1805 when a small band of Mercer Countians embraced the Shaker doctrine of celibacy, separation from the world, confession of

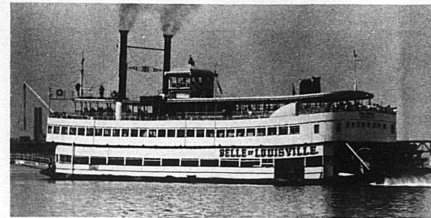
sins and communal sharing of goods. Membership grew eventually to 500 and Pleasant Hill was regarded as the most beautiful and successful of several such colonies in the United States. It gradually declined after the Civil War and in 1910 the last dozen members deeded away their remaining lands in return for care during their lifetime.

Big City, Big Bones, Boone, Battlesites

THE NORTHERN LURES

THE COUNTIES along Kentucky's northern border offer a rich variety of attractions and accommodations for the vacationer. Louisville, home of the Kentucky Derby, provides cultural delights for all Kentuckians. The mighty Ohio River is noted throughout the world for its beauty and commerce. Worth a trip to see,

it's home to big barges, sail boats, water skiing, fishing and pleasure cruises. Northern Kentucky attractions range from the big bones of mastodons near Covington to the historical heritage of Daniel Boone and Simon Kenton and to the site of one of the bloodiest battles of the Revolutionary War in the Maysville area.

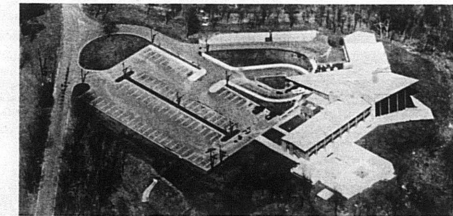


Paddlewheeler Makes Frequent Excursions

THE BELLE OF LOUISVILLE is one of the last of the exciting paddle wheel steamboats. Owned by Kentucky's Jefferson County, this romantic relic is in splendid condition and makes excursions up and down the Ohio River from Louisville. She and the bigger Delta Queen from Cincinnati highlight Louisville's Derby Festival by racing up the Ohio to Six Mile Island and back before engaging in a contest between their ear-splitting calliopes.

Vacation With Entire Family At Butler

THE COMPLETE VACATION for all the family is possible at General Butler State Park, Carrollton, where the modern 25-room lodge and dining room is headquarters for swimming (pool and beach), boating, fishing, horseback riding, tent and trailer camping, nature hikes or golf. Cottages, completely furnished, are the favorite of many. A museum of Ohio River lore is located in the Butler Mansion.



The Big Dig Is A Choice Tourist Lure

DID YOU EVER watch scientists dig for mastodon bones? At Big Bone Lick State Park, near Covington, geological explorations have unearthed the million-year-old bones of the extinct mastodon and reptiles. This park has a picnic shelter and playground. Nearby, at Falmouth, is Falmouth Lake State Park for swimming, boating, fishing, picnicking and tent and trailer camping.

Fish-rich Lake Has Boat Dock And Beach

GREENBO LAKE State Park, near Ashland, is a Northeastern Kentucky vacationland for swimming, boating, fishing, horseback riding, tent-and-trailer camping, and picnicking. This 3,300-acre park with a 225-acre lake attracts thousands of out-of-state visitors.

