

Big Lakes, Beauty, Barbecue

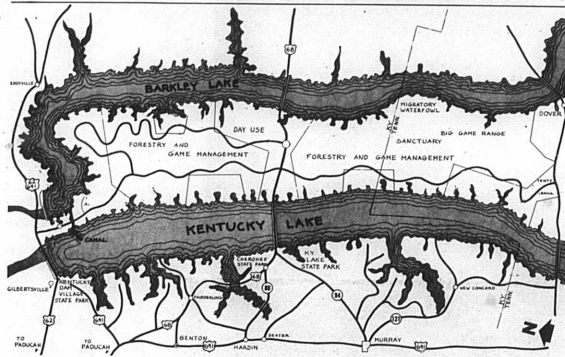
# WESTERN KENTUCKY

THREE COMPLETE vacation resort parks (Kentucky Dam Village, Kentucky Lake and Pennyville State Parks), a giant new national recreation area, numerous other attractions and scores of private boat docks, restaurants, motels and barbecue pits make Western Kentucky a mecca for mid-America's vacation-bound. Fish-rich Kentucky Lake with 2,350 miles of shoreline yields ground-dragging

strings of fish. Crappie and bass, in particular, are abundant. Besides boating, camping, fishing, picnicking, swimming in pool or by the beach, there's golf, tennis, water skiing, horseback riding, shuffleboard at the big State park in this area. Travelers reach this vacationland by plane, boat, bus or auto. There are two airports and good, new roads into the region.

## \$35 Million Project Under Development

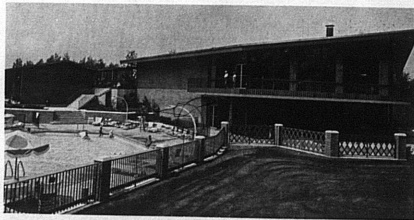
### LAND BETWEEN THE LAKES NATIONAL RECREATION AREA



COMPLETION of Barkley Lake in 1965 will give Kentucky three of the ten largest man-made lakes in the world. A 38-mile-long peninsula of 170,000 acres between Barkley and Kentucky Lakes is being developed as a National Recreation Area by the Tennessee Valley Authority, T.V.A. officials plan to develop as many different types of outdoor recreation on the peninsula as possible, including 6,000 individual camp sites. The \$35-million project is expected to draw millions of visitors per year by 1966, when most of the facilities will be completed. Barkley and Kentucky Lakes combined will have over 3,200 miles of shoreline.

### VARIETY IN WESTERN KENTUCKY

NINE OF KENTUCKY'S 34 State parks and shrines are in Western Kentucky, offering a variety package to vacationers. In 1963, Kentucky Dam Village attracted the largest single-park visitation, 2,215,605 persons; famous Kentucky Lake State Park drew 881,605 persons; and Pennyville Forest State Park at Dawson Springs - the favorite of many Kentuckians - drew 365,949 visitors. "Stars in My Crown," a drama about Western Kentucky, is presented in the Kentucky Lake Park amphitheatre.



KENTUCKY DAM VILLAGE State Park is a complete holiday resort that pleases the entire family. The 56-room Village Inn and cottage accommodations are modern and first class, the food excellent. The park has a big sandy beach, unexcelled boating, horseback riding, and some of the world's best year-round fishing. Kentucky Lake, impounded by Kentucky Dam, is the world's biggest man-made lake.

OVER 1400 ACRES of beautiful woodland and grounds at Kentucky Lake State Park provide carefree days for the year-round fisherman. In the park visitors enjoy golf, tennis, swimming in pool and lake, sunbathing, boating, horseback riding, picnicking, hiking, shuffleboard and planned recreation. Kenlake Hotel has 60 attractive guest rooms. Completely equipped vacation cottages are located in wooded areas. There are excellent privately owned motel accommodations nearby.



Hams, Hoecakes, Flourishing Farms

# THE CAVE COUNTRY

MAMMOTH CAVE, tourist attraction since 1837, is the hub of Kentucky's famous Cave Country where underground streams have carved out limestone caverns and decorated them with beautiful rock formations. Among numerous other prime attractions in this South Central Kentucky area are My Old Kentucky Home State Park, recently-completed Rough River Dam State Park

with its excellent lodge, Rough River Reservoir and Nolin Reservoir. Several privately-operated caves have good attractions and accommodations. In this region you'll find especially good Country Ham and other foods with the exacting home touch. Here, too, you'll see good farms and big fields of burley tobacco and rich historical background.

## One Of World's Spectacular Wonders

A BOAT RIDE undergound Echo River awaits you as one thrill at ever-popular Mammoth Cave National Park. On cave tours you see beautiful formations, huge cavern rooms and spectacular pits and domes. Excellent accommodations are available at Mammoth Cave and in nearby cities. Mammoth Cave is a year-round attraction, with cave temperature steady at 54 degrees at all times.



## World-Known Park Is At Bardstow

MY OLD KENTUCKY HOME is familiar to people everywhere in the world. It's a State Park and one of the top tourist attractions in America. The Bardstown area offers good accommodations year-round and has several good attractions including the outdoor drama "The Stephen Foster Story". At the park there are picnicking tables; camping facilities and golf at the nine-hole course adjacent to the park provide varied recreation for the family.

## Complete Vacation Now Possible At Rough River

ATTRACTIVE, modern architecture characterizes Kentucky's 12 new State Park lodges. At this lodge at Rough River Dam State Park, between Madisonsburg and Leitchfield, each of 24 air-conditioned units has a private patio overlooking 5,000-acre Rough River Reservoir. Other features of the park include 13 new housekeeping cottages, paved airstrip, boat docks, launching ramps, swimming beach and picnicking and camping areas.

