



QUACK, QUACK!

COMPANY—Four wild ducks, held by Ralph Shearer, Doney Watkins, Ward Jones of Dept. of Fish & Wildlife Resources, Lexington, and Harry Duncan are released at Lake Castano. They can keep four other Mallards company.

Mrs. Johnson's Chili Recipe

Recipes from throughout the country are among the many features at the U. S. Department of Agriculture's Food and Home Fair, now in Progress in Washington D. C.

These days, you can easily try recipes from another part of the country, even though they call for ingredients produced thousands of miles from where you live. USDA's home economists point out. A major reason for this is improved farming, transportation, processing, storage, and marketing—and the abundance of food by the U. S. farmer.

Among the recipes presented at the Food Fair are 80 m. favorites of the nation's First Family. Here is Mrs. Lyndon B. Johnson's recipe for Potatoes a la River chili, a typical southwestern dish. This is economical to serve right now, for beef is plentiful and inexpensive.

The recipe calls for 4 pounds chili meat—coarsely ground round steak or well-trimmed chuck meat. If specially ground, ask the man at the meat counter to use a 3/4-inch plate for coarse grind.

Place the chili meat: 1 large onion, chopped; and 2 cloves garlic in a large, heavy fry pan or Dutch oven. Cook until light-colored. Add 1 teaspoon ground oregano, 1 teaspoon coriander, 6 teaspoons chili powder (more if needed), 1 1/2 cups canned tomatoes, 2 to 4 generous dashes liquid hot pepper sauce, and 2 cups hot water. Salt to taste. Bring to boil, lower heat and simmer about 1 hour. Skim off fat during cooking.

DUNCAN'S ELECTRICAL SHOP

Service your TV or Radio. Contract Wiring—Call for a FREE Estimate

Not a electrical repair!

Bourbon Drive-In

Thurs.-Fri.

May 6-7
Champion Heaton-Yvette
Mintzies • In Color

"DIAMOND HEAD" • Plus a Teen Musical

Sat. Only
"THE THREE STOOGES GO AROUND THE WORLD IN 80 DAYS"

Also Val Brynner in "KINGS OF THE SUN"

Sun.-Mon.-Tues.
"SOLDIER IN THE RAIN"

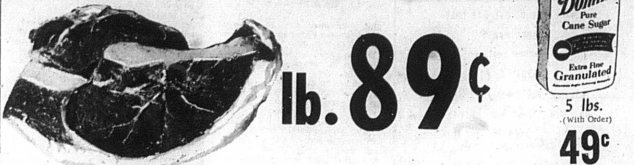
Also
A Science Fiction Feature
"DAY OF THE TRIFFIDS"

Wed.-Thurs.-Fri.
Comie Francis • Color
"FOLLOW THE BOYS"

Also
Rory Calhoun-Vm. Bendis
"THE YOUNG AND THE BRAVE"

SHOPWORTH the TENDEREST SIRLION STEAK

... in all the land!



lb. 89¢



5 lbs. (with Order) **49¢**

PORK CHOPS **33¢** lb.

CENTER CUT **59¢** lb. FIRST CUTS

Vine Ripe **Tomatoes lb. 29¢**

Lard 50 Lb. Can \$4.99

Pork Roast Rib End lb. 39¢

Birdseye **FISH STICKS 3/\$1**

BOLOGNA Morrell All Meat lb. 33¢

GREEN PEPPERS CARROTS

CUCUMBERS RADISHES

GREEN ONIONS 3 for 25¢

lb. 29¢

SMOKED PICNIC

CLOROX 1/2 gal. 39¢

400's 4 for 99¢

2 for 27¢

1 lb. strained jar 39¢

3 for 85¢

2 for 29¢

2 for 39¢

Gold Metal Salad Dressing 1 Quart 29¢

Frosty Acres Orange Juice 6 oz. 4 for \$1.00

Lite-Fluff Biscuits 6 for 39¢

Blue Bonnet Margarine lb. 29¢

Shopworth Tea 8 oz. 49¢

Folgers Coffee 2 lbs. \$1.49

Stokely 303 Can 4 for 89¢

FRUIT COCKTAIL

Stokely 303 Can 4 for 69¢

APPLE SAUCE

C & G Shopworth Milk each 10¢

YELLOW ONIONS 3 lbs. 19¢

TENNCO Grained SUPERIOR QUALITY FERTILIZER 5-10-15 Tobacco Special

GUARANTEED ANALYSIS
NITROGEN 5.0%
AVAIL. PHOS. ACID 10.0%
AVAIL. POTASH (ELEMENTAL) 15.0%

Manufactured by
TENNESSEE CORPORATION
LOCKLAND, OHIO, NEW ALBANY, IN.

Dorsey Bros. & Fisher



KINDERGARTEN NIGHT SEEING—Top picture, at left, Visiting the Carleise Post Office; at right, train ride from Lexington to Winchester on the George Washington; lower left, the Nichols County Library; lower right, inspecting the Nichols County fire truck.

SAND DUNES

Lake areas invading from the sea, coastal dunes in Europe and the eastern United States have marched across nearby farms and woods. A small village on Germany's Baltic coast was slowly buried over 30 years, then just as quietly dismantled over the next 30-year span.

But man has recently learned that coastal dunes have a definite purpose in nature's scheme—the protection of shorelines. Massachusetts law prohibits any tampering with dunes, and a massive dune rehabilitation job was undertaken by the National Park Service on North Carolina's Outer Banks in the 1930's.

Ironically, the world's most famous dune — Kill Devil Hill—has ceased to exist.

There are five general types: the beach dune; the dune ridge; the dune that forms at a right angle to the wind; the longitudinal sand dune that parallels the wind's direction; the U-shaped dune whose open end faces windward; and the baraban, the photographically ideal lunars crescent whose horns point downwind.

Most beach dunes are quartz sand. Those in Great Sands National Monument are gritty; the dunes in New Mexico's White Sands National Monument are the products of the world's largest known deposit of milkywhite powder-fine gypsum sand. In Bermuda, dunes of coral sand have cemented themselves into stone.

Village Buried Under Dunes
Dunes can be deadly

one. While the Wright Brothers were experimenting with their air machine, Kill Devil Hill was marching steadily southward at about 20 feet a year. Then, in 1929, it was permanently immobilized with woods debris, planted with grass, and tamed into graceful undulations with a series of parklike walks and drives.

Depending on height and size, dunes seem to move at roughly the same rate whatever their geographical location. North Carolina's barchans shift at the same pace of those in Africa's Libyan Desert—about 20 feet a year.

Some Remain Stable
In Africa's Sahara, however, some dunes seem not to have moved in the memory of man. Geologists suspect that these sand dunes are mantles of sand anchored some how to an irregularly contoured region of stone.

The ability of most dunes to change position fascinates geologists. For wind can't push along an entire dune. It must be done grain by grain, a corollary effect as in billiard balls. Normally, a sand grain is not lifted into the air by wind. It is bounced along by another, causing it to ricochet and hit others. Soon the dune is filled with hopping, bobbing grains of sand. But when the wind is strongest, a single bit of sand in a dune rarely travels more than three or four feet.

Geologists can reconstruct ancient wind systems from traces of dunes that have been destroyed by erosion.

It is only in recent years that man has come to appreciate sand dunes as a significant and purposeful creation of nature. The United States Government has set aside two areas—the Great Sand Dunes National Monument in Colorado and New Mexico's White Sands National Monument for permanent protection and enjoyment.

Selective Service

Q—How much time remains for Korean War veterans to get educational benefits from the Veterans Administration?

A—The educational provisions of the so-called Korean GI Bill expire for all on January 31, 1965. Thus about one year remains to take advantage of that provision.

Q—I read that a person working for the VA for more than 40 years gets the VA's award formed until 1930. Explain this.

A—Originally, there were several organizations that served veterans in various ways. One of the earliest was the Bureau of Pensions. Another was the National Home for Disabled Volunteer Soldiers. The Bureau of War Risk Insurance originally insured war-time shipping but later took over service to veterans. Several of these groups were combined into the Veterans Bureau in 1921, and this new organization was combined with the other groups to form the Veterans Administration in 1930.

Question: My classification is I-A but I am now married and have two step-children. Will this change my classification?

Answer: If you are maintaining a bona fide family relationship with your wife and stepchildren, you are now eligible for a new class.

SAND DUNES

Lake areas invading from the sea, coastal dunes in Europe and the eastern United States have marched across nearby farms and woods. A small village on Germany's Baltic coast was slowly buried over 30 years, then just as quietly dismantled over the next 30-year span.

But man has recently learned that coastal dunes have a definite purpose in nature's scheme—the protection of shorelines. Massachusetts law prohibits any tampering with dunes, and a massive dune rehabilitation job was undertaken by the National Park Service on North Carolina's Outer Banks in the 1930's.

Ironically, the world's most famous dune — Kill Devil Hill—has ceased to exist.

There are five general types: the beach dune; the dune ridge; the dune that forms at a right angle to the wind; the longitudinal sand dune that parallels the wind's direction; the U-shaped dune whose open end faces windward; and the baraban, the photographically ideal lunars crescent whose horns point downwind.

Most beach dunes are quartz sand. Those in Great Sands National Monument are gritty; the dunes in New Mexico's White Sands National Monument are the products of the world's largest known deposit of milkywhite powder-fine gypsum sand. In Bermuda, dunes of coral sand have cemented themselves into stone.

Village Buried Under Dunes
Dunes can be deadly

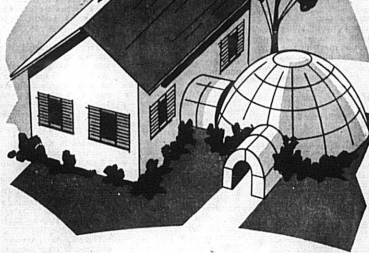
COMPLETE LUMBER AND BUILDING MATERIALS CENTER

EVERYTHING FOR HOME FIX-UP!

SEE US ABOUT
Lumber—(Utility & Construction Grade)
Doors & Windows
Millwork—Finish Boards
Acme Quality Paints
Lone Star Cement
Reinforcing Steel
Aluminum Storm Doors & Windows
Armour Fertilizer
Armorganic Plant Bed Top Dresser
Seed Corn Tuxedo Feed

SALES TOTAL
Local Representatives
LOCAL MARKET

Thousands of the Carleise Stock Yards receipts totaling 300 head and



Adding on a new room -- or an igloo?

Modern electric heating can make that new room just what you want it to be—a warm, comfortable addition to your present home—not the "igloo" that sometimes results when you put the added load of a new room on your old heating plant.

And with electric heating you're getting the advantages of individual room control, and clean, flameless heating that never requires attention or servicing.

And now with our low total electric rate, electric heating is more economical than ever before. It's an important part of the "joy of coal electric living."

So come in and have a talk with KU heating specialists. They will help you with your plans and estimate annual heating costs before you decide.

KU SYMBOL KENTUCKY UTILITIES COMPANY

an investor-owned electric company

GO FIRST CLASS ELECTRICALLY

WARMER ROOMS
EASIER MAINTENANCE
CLEAN COOKING
FRESH AIR
ROOM ROOMS
FIRE PROOF
ELECTRIC LIGHTING

STRENGTH FOR THESE DAYS

For not only believe.

If but express our belief in God in the strongest of our affirmations we will invite into our experience the full expression of God-life and overcome all trace of evil.

MR. SMITH has been making CARPETS for the home-makers of America for 15 years. The carpet he makes will fit your needs now and in the years to come. Above all—he knows that only honest value will keep a cherished treasure alive.

BUY SANDBLING — a wonderful, new all-wood surface Wilton carpet at an astonishingly low price.

ALEXANDER SMITH
Carpets and Rugs
Garrett Furniture



AUCTION SALES
CATTLE, SHEEP & HOGS
TUESDAY & WEDNESDAY, 1 P.M.

PRIVATE SALES DAILY

(In the Center Of The Packing Industry)

Local Representatives
BLUE GRASS STOCKYARDS CO.
Phone 3-0181, 3-0789 LISLE ROAD, Lexington, Ky.

IBM AUTOMATION COURSES OFFERED

Summer Courses Now Forming

Fugazzi Business College, Lexington, Ky., is scheduling day and evening classes in IBM Automation and Data Processing. These classes will be held in Lexington.

Interested men and women, including recent high school graduates, are invited to call collect (or write) The Dean of Admissions, Fugazzi Business College, 251 East High Street, Lexington, Ky. Telephone 252-8033.

REID, VICE & GREEN

Big. Materials & Armour Fertilizer Phone 808
SOUTH BROADWAY IN OLD FARM STORE BLDG.
SEE LESTER GREEN or JEWEL VICE