

**TOURIST SCENIC KENTUCKY**  
Kya's New Hemlock Lodge by Macky Lovelace  
Natural Bridge State Park is now a complete family vacation resort.  
New luxurious Hemlock Lodge has been dedicated and is ready for the vacationer. This lodge is the ninth one to be completed in Kentucky's State Park system through the \$20 million park-expansion program which began in 1960.

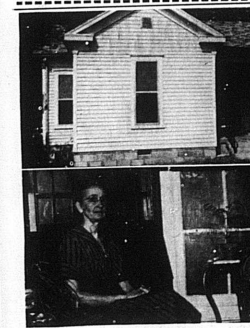
The 28-room lodge, built of native stone and redwood, blends harmoniously with the magnificent country-side view. Each unit affords the vacationer such luxuries as double beds in every room, (one being an attractive sofa converting to a bed), wall-to-wall carpeting.

For recreation there is a new swimming pool, horseback riding, boating on the lake, nature hikes, and other supervised recreation. Natural Bridge State Park is located on Ky. 77, just off the new Mountain Parkway.



Plan your next vacation right here at home at one of Kentucky's beautiful state parks. You'll find magnificent modern lodges with the finest accommodations... glamorous dining rooms... or private, comfortable housekeeping cottages. You'll enjoy real outdoor fun... swimming, boating, fishing, golf, tennis and horseback riding... plus group activities planned to entertain all ages. Why spend precious vacation or week-end time traveling long distances? You can have your best vacation ever in Kentucky.

**NOTICE**  
What we sell we make service calls on.  
Equipment not sold by us must be brought to the shop for service.  
Name: \_\_\_\_\_  
Address: \_\_\_\_\_  
City: \_\_\_\_\_ State: \_\_\_\_\_  
GENE'S TV  
Carlisle, Ky.



"We've got the oldest electrically heated home in the area,"  
...and electric heating certainly is practical.  
Even in the cold winter of '62-'63 our total heating bill was only \$149.73.  
Old house or new, electric heat can't be beat. Miss Zardetta says, "I wouldn't trade back to our old heating for anything. We both teach and when we return from school the house is warm and comfortable." Miss Augusta adds, "Our house stays so clean, and we especially like the individual room control — and the cost is so reasonable."

IF YOU PLAN TO BUILD OR REMODEL — GO FIRST CLASS — GO ELECTRIC

**KU**  
GO FIRST CLASS ELECTRICALLY CLEAN COOKING FRY WATER HEATING FLAMERS BAKING TRUITY BAKING

**KENTUCKY UTILITIES COMPANY**  
OF SERVICE  
an investor-owned electric company

# IMPORTANT NOTICE

Residents of Carlisle and Nicholas County will be contacted to receive an explanation of

## American Republic LifeGuarded Protection\*

Watch for the man who carries this card

**AUTHORIZED REPRESENTATIVE**  
**AMERICAN REPUBLIC HOSPITAL & SURGICAL PLAN**  
**LifeGuarded Protection\***  
C.F. Estell  
AMERICAN REPUBLIC INS. CO. SECRETARY  
DES MOINES, IOWA

Learn the facts about LifeGuarded\* and the advantages of  
**American Republic LifeGuarded Protection\***

The Company With THE NUMBER 1 Claim Paying Record In Its Field  
American Republic returns more of the premium dollar in claim benefits than any of the Top 40 insurance companies offering individual accident and health insurance according to latest 5-year figures.

**American Republic INSURANCE COMPANY**  
National Headquarters: Des Moines, Iowa  
"Protection...The American Way"

### Churches

**CARLISLE BAPTIST CHURCH**  
August Peters, Pastor  
Sunday School—9:30  
Morning Worship—10:40  
Training Union—April thru September 7:00 p. m.  
Evening Worship—8:00 p. m.  
Mid-week Prayer Service Wednesday, 7:30 (except first Wednesday which is business meeting)

**SHRINE OF OUR LADY**  
Father Edwin H. Trimbur  
Holy Mass: Sundays 9:00 a.m. and 12:30 p.m.  
Weekdays 7:00 a.m.

**THE PRESBYTERIAN CHURCH**  
W. R. Raborn, Minister  
9:30—Sunday School. There is a class here for you.  
10:45 a. m.—Morning Worship.  
10:45 a. m.—Morning Worship.

**CARLISLE METHODIST CHURCH**  
O. S. Gardner, Minister  
9:30 a. m.—Church School.  
10:45 a. m.—Morning Worship.  
6:30 p. m.—MYF Groups Meet.  
7:00 p. m.—Prayer Group Meeting.  
7:30 p. m.—Evening Service.  
7:30 p. m.—Wednesday Evening Prayer Meeting and Bible Study.  
Sub-District Worker's Conference for Teachers and workers in the Children's Division will be held in the Carlisle Methodist church on Thursday evening, July 23, from 7:30 to 9:30. Conference leaders will be in charge.

**First Christian Church**  
Oliver Savage, Pastor  
The Church at Study 9:45 a. m.  
The Church at Worship 10:45 a. m.  
Evening Worship at 8 p. m.  
Mid-week Service Wednesday, at 8 a.m. Trayer Service and Bible Study.  
You are cordially invited to attend.

**CHRISTIAN CHURCH, CARLISLE, KY.**  
Norman L. Kiser, Minister  
Early Church, 8:15. Sermon Subject: "The shadow of a Question Mark."  
The Church at Study, 9:30. A class for everyone.  
The Church at Worship, 10:30. Sermon Subject: "The Shadow of a Question Mark."  
Vesper Service, 6:30. Sermon Subject: "Is marriage for keeps?"  
Moments of Meditation, 7:15.  
Sermon Subject: "God's Trumpeter."  
Youth Rally, 2:30, Sunday, 19 July, Blue Licks Christian Church.  
Christian Family Hour church service, Wednesday, 7:30.

**Revival**  
Mt. Pleasant Methodist Church  
Evangelist Dr. Warner P. Davis  
Pastor Rev. Dave Miller  
July 19 thru 26 8 P.M.  
SPECIAL MUSIC EACH NIGHT  
Pray Invite Others Come

The public is cordially invited to attend these services.

**EAST UNION CHRISTIAN CHURCH**  
Allen Mansel, Pastor  
Services the 2nd and 4th Sunday.  
Family services will be held on the 4th Sunday night.

**REVIVAL**  
Moorfield Christian Church  
Beginning July 22 through August 2, with no services on either Saturday night. Rev. James M. Seal, Pastor of the Mt. Sterling Christian Church will hold the meeting.

**DOVE SEASON IN TWO PERIODS**  
Frankfort, (Special)—The dove season for Kentucky is set within a framework fixed by the Department of Interior. That framework has not yet been received by the Department of Fish and Wildlife Resources, but the Commission has set the following dates for the season, September 1 through October 31, and December 1 through December 9. If a longer than 70 day season is allowed the additional days will be added to the December season. Bag and possession limits are set by the Department of Interior.

**Farmers Got A PEST PROBLEM?**



Weeds, Insects, Diseases?  
We'll Help You Beat 'Em With Southern States Chemicals  
Your Southern States Agency is "Pesticide Headquarters." When pests threaten your profits, we'll help you dust or spray 'em to death. Our experience and full arsenal of Southern States Chemicals can get real results for you. Give us a call.

**Carlisle Cooperative**  
CARLISLE, KY. • PHONE 87  
Your Southern States Cooperative Agency

**LERMANS**  
SATISFACTION GUARANTEED  
The Largest Selection Of Blankets We've Ever Shown  
Save \$1 and More...select your blanket needs now from the largest selections we've ever shown.

**50¢ DEPOSIT HOLDS SELECTION DURING THIS ANNUAL SALE**

## ANNUAL LAY-AWAY BLANKET Sale!

BEACON QUALITY... Big 72 x 90 Inches... \$6.98 Elsewhere

### Floral Print Blankets

94% Rayon for Luster and 6% Nylon for Strength  
Beacon LAFLEUR Quality with PERMANAP High Loft  
Colorful Screened Floral Prints and 6 inch Binding  
Allergy Free and Guaranteed Mothproof  
Full Three Pounds for Warmth and Service  
Maintains New-Like Look After Repeated Washings

50¢ DEPOSIT Will Hold on Convenient Lay-away Plan

**72 x 90 'Beacon' with PERMANAP High Loft**  
• SOLIDS • FLORALS • JACQUARDS • PLAIDS  
Rich blend of 94% rayon for luster and 6% nylon for strength. 1/2 inch acetate binding. 2 1/2 lbs.  
50¢ DEPOSIT Will Hold Selection on Lay-away Plan

**80x90 BLANKETS \$4.98**  
Extra large 80x90 inches... 55.98 elsewhere. 70% rayon, 20% acrylic. PERMANAP for higher loft, solid color. 6 inch nylon binding.

**REVERSIBLE QUILTS \$6.49**  
\$7.40 elsewhere. Washable multi-color floral print cover. Zig-zag stitched to prevent gathering. 30x64 and 80x90.

**72x90 PARKLANE \$7.85**  
Bag  
Reg. \$9.69 Miracle blend with nylon for warmth, rayon for strength. Retains deep nap after repeated washings. Rich colors. Nylon binding.

50¢ DEPOSIT Will Hold Selection on Lay-away Plan

**72x90 Thermal Weave Blanket For Summer and Winter Use \$5.98**  
All-cotton with Cellulose "weave"... looks like hand-crochet. Warmth for winter and cool light comfort in summer. Washable colors.  
50¢ DEPOSIT Holds Selection

**White and Pastel Sheet Blankets \$7.98**  
70 x 84 inches "Beacon" cozy-warm rayon blankets with PERMANAP for warmth thru higher loft. Lockstitched ends.

**FREE Full Bed Size Reversible QUILT**  
See in and register, no obligation. King size \$46.00. Made by Lermans' Quality. \$14.98 QUILITY YOU NEED NOT BE PRESENT TO WIN.

**Pay Cash and Pay Less**

**LERMANS**  
SATISFACTION GUARANTEED