

NOV. 19: Tobacco festival well attended; Edgar Allen Barrall wins on best handled crop, and R. S. Willis Jr., best crop... Teenagers automotive program enters final planning stages... Johnson-Mathers Home is nearing completion... Wesley attends school officials legal school conference... Miss Tallahas Kelly named to the Magna Cum Laude honor roll at Midway Junior College and Pinkerton High school... Thomas Jacob, teacher of special education in Bourbon county to speak at NCHS P.T.A. Trap shoot winners listed.

NOV. 26: Sue Irvin IFVVE to Norway returns... Christmas in Atlanta Parade route given... Blue Jackets open cage season Dec. 1 here against Easton county... Ambulance wrecks patient unhurt... J.C. net league published... NCHS P.T.A. has 'jobs' project... 7 attend district all meet at Stanford... Mail early in postal plant... Warren Fisher attends offset printing seminar at U.K. Band Boosters to meet... Chester Ockerman breaks wrist cranking tractor.

DEC. 3: Schedule published for Christmas Parade here Saturday... Fall from pony is fatal to Miss Nancy Louise Smith... School transportation rules for safety are announced... Garden Club to sponsor home doorway decoration contest... Tobacco sales were begin Monday... Wool growers reminded of Dec. 31 cut-off date... J.C. basketball schedule listed... Carlisle Elementary sixth grade presents play... 411 talent show at city school tonight.

DEC. 10: Library received \$59,339.77 Federal grant for construction of building on North Broadway... Dam on Hinkston Creek 10 miles above Millersburg considered by Corp of Engineers... Mrs. William Gilley honored at dinner... Recreation action planned... Mrs. C. Wayne Shumate and Mrs. Charlene H. Wilson named to State Clean-up and Beautification committee... NCHS accredited by Southern Association of Schools... Christmas parade

float winners pictured... R. L. Talbert resigns school board... Police clinic set... Jackets defeat U-19... Sue Irvin IFVVE to Norway to speak at Rotary Club's ladies night program... Dougherty Lodge to select officers Dec. 25.
DEC. 17: Nativity scene at Blue Grass Industries, Inc. pictured... Indifference calls improve phone service on long lines... William M. Young awarded Kentucky Distinguished Service Medal at National Guard ceremonies... Fire destroys three homes in county... Bank installs modern equipment... Jimmy Marshall, 17, and Edward Walls, 19, accused of break-ins... Jackets win over Tollaboos... New grower tobacco application being accepted... NCHS chorus to present program.

DEC. 24: Children's drawing Christmas feature of 20-page Mercury... Sen. Cooper reminds citizens in this area of Hinkston Reservoir public hearing Dec. 30... Luther Clay re-elected Democratic chairman... Carol Curtis wins V.F.W. speech contest... The Rev. Norman L. Kiser announces resignation... Brenda Bach winner of 1964 Soil Conservation Essay Contest... ASC appoints two dealers to Emergency Livestock Feed Program... Debite Vice wins monologue act.

DEC. 31: If the writer gave the highlights there would be nothing to read in this issue on the front page.



Thank you all for letting us serve you during the past year.

We Wish You The Happiest Of New Years!

Ishmael Cleaners

Reid, Vice & Green



Drawn By JACKIE COATNEY
Compliments of

Standard Oil Co.
William B. Parker, Agent

Feed Offered Ky. Counties

Government-owned feed grains at reduced prices to eligible farmers was offered this week to 20 Kentucky counties. Counties designed for the aid by the U.S. Department of Agriculture are: Allen, Anderson, Breathitt, Carlisle, Cumberland, Fulton, Gallatin, Hickman, Harrison, Lawrence, Lee, Lewis, Mercersville, Nelson, Ohio, Pulaski, Rockcastle, Warren, Washington and Wolfe.

The list raises to 47 the number of state counties offered this emergency livestock feed program because of the extended drought.

Eligibility of farmers will be determined by local Agricultural Stabilization and Conservation Service (ASCS) offices.

LET A WANT AD WORK FOR YOU!



May every day of your New Year be as delightful as a holiday... may it be a year of happiness for you.



May every hour be your happiest one.

Dorsey Bros. & Fisher

Peace

Our Prayer For The New Year.

1965

Mathers-Shearer

Business Levels For 1965 Will Be Good

Net farm incomes probably will be close in 1965 to the \$12.3 billion recorded annually since 1961, Wilmer Browning, economist, noted. Production expenses probably will increase in 1965 less than usual; net income per farm may have a slight increase; and farm population and

May peace and good will fill the days of the New Year.



HAPPY NEW YEAR

Frank Weaver's Grocery



New Year Joy

Drawn By MARIE DORIS WILLS
Compliments of

J. Berry Burnaw
County Clerk



Sexton's Grocery

number of farms will continue to decline.

Current prospects for 1965 are for further increases in total output, employment and consumer income," says Bureau of Economic Analysis agricultural economist, noted. Production expenses probably will increase in 1965 less than usual; net income per farm may have a slight increase; and farm population and

He said "recent trends in economic activity do not show any serious imbalances in the economy, prospective business outlook for new plant and equipment projects for further increase, retail sales in recent months were 8 percent above the year-earlier level, and new orders for consumer durable goods averaged more than 10 percent above year-to-year levels."

General outlook by category:

STOCKS BUILD UP: Relatively small in 1964 because of expanding markets, stable prices and conservative inventory policies. Auto stocks likely will increase in anticipation of a steel strike next year.

RESIDENTIAL CONSTRUCTION: Only sector of the economy to show some weakness in 1964. Outlays for this went down since early 1964. Demand likely will be stronger in 1965 due to demand for business schools and related facilities.

CONSUMERS DISPOSABLE INCOME: Increased sharply in 1964 from a reduction in income taxes. Income are expected to increase in 1965.

EXPENDITURES FOR FOOD: Probably will increase in 1965, though not as much as in 1964.

GOVERNMENT PURCHASES OF GOODS AND SERVICES: Will increase to 1965, probably the most by state and local government areas for schools, roads and other public facilities.

CASH RECEIPTS FROM FARM MARKETING: May decrease in 1965, but could be offset by an increase in government payments.

CROP MARKETING: Likely to be lower than 1964, though livestock and livestock product marketing will be at record levels. Prices of the former may be lower, prices for the latter close to the 1964 levels.

GOVERNMENT PAYMENTS: Feed grain pro-

gram payments may be up due to increased participation, wheat program payments about the same as 1964. Other program payments may be about the same.

REALIZED GROSS FARM INCOME: Will be close to the record high 1964 level of \$4.1 billion.

BURLEY TOBACCO: Cigarette production (net) outlook for burley was down in 1964, 3 to 4 percent from 1963, but an upward trend since 1965. The continued re-permissions from the Surgeon General's report on Tobacco and Health and the proposed Federal Trade Commission labeling regulation, which is to go into effect July 1, 1965, are not encouraging factors for any substantial increase in cigarette production in 1965.

Total supplies will be about 2 percent more than the 1963-1964 supply and 3.5 times the probable disappearance (use) rate. Carryover stocks will probably increase, and government loan stocks as of Aug. 31 were 200 million pounds above the 1963 level.

Crowder vote this year on a three-year quota program. Pre-1965 level for 1965 will be about 1 percent higher than for the 1964 crop.

If marketing quotas are appraised by producers.

OTHER TOBACCO: Exports (25 million pounds) are up a little from 1963, though carry-over is about 10 million pounds higher. The 1964 crop is estimated at 12 percent larger than 1963.

Total supply for 1965 is expected to be about 3 percent above last year's. Dark air-cured domestic use is up about 3 percent from 1963. Total supply of these two is estimated at 85 million pounds, a little less than the previous year.

FEED GRAINS: Supplies estimated 1964-1965 down 3 percent from the previous year, some 15 million tons below the record level of 1960-1961. Prices will average slightly higher than for 1964, and carryover stocks will be down some 11 million tons. High protein feed supplies will be somewhat larger. Hay supplies are 3 percent smaller than for the previous year.

Corn, sorghum, oat and barley (feed-grain) supplies are down, though exports in 1965 may exceed the 1963 level.

BEEF CATTLE: Number of cattle on farms will be slightly above the number on farms January 1, 1964, though prices have varied considerably in 1964. Beef production was 12 percent higher during the first 10 months of 1964 than for 1963. Improved feed cattle prices since May of 1964, has resulted from increased consumer incomes, population growth, promotional activity and less competition from other meats. Beef consumption per capita in 1965 probably will reach 100 pounds, considerably higher than for 1963.

Total red meat consumption (beef, pork, veal, poultry, etc.) is expected to reach 174 pounds per capita in 1964, up 4 pounds from 1963; it is expected to decrease slightly in 1965.

HOGS: Prices could remain relatively favorable to farmers at least through mid-1965. Supply of pork in 1965 will be lower if farmers' intentions to farrow fewer sows holds up, though relatively favorable prices the first half of 1965 could reverse this trend during the second half of 1965.

SHEEP AND LAMBS: Number on farm will continue to decline in 1965, slaughter was down more favorable to producers. Sheep and lamb prices in 1965 will likely be slightly higher than last year because

of a smaller lamb crop and a lower slaughter rate.

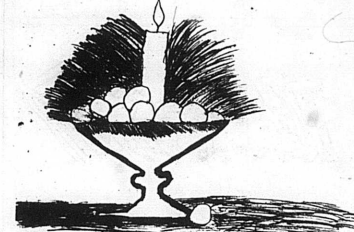
DAIRY OUTLOOK: Numbers of dairy cattle still declining, though production per cow continues to increase. In 1965, average production per cow will likely be 8,000 pounds. Farm milkings of milk for 1964 probably will be about 119.4 billion pounds. The improved price situation likely will continue through 1965. Production costs likely will increase but probably not as much as in 1964.

POULTRY AND EGGS: Increased production foreseen and slightly lower prices. Broiler production expansion expected to be small, egg production in 1965 probably higher than in 1964 which in turn was 2 1/2 percent above 1963.

Turkey production probably will be higher in 1965 even though prices are expected to be somewhat lower.

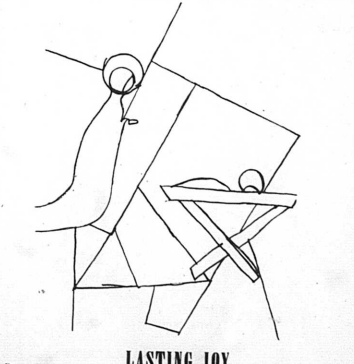
Subscribe TO THE CARLISLE MERCURY

GREEN & MILLER Service Station



Drawn By Dawnie Cannon
Compliments of

Ralph Bowen



Drawn By DAVID RUTCHIE
Compliments of

LASTING JOY TO ALL

First National Bank