

Deaths

Clarence Burke
Clarence Burke, 75, died of a heart attack at 5 p.m. Friday, Dec. 4, at his home on the Cane Run Road. A native of Nicholas County, he was a farmer and a member of the Casady Methodist Church.

Survivors are his wife, Mrs. Etta Reid Burke; three daughters, Mrs. Marguerita Ellington and Mrs. George Harney, Lexington, and Mrs. Paul Ellington, Paris; two sons, Raymond and Billy Burke, Moorefield, four brothers, Herman, Luther, and William Burke, Fleming County, and Marvin Burke, Mason County; 12 grandchildren and eight great-grandchildren.

The body was at the Mathey's Shearer Funeral Home, where services were conducted Sunday, by the Rev. S. Gardner. Burial in the Bethel Cemetery, Roy Ellington, Harrison Burke, Herbert Smoot, Roger Bowen and Foster McLean.

Dr. H. C. Blount
Dr. Henry Clay Blount, 84, who had been practicing medicine for 58 years, died at 1 a.m. Dec. 2 at Central Baptist Hospital in Lexington.

Dr. Blount was graduated from Carlisle High School in 1910 he was graduated from the University of Louisville Medical School, and began his practice.

He went to Leesburg in 1913 and had been in active practice until October of 1963 when he went into semi-retirement. He moved his practice to Cynthiana in 1945.

A native of Nicholas County, he was born July 23, 1880, a son of the late John and Sarah Herrin Blount. He was a member of Victory Baptist Church and of the St. Andrews Lodge No. 18, F. & A. M. He was a veteran of the First World War.

Dr. Blount was a member of the Harrison County Medical Association and of the American and of the American Medical Association.

Survivors are his wife, Mrs. Elizabeth Blount; two sons, Dr. Franklin Blount of Lexington and Dr. H. C. Blount Jr. of Des Moines, Iowa; a daughter, Mrs. Joe Beasley of Harlan; nine grandchildren and a great-grandchild; a brother, Robert H. Blount, Plainfield, Ind.

Services were held at Whaley Funeral Home at 2 p.m. Friday by Rev. R. E. McMinnery, burial in the Carlisle Cemetery.

Palmer; Kendall
Cham, Burdette C. Gilin, James Williams, Billy Marvin Gugel, William E. Boushy, he was a farmer and a member of the Casady Methodist Church.

Survivors are his wife, Mrs. Nora K. Vickers; Mrs. Nora Vickers, 75, widow of Robert G. Vickers, died at 12:13 p.m. Saturday, Dec. 5, at Bourbon County Hospital. She was native of Nicholas County and a member of North Middletown Church of the Nazarene.

Survivors are four daughters, Mrs. Rose Traylor, Bourbon County; Mrs. J. C. Howard and Mrs. Carl Dray, Paris, and Mrs. Cecil Zorner, Manchester, Ohio; eight sons, Robert Vickers, Phoenix, Ariz.; Roy Vickers, Versailles, W. H. Vickers and Samuel Vickers, Bourbon County; George Vickers, Middle-town, Ohio; Paul Vickers, Calliet, W. Va.; David Vickers, Lexington, and James Cook Vickers, Paris; a sister, Mrs. George Schneider, Cincinnati, Ohio; 35 grandchildren and 38 great-grandchildren.

Services were conducted at 3 p.m. Monday at Davis Funeral Chapel by the Rev. John Herron and the Rev. Jesse Simms. Burial in the Paris Cemetery.



every pound of
TABLERITE MEAT
...is a pound of

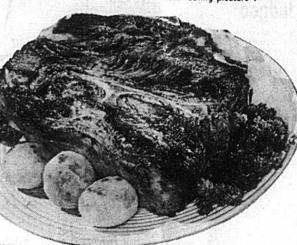
eating pleasure



- TableRite Egg Nog 59¢
- IGA Fabric Softner 49¢
- Zesta Crackers lb. box 29¢
- IGA Soft Drinks 28 oz. 6 for \$1
- Frozen Lima Beans 10 oz. 2 for 39¢
- IGA Fruit Pies 20 oz. 29¢ (apple, peach, cherry)

Mirror Sauce Pan & Cover 2 1/2 Quart \$2.79 (With \$5.00 Purchase)

OUR MEAT GUARANTEE If you want to serve meat that is tender every time... serve TableRite! We are so sure that you will be completely satisfied that we guarantee every cut. If you are not pleased, we will give you your money back plus your purchase.



Gift Hams for Christmas!
TABLERITE TASTY Canned Ham 5 lb. Size \$3.99

Chuck Roast Blade Cut lb. 39¢

TableRite Boneless Chuck or Round Bone Roast lb. 59¢
Lean Beef Short Ribs lb. 29¢
Webbers Sausage 2 lbs. 99¢
TableRite Ground Beef lb. 39¢
Lean Beef Stew lb. 59¢

Pet Milk TALL CAN 4/57¢

Red or Golden DELICIOUS Apples 4 lb. Bag 39¢

Fla. Juice Grapefruit 5 lb. bag 39¢
Crisp, Green Cabbage lb. 7¢
Kale Greens 12 oz. cello 2/49¢
Fresh Spinach 12 oz. cello 2/49¢

- IGA FANCY Applesauce 303 Can 10¢
- DOLE Pineapple Sliced Crashed Chunks No. 2 Can 3 for 89¢
- DOLE PINEAPPLE Juice 46 oz. Can 3 for 89¢
- PURE VEGETABLE Crisco 3 lb. Can 69¢
- IGA STRAWBERRY Preserves 28 oz. Jar 59¢
- IGA CLING Peaches Halves or Sliced 303 Can 2 for 39¢

Coatney's PEOPLE ARE SLEEPING ON IGA FOODLINER

Notice
Property Owners of Carlisle, Ky.
We have in stock all necessary pipe and fittings to make your proper sewer connections.
These materials are approved and recommended by the contracting engineers and city council.
Ratliff Bros. Co.
Phone 10 Carlisle, Ky.

Parks Homemakers
by Mrs. Sherman Hollar. Mrs. Charles Wilson was hostess to the Parks Homemakers Club, which met at her home Thursday, December 3, for their Christmas meeting.

Mrs. Rubel Williams, president, called the meeting to order. Ten members answered the roll call with "Something I Want for Christmas."

The business session was held with the various chairmen after which, we adjourned for lunch at Allison's Restaurant.

After lunch we continued our meeting at Mrs. Wilson's with the Christmas program. The story, "Unto You A Savior" was given by the group. And the story, "Joy Cometh In The Morning" by Mrs. Floyd Williams.

The club exchanged Christmas gifts. The next meeting will be at the home of Mrs. Rubel Williams, Jan. 7.

STUDENT OF THE MONTH
by John B. Kerns

The Carlisle Elementary School elects one person from each section of the seventh and eighth grades to be Student of the Month. They are elected by their classmates. It is a great honor to be elected.



They'll say Merry Christmas for years to come

There are big advantages to giving electrical gifts. They're so practical; keep on saying "Merry Christmas" for years and years!

Shopping is easier, too. No problem selecting the right gift for everyone on your list... an electric blanket for Grandmother... electric mixer for the lucky home-maker... an electric shaver or electric saw for Dad.

Whatever you choose, you can be certain it's appreciated if it's electric.

There's a large selection of electrical gifts at your dealer. Visit him soon for the gift from a thoughtful person.

GIVE ELECTRICALLY

The board of directors, management and employees extend their best Season's Greetings to you and yours. We hope that 1965 brings you a happier, more comfortable life. We re-dedicate ourselves to bringing better living with low-cost rural electric power.

Your Fleming-Mason Rural ELECTRIC COOPERATIVE CORP. FLEMINGSBORO, KY.

Sparklers 3 - 29¢
Spectacular VALUES

Whole FRYERS 25¢ lb.
Edwards whole hog Sausage 2 lbs. 99¢
Spareribs lb. 39¢
Instant Chase & Sanborn Coffee 6 oz. 89¢
Morton T.V. Dinner 2/89¢
Golden Ripe Bananas 10¢
Lettuce 19¢

WEINERS lb. 65¢
STAR KIST TUNA LIGHT CHUNK 1/2 CANS 3 for 89¢
Pecans lb. \$1.19
Peanuts 2 1/2 LBS. 99¢
Diamond Walnuts med. 49¢ large 59¢
Blue Valley Roll Butter - 59¢

Del Monte Seedless Raisins 15 oz. 29¢
Planters Peanut Butter 18 oz. 49¢
Peter Pan Salmon tall can 49¢
Hi C Fruit Drinks orange and grape 3 for 89¢
Birdseye Awake 9 oz. 39¢

SPRY SHORTENING 59¢
Zesta Crackers - 29¢
Mountain Dew 6 PAK CARTON / with BOTTLES 25¢

49¢
1 Egg White Recipe

C & G
Complete KY FOOD STORES

Scott Family Napkins 10¢
Northern Toilet Tissues 12 for \$1.00
Kleenex Facial Tissues 600 PACK 33¢
COMPLETE LINE of Fruit Cake Ingredients