



"TEACHER'S WORK IS NEVER DONE"—Mrs. Gladys Kenney, American History teacher moves floor of a room adjoining the Nicholas County High School chemistry laboratory which was flooded Sunday night on early Monday morning.

BURLEY TOBACCO USE GOING UP

Lexington, Ky.—Cigarette output is expected to be up significantly for the year when 1963 figures are available. And disappearance (domestic and foreign use) of burley tobacco for the October 1962-September 1963 marketing year also is expected to be up.

Those two statements were in the University of Kentucky Cooperative Extension Service agricultural economics department's biweekly nation letter issued this week.

William Brown, economist, said the 1962 output of cigarettes probably will be around 300 billion. That is about 14.5 billion more cigarettes than produced in 1959, and is a new high.

And smokers are expected to consume about 323 billion cigarettes (about 2 percent more than in 1959) while most of the remainder will be exported.

Burley disappearance is estimated at \$2.1 million pounds, some two percent higher than the previous year.

In the last four years, domestic disappearance (use) and export have increased steadily. The 1959-1963 year may be the fifth year of successive gains, Brown said.

Brown noted the major outlet for burley is in cigarette manufacture. Cigarette-making was up 7.1 percent for the period October 1962-September 1963 from the previous year. Exports in 1962-1963 may total about 8.1 million pounds, considerably above the 1959-1962 figure. Exports to Italy and Portugal are up, as well as to Sweden, Egypt, the Netherlands, Austria, France, Thailand and the crown colony of Hong Kong.

One reason for the increase in the growing popularity abroad of American-type blended cigarettes.

In the matter of future bur-

OUR VALUES

Save Your SAV—MOR
Coupons For Purchase
Of Christmas Gifts

MONEY SAVERS
HAVE MADE MANY SATISFIED SHOPPERS

CHUCK ROAST



lb. **39¢**



Fresh **Ground Beef** **LB. 39¢**

Southern Star

Breakfast Bacon lb. **49¢**

Sauers Black Pepper 3 oz. can 2 for 39¢

Shedd's Roasted Peanuts (In Shell) 12-oz. 29¢

Musselman Apple Cider gal. 98¢ 1/2 Gal. 59¢

Hamburger Buns Favorite or Buttermilk 8 Pack 2 for 45¢

Pop Corn 1/2 lb. 9¢

Sweet Pea Cherries 200 Can 2 for 45¢

Nabisco Old Fashioned Ginger Snaps 1 lb. box 41¢

Red Cross Macaroni or Spaghetti 7 Oz. Pkg. 2 for 25¢

Frosty Acres Apple Pies Frozen 3 for \$1

Chefs Delight Cheese 2 lb. box 49¢

Trick or Treat Halloween Candy

APPLES 4 lb. bag 39¢

Margarine Churngold lb. 29¢

Salad Bowl Special

Green Peppers Cucumbers

Carrots Green Onions

Radishes 5 lb. bag 49¢

6 CANS FOR 45¢

Life-Fluff BUTTERMILK BISCUITS

ICE CREAM Meadow Gold 1/2 Gal. Pkg. 69¢

C & G

Shopworth Super Market

A Delectably Different Combination!



5c

Each

ROYAL GELATIN

All Flavors

Purex Bleach Qt. 23¢

Trend Dry Reg. 2/39¢

Trend Liquid Reg. 2/59¢

BE PREPARED FOR WINTER

Storm doors and storm windows are not an expense, they're an investment.

You will save enough on your heat bill to pay for the installation in a few years. And think of the comfort you'll enjoy in the cold winter days.

We at Ratliff Bros. are always glad to give free estimates, and help you in any way.

Our prices start at \$12.95 for storm windows completely installed.

Give us a call today for a free estimate.

Ratliff Bros. Co.

Phone 10 Carlisle



MRS. S. W. KELLER—Present to her son, Henry Keller, a Commission as Honorary Admiral in the Texas Navy. A letter from John Connally, Governor of Texas, is as follows: Dear Mr. Keller: Upon the recommendation of Senator George Parham I am pleased and proud to bestow commission you Honorary Admiral in the Texas Navy. The Texas Navy, small in size, but long in bravery, played a vital role in the Texas Revolution by protecting the coastline during the days of the Republic. It is now devoted to the preservation of the history, boundaries, water resources and Civil Defense of the State. I know you will serve with pride and honor whenever called upon. Sincerely, John Connally, Gov. Keller served as an Officer in the U. S. Navy during World War II.

CLOSED-CIRCUIT TV

one of the newest and most effective teaching aids—now is virtually a commonplace in two University of Kentucky classroom areas, the Chemistry-Physics Building and the Medical Center. The two systems are tied together in a kind of campus TV network that will be enlarged by half next year with completion of the television-equipped Agriculture Research Center. Many statewide telecasts are expected to originate in these buildings when the Kentucky Educational Television Authority network becomes operational.

CATALOG LISTS WORKS ON STATE'S MINERALS
A new catalog just issued by the Kentucky Geological Survey lists 215 maps and 145 bulletins and brochures, all now available at the University of Kentucky. Some of the maps depict geologic information for all of Kentucky, while others provide data on certain sections. Coal, oil and other mineral deposits, ground water and potential underground wealth are among subjects the various maps cover. Copies of the catalog listing the available publications may be obtained by writing the Kentucky Geological Survey, University of Kentucky, Lexington.

MR. SMITH has been making CARPETS for the home-makers of America for 118 years. The carpet he makes will fit your needs, now and in the years to come. Above all—he knows that only honest value will keep his cherished traditions alive. **PURV SANSHULING**—a wonderful, new all-wool surface Wilton carpet at an astonishingly low price. **ALEXANDER SMITH** Carpet and Rug **Garrett Furniture**

STORM ALUMINUM DOORS and WINDOWS
SAVE SAVE

Discount Price
Windows as low as \$12.00

PHONE FOR FREE ESTIMATE

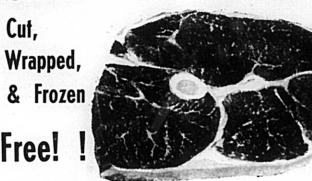
Dorsey Bros. & Fisher
Phones 46-J or 46-R

MORE PEOPLE ARE SHOPPING AT IGA!



TABLETITE Beef
Forequarters lb. 39¢
Hindquarters lb. 59¢
Sides lb. 49¢

Top **Round Steak** lb. **79¢**



Sirloin Steak lb. **89¢**

T Bone Steak lb. 99¢
BONELESS
Sirloin Tip Steak lb. 99¢
BONELESS
Sirloin Tip Roast lb. 79¢
TABLETITE Weiners lb. 49¢
BONELESS
Ground Beef lb. 43¢
Rump Roast lb. 79¢

Domino SUGAR 10 lb. Bag **98¢**
(10 lb. Limit with \$3.00 Order)

Sliced Pineapple #2 Can 3 for \$1.00

Green or Shellie Beans 2 1/2 Can 3 for 79¢

Zesta Crackers 1 lb. Box 29¢
Sweepstakes Mackerel #1 Can 2 for 29¢
IGA
Elbow Macaroni 12 Oz. 2 for 29¢

Coatney's IGA FOODLINER

Shortening 3 lb. Can **49¢**

Dole Pineapple Juice 46 Oz. 3 for \$1

H L H Tomato Juice Qt. Decanter 19¢

Jonathan **Apples** 4 lb. bag **39¢**

Fla. White Grapefruit 3 1/2 3 for 29¢
Crisp Pascal Celery 1 stalk 15¢
Idaho Potatoes 10 lb. bag 59¢