

TOURING SCENE
KENTUCKY

FROM PAGE 1
The homemaker's garden produces anything, but the gatherer must be there with knife and basket to get the young shoots at their tender best.

Bibb lettuce, pruned by salad fanciers throughout the world over, was developed in Kentucky during the 1800's by Judge John Bibb of Frankfort. The obstinate horticulturist, legislator, and lawyer developed the dark-green, rose-tipped heads in his garden which sloped down to the Kentucky river at his home. (Col. Bibb's garden and home, a handsome cabled brick built in 1830, still stands in Kentucky's capital city.)
Kentuckians outdo themselves in tempting corn treats, ranging from iron skillet of fried corn or fritters. Hominy, fried mush and grits are served regularly in Kentucky eating establishments, and variations of cornmeal—pone, hush puppies, batter cakes, and a few—will satisfy the discriminating diner.

FLOWERING CRAB
APPLES CAN BE USED
FOR JELLY

Fruits of the ordinary flowering crab apple can be used for making jelly, according to Earl H. Hew, U.S. Extension horticulture specialist, who says he has received several letters asking about this. However, it takes much diligence and patience to make jelly with the small-fruited kinds. Various flowering crab apple fruits differ greatly in the amount of pectin they contain, but the fruit size often is more important than the pectin content in determining the fruit's usefulness. Of course, less time and labor is needed to extract juice from the larger-fruited kinds but these varieties are more trouble to care for than the smaller-fruited kinds. The larger-fruited trees must be sprayed as thoroughly as regular apple trees for the prevention of worms and, in some cases, apple scab. New points out:
The variety Dolgo, which has white flowers, is one of the best of the larger-fruited varieties for pectin content. Its moderate-sized fruits ripen around the first of August in Kentucky and are large enough that they need to be sprayed for worm and disease control. Red Flesh, a larger-fruited flowering crab with magenta pink flowers, supplies almost as much pectin as Dolgo; however, unless it is carefully handled, the jelly may be cloudy. Red Flesh crab apples also can be used to make a beautiful, dark red apple butter. Both these varieties grow almost as large as regular apple trees and both are somewhat resistant or tolerant to apple scab and, therefore, quite suitable for Kentucky.
The flowers of the variety Hops are very similar in color to those of Red Flesh but the fruits are smaller than Dolgo. Hops also is a large tree. This well-known variety shows some apple scab resistance. Hops fruits contain a considerable amount of pectin and are suitable for jelly-making—one has the patience necessary to extract juice from the small fruits.
Smaller trees than these three are such varieties as Schneider and Redbud; they usually grow to around 15 or 20 feet in height. Both of these are excellent for

ornamental purposes, but their fruits probably are of more value for bird food than for jelly-making. Both have small fruits, borne in abundance and seldom attacked by worms, but much time would be needed to prepare these fruits for making jelly.
Schneider bears a double, light pink blossom with soft, pink blossoms while Redbud blossoms open to a full, almost pure white from a pinkish bud. The fruits on Schneider are yellow and hang in "ropes" up and down the limbs in the fall. Redbud fruits are not as colorful—they have more of a pinkish or reddish cast—but they usually stay on the tree throughout much of the winter. New concludes.

MOTHER AND FOAL—Taken several years ago at Forest Retreat Farm. Their names (if any) escape us. They could be race winners, but anyway, what better way to fill this space than with two sporty looking animals.

Wish I'd Said That
"Prosperity is something you feel, fold, and send to Washington."—E. M. Remond, *Vista (Calif.) Press.*
"A man is judged by the company he keeps—women by the company he keeps—men by the company he keeps."—Ernest L. Hines, *Wellington (N.Z.) Enterprise.*
"Setting too fast a pace can be harmful—after all, it's a full, almost pure white from a pinkish bud. The fruits on Schneider are yellow and hang in 'ropes' up and down the limbs in the fall. Redbud fruits are not as colorful—they have more of a pinkish or reddish cast—but they usually stay on the tree throughout much of the winter. New concludes.

Home Hardware
"When the tough breaks" and you are up to your neck in snow, you'll wish you hadn't missed six yourself some low cost storm windows. Do it now! It's easy with Warg's KANSAS Storm Window Kits. Contain everything needed for complete storm window. KANSAS America's most popular window kit. —only \$6 at

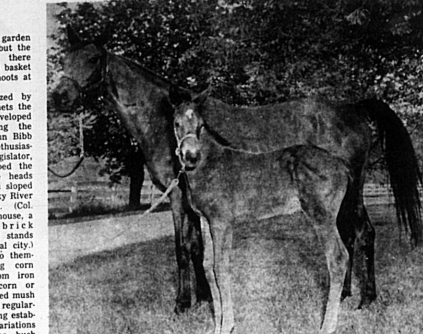
CONSERVATION ANNUAL REPORT
NICHOLAS COUNTY SOIL CONSERVATION DISTRICT
Carlisle, Kentucky
SUPERVISORS:
Lovell Hollar, Chairman
Norwood Auxier, Vice Chairman
Frank Henry, Secretary-Treasurer
Charles Whaley, Member
Howard Sidle, Member

The regular monthly meeting is held on the first Wednesday night of each month. Special call meetings are held as deemed advisable. Attendance is exemplary. Rarely does a supervisor miss a meeting. Believing that good equipment is needed in the District to do needed conservation work, this SCD has sponsored the purchase of several pieces of big equipment. One new bulldozer is expected to be delivered at an early date to Clifton Waugh, heavy equipment operator. It will be financed through the District with money from the Revolving Fund from the Division of Soil and Water Resources.
The Nicholas County Fiscal Court contributed \$500 to the District for operational expenses. This is the second year contributions have been made by the Fiscal Court to the District. The contribution was made in response to the District's presentation of its proposed annual budget. A part-time secretary is

employed to assist in the administrative work of the district and the Soil Conservation Service.
Other sources of income include voluntary contributions by heavy equipment operators and rentals from water tank farms.
The district sponsored Soil Stewardship Week and furnished bulletin material to the ministers for use in their churches. The district is providing "Honor Awards" for presentation to participating ministers and farmers owning more than 50% of the land, are cooperators with the District.
The 1962 US Savings Bond donated by the state was supervised by more than \$80 donated by the District, plus free airplane rides to the winners. There were 222 essays written.
Supervisors assist in the development of the county Agricultural Conservation Program, and the County ASC Committee cooperate in the development of the District's program and goals.
Conservation
The land in this District is too rolling and steep to permit intensive cultivation. Accordingly, we believe the need is great for more and better pasture and meadow production, there by using the land within its capability. About 1500 acres of hay and pasture were seeded, much of it coming alfalfa and grass mixture. Six hundred acres of waterways were established.

Moorefield Homemakers met Thursday, October 3, at the home of Mrs. J. S. Wilson, with Mrs. Harvey Wilson as co-hostess. Mrs. Harvey Wilson, president, called the meeting to order and Mrs. J. W. Clark gave the devotional. The members and Mrs. Mirga Wilson were present.

Moorefield Homemakers met Thursday, October 3, at the home of Mrs. J. S. Wilson, with Mrs. Harvey Wilson as co-hostess. Mrs. Harvey Wilson, president, called the meeting to order and Mrs. J. W. Clark gave the devotional. The members and Mrs. Mirga Wilson were present.



THE LAST OF "RACHEL"—This picture has been hanging around the shop now for a couple of months awaiting the time it could be used without crowding something else out. The man sitting down is Rubel Williams, the other two, your guess is as good as ours.

THE BIBLE—Symbol of Unity
NATIONAL BIBLE WEEK
OCT. 21-27

KENTUCKY
Parks and Shrines

The Nation's Finest Park System... beckons you for a day's outing or a memorable family vacation. Luxurious new lodges and dining rooms... comfortable housekeeping cottages... wonderful recreational facilities... all yours to enjoy at Kentucky State Parks...

The Nation's Finest State Park System
KY. TOURIST AND TRAVEL DIVISION
Capitol Annex Building, Frankfort, Kentucky
Please send me your FREE color literature on Kentucky.
NAME _____
ADDRESS _____
CITY _____ ZONE _____
STATE _____

My Neighbors
"Let me know if Junior annoys you..."
A wise man of the Orient once remarked, "There are three kinds of people in all types of organization—twofoot people, sailboat people and teamboat people. Twofoot people are not to be pushed or shoved along, sailboat people move when a favorable wind is blowing. Teamboat people move continuously by their own steam, they are usually masters of themselves, their surroundings, and their fate."
—T. G. B. L.

CONSERVATION ANNUAL REPORT

NICHOLAS COUNTY SOIL CONSERVATION DISTRICT
Carlisle, Kentucky
SUPERVISORS:
Lovell Hollar, Chairman
Norwood Auxier, Vice Chairman
Frank Henry, Secretary-Treasurer
Charles Whaley, Member
Howard Sidle, Member

The regular monthly meeting is held on the first Wednesday night of each month. Special call meetings are held as deemed advisable. Attendance is exemplary. Rarely does a supervisor miss a meeting. Believing that good equipment is needed in the District to do needed conservation work, this SCD has sponsored the purchase of several pieces of big equipment. One new bulldozer is expected to be delivered at an early date to Clifton Waugh, heavy equipment operator. It will be financed through the District with money from the Revolving Fund from the Division of Soil and Water Resources.
The Nicholas County Fiscal Court contributed \$500 to the District for operational expenses. This is the second year contributions have been made by the Fiscal Court to the District. The contribution was made in response to the District's presentation of its proposed annual budget. A part-time secretary is

employed to assist in the administrative work of the district and the Soil Conservation Service.
Other sources of income include voluntary contributions by heavy equipment operators and rentals from water tank farms.
The district sponsored Soil Stewardship Week and furnished bulletin material to the ministers for use in their churches. The district is providing "Honor Awards" for presentation to participating ministers and farmers owning more than 50% of the land, are cooperators with the District.
The 1962 US Savings Bond donated by the state was supervised by more than \$80 donated by the District, plus free airplane rides to the winners. There were 222 essays written.
Supervisors assist in the development of the county Agricultural Conservation Program, and the County ASC Committee cooperate in the development of the District's program and goals.
Conservation
The land in this District is too rolling and steep to permit intensive cultivation. Accordingly, we believe the need is great for more and better pasture and meadow production, there by using the land within its capability. About 1500 acres of hay and pasture were seeded, much of it coming alfalfa and grass mixture. Six hundred acres of waterways were established.

Moorefield Homemakers met Thursday, October 3, at the home of Mrs. J. S. Wilson, with Mrs. Harvey Wilson as co-hostess. Mrs. Harvey Wilson, president, called the meeting to order and Mrs. J. W. Clark gave the devotional. The members and Mrs. Mirga Wilson were present.

Moorefield Homemakers met Thursday, October 3, at the home of Mrs. J. S. Wilson, with Mrs. Harvey Wilson as co-hostess. Mrs. Harvey Wilson, president, called the meeting to order and Mrs. J. W. Clark gave the devotional. The members and Mrs. Mirga Wilson were present.

Moorefield Homemakers met Thursday, October 3, at the home of Mrs. J. S. Wilson, with Mrs. Harvey Wilson as co-hostess. Mrs. Harvey Wilson, president, called the meeting to order and Mrs. J. W. Clark gave the devotional. The members and Mrs. Mirga Wilson were present.

Moorefield Homemakers met Thursday, October 3, at the home of Mrs. J. S. Wilson, with Mrs. Harvey Wilson as co-hostess. Mrs. Harvey Wilson, president, called the meeting to order and Mrs. J. W. Clark gave the devotional. The members and Mrs. Mirga Wilson were present.

Moorefield Homemakers met Thursday, October 3, at the home of Mrs. J. S. Wilson, with Mrs. Harvey Wilson as co-hostess. Mrs. Harvey Wilson, president, called the meeting to order and Mrs. J. W. Clark gave the devotional. The members and Mrs. Mirga Wilson were present.

Moorefield Homemakers met Thursday, October 3, at the home of Mrs. J. S. Wilson, with Mrs. Harvey Wilson as co-hostess. Mrs. Harvey Wilson, president, called the meeting to order and Mrs. J. W. Clark gave the devotional. The members and Mrs. Mirga Wilson were present.

CONSERVATION ANNUAL REPORT

NICHOLAS COUNTY SOIL CONSERVATION DISTRICT
Carlisle, Kentucky
SUPERVISORS:
Lovell Hollar, Chairman
Norwood Auxier, Vice Chairman
Frank Henry, Secretary-Treasurer
Charles Whaley, Member
Howard Sidle, Member

The regular monthly meeting is held on the first Wednesday night of each month. Special call meetings are held as deemed advisable. Attendance is exemplary. Rarely does a supervisor miss a meeting. Believing that good equipment is needed in the District to do needed conservation work, this SCD has sponsored the purchase of several pieces of big equipment. One new bulldozer is expected to be delivered at an early date to Clifton Waugh, heavy equipment operator. It will be financed through the District with money from the Revolving Fund from the Division of Soil and Water Resources.
The Nicholas County Fiscal Court contributed \$500 to the District for operational expenses. This is the second year contributions have been made by the Fiscal Court to the District. The contribution was made in response to the District's presentation of its proposed annual budget. A part-time secretary is

employed to assist in the administrative work of the district and the Soil Conservation Service.
Other sources of income include voluntary contributions by heavy equipment operators and rentals from water tank farms.
The district sponsored Soil Stewardship Week and furnished bulletin material to the ministers for use in their churches. The district is providing "Honor Awards" for presentation to participating ministers and farmers owning more than 50% of the land, are cooperators with the District.
The 1962 US Savings Bond donated by the state was supervised by more than \$80 donated by the District, plus free airplane rides to the winners. There were 222 essays written.
Supervisors assist in the development of the county Agricultural Conservation Program, and the County ASC Committee cooperate in the development of the District's program and goals.
Conservation
The land in this District is too rolling and steep to permit intensive cultivation. Accordingly, we believe the need is great for more and better pasture and meadow production, there by using the land within its capability. About 1500 acres of hay and pasture were seeded, much of it coming alfalfa and grass mixture. Six hundred acres of waterways were established.

Moorefield Homemakers met Thursday, October 3, at the home of Mrs. J. S. Wilson, with Mrs. Harvey Wilson as co-hostess. Mrs. Harvey Wilson, president, called the meeting to order and Mrs. J. W. Clark gave the devotional. The members and Mrs. Mirga Wilson were present.

Moorefield Homemakers met Thursday, October 3, at the home of Mrs. J. S. Wilson, with Mrs. Harvey Wilson as co-hostess. Mrs. Harvey Wilson, president, called the meeting to order and Mrs. J. W. Clark gave the devotional. The members and Mrs. Mirga Wilson were present.

Moorefield Homemakers met Thursday, October 3, at the home of Mrs. J. S. Wilson, with Mrs. Harvey Wilson as co-hostess. Mrs. Harvey Wilson, president, called the meeting to order and Mrs. J. W. Clark gave the devotional. The members and Mrs. Mirga Wilson were present.

Moorefield Homemakers met Thursday, October 3, at the home of Mrs. J. S. Wilson, with Mrs. Harvey Wilson as co-hostess. Mrs. Harvey Wilson, president, called the meeting to order and Mrs. J. W. Clark gave the devotional. The members and Mrs. Mirga Wilson were present.

Moorefield Homemakers met Thursday, October 3, at the home of Mrs. J. S. Wilson, with Mrs. Harvey Wilson as co-hostess. Mrs. Harvey Wilson, president, called the meeting to order and Mrs. J. W. Clark gave the devotional. The members and Mrs. Mirga Wilson were present.

Moorefield Homemakers met Thursday, October 3, at the home of Mrs. J. S. Wilson, with Mrs. Harvey Wilson as co-hostess. Mrs. Harvey Wilson, president, called the meeting to order and Mrs. J. W. Clark gave the devotional. The members and Mrs. Mirga Wilson were present.

Free Film
Black and White or Color
Sizes 127 620 120
Every Time You Have Your Film Developed Here You Get A Fresh Roll Absolutely Free
We Process All Types of Film
1 Day Service on Black & White
2 Days on Color
The Carlisle Drug Co.

IT'S FLEX-O-GLASS TIME
ONLY 23¢ PER FT.
WINTER-TIGHT, DRAFT-FREE
TIME TO Save Up To 40% on Your Fuel Bills
JUST CUT AND TACK ON OVER WINDOWS AND DOORS
Super Torque Ford's got it!
At Last! A low priced family car with sports car feel. Here's a full performance proved, polished and perfected over a billion owner drive miles.

Falcon's got it!
Wait! If you buy America's only compact with total performance! All new big car styling! Plus a new low level system at V-8. Same old economy and low Falcon price.

Who's got it? YOUR FORD DEALER!
HARPER'S GARAGE 254 EAST MAIN ST. CARLISLE, KY.
ONLY YOUR FORD DEALER HAS USED CARS, TRUCKS

TRY TOTAL PERFORMANCE '64
What is it? Ride, ruggedness, response... fire and fun... sired in competition and honed to perfection by Ford's engineers. In a word, the quality of our '64 cars is so changed that you have to drive one to realize how changed it is!!!

Super Torque Ford's got it!
Hundreds of pounds heavier, it's stronger, smoother, and steers than any other car in its field. Take the wheel and see what a total difference total performance makes!

1
2
3
4
5
6
7
8
9
10
11
12
13
14
15
16
17
18
19
20
21
22
23
24
25
26
27
28
29
30
31
32
33
34
35
36
37
38
39
40
41
42
43
44
45
46
47
48
49
50