



Cawood Calls Football

THE SMALL PACKAGE
A Kentucky "little guy" is the way Kentucky football Coach Charlie Bradshaw describes his tight halfback, Darrell Cox. A native of Miami, Florida, the 165-lb. senior is a small package as far as major college football players go. Darrell stands only five feet, seven and five eighths inches tall and weighs only 160 pounds, while the sophomore-dominated Wildcats were turning in a lack luster performance in losing 23 to 14 to Miami last Saturday. Cox was tremendous—and that's the opinion of Bradshaw. In a 17-play game he gained 130 yards on the ground and caught one pass for eight yards. He gained all but 10 of the yards that the entire Kentucky team collected on the ground.

Before the game Miami Coach Andy Gustafson called Cox, "the best little player in the country." Said Gustafson, "Cox can do so many things well. He is a dangerous open field runner. He is Kentucky's best pass receiver. He can pass, punt, and is, despite his size, a fine defensive back."

Talented Coach Bradshaw says Cox, a tiny man in a big man's game, was a good football player. "Well," he explains, "Darrell has tremendous ability to start with. He has good speed, quickness, and he has the excellent balance all good runners have. And Darrell will outgrow his size. He has tremendous pride in himself, and wants to be a good football player." Bradshaw added with a smile, "I wish we had a few more like him."

My Neighbors



"People watcher!"

LAST DAY - SATURDAY - REXALL

1¢ SALE

Carlisle Drug

THE WISE BIRD STICKS TO REGULAR PAYROLL SAVINGS

Buy U.S. Savings Bonds REGULARLY

AUCTION SALES CATTLE, SHEEP & HOGS TUESDAY & WEDNESDAY, 1 P.M.

PRIVATE SALES DAILY
(In The Center Of The Packing Industry)
Level 10, 11, 12, 13, 14, 15, 16, 17, 18, 19, 20, 21, 22, 23, 24, 25, 26, 27, 28, 29, 30, 31, 32, 33, 34, 35, 36, 37, 38, 39, 40, 41, 42, 43, 44, 45, 46, 47, 48, 49, 50, 51, 52, 53, 54, 55, 56, 57, 58, 59, 60, 61, 62, 63, 64, 65, 66, 67, 68, 69, 70, 71, 72, 73, 74, 75, 76, 77, 78, 79, 80, 81, 82, 83, 84, 85, 86, 87, 88, 89, 90, 91, 92, 93, 94, 95, 96, 97, 98, 99, 100

BLUE GRASS STOCKYARDS CO.
Phone 3-0757, 3-0758 LITTLE ROAD Lexington, Ky.

STORM DOORS and WINDOWS SAVE SAVE

Discount Price Windows as low as \$12.00

PHONE FOR FREE ESTIMATE

Dorsey Bros. & Fisher
Phones 46-J or 46-B

ELLY MAY SAYS: "FOOD IS A BARGAIN!"
Yore shore to find a basket of BIG BARGAINS



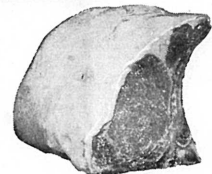
WATCH "THE BEVERLY HILLSBILLIES" EACH WEEK ON CBS-TV

at **IGA** (Come in and shop a spell!)

Crisco 4¢ Off Label 3 lbs. **69¢**

Shedd Salad Dressing 1/2 qt. **39¢**

Tabletite PERFECT FLAVOR Pork Roast 1 lb. **39¢**



Tabletite Diet Aid 8 Oz. **12/\$1**

Potatoes 50 lb. **99¢**

- IGA Cut Corn Poly 24 Oz. 3 for 88¢
- IGA Green Peas Poly 24 Oz. 2 for 69¢
- IGA Krinkle Cut Potatoes 2 Lb. 2 for 75¢
- IGA Mixed Vegetables Poly 32 Oz. 2 for 79¢
- IGA French Fries Poly 2 Lb. 3 for 89¢
- IGA Book Matches 30's 10¢
- IGA Wishbone 8 Oz. 2 for 49¢
- IGA Italian Dressing 8 Oz. 2 for 49¢
- IGA Marlene Margarine 1 lb. 6 for \$1.00
- IGA Lipton Tea Bags 49 65¢
- IGA Lipton's Instant Tea 4 1/2 Oz. \$1.25

Stokely Cling Peaches 2 1/2 Can 3 for 79¢

Swansdown Cake Mixes 19 Oz. Pkg. 3 for 79¢

Tabletite Biscuits Old Style or Buttermilk 8 Oz. Tube 5¢

Folger's Coffee Reg. or Drip 3 lb. Can **\$1.59**

LOIN END 1 lb. **39¢**

Rib End 1 lb. 31¢

Pork Loin Roast 1 lb. 69¢

Pork Chops Center Cut 1 lb. 59¢

Muchmore Sliced Bacon 1 lb. 39¢

Swansdown Angel Food 10 Oz. 39¢

New Green CABBAGE 1 lb. 5¢

Apples 4 lbs. 39¢

Green Peppers 3 for 19¢

Bananas 2 lbs. 25¢

Zesta Crackers 1 lb. 29¢

Coatney's IGA FOODLINER

FARM FACTS
HEALTHIER LIVESTOCK
The first step toward eradicating brucellosis from Kentucky cattle was recently completed when Grant County became the 120th to complete testing and be designated as a modified certified brucella-free county. The entire state is now so classified. Area testing for brucellosis started in Kentucky on January 7, 1957. Since that date over 1,200,000 cattle in 131,600 herds have been tested. A total of 12,000 reactions were found in 3,207 herds. Re-testing is now proceeding on schedule to achieve the complete eradication of this costly livestock disease from the state. Brucellosis is transmittable to humans where it is known as Malta Fever and is recognized as a persistent and difficult malady to control. Thus, its eradication is of direct benefit to every person in the state.

The testing program in Kentucky is a joint undertaking of the Kentucky Department of Agriculture and the U. S. Department of Agriculture. These agencies are now launching on a program designed to eradicate hog cholera, another costly livestock disease, from the Commonwealth.

FOR GREATER SAFETY,
The testing program of fast highway driving is that of slow moving vehicles, such as tractors, combines and other equipment that are often inadequately marked with lights. Many serious and costly accidents involving these slow moving vehicles occur every year. Studies show that 90% of such accidents occur during daylight and 75% involve farm tractors. Two-thirds of the collisions are rear-end and in most cases the driver of the slow-moving vehicle is the person most seriously injured. To reduce the occurrence of such accidents the Ohio Experiment Station has designed a Slow Moving Vehicle (SMV) emblem. It consists of a 14 x 18 inch metal triangle, covered by reflective and fluorescent materials which can be mounted on the vehicle and is easily visible at great distance both day and night.

The Kentucky Farm Equipment Association initiated the sale of new SMV emblems at the recent State Fair, and expects to obtain wide distribution through its dealers. This will be a great contribution to the safety program.

LOTS OF POP. Few people realize that Kentucky ranks third among the states in the production of pop-corns. This year Kentucky popcorn acreage is estimated at 66,000—much less than the 21,000 acres last year, but still exceeded only by Indiana and Iowa. Acreage

And do that cutting job faster and easier—Extra high allowances right now—Easy weekly terms—see money!

AN ALL-NEW McCULLOCH COSTS AS LITTLE AS \$124.95

Buntin's Garage

EVERY YEAR MORE FARMERS GET LAND BANK LOANS

Federal Land Bank Association

MAYSVILLE
209 Sutton St.
Deposit Bank Bldg., on Tuesdays

ROY FRITZ, Manager **CARLISLE**

BE PREPARED FOR WINTER

Storm doors and storm windows are not an expense, they're an investment.

You will save enough on your heat bill to pay for the installation in a few years. And think of the comfort you'll enjoy in the cold winter days.

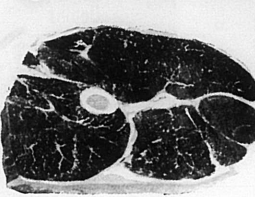
We at Ratliff Bros. are always glad to give free estimates, and help you in any way.

Our prices start at \$12.95 for storm windows completely installed.

Give us a call today for a free estimate.

Ratliff Bros. Co.
Phone 10 Carlisle

Eat Well WITH THESE FOODS



ROUND STEAK
lb. **69¢**

Pork Liver 1 lb. 19¢
Southern Star Sausage 2 Lb. 69¢

Rump Roast 1 lb. 89¢



Eggs 4 doz. \$1.00
ROYAL INSTANT PUDDING 5¢ EACH

Apples 4 Lb. bag 39¢

Frosty Acres Cream Pies 29¢
Joan of Arc Red Kidney Beans 2 for 29¢
Grapfruit 5 for 49¢

Sunshine Hi Ho Crackers 18 Oz. 29¢
Shedd's Old Fashioned Peanut Butter 18 Oz. 59¢
Shedd's Salad Dressing 8 Oz. 39¢
Sweet Pea Cherries 30's Can 2 for 29¢

Maxwell House Coffee 1 lb. tin 49¢
Kentucky Dessert 1/2 gal. 49¢
KALE Cello Bag 19¢

Nabisco Premium Crackers 1 Lb. Box 29¢
Cinderella Self Rising Flour 25 lbs. \$1.59
Dog Food Jo-Bo-Twin-Pot or King Karlo 81 Can 5 for 39¢

Facial Tissue PUFFS 400's 2 for 49¢
Toilet Tissue WHITE CLOUD 4 Rolls 49¢

BANANAS
LB. **9¢**



Save-Mor Coupon Free
WITH PURCHASE OF 3 lbs. HAMBURGER

C & G Shopworth Super Market