

Little Gifts Everyone Loves

BE A SMART SANTA ... SHOP HERE



CARLISLE

Look into all the newly decorated store windows. Shop inside where you'll find that your merchants have stocked the best in gift buys.

STILL A TREMENDOUS SELECTION OF GIFTS TO CHOOSE FROM!

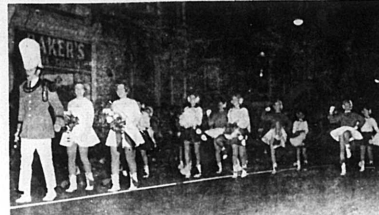
SHOP & SAVE AT HOME!

★ BEAUTIFUL STREET DECORATIONS!
IT'S FUN TO SHOP IN Carlisle

★ CHRISTMAS MUSIC'S EVERYWHERE!

SHOPPING'S SO MUCH MORE CONVENIENT HERE!

Why add to the wear and tear of Christmas shopping by fighting highway traffic? Shop right here.



STEPPING HIGH—And it was cold enough Saturday night for a brisk march as performed by these members of the Paris High School Band at the Jaycee annual Christmas Parade.

WINTER—TIME FOR REFLECTION—Crops are harvested, tobacco sold, water is thawed, livestock fed, daylight hours are short, evenings long; that's winter. And winter is the farmer's time for reflection, study and planning. Crop yields have been near, or above, record fair, relatively lower than manufactured products but, on the whole, good.

The outlook for the new year is not as good as it was twelve months ago. It's too early to predict the course of tobacco which accounts for almost 40% of Kentucky's farm income, but the future of that crop is giving serious concern, especially to those producers whose income is so closely tied to a dangerous one-crop system. Farm income, as a whole, is expected to drop in 1964 but

000 or 45 percent. Nothing in the near future indicates a change in this pattern. In spite of the hardships confronting agriculture considerable financial progress is being made by a small proportion of farmers in every section of the state. Their success can usually be traced to doing common things uncommonly well. They are the farmers who get higher than average crop yields; more pigs per litter, more milk per cow or more beef per acre, than the average.

Those are some of the things on which good farmers will be reflecting during these long winter evenings. Important decisions will have to be made about crop varieties, fertilizers, weed control and the like. Winter farming is not what it used to be. It is now an important part of the planning program—it used to be sitting around the country store bragging about the crops that were never made

expenses increased \$128,300.

Crossword



1. Down
2. Down
3. Down
4. Down
5. Down
6. Down
7. Down
8. Down
9. Down
10. Down
11. Down
12. Down
13. Down
14. Down
15. Down
16. Down
17. Down
18. Down
19. Down
20. Down
21. Down
22. Down
23. Down
24. Down
25. Down
26. Down
27. Down
28. Down
29. Down
30. Down
31. Down
32. Down
33. Down
34. Down
35. Down
36. Down
37. Down
38. Down
39. Down
40. Down
41. Down
42. Down
43. Down
44. Down
45. Down
46. Down
47. Down
48. Down
49. Down
50. Down
51. Down
52. Down
53. Down
54. Down
55. Down
56. Down
57. Down
58. Down
59. Down
60. Down
61. Down
62. Down
63. Down
64. Down
65. Down
66. Down
67. Down
68. Down
69. Down
70. Down
71. Down
72. Down
73. Down
74. Down
75. Down
76. Down
77. Down
78. Down
79. Down
80. Down
81. Down
82. Down
83. Down
84. Down
85. Down
86. Down
87. Down
88. Down
89. Down
90. Down
91. Down
92. Down
93. Down
94. Down
95. Down
96. Down
97. Down
98. Down
99. Down
100. Down

1. Across
2. Across
3. Across
4. Across
5. Across
6. Across
7. Across
8. Across
9. Across
10. Across
11. Across
12. Across
13. Across
14. Across
15. Across
16. Across
17. Across
18. Across
19. Across
20. Across
21. Across
22. Across
23. Across
24. Across
25. Across
26. Across
27. Across
28. Across
29. Across
30. Across
31. Across
32. Across
33. Across
34. Across
35. Across
36. Across
37. Across
38. Across
39. Across
40. Across
41. Across
42. Across
43. Across
44. Across
45. Across
46. Across
47. Across
48. Across
49. Across
50. Across
51. Across
52. Across
53. Across
54. Across
55. Across
56. Across
57. Across
58. Across
59. Across
60. Across
61. Across
62. Across
63. Across
64. Across
65. Across
66. Across
67. Across
68. Across
69. Across
70. Across
71. Across
72. Across
73. Across
74. Across
75. Across
76. Across
77. Across
78. Across
79. Across
80. Across
81. Across
82. Across
83. Across
84. Across
85. Across
86. Across
87. Across
88. Across
89. Across
90. Across
91. Across
92. Across
93. Across
94. Across
95. Across
96. Across
97. Across
98. Across
99. Across
100. Across



MR. SMITH has been making CARPETS for the home-makers of America for 118 years. The carpet he makes will fit your needs now and in the years to come. Above all — he knows that only honest values will keep his cherished traditions alive.

H.Y. SANDERLING — a wonderful, new all-wood surface Wilton carpet at an astonishingly low price.

ALEXANDER SMITH
Carpets and Rugs
Garrett Furniture

PEPSI-COLA COMPANY BRINGS YOU

the sugar-free cola with rewarding true-cola taste!

PATIO DIET COLA



FIGURE EXPERT
DEBBIE DRAKE says:
"GREAT TO YOUR WAIST!"



"THE REFRESHING WAY TO STAY SLIM!"



"SUGAR-FREE—ONLY 1 CALORIE PER SERVING!"



"REWARDING TRUE-COLA TASTE!"



"Now you can satisfy that natural yearning for refreshment and still stay slim. New Patio Diet Cola contains only one calorie per serving. It's absolutely sugar-free, yet it tastes delicious. Gives you true-cola taste, because it's made with true-cola ingredients by Pepsi-Cola Company. Try it today. It's the refreshing way to stay slim. Patio Diet Cola... in economical Half-Quarts."

BOTTLED BY Pepsi-Cola Bottling Co., Ripley, O., UNDER APPOINTMENT FROM PEPSI-COLA COMPANY, N.Y., N.Y.

GIFT IDEAS

FROM HOME HARDWARE

BERNZOMATIC TORCH KITS

THORSEN TOOL SETS

DRILLS SAWS

Hot Plates Electric Irons

Libbey Glassware Cutlery Sets

Electric Corn Poppers Toasters

Bathroom Accessories

Hair Dryers Mixers Percolators

CANNISTER SETS

PRESSURE COOKERS

ONEIDA SOLID STAINLESS

STEEL FLATWARE

CORNING WARE PYREX

Walker Aluminum Ware

Revere Ware

New Mirro-non

sticking-Kitchen Ware

FISHING EQUIPMENT

GUN RACKS

KITCHEN CLOCKS

ALARM CLOCKS STAPLE GUNS

POCKET KNIVES RADIOS

Complete Line of Hardware.

Everything A Useful Gift.

Home Hardware