

A SELECTION OF

BETTER FOODS FOR BETTER MEALS



BETTER MEALS
Mature Beef
ROUND STEAK
LB. 69¢

Southern Star Slim Jim

Boneless
Beef Rump Roast lb. 89¢

Kraft Miracle Whip
Quart Jar

39¢

MORRELL PRIDE Shortening 3 lb. 59¢

Stokely Sliced Pineapple #2 39¢

American Beauty Tomato Juice 46oz. 21¢

Sunshine Krispy Crackers 1 lb. Box 29¢

Krafts Salad or Horse Radish Mustard 2nd 19¢

Frosty Acres Cream Pies

Banana, Chocolate, Lemon, and Coconut

2 for 89¢

Northern Toilet Tissue
(White or Assorted)

4 rolls pkg.

29¢

Shopworth DETERGENT 12 Oz. Plastic 25¢

Purex Bleach OT. 23¢

Trend Dry REG. SIZE 2/39¢

Trend Liquid REG. SIZE 2/59¢

C & G Shopworth Super Market



Wieners

12 Oz. Pkg. 39¢

Fish Sticks 2 lb. 4 Oz. Pkg. \$1.09

CELERY FRESH CRISP stalks 23¢

Golden Pippin APPLES 4 lb. 49¢

Carrots bag 5¢

Rolling Hills Peaches 2 1/2 can 4th 89¢

A Delectable Different Combination!

4 for 29¢

ROYAL GELATIN

Kentucky Dessert 1/2 gal. Ctn. 49¢

Cinderella Flour 2 1/2 Lb. Bag \$1.69

Welch's Apple Grape 3rd 22 Oz. \$1.00

Ham Sandwiches 10¢ each

Complete Line of School Supplies

Selective Service

Questions and Answers
Q—If I borrow on my GI insurance policy, must I repay a specified amount every month?
A—No. While it is desirable to repay the amount borrowed as soon as possible to save interest charges and to return the insurance principal to its full value, there is no required repayment schedule.

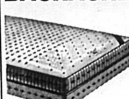
Q—I recently retired with 20 years of enlisted service. Is it true that I have until January 31, 1965, to start my schooling under the Korean GI Bill?
A—January 31, 1965, is not the last day to START

schooling but the day that Korean GI Bill schooling benefits come to an end. Thus, only a year and a half remain to take advantage of this program. However, you should consult your nearest VA office since individual eligibility expires three years after the first discharge or release upon which you would have been eligible for complete separation from active service. Immediate payment without loss of service time does not extend this three-year deadline.

Season For Melons Has (Yum) Arrived

The season for melons has arrived and quality is high and prices most attractive. The above comment is particularly true of watermelon and cantaloupe on local markets. Choosing top watermelon is easy if it's a half or piece you want because you can see the interior quality. Dark, soft, watery areas indicate decay, so avoid pieces which have these defects. When you buy the whole melon, look for one that is symmetrical in shape, firm and have a velvet-like bloom over the surface. The underside will be yellow when the melon is ripe and usually the stem is dry. The trend in commercial watermelon production is toward smaller sizes. The four to five pound baby melons have not yet developed the desired eating quality. However, researchers are continuing to work toward this end. The most popular variety today is the Charleston. It is especially good news to dieters. Watermelon is a fat source of vitamin C and a good source of vitamin A. Store watermelon at temperatures from 35 to 40°F with high humidity. Do not plan to keep a cut melon more than one or two days because it deteriorates quickly. Ripe cantaloupes will feel springy when general slight pressure is applied. The netting should be come and stand out noticeably. The rind should be either light greenish or yellow. The scar at the end should be calloused and slightly sunken. The seeds of the melon should be soft, a ready-to-eat cantaloupe will have a sweet aroma while one that is immature will have little or no odor.

SLEEP AWAY YOUR BACKACHE



ON A NEW **SPRING AIR BACK SUPPORTER MATTRESS**

THE WORLD'S MOST MARVELOUS MATTRESS
Easy terms
Garret's Furniture Co.

FREE FILM

Black and White or Color
SIZES 127 620 120
EVERY TIME YOU HAVE YOUR FILM DEVELOPED HERE YOU GET A FRESH ROLL ABSOLUTELY FREE

We Process All Types of Film
1 Day Service on Black & White—2 Days on Color
The Carlisle Drug Co.

PEOPLE WHO LIKE SAVINGS...

...like...



TableRite Premium
MARGARINE
Golden Quarters 5 Lbs. \$1



TableRite Large
Eggs Grade A Doz. 47¢

TableRite
Round Steak lb. 79¢

Sirloin Steak lb. 89¢
T Bone lb. 99¢
Cube Steaks lb. 99¢
Rib Steak lb. 79¢



Stokely's White Cream Corn 303 Cans 10¢



Stokely Honey Pod Peas 303 Cans 2 29¢

Zesta Crackers TableRite Cheese Spread 2 lb. Box 79¢

Stokely Green or Shellie Beans 2 1/2 Can 29¢

Van Camp Beef Stew 24 Oz. 45¢

Stokely Tomato Catsup 14 Oz. 3/49¢

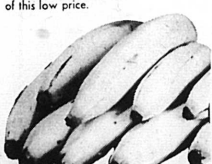
Stokely Tomato Juice 46 Oz. Can 3/89¢

Stokely Peaches 1/2's or sliced 2 1/2 Can 3/89¢

Stokely Ping 46 Oz. Can 3/89¢

Golden Bananas

Slice 'em in salads, or in a gelatin mold... they give the dish that extra lift. Ideal for picnics too, so convenient, so delicious! Now's the time to take advantage of this low price.



Calif. Sweet Meat Cantaloupes 36's 2nd 39¢

Crisp Pascal Celery 30's 2 stalks 29¢

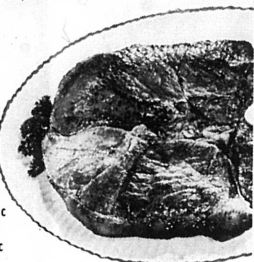
Freeston Peaches 5 lbs. 49¢

lb. 10¢

Watermelons 22 lb. avg. 49¢

Swans Down Cake Mixes Popular Flavors

19 Oz. Pkg. 19¢



Former School
From Page 3
that would improve and advance educational opportunities for the children of the community. She invited V. O. Gilbert, then assistant superintendent of public instruction, to visit Nicholas County. The invitation read, "Come with me and see what we have in our county as an auxiliary organization to help the mothers and fathers to work with teachers to have better schools for the individual community."
"Mr. Gilbert was impressed with the results obtained by the league in each community. Consequently upon being elected state superintendent, Mr. Gilbert created the Department of Community School Improvement Leagues and during the Kentucky Educational Association meeting in April 1917, the federation was organized and became known as the State Community Improvement League. Miss Gardner, a sister of the late Dr. A. T. Gardner, served as superintendent of Nicholas County Schools from January 1910 to December 1916. Assuming a position with the Department of Community School Improvement Leagues at Frankfort, she traveled extensively throughout the state organizing leagues which later became PTA units. During the summer she taught courses at Berea and Eastern Kentucky State Teachers Colleges acquainting future teachers with the program. National recognition and finally Charlotte, North Carolina where she was living when she died.

These exciting **OUTDOOR PLAYS** will highlight your summer vacation in **KENTUCKY**

Stephen Foster Story MUSICAL THROUGH SEPTEMBER 1
Nightly (except Sunday)
Write: Stephen Foster Story, State Park, Nicholas County, Kentucky

BOOK OF JOB BIBLICAL DRAMA THROUGH AUGUST 31
Nightly (except Sunday)
Write: Book of Job, State Park, Nicholas County, Kentucky

Home Is The Hunter THROUGH SEPTEMBER 1
Nightly
Write: Home Is The Hunter, State Park, Nicholas County, Kentucky

Stars In My Crown THROUGH SEPTEMBER 2
Nightly (except Sunday)
Write: Stars in My Crown, State Park, Nicholas County, Kentucky

SUMMER SEASON OF WORLD PREMIERS THROUGH SEPTEMBER 2
Nightly (except Sunday)
Write: Summer Season of World Premieres, State Park, Nicholas County, Kentucky

In addition to these great outdoor shows, see the summer festival of plays with Broadway stars. Louisville's Downtown Brown Theatre. P.S. You'll also enjoy SHAKESPEARE plays in Louisville's Central Park.



BUILDING SUPPLIES
The quicker your new home is built, the less it will cost you, provided, of course, that the work is good. Ratliff's complete facilities assure you speed plus high construction standards—individual workmen can take time to be exact and still finish their jobs ahead of usual schedules.

FOR THE BEST IN BUILDING OR THE BEST IN BUILDING MATERIALS SEE US
Ratliff Bros. Co.
Phone 10 Carlisle

Coatney's IGA FOODLINER