

The White and Carter Company in Princeton put details for trial... Where phosphorus was used on strawberry beds in Marshall county...

Kill 'em ALL with COOK-KILL! ONLY 69¢ PER PINT! NEAL'S SQUARE DEAL GROCERY

Federal Land Bank 4% Loans FIRST CHOICE WITH FARMERS OF THE NATION

FISHING --- A. B. LAKE Located on U. S. Highway 62 at Kentonwood, Kentucky

Welcome Homecomers Visit our Conoco Service Station for your automotive needs during Homecoming.

Conoco Service Station Chester Garage

Welcome Homecomers Let Us Service Your Car During The Homecoming

Standard Service Station Corner Main & Syracuse Carlisle, Ky.

"PIONEER DRUG STORE" J. C. Tureman, Prop.

INSURANCE FIRE & WIND HAIL

CARLISLE MERCURY, CARLISLE, KY., JULY 6, 1950

MARINE AIR RESERVE MOBILIZATION - 1950



U. S. MARINE AIR RESERVE SQUADRONS, based at 22 U. S. Naval Air Stations throughout the nation, are being mobilized to meet the two largest coast-to-coast mass movements...

GREENVIEW, ILLINOIS—This summer the Marine Air Reserve Training Command will launch the largest coast-to-coast mass movements of fighter planes to marine game maneuvers ever planned for American reserve air squadrons in peacetime.

More Jet Fighter Training More Marine Air Reserve fighter pilots will be checked out of Marine Air Reserve squadrons during 1950 summer maneuvers.

INSURANCE FIRE & WIND HAIL J. C. Tureman, Agent, Phone 3178 Carlisle, Ky.

Welcome Homecomers!

Serving Carlisle and Nicholas County for the Past 5 Years -- Specializing in --

Hotpoint Appliances Oil & Gas Heating Electrical Wiring Maurice King Locust Street -- Next to Mercury

MATTHIAS INSURANCE AGENCY Phone 249 Carlisle, Ky.

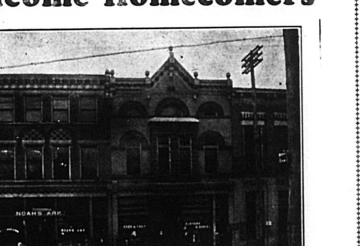
Welcome, Homecomers!

Now going on our 11th year of service Carlisle and Nicholas county people. Thanking you for your patronage in the past and we will endeavor to give you prompt and efficient service in the future.

Western Auto Associate Store

Home Owned and Operated by THOMAS C. JOHNSON Carlisle, Ky.

Welcome Homecomers



Several years ago you back in the 1800's a little store was known as Noah's Ark...

Lerman Bros. came to Carlisle in 1932 and since that time they have endeavored to give Nicholas county the best in merchandise.

Lerman Bros. is always doing their best in promoting progress in Carlisle and the County and are now showing a complete line of up-to-date merchandise at a price for everyone.

Lerman Bros. At Feabick's Furniture & Appliances

Pictorial Review Of 1900



NICHOLAS COUNTY JAIL This picture shows the Nicholas County Jail in 1900. It had been remodelled in 1892.



T. C. COLLIERS "NEW CASH STORE" This cut gives a fair representation of the building occupied by Mr. T. C. Colliers as a general dry goods store in 1900.



THE PRESBYTERIAN CHURCH IN 1900 Dr. H. M. Scudder, Pastor



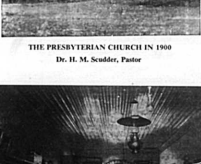
BONES FOUND NEAR BLUE LICK SPRING IN 1894 The above shows bones of the "Mammoth" or mastodon, an animal that lived since extinct.



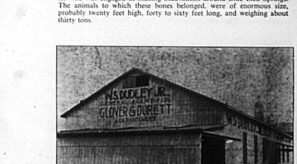
HOWE JEWELRY STORE W. W. Howe, Prop.



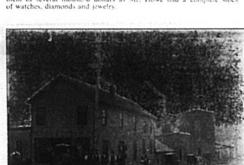
H. N. RANKIN County Auditor Stock Dealer in 1900



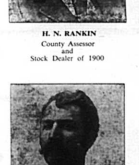
THE CITY DRUG STORE S. F. Baird, Prop.



"HIGH VIEW" STOCK FARM About one half mile west of the Public square was the home and stock sales-barn of Mr. James L. Donnell, County Treasurer in 1900.



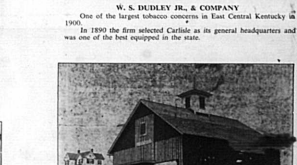
THE CARLISLE CARRIAGE WORKS Jas. Archibald & Son, Prop.



M. V. BOSTAIN Proprietor of Sharpsburg Roller Mills



BLUE GRASS GROCERY COMPANY J. F. Jellison, Manager



CARLISLE GRADED SCHOOL BUILDING The above is a fair representation of the Carlisle Graded School Building erected in 1901 and added to later...

Advertisement for Lerman Bros. featuring a grid of small photographs showing various scenes and buildings from 1900, including the Pioneer Drug Store, the City Drug Store, and the Carlisle Graded School Building.