

PAGE SIX

CARLISLE MERCURY, CARLISLE, KY., DECEMBER 15, 1932

Yuletide Joy to All

Are You Preparing For The Joys of Christmas?

Just 10 Days Till The Christmas Feast

We offer you the finest of Groceries, Canned, Nuts, Fruits—all the good things to be found in a high-class grocery. Call 13—we deliver.

ED METCALFE

Low Round Trip Fares

VIA TRAIN FOR **CHRISTMAS HOLIDAYS**

The Louisville & Nashville Railroad offers very low Round Trip Fares between all points on its system and to many points on other railroads throughout the United States.

Trains go in Pullman cars on payment of Pullman tickets.

Half fare for children of 8 and under 12 years of age.

For particulars as to the various rates, train schedules, etc., consult L. N. Ticket Agent.

Travel by Train—Safe—Comfortable

For Those Everyday Problems of CHILD HEARING

the PARENTS' MAGAZINE

Every Month a Complete MOVIE GUIDE

Special INTRODUCTORY Offer

Send for the complete to the PUBLISHERS OF THE PARENTS' MAGAZINE, 11 East 32nd Street, New York

Ask Your Doctor Two Important Questions

How Many Minerals Does the Body Contain? Why Are Minerals and Vitamins So Essential to Bodily Health?

OUR WONDERFUL BODIES

OUR BODIES ARE HEARING

MAKE THIS TWO PART TEST

SPECIAL \$1.25 Value

Large 12-oz. Bottle

Manufacturers make the SPECIAL INTRODUCTORY OFFER in a Short Time Only.

For Sale By: CARLISLE DRUG COMPANY

New Motor Transportation Laws Put Into Effect

All provisions of the motor transportation laws recently enacted by the General Assembly, which have the approval of the public, are now in effect. The laws, which will be announced by the Commissioner of Motor Vehicle Inspection, are as follows:

It is estimated by Mr. Claydon that the new laws will result in a decrease of 100,000 motor vehicles from the state in 1933. The Commissioner of Motor Vehicle Inspection has announced that the laws will result in a decrease of 100,000 motor vehicles from the state in 1933. The Commissioner of Motor Vehicle Inspection has announced that the laws will result in a decrease of 100,000 motor vehicles from the state in 1933.

American Legion Has Goal Of 100 Members

The membership of the American Legion, Lexington, is rapidly increasing. The post has had as its organization goal the attainment of 100 members. The post has had as its organization goal the attainment of 100 members. The post has had as its organization goal the attainment of 100 members.

Two Women sentenced to prison for playing cards for money

Two women were sentenced to prison for playing cards for money. The women were sentenced to prison for playing cards for money. The women were sentenced to prison for playing cards for money.

BARGAINS!

For the Thrifty Christmas Shopper

Ample assortment of gift items both practical and beautiful await your choosing here. Our stocks were never more complete, our values never greater. Plan to do the major part of your gift buying here and save money.

Gifts for every member of the family

R. T. KIRKLAND & COMPANY

"The Store Of Real Value"

LOOKING FOR OLD SANTA?

You'll Find Him at Our Store

He likes the rush and bustle of a store that's always busy

In every department we are full and running with bargains for the Christmas shopper. If it's groceries, candies, fruits, nuts, toys for the children, useful gifts for Father, Mother or Grandpa—Sisters and Brothers—we have it.

And the price is right. Come now, while there is time to make your choice.

Sexton's Cash Store

"The Store That is Always Busy"

Government Budget For 1934 Cut Half Billion

President Hoover's budget for 1934 is estimated to be \$1,100,000,000. The budget is estimated to be \$1,100,000,000. The budget is estimated to be \$1,100,000,000.

Make Christmas Chery With GAY LIGHTS

Let's put Old Man Trouble in jail for the next three weeks and make this our merriest Christmas—

With lights, laughter and song. With generous remembrance for less fortunate neighbors and for every youngster in town.

With old hats buried, old hurts forgotten and good will to all men in the beautiful spirit of that first Christmas in Bethlehem nearly twenty centuries ago.

With twinkling lights in gay Christmas colors, on our streets, in our stores, on our decorated trees at home to make the home bright and chery—with electric lights that are safe, convenient, economical.

Kentucky Utilities Company

COMMISSIONER'S SALE

W. J. Mathias, Commissioner of Public Lands, has announced a public sale of land in the State of Kentucky. The land is located in the State of Kentucky. The land is located in the State of Kentucky.

Don't Get Up At Night

MATHIAS INSURANCE AGENCY

JOE MATHIAS, AGENT

Phone 246

666 LIQUID TABLETS - SALVE

Check Colds first, Headaches or Nerve Pains, Migraine, etc.

Farmer and Planter Loss Leaf Tobacco Warehouses

MANSVILLE, KY. THE BIG BOLLAR HOUSE.

AVRAGES

1929 \$19.23 \$20.38

1930 \$18.21 \$18.58

1931 \$17.50 \$17.75

1932 \$16.50 \$16.75

THINK THIS OVER

Jim the Conqueror

By Peter B. Kyne

"I don't want a fight," the girl cried passionately. "I'm sick and tired of you!"

"I don't want a fight," the girl cried passionately. "I'm sick and tired of you!"

WALNUT GROVE

W. W. O'Connell and family have moved to Walnut Grove. The family has moved to Walnut Grove. The family has moved to Walnut Grove.

WALNUT GROVE

W. W. O'Connell and family have moved to Walnut Grove. The family has moved to Walnut Grove. The family has moved to Walnut Grove.

WALNUT GROVE

W. W. O'Connell and family have moved to Walnut Grove. The family has moved to Walnut Grove. The family has moved to Walnut Grove.

MERANDA

Mrs. J. H. Smith and family have moved to Meranda. The family has moved to Meranda. The family has moved to Meranda.

MERANDA

Mrs. J. H. Smith and family have moved to Meranda. The family has moved to Meranda. The family has moved to Meranda.

MERANDA

Mrs. J. H. Smith and family have moved to Meranda. The family has moved to Meranda. The family has moved to Meranda.

MERANDA

Mrs. J. H. Smith and family have moved to Meranda. The family has moved to Meranda. The family has moved to Meranda.

MERANDA

Mrs. J. H. Smith and family have moved to Meranda. The family has moved to Meranda. The family has moved to Meranda.

MERANDA

Mrs. J. H. Smith and family have moved to Meranda. The family has moved to Meranda. The family has moved to Meranda.

MERANDA

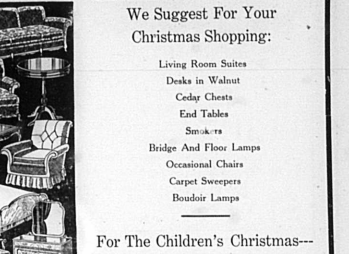
Mrs. J. H. Smith and family have moved to Meranda. The family has moved to Meranda. The family has moved to Meranda.

MERANDA

Mrs. J. H. Smith and family have moved to Meranda. The family has moved to Meranda. The family has moved to Meranda.

Furniture Gifts Are Remembered

They Are Lasting Gifts That Reflect The Giver's Thoughtfulness



We Suggest For Your Christmas Shopping:

Living Room Suites
Desks in Walnut
Cedar Chests
End Tables
Smokers
Bridge and Floor Lamps
Occasional Chairs
Carpet Sweepers
Boudoir Lamps

For The Children's Christmas--

WAGONS VELOCEPES SLEDS CHAIRS LITTLE TABLES AND A COLLECTION OF SMALL TOYS AT YOUR OWN PRICE—SEE BASEMENT

SAM T. HOWE & CO.

(INCORPORATED)

"If It Is Not Right, We Satisfy You"

1,525,000 Pounds averaged \$14.34

the best in town for the Week Ending Dec. 10

If you are going to sell in Lexington sell with us and see the difference.

Following are a Few Crop Averages:

	Lb.	Av.
Fred Axler	1820	\$20.94
Fred Axner	1630	\$23.90
Piper Bros. & Howard	2640	\$17.50
C. S. Whaley	3075	\$20.10
C. M. Black (Missouri)	1485	\$22.90
Howard Sale (Missouri)	1460	\$22.10

8 acres under roof; fine light; individual attention given to every man's crop.

Virginia Avenue Tobacco Warehouse Company

Incorporated

LEXINGTON, KY.

R. L. Stivers W. G. P. Ledford B. W. Stivers

MATHEWS BRANTON

Mrs. L. E. Brantton and family have moved to Mathews Branton. The family has moved to Mathews Brantton. The family has moved to Mathews Brantton.