

FIND SEVERAL IN AFTERTHOUGHT

While General Smith with a number of his staff were on duty at the post, a fire broke out in the kitchen of the mess hall. The fire was quickly extinguished, but it was found that several of the mess hall attendants had been asleep at their posts. The incident has caused a great deal of concern among the officers and men of the post.

TEMPORARY SHEEP PASTURES

A system of temporary pastures for sheep has been established in the district. The system is designed to provide for the needs of the sheep raisers in the district during the summer months. The pastures are located in various parts of the district and are well suited for the needs of the sheep.

PLANT LIFE

John L. Gardner, county clerk, has been appointed to the position of county clerk. He has been in the service of the county for many years and has a wide knowledge of the county's affairs. He is a well-known and respected member of the community.

STAGGERS IN REPLANTING CORN

Where corn is replanted following a loss due to stagers, the corn should be replanted as soon as possible. The stagers are caused by a fungus which attacks the corn plants. The fungus is most common in the lowlands and in the corn fields which are planted in the late spring.

WHEN TO CUT OATS

Oats should be cut when they are in the best stage of maturity. The oats should be cut when the grain is well developed and the straw is beginning to turn yellow. The oats should be cut as soon as possible after they have reached this stage of maturity.

CARLISLE MERCURY, CARLISLE, KY., JUNE 12, 1930

When a horse is to be shod, it is important that the farrier be well informed as to the condition of the horse's feet. The farrier should examine the horse's feet carefully before he begins to shoe them. This will enable him to determine the best type of shoe to use for the horse's feet.

HINTS TO FARMERS

Always remember to pasture the stock in the best pastures available. The pastures should be well maintained and the stock should be rotated from pasture to pasture. This will help to keep the pastures in good condition and will also help to keep the stock in good health.

Wonderful Record For The New Ford Car

The following letter written by the City of Louisville, Director of safety of the Ford Dealers of Louisville was copied from their adv. in the Courier-Journal of June 8th.

June 4th, 1930

To THE AUTHORIZED FORD DEALERS OF LOUISVILLE, KY.:

We are writing you regarding the experience we have had with Model A Ford Roadsters, used in this department by our men in covering their beats.

Our cars Nos. 19, 14, 25, 36 and 42 were in service for two years.

We have taken the cost of operating these cars and it is a pleasure for us to state the total operating cost averaged 1.73 cents per mile.

In arriving at this low figure a very liberal depreciation was charged off: over twenty-one miles per gallon of gasoline was experienced; the average mileage of each of these cars was 17,276 miles.

The above figures are extremely low, and enabled this department to effect a considerable saving in giving adequate police protection to the Citizens of Louisville.

Yours Truly,
Roy W. Easley,
Director of Safety.



SERVING MANY BUSINESSES

Experience of large fleet owners reveals the unusual reliability and economy of the new Ford

AMUCANT TRIBUTE to the value of the new Ford is found in the reports made by Federal, state and city governments and by large industrial companies which keep careful record-keeping books. In most instances, the Ford has been chosen only after exhaustive tests have shown that it compares favorably with every other car that combines good performance—low power, safety, economy, low cost of operation and upkeep, reliability and long life.

Prominent among the companies using the Ford are the Associated Companies of the Bell System, Armour and Company, The Borden Company, Commercial Rubber Company, General Electric Company, Goodyear Tire and Rubber Company, Kelllogg Company, Knickerbocker Ice Company, Morton Salt Company, The Pillsbury Flour Mills Company, The Procter and Gamble Company, and Swift & Company.

Each of these companies uses a large number of Ford cars and trucks. The Associated Companies of the Bell System use more than eight thousand. The Commercial Rubber Company uses more than a half a dozen. Ford Haulage double-deckers, Buell's double-deckers, and the other double-deckers, are used in the production and delivery of the world's goods and extend the useful service of men and companies.

Constant, steady operation over many thousands of miles explains the advantages of the Ford. It is the car of choice of the public at low cost, its high quality of materials, and

annual accuracy in manufacturing. Beneath its graceful lines and beautiful chassis is a high degree of mechanical excellence.

An example of the value built into Ford is the fact that the Ford is built with roller bearings. They are hidden from view and you may never see them. Yet they play an important part in its satisfactory, economical performance. Their function is similar to the jewels of a fine watch.

Throughout the Ford chassis, a ball bearing is used at every place where it is needed to reduce friction and wear and give smooth, reliable mechanical operation.

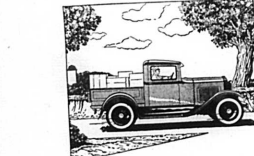
At many points, as on the transmission counter-shaft, chain release, fan and pump shaft, and front drive shaft, these bearings are used where they are considered adequate.

Less costly types of bearings might be used, but the Ford is built with the high quality built into the Ford are the exclusive use of steel forgings, fully tempered, heat-treated, and finished. The Ford is built with the highest quality materials and workmanship.

The Ford policy has always been to use the best possible material for each part and then, through large production, to give the public at low cost.

NEW LOW PRICES

Model A Sedan	\$1000
Model A Coupe	1100
Model A Truck	1200
Model A Van	1300
Model A Delivery	1400
Model A Station Wagon	1500
Model A Roadster	1600
Model A Cabriolet	1700
Model A Touring	1800
Model A Sedan	1900
Model A Coupe	2000
Model A Truck	2100
Model A Van	2200
Model A Delivery	2300
Model A Station Wagon	2400
Model A Roadster	2500
Model A Cabriolet	2600
Model A Touring	2700



FORD MOTOR COMPANY

Beautifully Made House Dresses Non-Shrinkable \$1.00 Each

FOR WOMEN—in Dimities and Prints

FOR CHILDREN—in Broadcloth, Dimities and Prints

Fast colors, well made and stylish—one of the best values we have ever seen

R. T. KIRKLAND & COMPANY

The Store of Real Values

JERSEY CATTLE at AUCTION

For a Foundation of High-Class REGISTERED JERSEY CATTLE attend the FIRST PUBLIC SALE of choice young breeding stock to be sold by IDLE HOUR STOCK FARM, Inc. —noon— Saturday, June 21 Lexington, Kentucky

This small but select offering is rich in the blood of the celebrated Imp. Combination's Premier 150715 Xenia's Bowlin's Sultan 252581 regularly for the past 8 years without a reactor.

For catalog address: Mr. Olin Grier, care above, or Jersey Sale Headquarters, Joe Morris, Sales Mgr., Westerville, Ohio.

A. T. GARDNER Optometrist Eye Examined—Glass Fitted Farmers Bank Building CARLISLE, KENTUCKY

When Chicks Are 6 Weeks Old

When chicks are 6 weeks old they need the best feed possible. To fill them out plump with meat and brilliant, glossy plumage. To develop lively, lively birds in the shortest time possible.

Simco Buttermilk Growing Mash

Should be fed when chicks have reached the age of 6 weeks. Make the change gradually. It is higher in Protein and rich in Vitamins. Buttermilk, Oatmeal, Cod Liver Oil and proper minerals. Contains full range of vitamins. Contains full range of minerals. Contains full range of vitamins. Contains full range of minerals.

For the Allmash System

If you prefer the Allmash System, feed SIMCO 2 in 1 Allmash Starter and Grower right up to 12 weeks old. It will be ready for Simon Allmash Layer Raiser.

Feed at Reasonable Prices Blue Grass Produce & Transfer Co. CARLISLE, KY.

KROGER STORES

- High Quality Lowest Prices
- Raisin Bread 1 Pound Loaf... 15c
 - LARD, 4 Pound Pail... 65c
 - CORN MEAL, 3 Pounds... 10c
 - STANDARD CORN, MOMMAY'S, 3 Cans... 25c
 - SCRATCH FEED, 10 Pounds... 20c
 - Sugar, 25 Pound Package... \$1.33
 - BULK RICE, 3 Pounds... 37c
 - TEA, Country Club, 1 1/2 lb. Pkg... 20c
 - CORN FLAKES, Country Club... 10c
 - COFFEE, Jewel, Pound... 25c
 - Cake, 4x6x4... 25c
 - FRANCO-AMERICAN SPAGHETTI, 3 Cans... 25c
 - MILK, Country Club, 3 Cans... 25c
 - PASTRY FLOUR, Country Club... 25c
 - POPKIN AND BEANS, Campbell's, 3 Cans... 25c
 - SODA CRACKERS, 1 Pound Package... 15c
 - Babbitt's Cleanser, 2 Cans... 7c
 - LEMON EXTRACT, 16c
 - VANILLA EXTRACT, 14c
 - CHERRUBLO Oblemagine, Pound... 25c
 - CATSUP, Country Club... 15c
 - PRESERVES, Country Club... 25c
 - JELLY, Country Club... 25c
 - Gold Medal, 12 1/2 lb. Cans... 24 1/2 lbs. \$1.03
 - Pilbury, 12 1/2 lb. Cans... 24 1/2 lbs. \$1.03
 - Country Club, 12 1/2 lb. Cans... 24 1/2 lbs. .79

Meat Values

SMOKED CALLES... Lb. 22c

COUNTRY BACON... Lb. 20c

DRY SALT BUTTS... Lb. 15c

Go Where The Crows Go—To SUMMER GORDON'S CARLISLE, KY.

SALE UNLOADING

Men's Best Work Sox 9c

Men's Union Suits 39c

Men's Window Shades GREEN AND TAN Regular 75c Value 47c

Children's Broadcloth Bloomers 19c

Children's Shirts and Drawers 39c

Men's FINESTRECH Pants Regular \$15 Value 89c

Hundreds of Economy Wise Folks have shown good judgment by taking advantage of the astounding Low Prices That Now Prevail Sensational Reductions On Entire Stock

Sale Is On And Going Strong

Men's Shoes Peters' Diamond Brand—Best Shoes Made Save Now

\$3.50 to \$4.00 values, now... \$2.79

\$4.50 to \$5.00 values, now... \$3.98

\$4.50 to \$6.00 values, now... \$3.98

\$6.50 to \$8.00 values, now... \$5.95

Ladies Shoes Thousands of Pairs! Peter's Ladies Fine Footwear. Look what you can save now

\$3.00 to \$4.00 values, now... \$2.79

\$4.00 to \$5.00 values, now... \$3.48

\$5.00 to \$6.00 values, now... \$3.98

Every known style—all heels—Straps, Pumps, Ties and Oxfords

LOOK! 2 Ladies House Dresses for only 98c

2-1/2 yards 9-4 First Quality Sheeting for 79c

10 Yards Bleached Muslin 11c

36 inch Brown Cotton for 89c

Wash Frocks and Smocks BEAUTIFUL PATTERNS All Washed \$3.98 Very Special 89c

New Dresses in SIX BRASSES VOLLIER, DIMITIES, FLOWERS CREPES Special Price \$3.98 a pair

LOOK! One Lot of Ladies Regular \$1 Silk Hose to close out at 59c

Men's Suits ONE LOT \$11.50 to \$13.00 SUITS \$8.95

ONE LOT \$12.00 to \$22.00 SUITS \$13.95

Men's Straw Hats \$2.00 to \$2.50 \$1.39

Men's Boy's Suits ONE LOT \$1.50 to \$1.75 SUITS \$1.39

ONE LOT \$1.50 to \$1.75 SUITS \$1.39

Wonderful Record For The New Ford Car

The following letter written by the City of Louisville, Director of safety of the Ford Dealers of Louisville was copied from their adv. in the Courier-Journal of June 8th.

June 4th, 1930

To THE AUTHORIZED FORD DEALERS OF LOUISVILLE, KY.:

We are writing you regarding the experience we have had with Model A Ford Roadsters, used in this department by our men in covering their beats.

Our cars Nos. 19, 14, 25, 36 and 42 were in service for two years.

We have taken the cost of operating these cars and it is a pleasure for us to state the total operating cost averaged 1.73 cents per mile.

In arriving at this low figure a very liberal depreciation was charged off: over twenty-one miles per gallon of gasoline was experienced; the average mileage of each of these cars was 17,276 miles.

The above figures are extremely low, and enabled this department to effect a considerable saving in giving adequate police protection to the Citizens of Louisville.

Yours Truly,
Roy W. Easley,
Director of Safety.

What more could you ask than the fact given in this testimonial as to economy and satisfactory service of the Model A Ford. Its percentage of sales still climbing, and caused by the judgment and confidence of people. Buy the Ford Car with all confidence of best value.

See The New Model Ford Truck

131 and 157 inch wheel base. Room for 12 foot body.

131 inch wheel base closed cab dual wheels \$675.00

157 inch wheel base closed cab dual wheels \$701.00

Making the greatest truck value of any day.

Come in and let us demonstrate and show you in detail. Used cars for sale in both Model A and Model T.

Another big reduction in price of Good Year Tires, making up of values in tires. SEE THEM.

Harper's Garage

Give Her a CORONA!

If she has any writing to do—either social or business—she will be delighted with a Corona—especially one in blue, green, lavender or scarlet Duco.

Compare all the portable typewriters and you will find that Corona is the one to choose.

If you have a girl in school or college nothing would be more suitable for her than a Corona. Everything on Corona is made to last. It is the only one that will be able to open any office typewriter.

See the New Model Coronas on Display at the Mercury Office.



Give Her a CORONA!

If she has any writing to do—either social or business—she will be delighted with a Corona—especially one in blue, green, lavender or scarlet Duco.

Compare all the portable typewriters and you will find that Corona is the one to choose.

If you have a girl in school or college nothing would be more suitable for her than a Corona. Everything on Corona is made to last. It is the only one that will be able to open any office typewriter.

See the New Model Coronas on Display at the Mercury Office.

Give Her a CORONA!

If she has any writing to do—either social or business—she will be delighted with a Corona—especially one in blue, green, lavender or scarlet Duco.

Compare all the portable typewriters and you will find that Corona is the one to choose.

If you have a girl in school or college nothing would be more suitable for her than a Corona. Everything on Corona is made to last. It is the only one that will be able to open any office typewriter.

See the New Model Coronas on Display at the Mercury Office.