

SAVE WHILE SAVING MEANS MOST



There never was a time when it was so important to have every drop of butter fat as now...

Don't Risk Using an Unreliable Cream Separator

Come in and Buy a Primrose

It is the highest priced cream separator made, either in the United States or abroad...

THE HOWARD HARDWARE CO. INC.



The Can That Transforms

If your floors are looking worn or dingy, try refinishing them with HANNA'S LUSTRO-FINISH

Present-You'll be surprised at the results. Bright lustrous and beautiful floors appear, best self. Just get a can and put it on as you would varnish.

Comes in all natural wood colors.



DOJSEY BROS. & FISHER

MADE TO WALK ON

DOJSEY BROS. & FISHER

Advertisement for 'A Field of Satisfaction' and 'Gold Medal Field Seeds'.

Advertisement for 'New Toll Rate Effective Jan. 21, 1919'.

Advertisement for 'Nicholas Home Telephone Company'.

Advertisement for 'J. C. HEAD, Mgr.'.

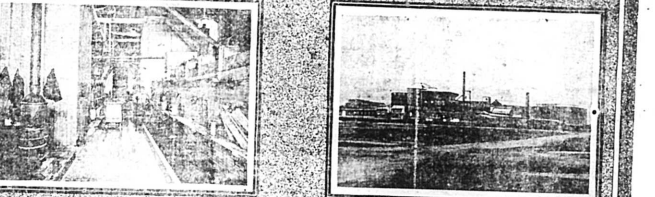
If You were Guaranteed A 2 to 3% Monthly Dividend You'd Buy - Wouldn't You?

Back of the Louisville Mansfield Lead and Zinc Company is the history of the Kentucky Mansfield Lead and Zinc Syndicate...

Tremendous Profits In Lead and Zinc. There is a vast empire of lead and zinc wealth in the Ozark Mountains...

Four Tracts of Forty Acres Each. One of these 40-acre tracts is immediately to be opened to the public...

Shares Now Selling At One Dollar. Capital Stock \$500,000.00 - Over \$300,000 Already Sold



Louisville Mansfield Lead and Zinc Co. INCORPORATED. 409 Starks Bldg. Louisville - Kentucky City and Main 2154

THE CARLISLE MERCURY. CARLISLE, NICHOLAS COUNTY, KENTUCKY, THURSDAY, APRIL 3, 1919.

Published for the Proprietor by W. H. HARRISON, at the office of the Mercury, Carlisle, Nicholas County, Kentucky.

Subscription prices: In Advance, \$1.00; In Advance, \$1.00; In Advance, \$1.00.

Advertisements: First insertion, 10 cents per line; Second insertion, 8 cents per line; Third and subsequent insertions, 6 cents per line.

Copyright 1919 by W. H. Harrison. All rights reserved.

Printed and Published by W. H. Harrison, at the office of the Mercury, Carlisle, Nicholas County, Kentucky.

Postmaster: Please send address changes to THE CARLISLE MERCURY, Carlisle, Nicholas County, Kentucky.

Third-class postage paid at Carlisle, Kentucky, under Post Office No. 100.

Acceptance for mailing at special rate of postage provided for in Section 1103, Act of October 3, 1917, authorized on March 27, 1919.

Postage paid by addressee.

Subscription prices: In Advance, \$1.00; In Advance, \$1.00; In Advance, \$1.00.

Advertisements: First insertion, 10 cents per line; Second insertion, 8 cents per line; Third and subsequent insertions, 6 cents per line.

Copyright 1919 by W. H. Harrison. All rights reserved.

Printed and Published by W. H. Harrison, at the office of the Mercury, Carlisle, Nicholas County, Kentucky.

Postmaster: Please send address changes to THE CARLISLE MERCURY, Carlisle, Nicholas County, Kentucky.

Third-class postage paid at Carlisle, Kentucky, under Post Office No. 100.

Acceptance for mailing at special rate of postage provided for in Section 1103, Act of October 3, 1917, authorized on March 27, 1919.

Postage paid by addressee.

Subscription prices: In Advance, \$1.00; In Advance, \$1.00; In Advance, \$1.00.

Advertisements: First insertion, 10 cents per line; Second insertion, 8 cents per line; Third and subsequent insertions, 6 cents per line.

Copyright 1919 by W. H. Harrison. All rights reserved.

Printed and Published by W. H. Harrison, at the office of the Mercury, Carlisle, Nicholas County, Kentucky.

Postmaster: Please send address changes to THE CARLISLE MERCURY, Carlisle, Nicholas County, Kentucky.

Third-class postage paid at Carlisle, Kentucky, under Post Office No. 100.

Acceptance for mailing at special rate of postage provided for in Section 1103, Act of October 3, 1917, authorized on March 27, 1919.

Postage paid by addressee.

Subscription prices: In Advance, \$1.00; In Advance, \$1.00; In Advance, \$1.00.

Advertisements: First insertion, 10 cents per line; Second insertion, 8 cents per line; Third and subsequent insertions, 6 cents per line.

Copyright 1919 by W. H. Harrison. All rights reserved.

Printed and Published by W. H. Harrison, at the office of the Mercury, Carlisle, Nicholas County, Kentucky.

Postmaster: Please send address changes to THE CARLISLE MERCURY, Carlisle, Nicholas County, Kentucky.

Third-class postage paid at Carlisle, Kentucky, under Post Office No. 100.

Acceptance for mailing at special rate of postage provided for in Section 1103, Act of October 3, 1917, authorized on March 27, 1919.

Postage paid by addressee.

Subscription prices: In Advance, \$1.00; In Advance, \$1.00; In Advance, \$1.00.

Advertisements: First insertion, 10 cents per line; Second insertion, 8 cents per line; Third and subsequent insertions, 6 cents per line.

Copyright 1919 by W. H. Harrison. All rights reserved.

Printed and Published by W. H. Harrison, at the office of the Mercury, Carlisle, Nicholas County, Kentucky.

Postmaster: Please send address changes to THE CARLISLE MERCURY, Carlisle, Nicholas County, Kentucky.

Third-class postage paid at Carlisle, Kentucky, under Post Office No. 100.

Acceptance for mailing at special rate of postage provided for in Section 1103, Act of October 3, 1917, authorized on March 27, 1919.

NOTICE: Attention! DR. W. RILEY FRANKLIN, 404 First National Bank Bldg., Paris, Ky.

SAVE the Leather 2 IN 1 Shoe Polishes. Keep Your Shoes Neat. LITTLE'S SHOE POLISH FOR BLACK LEATHER AND PATENT SHOES.

THE CARLISLE MERCURY. CARLISLE, NICHOLAS COUNTY, KENTUCKY, THURSDAY, APRIL 3, 1919.

Subscription prices: In Advance, \$1.00; In Advance, \$1.00; In Advance, \$1.00.

Advertisements: First insertion, 10 cents per line; Second insertion, 8 cents per line; Third and subsequent insertions, 6 cents per line.

Copyright 1919 by W. H. Harrison. All rights reserved.

Printed and Published by W. H. Harrison, at the office of the Mercury, Carlisle, Nicholas County, Kentucky.

Postmaster: Please send address changes to THE CARLISLE MERCURY, Carlisle, Nicholas County, Kentucky.

Third-class postage paid at Carlisle, Kentucky, under Post Office No. 100.

Acceptance for mailing at special rate of postage provided for in Section 1103, Act of October 3, 1917, authorized on March 27, 1919.

Subscription prices: In Advance, \$1.00; In Advance, \$1.00; In Advance, \$1.00.

Advertisements: First insertion, 10 cents per line; Second insertion, 8 cents per line; Third and subsequent insertions, 6 cents per line.

Copyright 1919 by W. H. Harrison. All rights reserved.

Printed and Published by W. H. Harrison, at the office of the Mercury, Carlisle, Nicholas County, Kentucky.

Postmaster: Please send address changes to THE CARLISLE MERCURY, Carlisle, Nicholas County, Kentucky.

Third-class postage paid at Carlisle, Kentucky, under Post Office No. 100.

Acceptance for mailing at special rate of postage provided for in Section 1103, Act of October 3, 1917, authorized on March 27, 1919.

Postage paid by addressee.

Subscription prices: In Advance, \$1.00; In Advance, \$1.00; In Advance, \$1.00.

Advertisements: First insertion, 10 cents per line; Second insertion, 8 cents per line; Third and subsequent insertions, 6 cents per line.

Copyright 1919 by W. H. Harrison. All rights reserved.

Printed and Published by W. H. Harrison, at the office of the Mercury, Carlisle, Nicholas County, Kentucky.

Postmaster: Please send address changes to THE CARLISLE MERCURY, Carlisle, Nicholas County, Kentucky.

Third-class postage paid at Carlisle, Kentucky, under Post Office No. 100.

Acceptance for mailing at special rate of postage provided for in Section 1103, Act of October 3, 1917, authorized on March 27, 1919.

Postage paid by addressee.